

ILLUSTRATED PARTS BREAKDOWN

660QR PEDESTAL SYSTEM

ILLUSTRATED PARTS BREAKDOWN (IPB)

The IPB is used to identify a part and its location in a hardware product. The document references specific item numbers in the associated parts list.

HOW TO USE THE IPB

1. Locate the figure containing the item of interest.
2. Locate the number (callout) of the item of interest.
3. Locate that item number in the associated parts list.

FORMAT

Each IPB is generally organized based on its first figure. All other assemblies and subassemblies are referenced from this figure. Each figure contains numeric callouts of all major parts (items).

PARTS LIST

Each parts list contains the following:

Figure and Item No. – Lists the figure number and its referenced numeric callout

Description – Presents the name and a brief description of the item. A single asterisk (*) preceding the description

denotes item is a subassembly to its referenced figure. A double asterisk (**) preceding the description indicates that this item is subordinate to the preceding single asterisk item.

DEC Part No. – Lists the Digital/Vendor part number. The letter in the column heading indicates the current revision level of the Engineering Drawing for the referenced figure.

ECO Cut-In – Lists the top assembly drawing number and revision level at first printing. All additional revisions to an item are listed in this column.

Used On Code – Lists letters referring to the product variation assigned in Figure 1. When this column is blank, the item is used in all variations.

Ref Fig No. – Lists a cross reference between figures within the IPB.

PART NUMBER/PART DESCRIPTION INDEX SECTION

Lists items by part number numerically, and description alphabetically. Items are also referenced to a location within the IPB by figure and item number.

ECO/REVISION HISTORY					OTHER IPB MANUALS REFERENCED
FIGURE NO.	ASSEMBLY	INITIAL LEVEL	CURRENT LEVEL	PRINTING DATE	
1	660QR	00001	00004	12-MAR-92	EK-BA215-IP
2	70-25775	00006	00008		
3	70-25453	00000	00000		
4	70-25434	00000	00000		
5	70-25432	00001	00001		
6	70-25433	00001	00001		

Digital Equipment Corporation reserves the right, without notice, to make substitutions and modifications in the specifications of products documented in this manual and further reserves the right to withdraw any of these products from the market without notice.

Digital Equipment Corporation is not responsible for errors which may appear in the technical description (including illustrations and photographs) of the products covered by this manual.

None of the descriptions contained in this manual imply the granting of any license whatsoever to make, use or sell equipment constructed in accordance therewith.

Restricted Rights: Use, duplication or disclosure by the U.S. Government is subject to restrictions as set forth in subparagraph (c) (1) (ii) of the Rights in Technical Data and Computer Software clause at DFARS 252.227-2713.

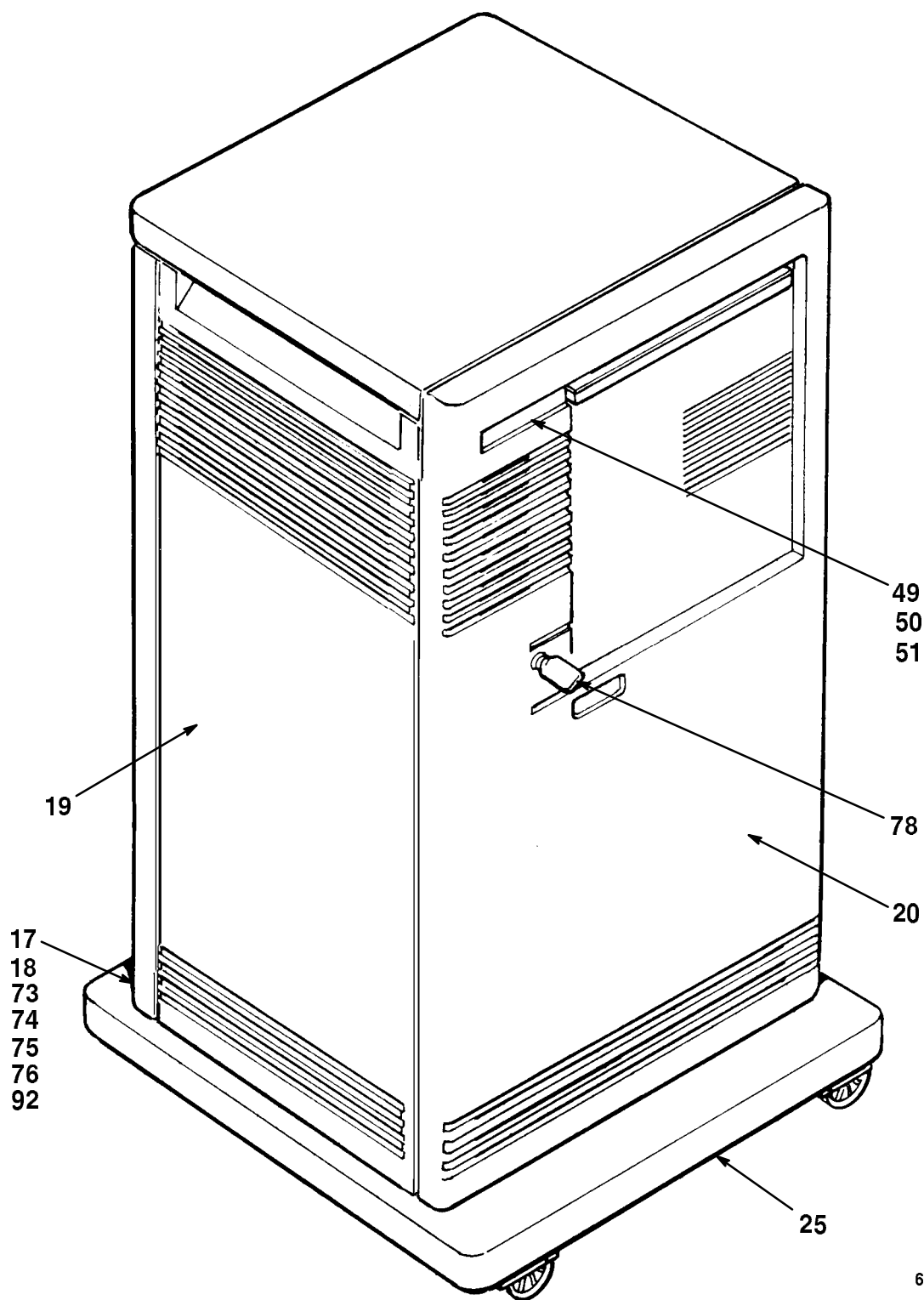
Copyright © 1991, 1992 by Digital Equipment Corporation. All rights reserved.
Printed in U.S.A.

The postage-paid READER'S COMMENTS form on the last page of this document requests your critical evaluation to assist us in preparing future documentation.

The following are trademarks of Digital Equipment Corporation :

DECdirect, RF30, rtVAX, TK50, TK70, VAX, VAXserver and the "DIGITAL logo".

Velcro is a registered trademark of Velcro USA, Inc.



660QR-01-SC

Figure 1. 660QR Pedestal System (Sheet 1 of 3)

INDICATES FRU LEVEL PARTS.

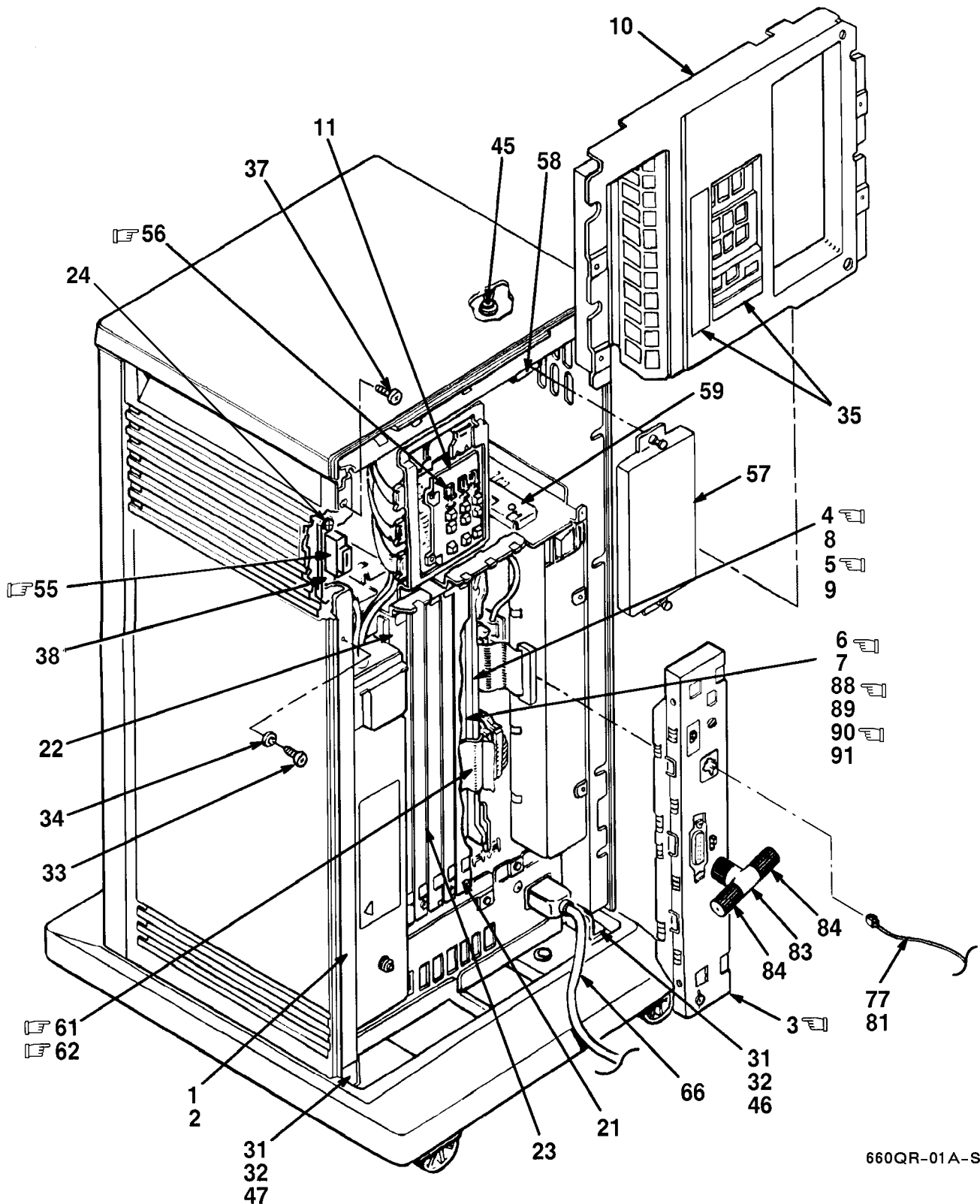
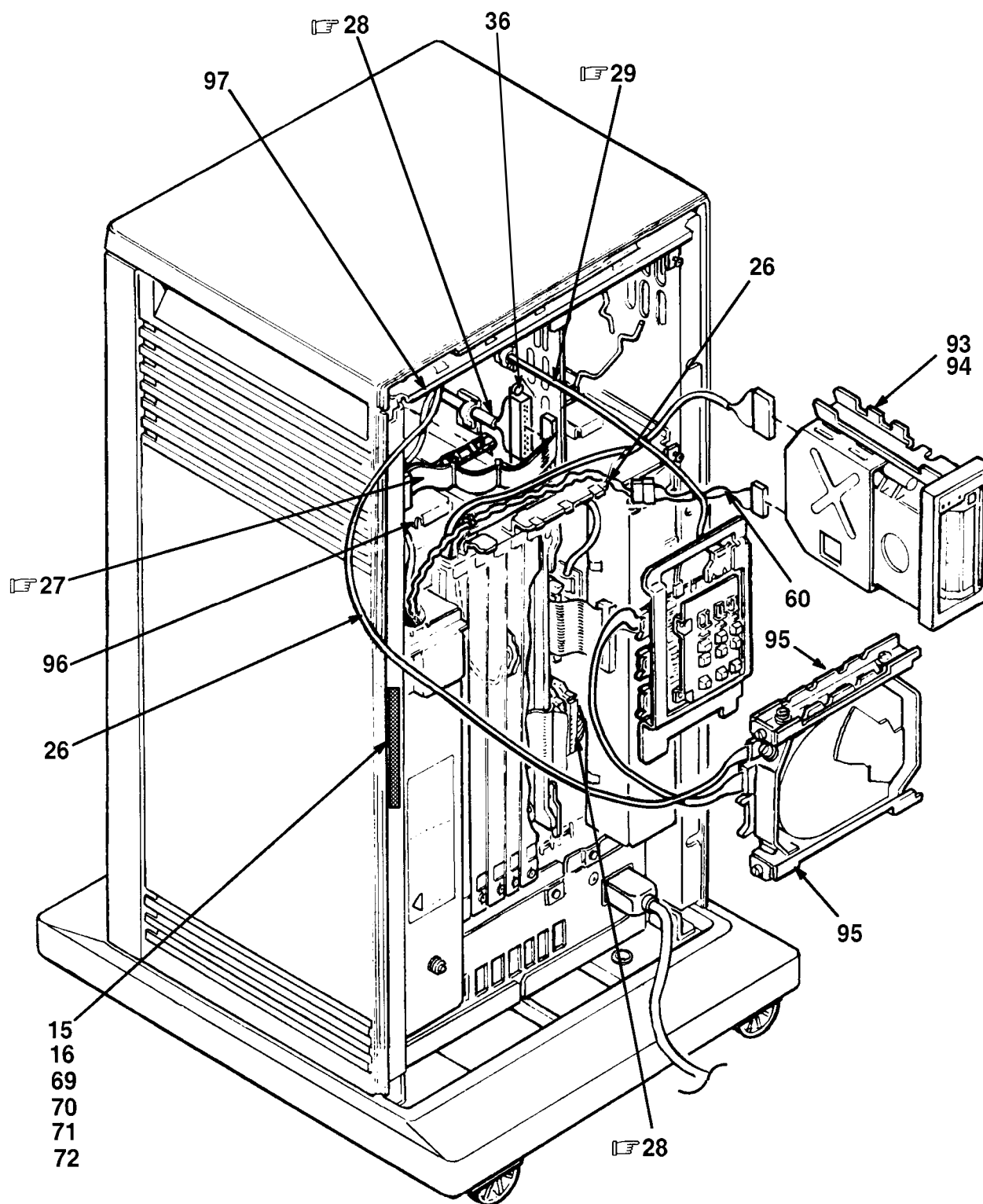


Figure 1. 660QR Pedestal System (Sheet 2 of 3)

660QR-01A-SC



660QR-01B-SC

Figure 1. 660QR Pedestal System (Sheet 3 of 3)

FIG.& ITEM NO.	DESCRIPTION	DEC PART NO.	ECO CUT-IN 660QR 00001	USED ON CODE	REF FIG NO.
1-	660QR PEDESTAL SYSTEM				
	Code A - Used on 660QR-A2 120V Timeshare (w/o Skins)	660QR-A2		A	
	Code B - Used on 660QR-A3 240V Timeshare (w/o Skins)	660QR-A3		B	
	Code C - Used on 660QR-B2 120V Timeshare (w/Skins)	660QR-B2		C	
	Code D - Used on 660QR-B3 240V Timeshare (w/Skins)	660QR-B3		D	
	Code E - Used on 660QR-C2 120V Server (w/o Skins)	660QR-C2		E	
	Code F - Used on 660QR-C3 240V Server (w/o Skins)	660QR-C3		F	
	Code G - Used on 660QR-D2 120V Server (w/Skins)	660QR-D2		G	
	Code H - Used on 660QR-D3 240V Server (w/Skins)	660QR-D3		H	
	Code J - Used on 660QR-E2 120V Timeshare (w/o Skins) (added)	660QR-E2	00003	J	
	Code K - Used on 660QR-E3 240V Timeshare (w/o Skins) (added)	660QR-E3	00003	K	
	Code L - Used on 660QR-F2 120V Timeshare (w/Skins) (added)	660QR-F2	00003	L	
	Code M - Used on 660QR-F3 240V Timeshare (w/Skins) (added)	660QR-F3	00003	M	
	Code N - Used on 660QR-H2 120V Server (w/o Skins) (added)	660QR-H2	00003	N	
	Code P - Used on 660QR-H3 240V Server (w/o Skins) (added)	660QR-H3	00003	P	
	Code R - Used on 660QR-J2 120V Server (w/Skins) (added)	660QR-J2	00003	R	
	Code S - Used on 660QR-J3 240V Server (w/Skins) (added)	660QR-J3	00003	S	
	Code T - Used on 660QR-K2 120V Timeshare (w/o Skins) (added)	660QR-K2	00004	T	
	Code U - Used on 660QR-K3 240V Timeshare (w/o Skins) (added)	660QR-K3	00004	U	
	Code V - Used on 660QR-L2 120V Timeshare (w/Skins) (added)	660QR-L2	00004	V	
	Code W - Used on 660QR-L3 240V Timeshare (w/Skins) (added)	660QR-L3	00004	W	
1	*CHASSIS ASSEMBLY (See IPB Manual EK-BA215-IP)	70-25451-01		ACEGJ LNRTV	
2	*CHASSIS ASSEMBLY (See IPB Manual EK-BA215-IP)	70-25451-02		BDFHK MPSUW	

FIG.& ITEM NO.	DESCRIPTION	DEC PART NO.	ECO CUT-IN 660QR 00001	USED ON CODE	REF FIG NO.
1-					
☞ 3	*BULKHEAD ASSEMBLY, H3602 MODULE	70-25775-01			2
☞ 4	*Module, MicroVAX CPU	M7626-AA		A-D J-M T-W	
☞ 5	*Module, MicroVAX CPU	M7626-BA		E-H N-S	
☞ 6	*Module, 8 MB RAM (M7622-BA)	MS650-BB		A-H	
7	*Label, "Module Number MS650-BB"	36-26883-B8		A-H	
8	*Label, "Module Number M7626-AA"	36-26883-A6		A-D J-M T-W	
9	*Label, "Module Number M7626-BA"	36-26883-A7		E-H N-S	
10	*Panel Assembly, Mass Storage	70-25795-01			
11	*PANEL ASSEMBLY, CONTROL	70-25453-01			3
12	*Label, "Shipping Bracket" (Not Shown)	36-29343-01			
13	*Package Assembly (Not Shown)	37-01072-01		CDGHL MRSVW	
14	*Package Assembly (Not Shown)	37-01072-02		ABEFJ KNPTU	
15	*Label, "Serial/Model DS500 100V, USA"	36-27329-07		ACEGJ LNRTV	
16	*Label, "Serial/Model DS500 200V, USA"	36-27329-09		BDFHK MPSUW	
17	*Label, "BA215 Base 100/120V, USA"	36-29305-01		CGLRV	
18	*Label, "BA215 Base 220/240V, USA"	36-29305-02		DHMSW	
19	*ENCLOSURE ASSEMBLY, SHELL	70-25432-01		CDGHL MRSVW	5
20	*PANEL ASSEMBLY, FRONT	70-25433-01		CDGHL MRSVW	6
21	*Bulkhead Assembly, Front	70-23981-01			
22	*Bulkhead Assembly, Front (w/TQK50 Cable Egress)	70-23981-04			
23	*Panel Assembly, Gap Filler	70-24071-01			
24	*Screw, Mach Flat Hd 02.5M x .08	90-10917-01			
25	*BASE ASSEMBLY	70-25434-01		CDGHL MRSVW	4
26	*Harness Assembly, DC Storage (From Power Supply to RF and TK)	17-01965-01			
☞ 27	*Cable Assembly, Internal DSSI Daisy-Chain, 50 Cond Flat	17-01962-01			
☞ 28	*Cable Assembly, KA640 DSSI, 50 Cond Round	17-01963-01			
☞ 29	*Cable Assembly, 10 Cond Round (From Backplane to OCP)	17-01964-01			
30	*Label, "BA2XX Rev" (Rolled) (Not Shown)	36-29163-07			

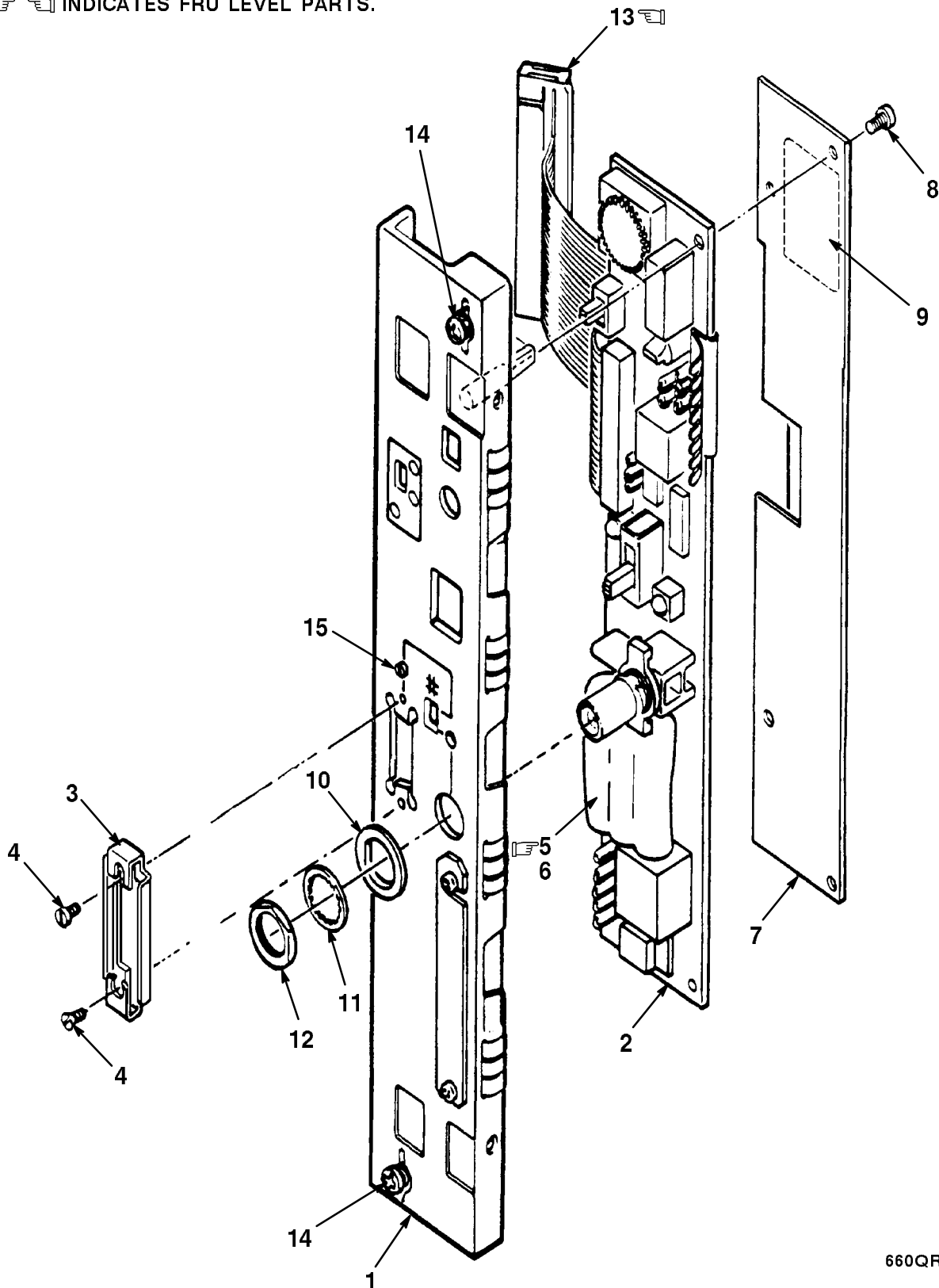
FIG.& ITEM NO.	DESCRIPTION	DEC PART NO.	ECO CUT-IN 660QR 00001	USED ON CODE	REF FIG NO.
1-					
31	*Screw, Captive Hex Hd No. 1/4-20	90-06370-08		CDGHL MRSVW	
32	*Washer, Internal Lock	90-06637-00		CDGHL MRSVW	
33	*Screw, Self-Tap Phl Pan Hd No. 8-16 x 1/2	90-09800-08		CDGHL MRSVW	
34	*Washer, Flat	90-06661-00		CDGHL MRSVW	
35	*Label, "Control Panel"	36-29341-01			
36	*Screw, Sems Phl Pan Hd No. 4-40 x 1/2	90-09643-03			
37	*Screw, Sems Phl Truss Hd No. 6-32 x 1/4	90-00049-30			
38	*Plate Assembly, Connector	70-26208-01			
39	*KIT, ACCESSORY (deleted)	70-25760-01			
40	*KIT, ACCESSORY (deleted)	70-25760-02			
41	*KIT, ACCESSORY (deleted)	70-25760-03			
42	*KIT, ACCESSORY (deleted)	70-25760-04			
43	*Label, "Warning Equipment Rating 100/120V" (Not Shown)	36-17905-16		ACEGJ LNRTV	
44	*Label, "Warning Equipment Rating 220/240V" (Not Shown)	36-17905-17		BDFHK MPSUW	
45	*Plug, Button	90-07064-00		ABEFJ KNPTU	
46	*Bracket, Base Mounting, Right	74-36712-01		CDGHL MRSVW	
47	*Bracket, Base Mounting, Left	74-36712-02		CDGHL MRSVW	
48	*Label, "Bar Code" (Not Shown)	36-18460-06			
49	*Medallion, VAX 4000 Model 200	74-36884-09		CDLMVW	
50	*Medallion, rtVAX 4000 Model 200	74-36884-10		GHRs	
51	*Medallion, VAXserver 4000 Model 200	74-36884-13		GHRs	
52	*Label, "Logo/Model, VAX 4000 Model 200" (Not Shown)	36-29304-08		ABJKTU	
53	*Label, "Logo/Model, rtVAX 4000 Model 200" (Not Shown)	36-29304-09		EFNP	
54	*Label, "Logo/Model, VAXserver 4000 Model 200" (Not Shown)	36-29304-10		EFNP	
55	*Connector, DSSI Terminator	12-29258-01			
56	*Encoder Set, Lens (DSSI Unit ID Plug)	12-28766-19			
57	*Filler, Tape Drive (See Note 1)	74-36425-01			
58	*Shock Assembly, Top (TK50/TK70) (See Note 1)	70-25452-03			
59	*Shock Assembly, Bottom (TK50/TK70) (See Note 1)	70-25452-04			
60	*Cable Assembly, 5-Pin to 4-Pin TK Adapter Power	17-01937-01			
	NOTE 1: Installed When No Tape Drive Is Used.				

FIG.& ITEM NO.	DESCRIPTION	DEC PART NO.	ECO CUT-IN 660QR 00001	USED ON CODE	REF FIG NO.
1-					
61	* Cable Assembly, Flat 50 Cond Memory	17-01898-01			
62	* Cable Assembly, Flat 50 Cond Memory	17-01898-03			
63	* Bag, Poly Reclose (deleted)	99-06557-30			
	* Bag, Poly Reclose (Not Shown) (replaces 99-06557-30)	99-06557-36			
64	* Label, "German EMI Postcard" (deleted)	36-35900-04			
	* Label, "FTZ Postcard" (replaces 36-35900-04) (Not Shown)	36-30422-08	00003	BDFHK MPSUW	
65	* Documentation, "VAX 4000 Model 200 BA215 Installation Guide" (Not Shown)	EK-V400R-IN			
66	* Power Cord, 120V (2.5M) (BN20M-2E) (US/Japan/Canada) (See Note 2)	17-00083-11		ACEGJ LNRTV	
67	* Label, "Attention, Pre-Installed Software" (Not Shown)	36-28979-01			
68	* Kit, Q-bus Grant Continuity Kit (Not Shown)	M9047-SA			
69	* Label, "Serial/Model DS500 120V, UK"	36-27329-08		ACEGJ LNRTV	
70	* Label, "Serial/Model DS500 220V, UK"	36-27329-10		BDFHK MPSUW	
71	* Label, "Serial/Model DS500 120V, Canada"	36-27329-23		ACEGJ LNRTV	
72	* Label, "Serial/Model DS500 220V, Canada"	36-27329-24		BDFHK MPSUW	
73	* Label, "BA215 Base 100/120V, UK"	36-29305-03		CGLRV	
74	* Label, "BA215 Base 220/240V, UK"	36-29305-04		DHMSW	
75	* Label, "BA215 Base 100/120V, Canada"	36-29305-10		CGLRV	
76	* Label, "BA215 Base 220V/240V, Canada"	36-29305-12		DHMSW	
77	* Cable Assembly, 06 Cond Console Terminal	17-00811-03		ACEGJ LNRTV	
78	* Key, Plastic	12-17119-01		CDGHL MRSVW	
79	* Screwdriver, Flat Blade (Not Shown)	47-00042-00			
80	* Label, "S-Box" (Not Shown)	36-27923-02			
81	* Cable Assembly, 06 Cond Console Terminal	17-01364-02		BDFHK MPSUW	
82	* Label, "BA2XX Rev" (Sheeted) (Not Shown)	36-29164-07			
83	* Tee, BNC Coaxial	12-25869-01			
84	* Connector, BNC Coaxial	12-26318-01			
85	* Bag, Poly Reclose 4" x 8" (Not Shown)	99-06557-14			
86	* Adapter, 25D Sub (Not Shown)	12-32442-01			
87	* Port Protector, DSSI (Not Shown) (added)	12-33902-01	00002		
88	* Module 16 MB RAM (added)	MS650-BA	00003	J-S	
89	* Label, "Module Number M7622-A" (added)	36-26883-43	00003	J-S	
90	* Module, 32 MB RAM Memory (added)	MS650-BC	00004	T-W	
	NOTE 2: Reference Index For 240V Power Cords				

FIG.& ITEM NO.	DESCRIPTION	DEC PART NO.	E ECO CUT-IN 660QR 00001	USED ON CODE	REF FIG NO.
1-					
91	*Label, "Module Number M7622-BC" (added)	36-26883-C5	00004		
92	*Label, "Japan PTT" (added)	36-33180-19	00004		
93	Bracket, Top (TK50/TK70) (See Note 3)	74-33573-01			
94	Bracket, Bottom (TK50/TK70) (See Note 3)	74-33573-02			
95	Bracket, RF30 (See Note 3)	74-36498-01			
96	Shock Assembly, Bottom (RF30) (See Note 3)	70-25452-01			
97	Shock Assembly, Top (RF30) (See Note 3)	70-25452-02			
	NOTE 3; Not Part Of This Assembly, Items Shown For Reference Only.				

INDICATES FRU LEVEL PARTS.

PARTS LIST



660QR-02-SC

Figure 2. Bulkhead Assembly, H3602 Module


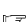



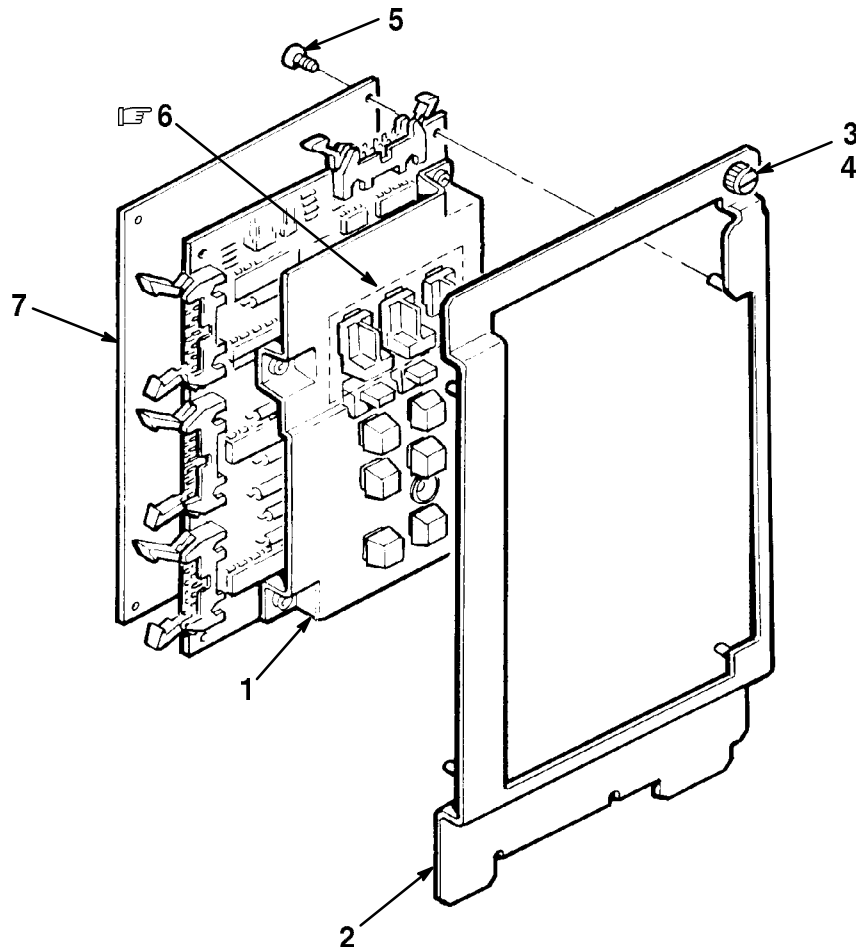
FIG.& ITEM NO.	DESCRIPTION	DEC PART NO.	K ECO CUT-IN 70-25775 00006	USED ON CODE	REF FIG NO.
2- 	MODULE ASSEMBLY, H3602 BULKHEAD	70-25775-01			1
1	*Bulkhead Assembly, Front Dual (deleted)	70-23982-11			
	*Bulkhead Assembly, Mipsfair II (replaces 70-23982-11)	70-23982-14	00008		
2	*Module, SLU Console (deleted)	54-17381-02			
	*Module, H3602-AC Console (replaces 54-17381-02)	54-17381-03	00008		
3	*Latch Assembly, 15 Pin Slide w/o Hardware	12-18489-03			
4	*Latch Assembly, 2 Piece Slide w/Hardware	12-18489-04			
 5	*Battery, 3 Cell 3.75V .18ma Nicad	12-19245-01			
6	*Tape, Velcro®	12-26595-02			
7	*Insulator, Shield	74-37167-02			
8	*Screw, Self-Tap Truss Hd No. 6 x 5/16	90-00063-78			
9	*Label, "Baud Select"	36-26584-01			
10	*Bushing, Mylar (deleted)	12-20575-01	00008		
11	*Washer, Internal Tooth Lock No. 6 (Bronze)	90-00037-05			
12	*Nut, Hex No. 1/2-28	90-10563-01			
 13	*Cable Assembly, 40 Cond Flat Ribbon	17-01032-03			
14	Fastener, 1/4 Turn (Not Part of This Assembly, Shown For Reference Only.)	12-26948-01			
15	*Screw, Self-Tap Truss Hd No. 4-40 x 5/16 (added)	90-00063-02	00007		

FIG.& ITEM NO.	DESCRIPTION	DEC PART NO. ^A	ECO CUT-IN 70-25453 00000	USED ON CODE	REF FIG NO.
3- 	PANEL ASSEMBLY, CONTROL	70-25453-01			1
1	* Panel, DSSI Control	54-17388-01			
2	* Bracket, Control Panel	74-36500-01			
3	* Screw, Shoulder Socket Hd No. 6-32 x .068	12-29665-01			
4	* Nut, Retaining	12-27764-01			
5	* Screw, Self-Tap Truss Hd No. 6 x 5/16	90-00063-78			
 6	Encoder Set, Lens (DSSI Unit ID Plug) (See Note)	12-28766-19			
7	* Label, Wiring Diagram	36-29233-01			
	NOTE: Not Part of This Assembly, Shown For Reference Only.				

  INDICATES FRU LEVEL PARTS.

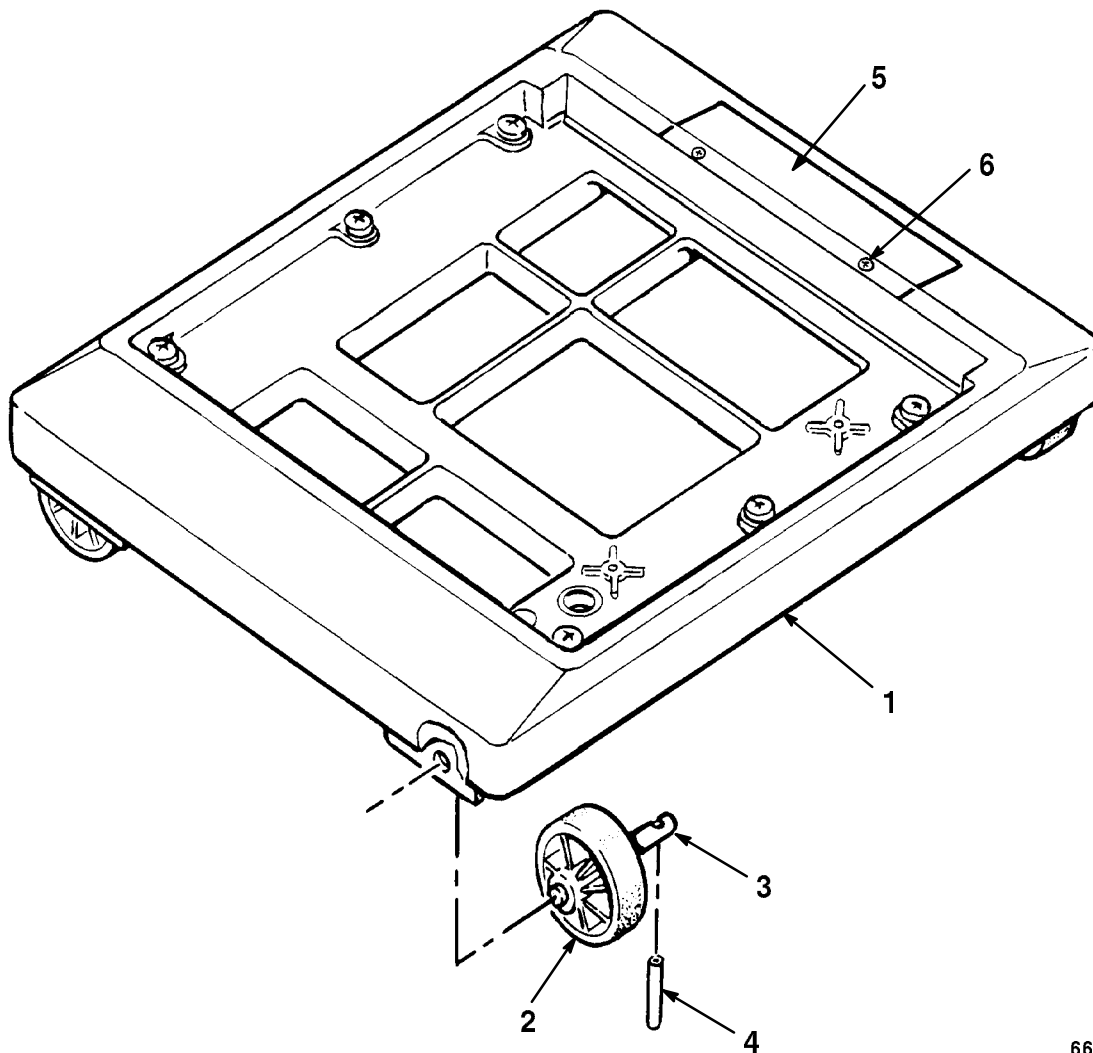


660QR-03-SC

Figure 3. Panel Assembly, Control

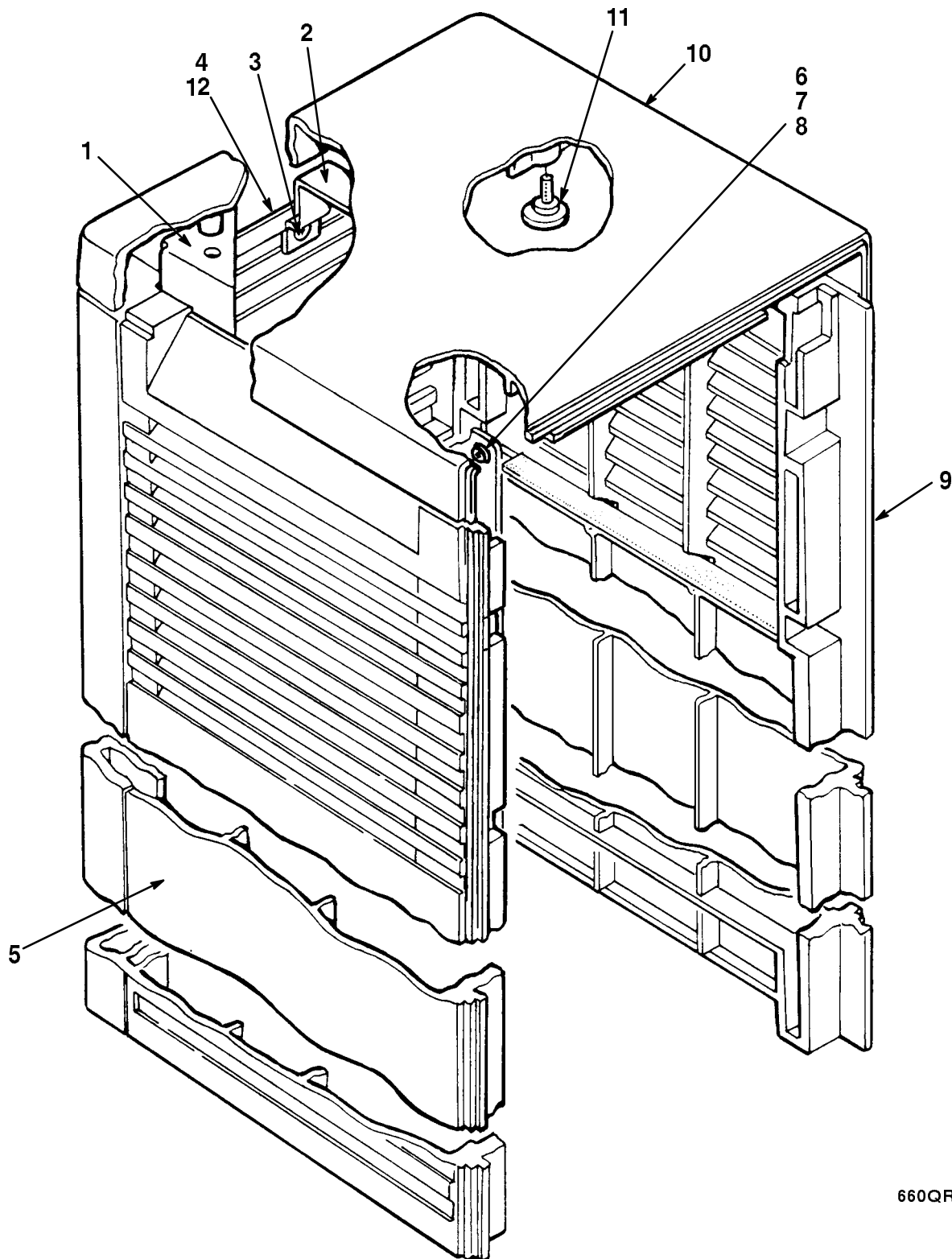
FIG.& ITEM NO.	DESCRIPTION	DEC PART NO. ^A	ECO CUT-IN 70-25434 00000	USED ON CODE	REF FIG NO.
4-	BASE ASSEMBLY	70-25434-01		CDGHL MRSVW	1
1	*Base	74-36457-01			
2	*Wheel, Base	74-34068-01			
3	*Shaft, Wheel	74-34069-01			
4	*Pin, Roll	90-09385-00			
5	*Support, Label	74-34846-01			
6	*Screw, Self-Tap Phl Pan Hd No. 6-19 x 3/8	90-09800-06			

  INDICATES FRU LEVEL PARTS.



660QR-04-SC

Figure 4. Base Assembly

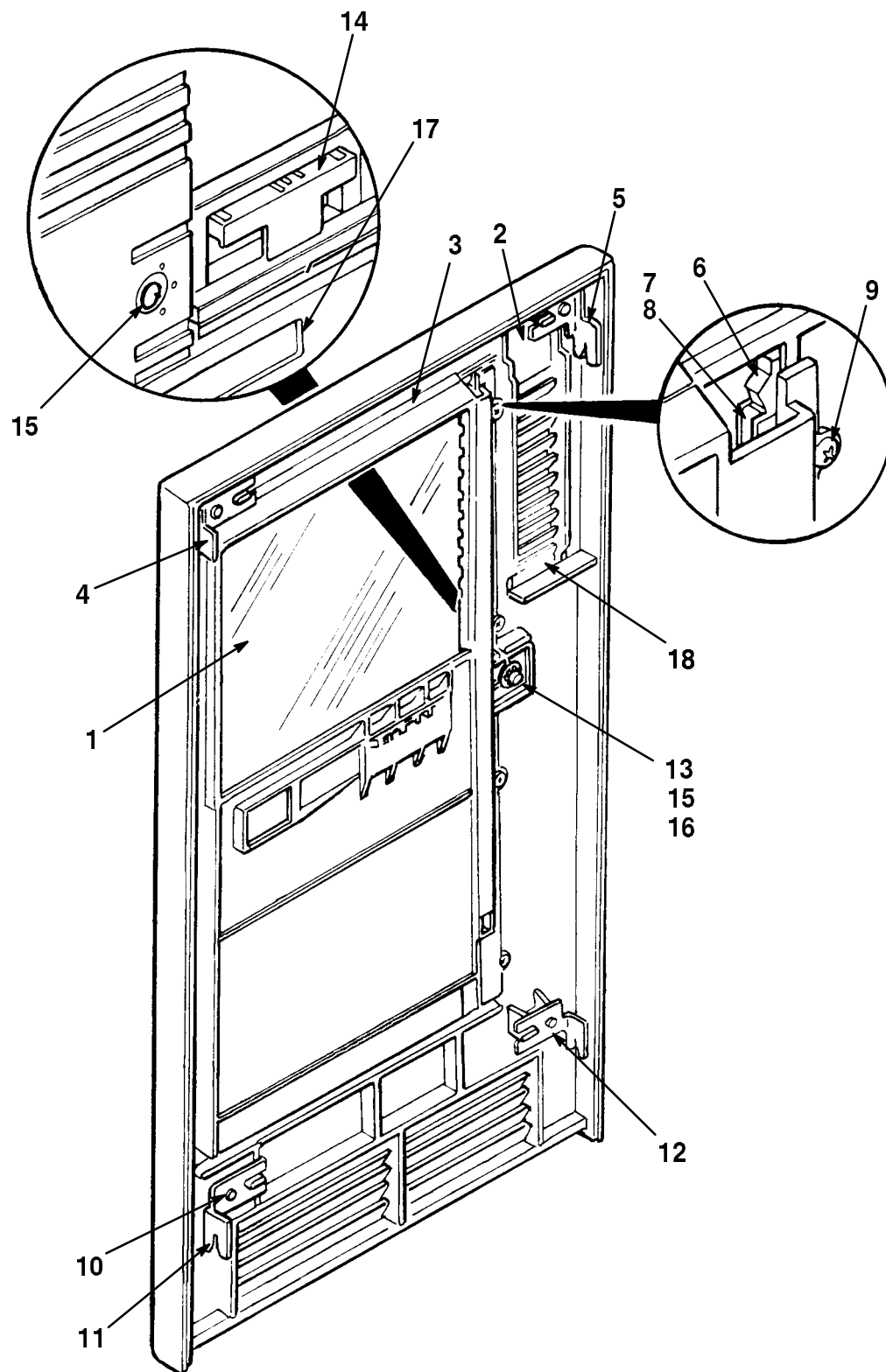


660QR-05-SC

Figure 5. Enclosure Assembly, Shell

FIG.& ITEM NO.	DESCRIPTION	^B DEC PART NO.	ECO CUT-IN 70-25432 00001	USED ON CODE	REF FIG NO.
5-	ENCLOSURE ASSEMBLY, SHELL	70-25432-01		CDGHL MRSVW	1
1	*Bracket, Corner	74-34126-01			
2	*Bracket, Side	74-34125-01			
3	*Screw, Self-Tap Phl Pan Hd No. 8-16 x 3/8	90-09800-04			
4	*Panel, Rear	74-36458-01			
5	*Panel, Left Side	74-33694-01			
6	*Sleeve	74-34424-01			
7	*Washer, Flat	90-06661-00			
8	*Screw, Self-Tap Phl Pan Hd No. 8-16 x 1/2	90-09800-08			
9	*Panel, Right Side	74-33647-01			
10	*Cover, Top	74-36456-01			
11	*Screw, Thread Rolling Shoulder	12-26868-01			
12	*Foam	74-34232-05			

INDICATES FRU LEVEL PARTS.



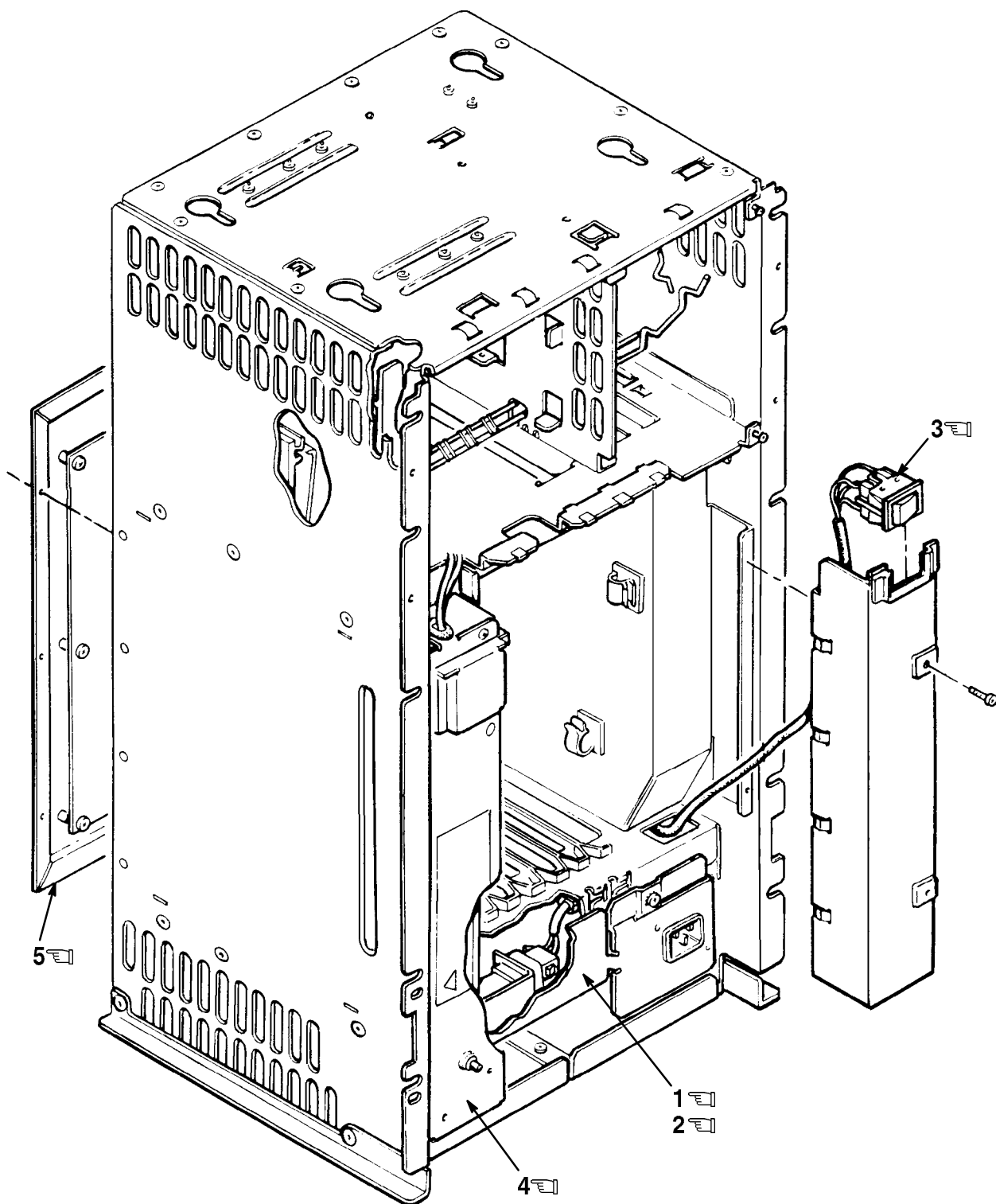
660QR-06-SC

Figure 6. Panel Assembly, Front

FIG.& ITEM NO.	DESCRIPTION	^B DEC PART NO.	ECO CUT-IN 70-25433 00001	USED ON CODE	REF FIG NO.
6-	PANEL ASSEMBLY, FRONT	70-25433-01		CDGHL MRSVW	1
1	*Door	74-34061-01			
2	*Panel, Front	74-36459-01			
3	*Bezel, Switch	74-34067-01			
4	*Bracket, Top Left	74-34123-01			
5	*Bracket, Top Right	74-34123-02			
6	*Stop, Door Position	74-34363-01			
7	*Spring, Channel	74-34066-01			
8	*Channel	74-34062-01			
9	*Screw, Self-Tap Phl Pan Hd No. 6-19 x 3/8	90-09800-06			
10	*Screw, Self-Tap Phl Pan Hd No. 8-16 x 3/8	90-09800-04			
11	*Bracket, Bottom Left	74-34124-01			
12	*Bracket, Bottom Right	74-34124-02			
13	*Latch, Slide	74-34065-01			
14	*Latch, Pull	74-34064-01			
15	*Tumbler	74-34063-01			
16	*Ring, Retaining	90-09257-05			
17	*Logo	74-36643-01			
18	*Foam	74-34232-06			

INDICATES FRU LEVEL PARTS.

PARTS LIST



660QR-07-SC

Figure 7. FRU Assemblies (For Reference Only)

PART NUMBER/DESCRIPTION INDEX

INDEX BY DEC PART NUMBER **660QR PEDESTAL SYSTEM**

PART NO.	DESCRIPTION	FIG NO.	ITEM NO.
12-17119-01	Key, Plastic	1	78
12-18489-03	Latch Assembly, 15 Pin Slide w/o Hardware	2	3
12-18489-04	Latch Assembly, 2 Piece Slide w/Hardware	2	4
12-19245-01	Battery, 3 Cell 3.75V .18ma Nicad	2	5
12-20575-01	Bushing, Mylar (deleted)	2	10
12-23609-04	Fan, Tube Axial, 4 1/2 Inch	7	2
12-25869-01	Tee, BNC Coaxial	1	83
12-26318-01	Connector, BNC Coaxial	1	84
12-26595-02	Tape, Velcro®	2	6
12-26868-01	Screw, Thread Rolling Shoulder	5	11
12-26948-01	Fastener, 1/4 Turn	2	14
12-27764-01	Nut, Retaining	3	4
12-28766-19	Encoder Set, Lens (DSSI Unit ID Plug)	3	6
12-28766-19	Encoder Set, Lens (DSSI Unit ID Plug)	1	56
12-29258-01	Connector, DSSI Terminator	1	55
12-29665-01	Screw, Shoulder Socket Hd No. 6-32 x .068	3	3
12-32442-01	Adapter, 25D Sub (Not Shown)	1	86
12-33902-01	Port Protector, DSSI (Not Shown) (added)	1	87
17-00083-11	Power Cord, 120V (2.5M) (BN20M-2E) (US/Japan/Canada)	1	66
17-00083-12	Power Cord, 240V (2.5M) (BN20N-2E) (US/Japan/Canada)	1	Not Shown
17-00198-13	Power Cord, 240V (2.5M) (BN25Q-2E) (Australia/New Zealand)	1	Not Shown
17-00199-18	Power Cord, 240V (2.5M) (BN25V-2E)) (Central Europe)	1	Not Shown
17-00209-18	Power Cord, 240V (2.5M) (BN26E-2E) (UK/Ireland)	1	Not Shown
17-00210-06	Power Cord, 240V (2.5M) (BN19F-2E) (Switzerland)	1	Not Shown
17-00310-06	Power Cord, 240V (2.5M) (BN19L-2E) (Denmark)	1	Not Shown
17-00364-17	Power Cord, 240V (2.5M) (BN24Y-2E) (Italy)	1	Not Shown
17-00456-15	Power Cord, 240V (2.5M) (BN22Y-2E) (India/S. Africa)	1	Not Shown
17-00457-15	Power Cord, 240V (2.5M) (BN22N-2E) (Israel)	1	Not Shown
17-00811-03	Cable Assembly, 06 Cond Console Terminal	1	77
17-01032-03	Cable Assembly, 40 Cond Flat Ribbon	2	13
17-01364-02	Cable Assembly, 06 Cond Console Terminal	1	81
17-01898-01	Cable Assembly, Flat 50 Cond Memory	1	61
17-01898-03	Cable Assembly, Flat 50 Cond Memory	1	62
17-01937-01	Cable Assembly, 5-Pin to 4-Pin TK Adapter Power	1	60
17-01938-01	Harness Assembly, Wire	7	3
17-01962-01	Cable Assembly, Internal DSSI Daisy-Chain, 50 Cond Flat	1	27
17-01963-01	Cable Assembly, KA640 DSSI, 50 Cond Round	1	28
17-01964-01	Cable Assembly, 10 Cond Round (From Backplane to OCP)	1	29
17-01965-01	Harness Assembly, DC Storage (From Power Supply to RF and TK)	1	26
36-17905-16	Label, "Warning Equipment Rating 100/120V" (Not Shown)	1	43
36-17905-17	Label, "Warning Equipment Rating 220/240V" (Not Shown)	1	44
36-18460-06	Label, "Bar Code" (Not Shown)	1	48
36-26584-01	Label, "Baud Select"	2	9
36-26883-43	Label, "Module Number M7622-A" (added)	1	89
36-26883-A6	Label, "Module Number M7626-AA"	1	8

INDEX BY DEC PART NUMBER
660QR PEDESTAL SYSTEM

PART NO.	DESCRIPTION	FIG NO.	ITEM NO.
36-26883-A7	Label, "Module Number M7626-BA"	1	9
36-26883-C5	Label, "Module Number M7622-BC" (added)	1	90
36-27329-07	Label, "Serial/Model DS500 100V, USA"	1	15
36-27329-08	Label, "Serial/Model DS500 120V, UK"	1	69
36-27329-09	Label, "Serial/Model DS500 200V, USA"	1	16
36-27329-10	Label, "Serial/Model DS500 220V, UK"	1	70
36-27329-23	Label, "Serial/Model DS500 120V, Canada"	1	71
36-27329-24	Label, "Serial/Model DS500 220V, Canada"	1	72
36-27923-02	Label, "S-Box" (Not Shown)	1	80
36-28979-01	Label, "Attention, Pre-Installed Software" (Not Shown)	1	67
36-29163-07	Label, "BA2XX Rev" (Rolled) (Not Shown)	1	3
36-29164-07	Label, "BA2XX Rev" (Sheeted) (Not Shown)	1	82
36-29233-01	Label, Wiring Diagram	3	7
36-29304-08	Label, "Logo/Model, VAX 4000 Model 200" (Not Shown)	1	52
36-29304-09	Label, "Logo/Model, rtVAX 4000 Model 200" (Not Shown)	1	53
36-29304-10	Label, "Logo/Model, VAXserver 4000 Model 200" (Not Shown)	1	54
36-29305-01	Label, "BA215 Base 100/120V, USA"	1	17
36-29305-02	Label, "BA215 Base 220/240V, USA"	1	18
36-29305-03	Label, "BA215 Base 100/120V, UK"	1	73
36-29305-04	Label, "BA215 Base 220/240V, UK"	1	74
36-29305-10	Label, "BA215 Base 100/120V, Canada"	1	75
36-29305-12	Label, "BA215 Base 220/240V, Canada"	1	76
36-29341-01	Label, "Control Panel"	1	35
36-29343-01	Label, "Shipping Bracket" (Not Shown)	1	12
36-30422-08	Label, "FTZ Postcard" (Not Shown) (replaces 36-35900-04)	1	64
36-33180-19	Label, "Japan PTT" (added)	1	92
36-35900-04	Label, "German EMI Postcard" (deleted)	1	64
37-01072-01	Package Assembly (Not Shown)	1	13
37-01072-02	Package Assembly (Not Shown)	1	14
47-00042-00	Screwdriver, Flat Blade (Not Shown)	1	79
54-17381-02	Module, SLU Console (deleted)	2	2
54-17381-03	Module, H3602-AC Console (replaces 54-17381-02)	2	2
54-17388-01	Panel, DSSI Control	3	1
660QR-A2	660QR-A2 120V Timeshare (w/o Skins)	1	N/A
660QR-A3	660QR-A3 240V Timeshare (w/o Skins)	1	N/A
660QR-B2	660QR-B2 120V Timeshare (w/Skins)	1	N/A
660QR-B3	660QR-B3 240V Timeshare (w/Skins)	1	N/A
660QR-C2	660QR-C2 120V Server (w/o Skins)	1	N/A
660QR-C3	660QR-C3 240V Server (w/o Skins)	1	N/A
660QR-D2	660QR-D2 120V Server (w/Skins)	1	N/A
660QR-D3	660QR-D3 240V Server (w/Skins)	1	N/A
660QR-E2	660QR-E2 120V Timeshare (w/o Skins) (added)	1	N/A
660QR-E3	660QR-E3 240V Timeshare (w/o Skins) (added)	1	N/A
660QR-F2	660QR-F2 120V Timeshare (w/Skins) (added)	1	N/A
660QR-F3	660QR-F3 240V Timeshare (w/Skins) (added)	1	N/A
660QR-H2	660QR-H2 120V Server (w/o Skins) (added)	1	N/A
660QR-H3	660QR-H3 240V Server (w/o Skins) (added)	1	N/A
660QR-J2	660QR-J2 120V Server (w/Skins) (added)	1	N/A

INDEX BY DEC PART NUMBER
660QR PEDESTAL SYSTEM

PART NO.	DESCRIPTION	FIG NO.	ITEM NO.
660QR-J3	660QR-J3 240V Server (w/Skins) (added)	1	N/A
660QR-K2	660QR-K2 120V Timeshare (w/o Skins) (added)	1	N/A
660QR-K3	660QR-K3 240V Timeshare (w/o Skins) (added)	1	N/A
660QR-L2	660QR-L2 120V Timeshare (w/Skins) (added)	1	N/A
660QR-L3	660QR-L3 240V Timeshare (w/Skins) (added)	1	N/A
70-23981-01	Bulkhead Assembly, Front	1	21
70-23981-04	Bulkhead Assembly, Front (w/TQK50 Cable Egress)	1	22
70-23982-11	Bulkhead Assembly, Front Dual (deleted)	2	1
70-23982-14	Bulkhead Assembly, Mipsfair II (replaces 70-23982-11)	2	1
70-24071-01	Panel Assembly, Gap Filler	1	23
70-25432-01	ENCLOSURE ASSEMBLY, SHELL	1	19
70-25432-01	ENCLOSURE ASSEMBLY, SHELL	5	N/A
70-25433-01	PANEL ASSEMBLY, FRONT	6	N/A
70-25433-01	PANEL ASSEMBLY, FRONT	1	20
70-25434-01	BASE ASSEMBLY	4	N/A
70-25434-01	BASE ASSEMBLY	1	25
70-25447-01	Backplane Assembly	7	5
70-25451-01	CHASSIS ASSEMBLY	1	1
70-25451-02	CHASSIS ASSEMBLY	1	2
70-25452-01	Shock Assembly, Bottom (RF30)	1	96
70-25452-02	Shock Assembly, Top (RF30)	1	97
70-25452-03	Shock Assembly, Top (TK50/TK70)	1	58
70-25452-04	Shock Assembly, Bottom (TK50/TK70)	1	59
70-25453-01	PANEL ASSEMBLY, CONTROL	1	11
70-25453-01	PANEL ASSEMBLY, CONTROL	3	N/A
70-25454-01	Fan Tray Assembly	7	1
70-25760-01	KIT, ACCESSORY (deleted)	1	39
70-25760-02	KIT, ACCESSORY (deleted)	1	40
70-25760-03	KIT, ACCESSORY (deleted)	1	41
70-25760-04	KIT, ACCESSORY (deleted)	1	42
70-25775-01	MODULE ASSEMBLY, H3602 BULKHEAD	1	N/A
70-25775-01	BULKHEAD ASSEMBLY, H3602 MODULE	1	3
70-25795-01	Panel Assembly, Mass Storage	1	10
70-26208-01	Plate Assembly, Connector	1	38
74-33573-01	Bracket, Top (TK50/TK70)	1	93
74-33573-02	Bracket, Bottom (TK50/TK70)	1	94
74-33647-01	Panel, Right Side	5	9
74-33694-01	Panel, Left Side	5	5
74-34061-01	Door	6	1
74-34062-01	Channel	6	8
74-34063-01	Tumbler	6	15
74-34064-01	Latch, Pull	6	14
74-34065-01	Latch, Slide	6	13
74-34066-01	Spring, Channel	6	7
74-34067-01	Bezel, Switch	6	3
74-34068-01	Wheel, Base	4	2
74-34069-01	Shaft, Wheel	4	3
74-34123-01	Bracket, Top Left	6	4
74-34123-02	Bracket, Top Right	6	5
74-34124-01	Bracket, Bottom Left	6	11
74-34124-02	Bracket, Bottom Right	6	12
74-34125-01	Bracket, Side	5	2
74-34126-01	Bracket, Corner	5	1
74-34232-05	Foam	5	12

INDEX BY DEC PART NUMBER
660QR PEDESTAL SYSTEM

PART NO.	DESCRIPTION	FIG NO.	ITEM NO.
74-34232-06	Foam	6	18
74-34363-01	Stop, Door Position	6	6
74-34424-01	Sleeve	5	6
74-34846-01	Support, Label	4	5
74-36425-01	Filler, Tape Drive	1	57
74-36456-01	Cover, Top	5	10
74-36457-01	Base	4	1
74-36458-01	Panel, Rear	5	4
74-36459-01	Panel, Front	6	2
74-36498-01	Bracket, RF30	1	95
74-36500-01	Bracket, Control Panel	3	2
74-36643-01	Logo	6	17
74-36712-01	Bracket, Base Mounting, Right	1	46
74-36712-02	Bracket, Base Mounting, Left	1	47
74-36884-09	Medallion, VAX 4000 Model 200	1	49
74-36884-10	Medallion, rtVAX 4000 Model 200	1	50
74-36884-13	Medallion, VAXserver 4000 Model 200	1	51
74-37167-02	Insulator, Shield	2	7
90-00037-05	Washer, Internal Tooth Lock No. 6 (Bronze)	2	11
90-00049-30	Screw, Sems Phl Truss Hd No. 6-32 x 1/4	1	37
90-00063-02	Screw, Self-Tap Truss Hd No. 4-40 x 5/16 (replaces 90-00063-78)	2	8
90-00063-02	Screw, Self-Tap Truss Hd No. 4-40 x 5/16 (added)	2	15
90-00063-78	Screw, Self-Tap Truss Hd No. 6 x 5/16 (deleted)	2	8
90-00063-78	Screw, Self-Tap Truss Hd No. 6 x 5/16	3	5
90-06370-08	Screw, Captive Hex Hd No. 1/4-20	1	31
90-06637-00	Washer, Internal Lock	1	32
90-06661-00	Washer, Flat	1	34
90-06661-00	Washer, Flat	5	7
90-07064-00	Plug, Button	1	45
90-09257-05	Ring, Retaining	6	16
90-09385-00	Pin, Roll	4	4
90-09643-03	Screw, Sems Phl Pan Hd No. 4-40 x 1/2	1	36
90-09800-04	Screw, Self-Tap Phl Pan Hd No. 8-16 x 3/8	5	3
90-09800-04	Screw, Self-Tap Phl Pan Hd No. 8-16 x 3/8	6	10
90-09800-06	Screw, Self-Tap Phl Pan Hd No. 6-19 x 3/8	4	6
90-09800-06	Screw, Self-Tap Phl Pan Hd No. 6-19 x 3/8	6	9
90-09800-08	Screw, Self-Tap Phl Pan Hd No. 8-16 x 1/2	1	33
90-09800-08	Screw, Self-Tap Phl Pan Hd No. 8-16 x 1/2	5	8
90-10563-01	Nut, Hex No. 1/2-28	2	12
90-10917-01	Screw, Mach Flat Hd 02.5M x .08	1	24
99-06557-14	Bag, Poly Reclose 4" x 8" (Not Shown)	1	85
99-06557-30	Bag, Poly Reclose (deleted)	1	63
99-06557-36	Bag, Poly Reclose (Not Shown) (replaces 99-06557-30)	1	63
EK-V400R-IN	Documentation, "VAX 4000 Model 200 BA215 Installation Guide" (Not Shown)	1	65
H7868-A	Power Supply Assembly, H7868, 100/120V	7	4
H7868-B	Power Supply Assembly, H7868, 220/240V	7	4
M7626-AA	Module, MicroVAX CPU	1	4
M7626-BA	Module, MicroVAX CPU	1	5
M9047-SA	Kit, Q-bus Grant Continuity Kit (Not Shown)	1	68
MS650-BA	Module 16 MB RAM (added)	1	88

INDEX BY DEC PART NUMBER
660QR PEDESTAL SYSTEM

PART NO.	DESCRIPTION	FIG NO.	ITEM NO.
MS650-BB	Module, 8 MB RAM (M7622-BA)	1	6
MS650-BC	Module, 32 MB RAM Memory (added)	1	90

INDEX BY DEC PART DESCRIPTION
660QR PEDESTAL SYSTEM

DESCRIPTION	DEC PART NO.	FIG. NO.	ITEM NO.
660QR PEDESTAL SYSTEM	N/A	1	N/A
660QR-A2 120V Timeshare (w/o Skins)	660QR-A2	1	N/A
660QR-A3 240V Timeshare (w/o Skins)	660QR-A3	1	N/A
660QR-B2 120V Timeshare (w/Skins)	660QR-B2	1	N/A
660QR-B3 240V Timeshare (w/Skins)	660QR-B3	1	N/A
660QR-C2 120V Server (w/o Skins)	660QR-C2	1	N/A
660QR-C3 240V Server (w/o Skins)	660QR-C3	1	N/A
660QR-D2 120V Server (w/Skins)	660QR-D2	1	N/A
660QR-D3 240V Server (w/Skins)	660QR-D3	1	N/A
660QR-E2 120V Timeshare (w/o Skins) (added)	660QR-E2	1	N/A
660QR-E3 240V Timeshare (w/o Skins) (added)	660QR-E3	1	N/A
660QR-F2 120V Timeshare (w/Skins) (added)	660QR-F2	1	N/A
660QR-F3 240V Timeshare (w/Skins) (added)	660QR-F3	1	N/A
660QR-H2 120V Server (w/o Skins) (added)	660QR-H2	1	N/A
660QR-H3 240V Server (w/o Skins) (added)	660QR-H3	1	N/A
660QR-J2 120V Server (w/Skins) (added)	660QR-J2	1	N/A
660QR-J3 240V Server (w/Skins) (added)	660QR-J3	1	N/A
660QR-K2 120V Timeshare (w/o Skins) (added)	660QR-K2	1	N/A
660QR-K3 240V Timeshare (w/o Skins) (added)	660QR-K3	1	N/A
660QR-L2 120V Timeshare (w/Skins) (added)	660QR-L2	1	N/A
660QR-L3 240V Timeshare (w/Skins) (added)	660QR-L3	1	N/A
Adapter, 25D Sub (Not Shown)	12-32442-01	1	86
Backplane Assembly	70-25447-01	7	5
Bag, Poly Reclose (deleted)	99-06557-30	1	63
Bag, Poly Reclose (Not Shown) (replaces 99-06557-30)	99-06557-36	1	63
Bag, Poly Reclose 4" x 8" (Not Shown)	99-06557-14	1	85
Base	74-36457-01	4	1
BASE ASSEMBLY	70-25434-01	4	N/A
BASE ASSEMBLY	70-25434-01	1	25
Battery, 3 Cell 3.75V .18ma Nicad	12-19245-01	2	5
Bezel, Switch	74-34067-01	6	3
Bracket, Base Mounting, Left	74-36712-02	1	47
Bracket, Base Mounting, Right	74-36712-01	1	46
Bracket, Bottom (TK50/TK70)	74-33573-02	1	94
Bracket, Bottom Left	74-34124-01	6	11
Bracket, Bottom Right	74-34124-02	6	12
Bracket, Control Panel	74-36500-01	3	2
Bracket, Corner	74-34126-01	5	1
Bracket, RF30	74-36498-01	1	95
Bracket, Side	74-34125-01	5	2
Bracket, Top (TK50/TK70)	74-33573-01	1	93
Bracket, Top Left	74-34123-01	6	4
Bracket, Top Right	74-34123-02	6	5
Bulkhead Assembly, Front	70-23981-01	1	21
Bulkhead Assembly, Front (w/TQK50 Cable Egress)	70-23981-04	1	22
Bulkhead Assembly, Front Dual (deleted)	70-23982-11	2	1
BULKHEAD ASSEMBLY, H3602 MODULE	70-25775-01	1	3
Bulkhead Assembly, Mipsfair II (replaces 70-23982-11)	70-23982-14	2	1
Bushing, Mylar (deleted)	12-20575-01	2	10
Cable Assembly, 06 Cond Console Terminal	17-01364-02	1	81
Cable Assembly, 06 Cond Console Terminal	17-00811-03	1	77
Cable Assembly, 10 Cond Round (Backplane to OCP)	17-01964-01	1	29
Cable Assembly, 40 Cond Flat Ribbon	17-01032-03	2	13

INDEX BY DEC PART DESCRIPTION
660QR PEDESTAL SYSTEM

DESCRIPTION	DEC PART NO.	FIG. NO.	ITEM NO.
Cable Assembly, 5-Pin to 4-Pin TK Adapter Power	17-01937-01	1	60
Cable Assembly, Flat 50 Cond Memory	17-01898-03	1	62
Cable Assembly, Flat 50 Cond Memory	17-01898-01	1	61
Cable Assembly, Internal DSSI Daisy-Chain, 50 Cond Flat	17-01962-01	1	27
Cable Assembly, KA640 DSSI, 50 Cond Round	17-01963-01	1	28
Channel	74-34062-01	6	8
CHASSIS ASSEMBLY	70-25451-01	1	1
CHASSIS ASSEMBLY	70-25451-02	1	2
Connector, BNC Coaxial	12-26318-01	1	84
Connector, DSSI Terminator	12-29258-01	1	55
Cover, Top	74-36456-01	5	10
Documentation, "VAX 4000 Model 200 BA215 Installation Guide" (Not Shown)	EK-V400R-IN	1	65
Door	74-34061-01	6	1
ENCLOSURE ASSEMBLY, SHELL	70-25432-01	1	19
ENCLOSURE ASSEMBLY, SHELL	70-25432-01	5	N/A
Encoder Set, Lens (DSSI Unit ID Plug)	12-28766-19	1	56
Encoder Set, Lens (DSSI Unit ID Plug)	12-28766-19	3	6
Fan Tray Assembly	70-25454-01	7	1
Fan, Tube Axial, 4 1/2 Inch	12-23609-04	7	2
Fastener, 1/4 Turn	12-26948-01	2	14
Filler, Tape Drive	74-36425-01	1	57
Foam	74-34232-05	5	12
Foam	74-34232-06	6	18
FRU ASSEMBLIES (For Reference Only)	N/A	7	N/A
Harness Assembly, DC Storage (From Power Supply to RF and TK)	17-01965-01	1	26
Harness Assembly, Wire	17-01938-01	7	3
Insulator, Shield	74-37167-02	2	7
Key, Plastic	12-17119-01	1	78
KIT, ACCESSORY (deleted)	70-25760-03	1	41
KIT, ACCESSORY (deleted)	70-25760-01	1	39
KIT, ACCESSORY (deleted)	70-25760-02	1	40
KIT, ACCESSORY (deleted)	70-25760-04	1	42
Kit, Q-bus Grant Continuity Kit (Not Shown)	M9047-SA	1	68
Label, "Attention, Pre-Installed Software" (Not Shown)	36-28979-01	1	67
Label, "BA215 Base 100/120V, Canada"	36-29305-10	1	75
Label, "BA215 Base 100/120V, UK"	36-29305-03	1	73
Label, "BA215 Base 100/120V, USA"	36-29305-01	1	17
Label, "BA215 Base 220/240V, Canada"	36-29305-12	1	76
Label, "BA215 Base 220/240V, UK"	36-29305-04	1	74
Label, "BA215 Base 220/240V, USA"	36-29305-02	1	18
Label, "BA2XX Rev" (Rolled) (Not Shown)	36-29163-07	1	30
Label, "BA2XX Rev" (Sheeted) (Not Shown)	36-29164-07	1	82
Label, "Bar Code" (Not Shown)	36-18460-06	1	48
Label, "Baud Select"	36-26584-01	2	9
Label, "Control Panel"	36-29341-01	1	35
Label, "FTZ Postcard" (Not Shown) (replaces 36-35900-04)	36-30422-08	1	64
Label, "German EMI Postcard" (deleted)	36-35900-04	1	64
Label, "Japan PTT" (added)	36-33180-19	1	92

INDEX BY DEC PART DESCRIPTION
660QR PEDESTAL SYSTEM

DESCRIPTION	DEC PART NO.	FIG. NO.	ITEM NO.
Label, "Logo/Model, rtVAX 4000 Model 200" (Not Shown)	36-29304-09	1	53
Label, "Logo/Model, VAX 4000 Model 200" (Not Shown)	36-29304-08	1	52
Label, "Logo/Model, VAXserver 4000 Model 200" (Not Shown)	36-29304-10	1	54
Label, "Module Number MS650-BB"	36-26883-B8	1	7
Label, "Module Number M7622-A" (added)	36-26883-43	1	89
Label, "Module Number M7626-AA"	36-26883-A6	1	8
Label, "Module Number M7626-BA"	36-26883-A7	1	9
Label, "Module Number M7622-BC" (added)	36-26883-C5	1	91
Label, "S-Box" (Not Shown)	36-27923-02	1	80
Label, "Serial/Model DS500 100V, USA"	36-27329-07	1	15
Label, "Serial/Model DS500 120V, Canada"	36-27329-23	1	71
Label, "Serial/Model DS500 120V, UK"	36-27329-08	1	69
Label, "Serial/Model DS500 200V, USA"	36-27329-09	1	16
Label, "Serial/Model DS500 220V, Canada"	36-27329-24	1	72
Label, "Serial/Model DS500 220V, UK"	36-27329-10	1	70
Label, "Shipping Bracket" (Not Shown)	36-29343-01	1	12
Label, "Warning Equipment Rating 100/120V" (Not Shown)	36-17905-16	1	43
Label, "Warning Equipment Rating 220/240V" (Not Shown)	36-17905-17	1	44
Label, Wiring Diagram	36-29233-01	3	7
Latch Assembly, 15 Pin Slide w/o Hardware	12-18489-03	2	3
Latch Assembly, 2 Piece Slide w/Hardware	12-18489-04	2	4
Latch, Pull	74-34064-01	6	14
Latch, Slide	74-34065-01	6	13
Logo	74-36643-01	6	17
Medallion, rtVAX 4000 Model 200	74-36884-10	1	50
Medallion, VAX 4000 Model 200	74-36884-09	1	49
Medallion, VAXserver 4000 Model 200	74-36884-13	1	51
Module 16 MB RAM (added)	MS650-BA	1	88
MODULE ASSEMBLY, H3602 BULKHEAD	70-25775-01	1	N/A
Module, 8 MB RAM (M7622-BA)	MS650-BB	1	6
Module, 32 MB RAM Memory (added)	MS650-BC	1	90
Module, H3602-AC Console (replaces 54-17381-02)	54-17381-03	2	2
Module, MicroVAX CPU	M7626-AA	1	4
Module, MicroVAX CPU	M7626-BA	1	5
Module, SLU Console (deleted)	54-17381-02	2	2
Nut, Hex No. 1/2-28	90-10563-01	2	12
Nut, Retaining	12-27764-01	3	4
Package Assembly (Not Shown)	37-01072-02	1	14
Package Assembly (Not Shown)	37-01072-01	1	13
PANEL ASSEMBLY, CONTROL	70-25453-01	3	N/A
PANEL ASSEMBLY, CONTROL	70-25453-01	1	11
PANEL ASSEMBLY, FRONT	70-25433-01	6	N/A
PANEL ASSEMBLY, FRONT	70-25433-01	1	20
Panel Assembly, Gap Filler	70-24071-01	1	23
Panel Assembly, Mass Storage	70-25795-01	1	10
Panel, DSSI Control	54-17388-01	3	1
Panel, Front	74-36459-01	6	2
Panel, Left Side	74-33694-01	5	5
Panel, Rear	74-36458-01	5	4
Panel, Right Side	74-33647-01	5	9
Pin, Roll	90-09385-00	4	4
Plate Assembly, Connector	70-26208-01	1	38
Plug, Button	90-07064-00	1	45

INDEX BY DEC PART DESCRIPTION
660QR PEDESTAL SYSTEM

DESCRIPTION	DEC PART NO.	FIG. NO.	ITEM NO.
Port Protector, DSSI (Not Shown) (added)	12-33902-01	1	87
Power Cord, 120V (2.5M) (BN20M-2E) (US/Japan/Canada)	17-00083-11	1	66
Power Cord, 240V (2.5M) (BN19F-2E) (Switzerland)	17-00210-06	1	Not Shown
Power Cord, 240V (2.5M) (BN19L-2E) (Denmark)	17-00310-06	1	Not Shown
Power Cord, 240V (2.5M) (BN20N-2E) (US/Japan/Canada)	17-00083-12	1	Not Shown
Power Cord, 240V (2.5M) (BN22N-2E) (Israel)	17-00457-15	1	Not Shown
Power Cord, 240V (2.5M) (BN22Y-2E) (India/S. Africa)	17-00456-15	1	Not Shown
Power Cord, 240V (2.5M) (BN24Y-2E) (Italy)	17-00364-17	1	Not Shown
Power Cord, 240V (2.5M) (BN25Q-2E) (Australia/New Zealand)	17-00198-13	1	Not Shown
Power Cord, 240V (2.5M) (BN25V-2E) (Central Europe)	17-00199-18	1	Not Shown
Power Cord, 240V (2.5M) (BN26E-2E) (UK/Ireland)	17-00209-18	1	Not Shown
Power Supply Assembly, H7868, 100/120V	H7868-A	7	4
Power Supply Assembly, H7868, 220/240V	H7868-B	7	4
Ring, Retaining	90-09257-05	6	16
Screw, Captive Hex Hd No. 1/4-20	90-06370-08	1	31
Screw, Mach Flat Hd 02.5M x .08	90-10917-01	1	24
Screw, Self-Tap Phl Pan Hd No. 6-19 x 3/8	90-09800-06	6	9
Screw, Self-Tap Phl Pan Hd No. 6-19 x 3/8	90-09800-06	4	6
Screw, Self-Tap Phl Pan Hd No. 8-16 x 1/2	90-09800-08	5	8
Screw, Self-Tap Phl Pan Hd No. 8-16 x 1/2	90-09800-08	1	33
Screw, Self-Tap Phl Pan Hd No. 8-16 x 3/8	90-09800-04	6	10
Screw, Self-Tap Phl Pan Hd No. 8-16 x 3/8	90-09800-04	5	3
Screw, Self-Tap Truss Hd No. 4-40 x 5/16 (added)	90-00063-02	2	15
Screw, Self-Tap Truss Hd No. 4-40 x 5/16 (replaces 90-00063-78)	90-00063-02	2	8
Screw, Self-Tap Truss Hd No. 6 x 5/16	90-00063-78	3	5
Screw, Self-Tap Truss Hd No. 6 x 5/16 (deleted)	90-00063-78	2	8
Screw, Sems Phl Pan Hd No. 4-40 x 1/2	90-09643-03	1	36
Screw, Sems Phl Truss Hd No. 6-32 x 1/4	90-00049-30	1	37
Screw, Shoulder Socket Hd No. 6-32 x .068	12-29665-01	3	3
Screw, Thread Rolling Shoulder	12-26868-01	5	11
Screwdriver, Flat Blade (Not Shown)	47-00042-00	1	79
Shaft, Wheel	74-34069-01	4	3
Shock Assembly, Bottom (RF30)	70-25452-01	1	96
Shock Assembly, Bottom (TK50/TK70)	70-25452-04	1	59
Shock Assembly, Top (RF30)	70-25452-02	1	97
Shock Assembly, Top (TK50/TK70)	70-25452-03	1	58
Sleeve	74-34424-01	5	6
Spring, Channel	74-34066-01	6	7
Stop, Door Position	74-34363-01	6	6
Support, Label	74-34846-01	4	5
Tape, Velcro®	12-26595-02	2	6
Tee, BNC Coaxial	12-25869-01	1	83
Tumbler	74-34063-01	6	15
Washer, Flat	90-06661-00	1	34
Washer, Flat	90-06661-00	5	7
Washer, Internal Lock	90-06637-00	1	32
Washer, Internal Tooth Lock No. 6 (Bronze)	90-00037-05	2	11
Wheel, Base	74-34068-01	4	2

READER'S COMMENTS

660QR Pedestal System
Illustrated Parts Breakdown
EK-660QR-IP-003

1. How did you use this manual? (Circle your response.)

- (a) Installation (c) Maintenance (e) Training
(b) Operation/Use (d) Programming (f) Other (Please specify) _____

2. Did the manual meet your needs? Yes ☐ No ☐ Why? _____

3. Please rate the manual on the following categories. (Circle your response.)

	Excellent	Good	Fair	Poor	Unacceptable
Accuracy	5	4	3	2	1
Clarity	5	4	3	2	1
Completeness	5	4	3	2	1
Illustrations, examples	5	4	3	2	1
Overall ease of use	5	4	3	2	1
Table of Content, Index	5	4	3	2	1

4. What things did you like *most* about this manual? _____

5. What things did you like *least* about this manual? _____

6. Please list and describe any errors you found in the manual.

Page	Description/Location of Error
_____	_____
_____	_____
_____	_____
_____	_____

7. Which of the following most clearly describes your job ? (Circle your response.)

- (a) Administrative Support (e) System Manager (i) Education/Trainer
(b) Manager/Supervisor (f) Computer Operator (j) Sales/Marketing
(c) Scientist/Engineer (g) Software Support (k) Other (Please specify)
(d) Programmer/Analyst (h) Hardware Support _____

OPTIONAL INFORMATION

Name _____ Job Title _____
Street _____ Company _____
City _____ Department _____
State/Country _____ Telephone Number _____
Postal (ZIP) Code _____ Date _____

THANK YOU FOR YOUR COMMENTS AND SUGGESTIONS.

Please do not use this form to order manuals. Contact your representative at Digital Equipment Corporation or (in the USA) call our DECdirect™ department at this toll-free number : 800-258-1710