

For: DZINDOLET

Printed on: Thu, Sep 19, 1991 08:55:41

From book: EK-A0372-IP-003

Document: coverpage

Last saved on: Thu, Sep 19, 1991 08:49:20

Document: figs1-3

Last saved on: Thu, Sep 19, 1991 08:49:31

Document: figs4-7

Last saved on: Thu, Sep 19, 1991 08:49:50

Document: IndexSep

Last saved on: Fri, Jun 7, 1991 10:36:07

Document: N Index

Last saved on: Thu, Sep 19, 1991 08:50:18

Document: D Index

Last saved on: Thu, Sep 19, 1991 08:50:29

Document: READERS COMMENT

Last saved on: Thu, Sep 19, 1991 08:50:53

Document: model 20

Last saved on: Thu, Sep 19, 1991 08:51:04

Document: model10

Last saved on: Wed, Jun 12, 1991 14:33:07

ILLUSTRATED PARTS BREAKDOWN

MicroVAX 3100/VAXserver 3100 InfoServer 100 SYSTEMS

HOW TO USE THE IPB

GENERAL

This IPB is compiled following the organization and nomenclature of the engineering drawing structure.

MAJOR ASSEMBLY LOCATOR (When Applicable)

The Major Assembly Locator (first illustration) is an index that provides a description and a figure reference for all illustrations used in this manual.

INDENTED PARTS LIST

This manual identifies each assembly being broken down (figure reference callout), and all parts of that assembly. Further breakdown of an assembly is shown by an asterisk (*) preceding the item callouts in the Description Column. The number of asterisks preceding an item is used to denote the subordination of that item with respect to the Major Assembly. A single asterisk preceding an item description indicates that the item is part of the major assembly being illustrated. Items that are subordinate to single asterisks items, are denoted by two asterisks (**) and immediately follow the related single asterisk item. This system of part identification provides a means for the user to identify the next higher assembly item and make alternate selections for parts when the required replacement part of assembly is not immediately available.

COLUMN CALLOUT DESCRIPTION

Figure and Item – Indicates the figure number and item number of each part.

Description – Lists the name of the part and pertinent specifications (when required). Asterisks preceding the description denote the subordination of the part to the next higher assembly.

DEC Part No. – Lists the Digital part ordering number. A blank in this column indicates a Digital part number was not assigned at the time of publication.

ECO Cut-In – The notation at the top of this column indicates the ECO level of the system (option), at which the IPB was initially prepared. Subsequent ECO level designations, that modify existing parts or add new parts to the device, are inserted in the ECO Cut-In column next to the part that is added or modified.

Used On Code – Letters in this column correspond to the variation codes assigned in Figure 1. Parts with an Alpha notation(s) are used only in those option variations. A blank indicates that the part is used on all option variations.

Ref Fig No. – A cross reference between illustrations. For each Major Assembly, the number in this column denotes the figure of the next higher assembly. For all subassemblies, the number in this column denotes the figure showing additional detailed breakdown.

PART NUMBER/PART DESCRIPTION INDEX SECTION

Parts are indexed both numerically and alphabetically by description, referenced to a location within the IPB, by figure number and item number.

REVISION HISTORY

OTHER IPB MANUALS REFERENCED

PRINTING	ECO LEVEL			DATE	OTHER IPB MANUALS REFERENCED
3rd Printing	70-27100	00000-00004		28-JUN-91	N/A
	70-25726	00000-00002			
	70-27096	00000-00000			
	70-27099	00000-00008			
	70-27094	00000-00000			
	70-26167	00000-00001			
	70-27093	00000-00008			

Digital Equipment Corporation reserves the right, without notice, to make substitutions and modifications in the specifications of products documented in this manual and further reserves the right to withdraw any of these products from the market without notice.

Digital Equipment Corporation is not responsible for errors which may appear in the technical description (including illustrations and photographs) of the products covered by this manual.

None of the descriptions contained in this manual imply the granting of any license whatsoever to make, use or sell equipment constructed in accordance therewith.

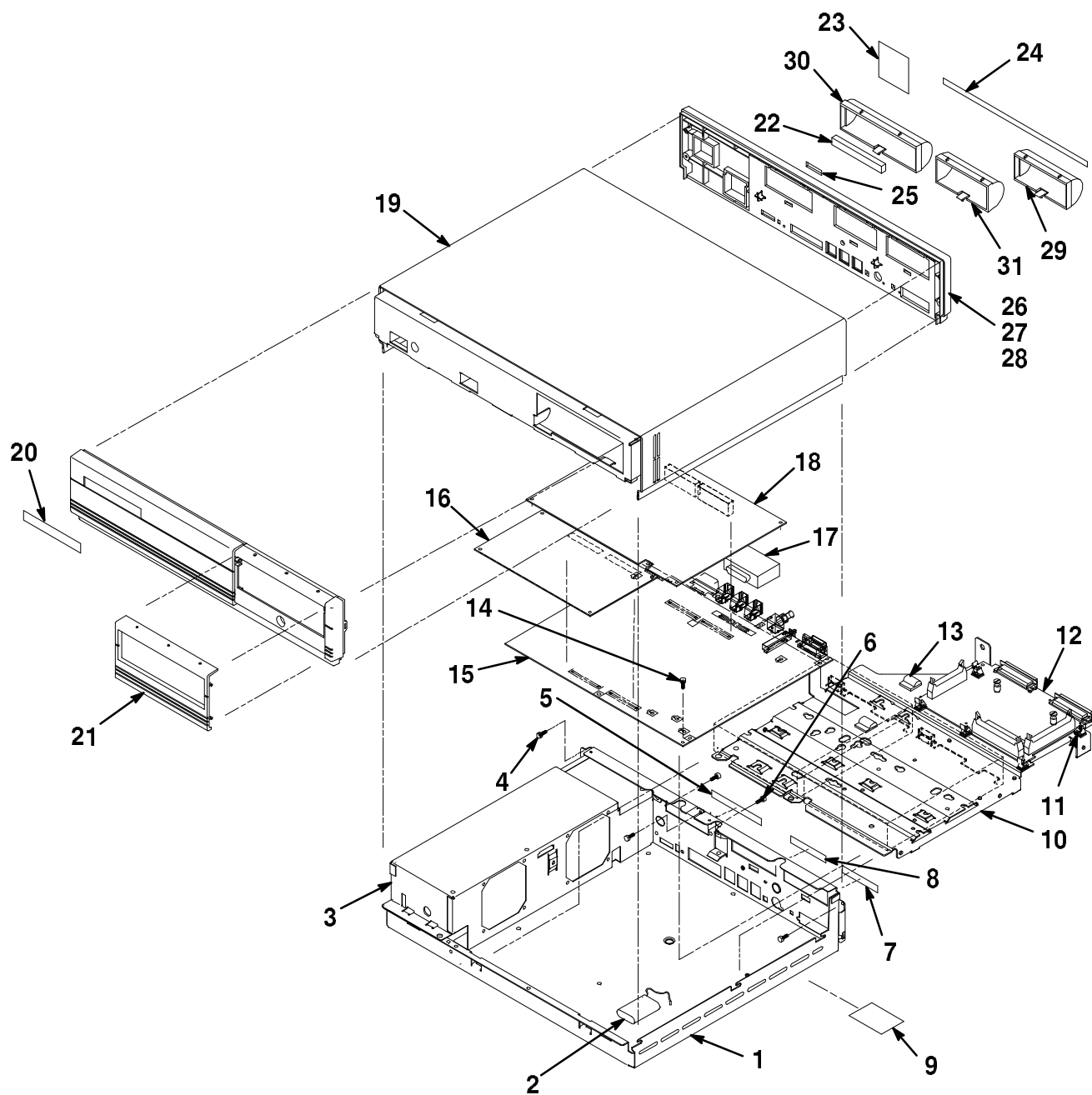
Restricted Rights: Use, duplication or disclosure by the U.S. Government is subject to restrictions as set forth in subparagraph (c) (1) (ii) of the Rights in Technical Data and Computer Software clause at DFARS 252.227-2713.

Copyright © 1989, 1991 by Digital Equipment Corporation. All rights reserved.
Printed in U.S.A.

The postage-paid READER'S COMMENTS form on the last page of this document requests your critical evaluation to assist us in preparing future documentation.

The following are trademarks of Digital Equipment Corporation :

DEC, DECUS, MicroVAX, PDP, ThinWire, UNIBUS, VAX, VAXserver and the DIGITAL Logo.



A0372-01-IL

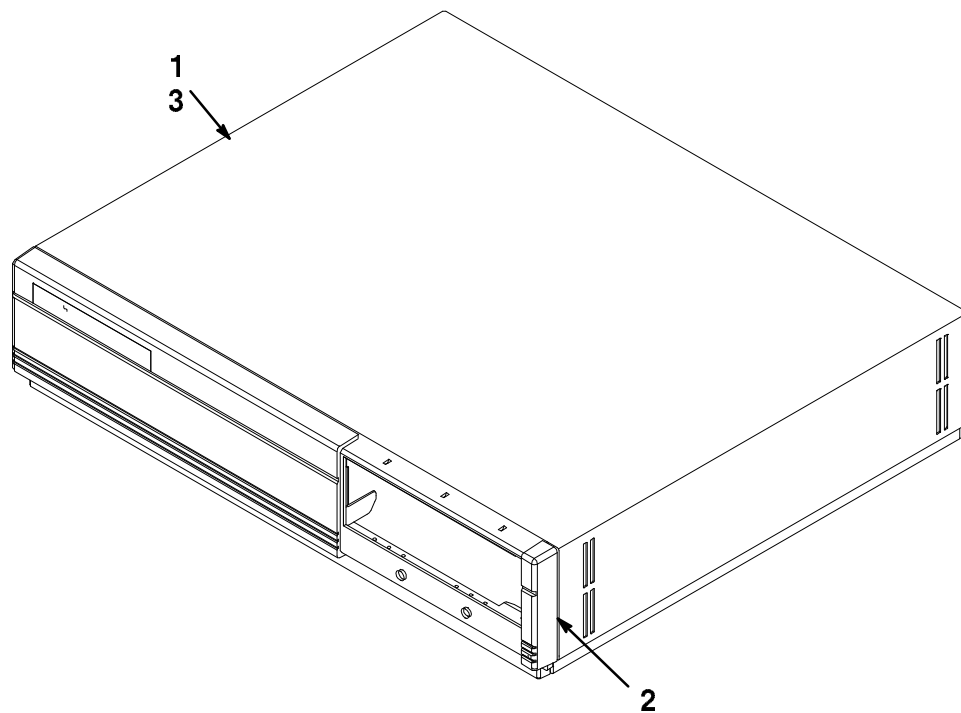
Figure 1. MicroVAX/VAXserver 3100 Systems (Models 10 and 10e)

FIG.& ITEM NO.	DESCRIPTION	DEC PART NO.	E ECO CUT-IN 70-27100 00000	USED ON CODE	REF FIG NO.
1-	MicroVAX 3100/VAXserver 3100 SYSTEMS (MODELS 10 and 10e)				
	Code A-Used on MicroVAX 3100 System	70-27100-01		A	
	Code B-Used on VAXserver 3100 System	70-27100-02		B	
	Code C-Used on MicroVAX 3100 System Model 10e (added)	70-27100-03	00004	C	
	Code D-Used on VAXserver 3100 System Model 10e (added)	70-27100-04	00004	D	
	(Used on Codes Apply to This Figure Only.)				
1	* ENCLOSURE ASSEMBLY, BOTTOM	70-27096-01			3
2	* Battery, 3 Cell 3.75 .18MA Nicad	12-19245-00			
3	* Power Supply, 122W Auto Select 100V/120V 220V/240V	H7821-00			
4	* Screw, Self-Tap Phl Pan Hd No. 4-40 x 1/4	90-09800-07			
5	* Label, "SCSI"	36-30704-02			
6	* Screw, Sems Phl Pan Hd No. 4-40 x 3/8	90-09643-00			
7	* Label, "Async Connector"	36-31382-01			
8	* Label, "Teamate II Small Box Sync Co."	36-31382-02			
9	* Label, "Regulatory BA42, UK Small Box"	36-30382-14			
	* Label, "Regulatory BA42, USA Small Box"	36-30382-13			
	* Label, "Regulatory BA42, Canada Small Box" (added)	36-30382-17	00001		
10	* Shelf, Drive	74-39291-01			
11	* Fastener, PC Board	12-21566-05			
12	* Module Assembly, Distribution	54-18858-01			
13	* Clip, Wire Routing	12-21249-06			
14	* Screw, Sems Phl Pan Hd No 6-32 x 5/16	90-09984-07			
15	* Module, CPU MicroVAX 3100 (90ns)	54-18856-01		A	
	* Module, CPU MicroVAX 3100 (60ns)(added)	54-18856-04	00004	C	
	* Module, CPU VAXserver 3100 (90ns)	54-18856-02		B	
	* Module, CPU VAXserver 3100 (60ns)(added)	54-18856-05	00004	D	
16	* Module, Memory 4MB w/Parity (54-19051-AA) (See Notes 1 and 2)	MS42-AB			
	* Module, Memory 8MB w/Parity (54-19830-AA) (See Notes 1 and 2)	MS42-KA			
	* Module, Memory 12MB w/Parity (54-18287-BA) (See Notes 1 and 2)	MS42-BA			
	* Module, Memory 16MB w/Parity (54-18324-AA) (See Notes 1 and 2)	MS42-CA			
17	* Connector, 25 DIN DSUB Male	H8575-A			
18	* Module, 1 Sync RS232/V.24 + 8 Line Asynch (54-18905-01) (See Note 1)	DSH32-BA			
19	* ENCLOSURE ASSEMBLY, TOP	70-25726-01			2
20	* Medallion, MicroVAX 3100	74-37642-07		AC	
	* Medallion, VAXServer 3100	74-37642-08		BD	

FIG.& ITEM NO.	DESCRIPTION	DEC PART NO.	E ECO CUT-IN 70-27100 00000	USED ON CODE	REF FIG NO.
1-					
21	*Insert, Blank Bezel	74-37499-01			
	*Insert, RX23 Bezel (See Note 1)	74-39959-01			
	*Insert, TZ30 Bezel (See Note 1)	74-37501-01			
22	*Connector, SCSI Term 50 Position Champ HSG	12-30552-01			
23	*Label, "Small Box PTT MicroVAX 3100"	36-31684-01		AC	
	*Label, "Small Box PTT VAXserver 3100"	36-31684-02		BD	
24	*Label, "Small Box Prod ID"	36-31685-01			
25	*Label, "Diagnostic VS42A"	36-30489-01			
26	*BEZEL ASSEMBLY, REAR	70-27097-01			
27	**Bezel, Rear	74-39033-01			
28	**Screw, Captive Phi Pan Hd No. 6-32 x 5/8	12-30940-03			
29	*Cover, Synch/Asynch (added)	74-38974-01	00003		
30	*Cover, SCSI Exit (added)	74-38975-01	00003		
31	*Cover, Single Synch (added)	74-39034-01	00003		
	NOTE 1: Items 16,18 and 21 are optional. Shown in Figure 1 and listed here for reference only.				
	NOTE 2: Item 16 is dependant on customer configuration.				
	ITEMS (Not Shown)				
	*Drive, RX23-AA Factory Installed	RX23-EM			
	*Drive, RZ2x-x 3.5Inch Factory Installed	RZ2x-xx			
	*Drive, TZ30-AA Tape Factory Installed	TZ30-EG			
	CABLES (Not Shown)				
	*Cable Assembly, Oval Data 25' 6 Cond	BC16E-25			
	*Cable Assembly, Internal Power	17-02566-01			
	*Cable Assembly, 100 Cond Flat 28AWG	17-02295-01			
	*Cable Assembly, 100 Cond Round	17-02462-01			
	*Cable Assembly, 50 Cond Round	17-02463-01			
	LABEL (Not Shown)				
	*Label, "Attention Preinstalled Software"	36-28979-01			
	*Label, "Postcard FTZ, Series BA42A" (added)	36-30422-05	00001		
	KIT (Not Shown)				
	*KIT, THICK ThinWire ETHERNET	70-26209-01			
	**Connector, Coax BNC 50 Ohms	12-26318-01			
	**Tee, Coax BNC	12-25869-01			
	**Connector, 15 Pin Ethernet Loopback	12-22196-01			

THIS PAGE INTENTIONALLY LEFT BLANK

FIG.& ITEM NO.	DESCRIPTION	DEC PART NO.	ECO CUT-IN 70-25726 00000	USED ON CODE	REF FIG NO.
2-	ENCLOSURE ASSEMBLY, TOP	70-25726-01	00002		1
1	*Weldment, Top Enclosure	70-25786-01			
2	*Bezel Assembly, Front	70-25797-01			
3	*Screw, Machine Phl Pan Hd No. 4-40 x 3/16	90-08032-01			

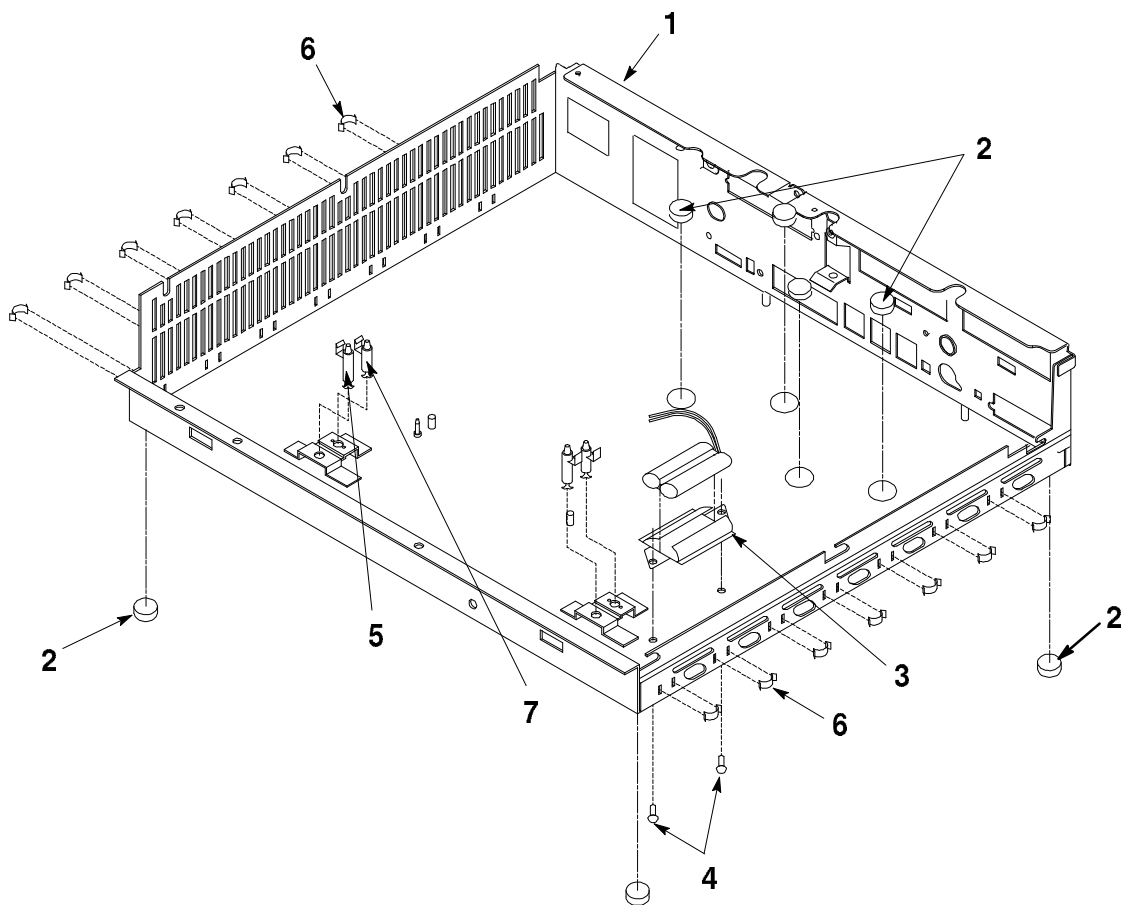


A0372-02-IL

Figure 2. Enclosure Assembly, Top

THIS PAGE INTENTIONALLY LEFT BLANK

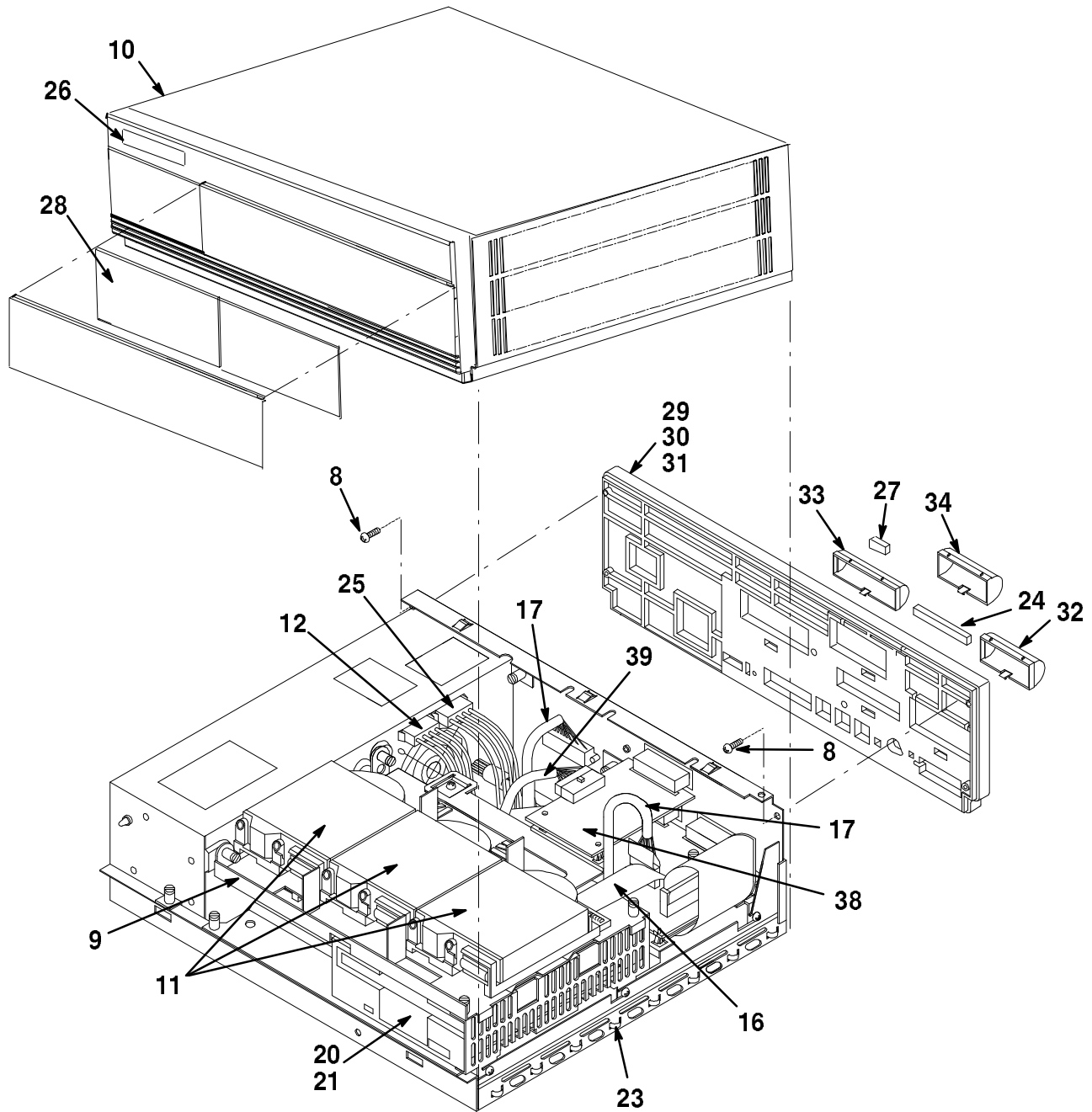
FIG.& ITEM NO.	DESCRIPTION	DEC PART NO.	ECO CUT-IN 70-27096 00000	USED ON CODE	REF FIG NO.
3-	ENCLOSURE ASSEMBLY, BOTTOM	70-27096-01			1
1	* Enclosure, Bottom	74-39290-01			
2	* Bumper, Self-Adh.	90-10738-01			
3	* Holder, Battery Pack (See Note)	74-33477-01			
4	* Rivet, Blind Binder	90-10413-02			
5	* Standoff, Nylon	12-19857-05			
6	* Finger, Grounding	12-26922-01			
7	* Standoff, Nylon	12-30106-03			
	NOTE: Battery shown is part of Figure 1.				



A0372-03-IL

Figure 3. Enclosure Assembly, Bottom

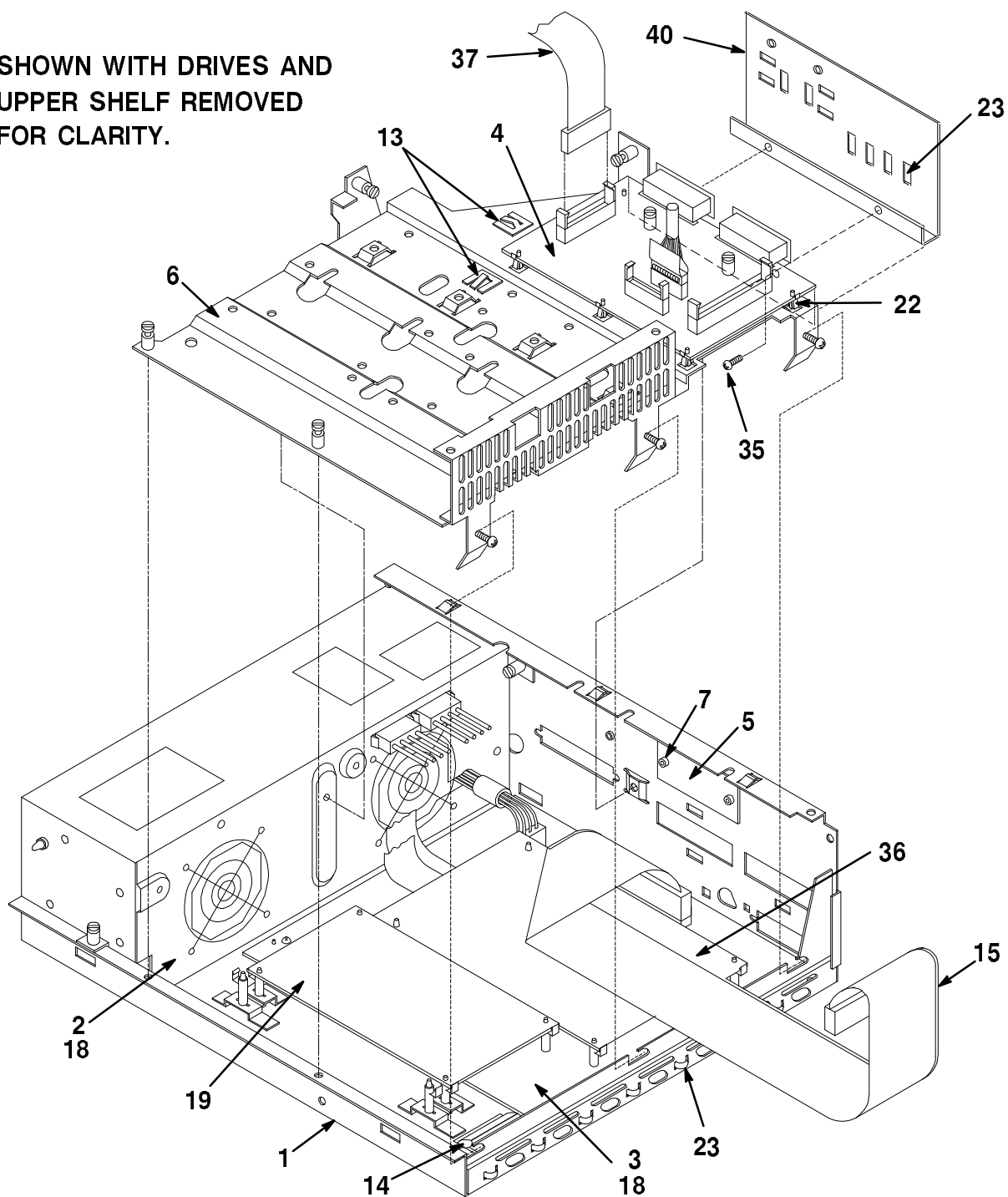
THIS PAGE INTENTIONALLY LEFT BLANK



A0372-04-IL

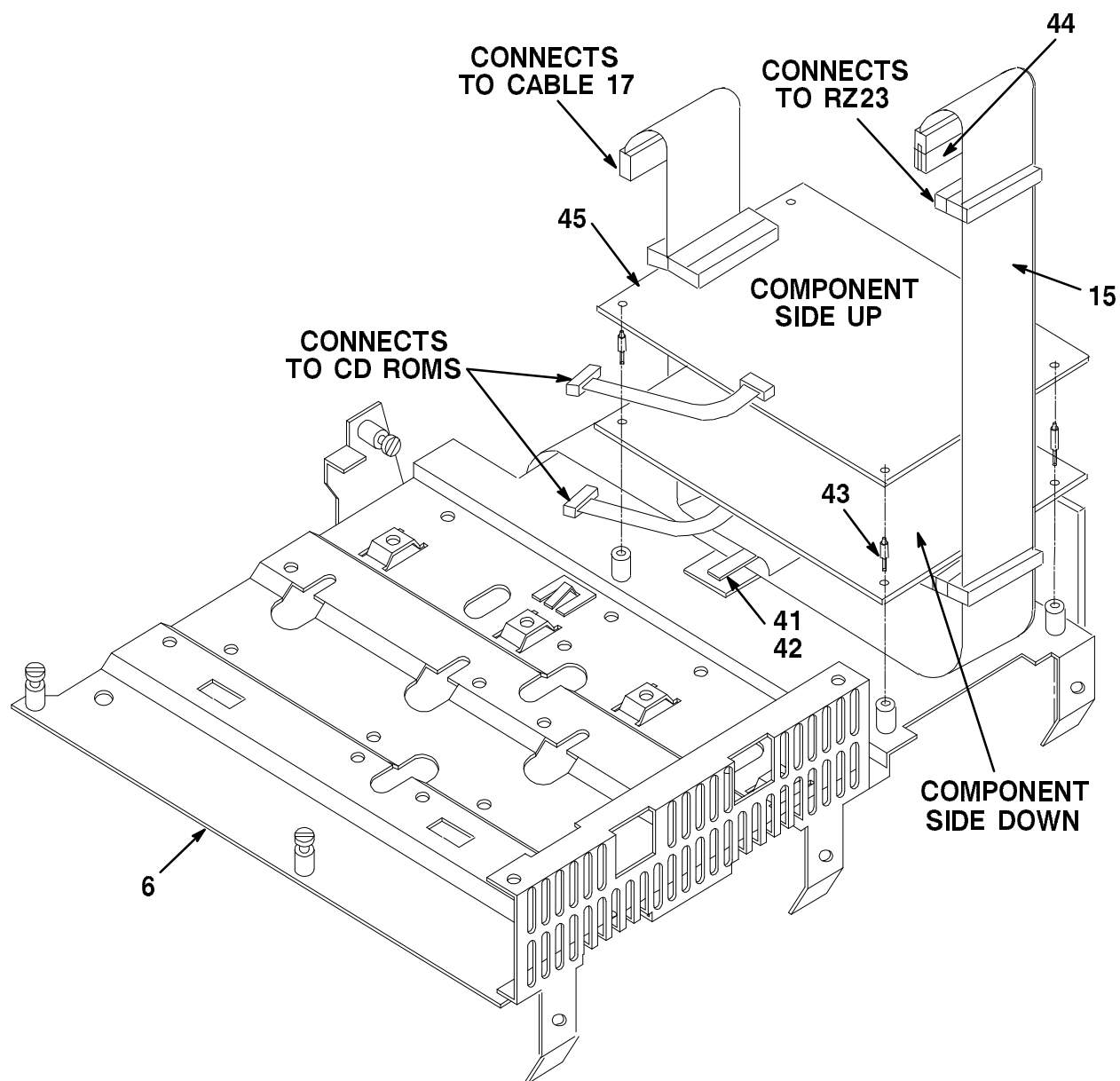
Figure 4. MicroVAX/VAXserver 3100 Systems (Models 20 and 20e) (Sheet 1 of 3)

SHOWN WITH DRIVES AND
UPPER SHELF REMOVED
FOR CLARITY.



A0372-04A-IL

**Figure 4. MicroVAX/VAXserver 3100 Systems (Models 20 and 20e) and
InfoServer 100 (Models SEABB/BC-CX) (Sheet 2 of 3)**



A0372-04B-IL

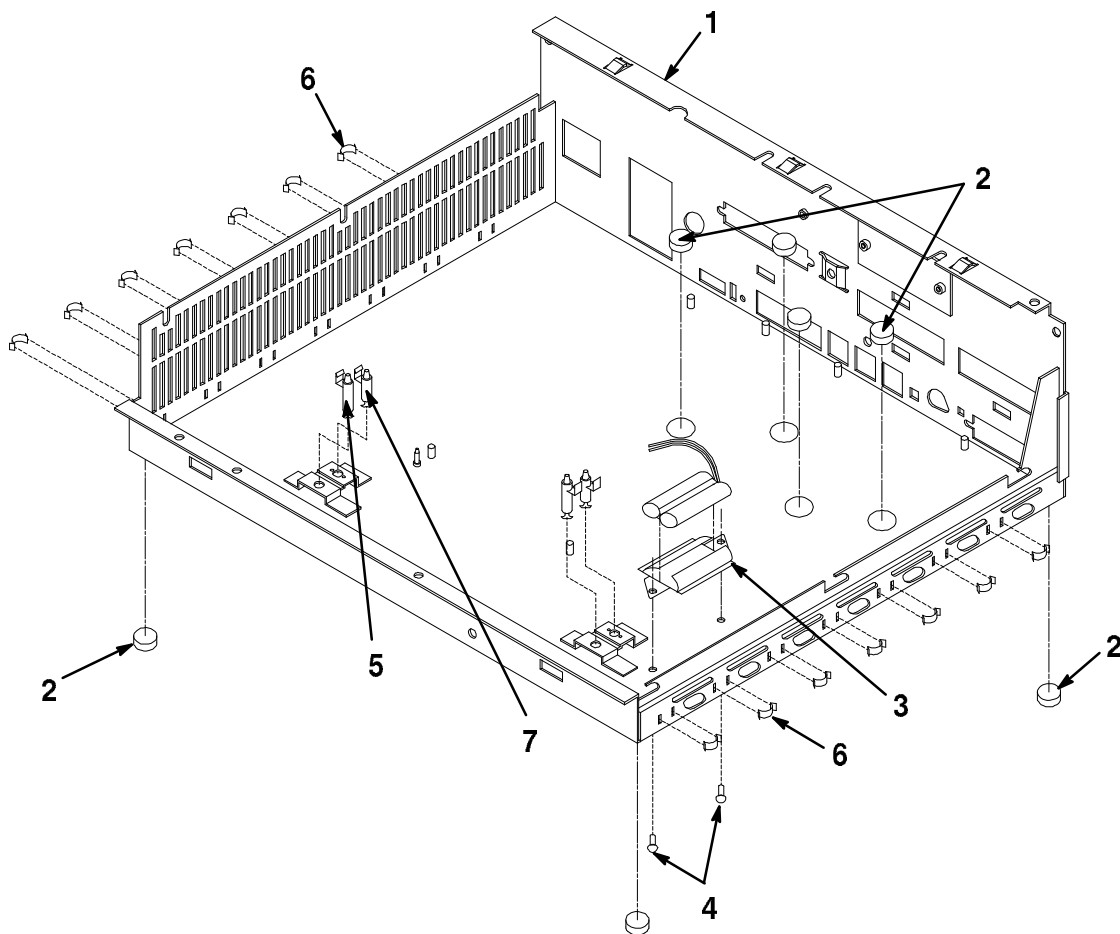
Figure 4. MicroVAX/VAXserver 3100 Systems (Models 20 and 20e) and InfoServer 100 (Models SEABB/BC-AX) (Sheet 3 of 3)

FIG.& ITEM NO.	DESCRIPTION	DEC PART NO.	L ECO CUT-IN 70-27099 00000	USED ON CODE	REF FIG NO.
4-	MicroVAX 3100/VAXserver 3100 SYSTEMS (MODELS 20 and 20e) and INFOSERVER 100 (MODELS SEABB/BC and SEABB/BC-AX)				
	Code A - Used on MicroVAX 3100 System Model 20	70-27099-01		A	
	Code B - Used on VAXserver 3100 System Model 20	70-27099-02		B	
	Code C - Used on InfoServer 100 System (added)	70-27099-03	00005	C	
	Code D - Used on MicroVAX 3100 System Model 20e (added)	70-27099-04	00007	D	
	Code E - Used on VAXserver 3100 System Model 20e (added)	70-27099-05	00007	E	
	Used On Codes Apply To This Figure Only				
1	*BASE ASSEMBLY	70-27094-01			5
2	*Power Supply, 120/240V 5.1V 13A +1	H7822-00			
	*Power Supply, 120/240V (added)	H7083-BA	00008	C	
3	*Module, CPU MicroVAX 3100 (90ns)	54-18856-01		A	
	*Module, CPU VAXserver 3100 (90ns)	54-18856-02		B	
	*Module Assembly, InfoServer 100 (added)	70-28103-01	00005	C	
	*Module, CPU MicroVAX 3100 (60ns) (added)	54-18856-04	00007	D	
	*Module, CPU VAXserver 3100 (60ns) (added)	54-18856-05	00007	E	
4	*Module Assembly, Distribution	54-18858-01		ABDE	
5	*Cover, Sync	74-38986-01			
6	*SHELF ASSEMBLY, LOWER DRIVE (Models 20 and 20e)	70-27093-01			7
	*Shelf Assembly, Lower Drive InfoServer 100 (deleted) (See Note 3)	70-28104-01	00008	C	
7	*Screw, Sems Phl Pan Hd No. 4-40 x 3/8	90-09643-00			
8	*Screw, Self-Tap Phl Pan Hd No. 4-20 x 1/4	90-09800-07			
9	*Shelf, Upper Drive	74-37702-01			
10	*COVER ASSEMBLY	70-26167-01			6
11	*Drive, RZ2x-x 3.5Inch Factory Installed	RZ2x-xx			
12	*Harness Assembly, Wire	17-02219-01			
13	*Clip, Wire Routing	12-21249-06			
14	*Battery, 3 Cell 3.75V .18MA Nicad	12-19245-00			
15	*Cable Assembly, 100 Cond Flat 28 AWG	17-02295-01		ABDE	
	*Cable Assembly, 50 Cond Flat	17-02909-01		C	
16	*Cable Assembly, 100 Cond Round 28 AWG	17-02462-01	00007	ABDE	
17	*Cable Assembly, 50 Cond Round, 30 AWG 50 Pin Connector - 50 Pin DC (See Note 3)	17-02297-01			
	*Cable Assembly, 50 Cond Round (added)	17-03209-01	00008	C	
18	*Screw, Sems Phl Pan Hd No. 6-32 x 5/16	90-09984-07			

FIG.& ITEM NO.	DESCRIPTION	DEC PART NO.	L ECO CUT-IN 70-27099 00000	USED ON CODE	REF FIG NO.
4-					
19	*Module, Memory 4MB w/Parity (54-19051-AA) (See Notes 1 and 2)	MS42-AB		ABDE	
	*Module, Memory 8MB w/Parity (54-19830-AA) (added) (See Notes 1 and 2)	MS42-KA		ABDE	
	*Module, Memory 12MB w/Parity (54-18287-BA) (See Notes 1 and 2)	MS42-BA		ABDE	
	*Module, Memory 16MB w/Parity (54-18324-AA) (See Notes 1 and 2)	MS42-CA		ABDE	
20	*Drive, RX23-AA Factory Installed (See Note 1)	RX23-EM			
	*Drive, RX23-E Field Installed (See Note 1)	RX23-EK			
21	*Drive, TZ30 Tape Factory Installed (See Note 1)	TZ30-EG		ABDE	
22	*Fastener, PC Board	12-21566-05		ABDE	
23	*Finger, Grounding (added)	12-26922-01	00008	C	
24	*Connector, SCSI Term 50 Position	12-30552-01			
25	*Cable Assembly, 4 Conductor Round	17-02464-01		ABDE	
26	*Medallion, MicroVAX 3100	74-37642-07		AD	
	*Medallion, VAXserver 3100	74-37642-08		BE	
	*Medallion, InfoServer 100 (added)	74-41950-01	00005	C	
27	*Connector, 25 DIN DSUB Male	H8575-A			
28	*Bezel, Insert	74-38027-01			
29	*BEZEL ASSEMBLY, REAR	70-27095-01			
30	**Bezel, Rear	74-38972-01			
31	**Screw, Captive Phi Pan Hd No. 6-32 x 5/8	12-30940-03			
32	*Cover, Synch/Asynch (added)	74-38974-01	00004		
33	*Cover, SCSI Exit (added)	74-38975-01	00004		
34	*Cover, Dual Synch (added)	74-38973-01	00004		
35	*Screw, Self-Tap Pan Hd No. 6 x 3/16 (added)	90-00062-69	00008	C	
36	*Module, 1st Sync RS232/V.24 + 8 Line Asynch (54-18905-01) (added) (See Note 1)	DSH32-BX	00007	ABDE	
37	*Cable Assembly , 1st Sync RS232/V.24 (See Note 1)	17-02294-01		ABDE	
38	*Module, 2nd Sync RS232/V.24 + 8 Line Asynch (54-18905-01) (added) (See Note 1)	DSH32-YX	00007	ABDE	
39	*Cable Assembly , 2nd Sync (See Note 1)	17-02298-01		ABDE	
40	*Shield, Plate (added)	74-43806-01	00008	C	
41	*Bead, Ferrite for Flat Cable (deleted)(See Note 3)	16-25105-11	00008	C	
42	*Cable Tie (deleted)(See Note 3)	90-09617-00	00008	C	
43	*Standoff, Male to Male (deleted)(See Note 3)	90-10870-01	00008	C	
44	*Terminator, SCSI 50 Position (added)	12-33816-01	00005	C	
45	*Module, Controller for CD ROM (See Note 1)	RRD40-AA			
	NOTE 1: Items 19, 20, 21, 38, 39 and 45 are optional. Shown in Figure 4 and listed here for reference only.				

FIG.& ITEM NO.	DESCRIPTION	DEC PART NO.	L ECO CUT-IN 70-27099 00000	USED ON CODE	REF FIG NO.
4-	<p>NOTE 2: Item 19 is dependant on customer configuration.</p> <p>NOTE 3: Items used on the earlier versions of InfoServer 100 (Models SEABB/BC-AX)</p> <p>CONNECTORS/TERMINATOR (Not Shown)</p> <p>*Connector, D-Sub 25 Pin Diagnostic Loopback 12-15336-08</p> <p>*Connector, DEC Modified Modular Jack H3103-00</p> <p>Loopback (H8220)</p> <p>*Connector, 36 Pin H3100 Asynch Loopback H3101-00</p> <p>*Connector, D-Sub 50 Position Synchronous 12-25852-01</p> <p>CABLE (Not Shown)</p> <p>*Cable Assembly, Oval Data 25' 6 Cond BC16E-25</p> <p>KITS (Not Shown)</p> <p>*KIT, THICK ThinWire ETHERNET 70-26209-01</p> <p>**Connector, Coac BNC 50 Ohms 12-26318-01</p> <p>**Tee, Coax BNC 12-25869-01</p> <p>**Connector, 15 Pin Ethernet Loopback 12-22196-01</p> <p>*KIT, USA COUNTRY FC310-AA</p> <p>**Cord, Power 75 BN19P-1K</p> <p>**Documentation, English User EK-372AA-12</p> <p>LABELS (Not Shown)</p> <p>*Label, "Regulatory, USA" Model 20 36-30382-05</p> <p>*Label, "Regulatory, UK" Model 20 36-30382-06</p> <p>*Label, "Regulatory, Canada" Model 20 36-30382-18</p> <p>*Label, "PTT MicroVAX 3100" 36-31381-01</p> <p>*Label, "PTT VAXserver 3100" (added) 36-31381-02</p> <p>*Label, "SCSI" 36-30704-02</p> <p>*Label, "Diagnostic VS42A" 36-30489-01</p> <p>*Label, "Async Connector" 36-31382-01</p> <p>*Label, "Product ID" 36-31380-01</p> <p>*Label, "Attention Preinstalled Software" (added) 36-28979-01</p> <p>*Label, "Postcard FTZ Series BA42B" (added) 36-30422-10</p>			ABDE	
			00002	AD BE	
			00003	ABDE	
			00002		

FIG.& ITEM NO.	DESCRIPTION	DEC PART NO. ^A	ECO CUT-IN 70-27094 00000	USED ON CODE	REF FIG NO.
5-	BASE ASSEMBLY	70-27094-01			4
1	*Chassis, Base	74-38970-01			
2	*Bumper, Self-Adh	90-10738-01			
3	*Holder, Battery Pack (See Note)	74-33477-01			
4	*Rivet, Blind Binder	90-10413-02			
5	*Standoff, Nylon	12-30106-03			
6	*Finger, Grounding	12-26922-01			
7	*Standoff, Nylon	12-19857-05			
	Note: Battery shown is part of Figure 4.				

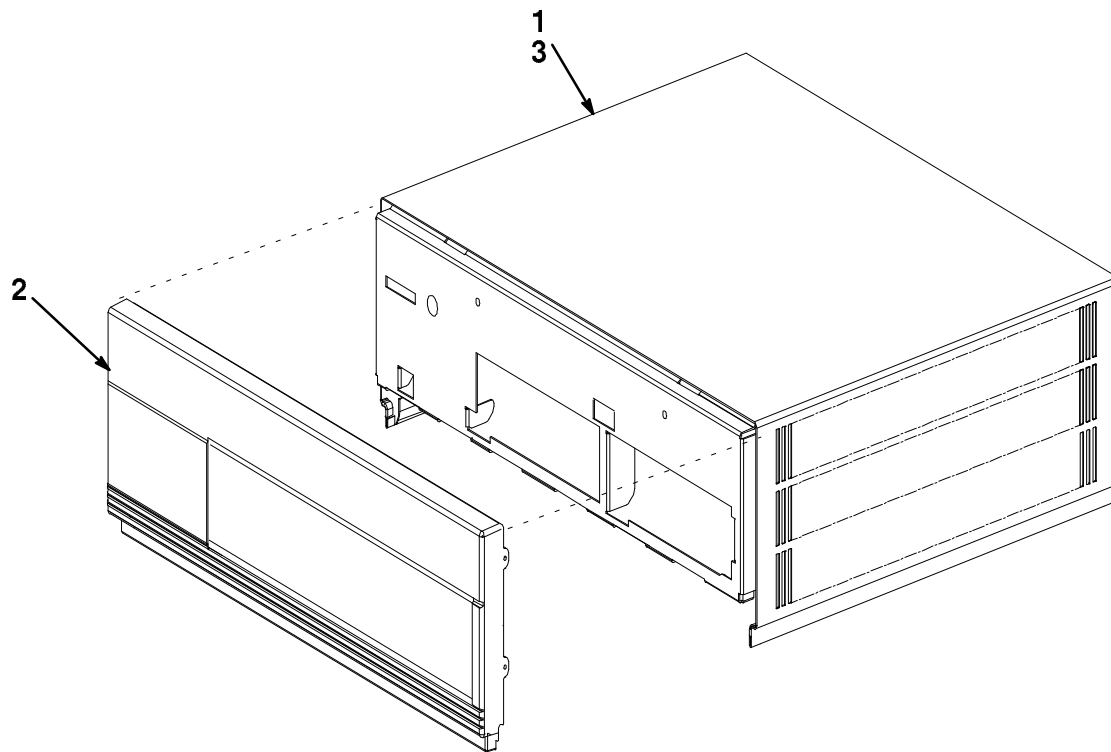


A0372-05-IL

Figure 5. Base Assembly

THIS PAGE INTENTIONALLY LEFT BLANK

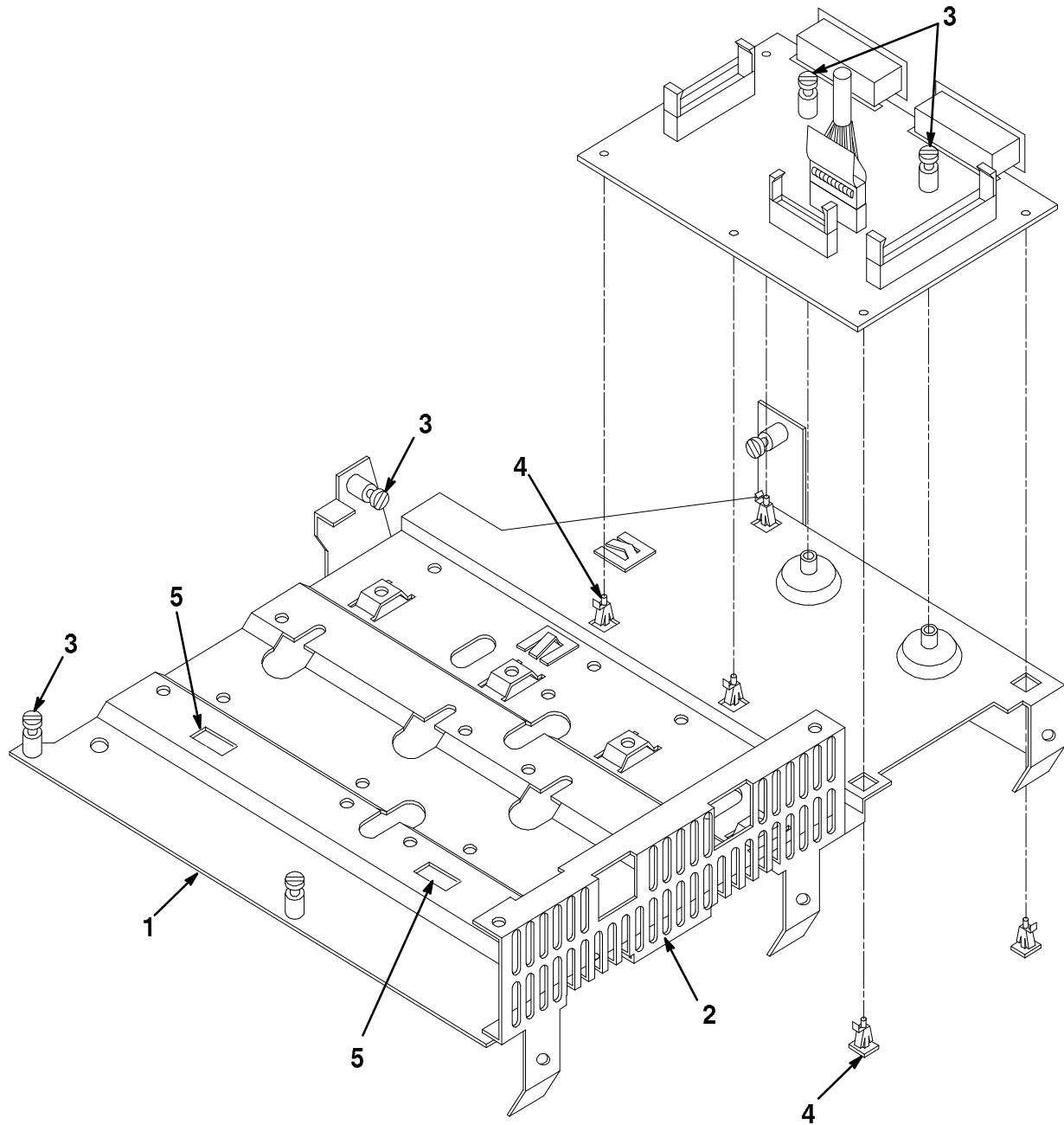
FIG.& ITEM NO.	DESCRIPTION	DEC PART NO. ^B	ECO CUT-IN 70-26167 00000	USED ON CODE	REF FIG NO.
6-	COVER ASSEMBLY	70-26167-01	00001		4
1	*Weldment, Cover	70-26169-01			
2	*Bezel Assembly, Front	70-26168-01			
3	*Screw, Phl Flat Hd No. 4-20 x 3/16	90-10411-01			



A0372-06-IL

Figure 6. Cover Assembly

THIS PAGE INTENTIONALLY LEFT BLANK



A0372-07-IL

Figure 7. Shelf Assembly, Lower Drive (Models 20 and 20e)

FIG.& ITEM NO.	DESCRIPTION	DEC PART NO.	ECO CUT-IN 70-27093 00000	USED ON CODE	REF FIG NO.
7-	SHELF ASSEMBLY, LOWER DRIVE (MODELS 20 and 20e)	70-27093-01	00008		4
1	*Shelf, Lower Drive	74-38985-01			
2	*Support	74-38988-01			
3	*Screw, Captive Phl Hd No. 6-32	12-14428-06			
4	*Standoff, Self Clinching No. 6-32 x 7/16	90-10014-00			
5	*Finger, Grounding	12-26922-01			

PART NUMBER/DESCRIPTION INDEX

INDEX BY DEC PART NUMBER
MicroVAX 3100/VAXserver 3100/InfoServer 100 SYSTEMS

PART NO.	DESCRIPTION	FIG NO.	ITEM NO.
12-14428-06	Screw, Captive Phl Hd No. 6-32	7	3
12-15336-08	Connector, D-Sub 25 Pin Diagnostic Loopback	4	Not Shown
12-19245-00	Battery, 3 Cell 3.75 .18MA Nicad	4	14
12-19245-00	Battery, 3 Cell 3.75 .18MA Nicad	1	2
12-19857-05	Standoff, Nylon	3	5
12-19857-05	Standoff, Nylon	5	7
12-21249-06	Clip, Wire Routing	4	13
12-21249-06	Clip, Wire Routing	1	13
12-21566-05	Fastener, PC Board	1	11
12-21566-05	Fastener, PC Board	4	22
12-22196-01	Connector, 15 Pin Ethernet Loopback	4	Not Shown
12-22196-01	Connector, 15 Pin Ethernet Loopback	1	Not Shown
12-25852-01	Connector, D-Sub 50 Position Synchronous	4	Not Shown
12-25869-01	Tee, Coax BNC	1	Not Shown
12-25869-01	Tee, Coax BNC	4	Not Shown
12-26318-01	Connector, Coac BNC 50 Ohms	4	Not Shown
12-26318-01	Connector, Coax BNC 50 Ohms	1	Not Shown
12-26922-01	Finger, Grounding	3	6
12-26922-01	Finger, Grounding (added)	4	23
12-26922-01	Finger, Grounding	5	6
12-26922-01	Finger, Grounding	7	5
12-30106-03	Standoff, Nylon	3	7
12-30106-03	Standoff, Nylon	5	5
12-30552-01	Connector, SCSI Term 50 Position	1	22
12-30552-01	Connector, SCSI Term 50 Position	4	24
12-30940-03	Screw, Captive Phl Pan Hd No. 6-32 x 5/8	1	28
12-30940-03	Screw, Captive Phl Pan Hd No. 6-32 x 5/8	4	31
12-33816-01	Terminator, SCSI 50 Position (added)	4	Not Shown
16-25105-11	Bead, Ferrite for Flat Cable (deleted)	4	41
17-02219-01	Harness Assembly, Wire	4	12
17-02294-01	Cable Assembly , 1st Sync RS232/V.24	4	37
17-02295-01	Cable Assembly, 100 Cond Flat 28 AWG	4	15
17-02295-01	Cable Assembly, 100 Cond Flat 28 AWG	1	Not Shown
17-02297-01	Cable Assembly, 50 Cond Round, 30 AWG 50 Pin Connector - 50 Pin DC	4	17
17-02298-01	Cable Assembly , 2nd Sync	4	39
17-02462-01	Cable Assembly, 100 Cond Round 28 AWG	1	Not Shown
17-02462-01	Cable Assembly, 100 Cond Round 28 AWG	4	16
17-02463-01	Cable Assembly, 50 Cond Round	1	Not Shown
17-02566-01	Cable Assembly, Internal Power	1	Not Shown
17-02909-01	Cable Assembly, 50 Cond Flat (added)	4	15
17-03209-01	Cable Assembly, 50 Cond Round (added)	4	17
17-02464-01	Cable Assembly, 4 Cond Round	4	25
36-28979-01	Label, "Attention Preinstalled Software"	1	Not Shown
36-28979-01	Label, "Attention Preinstalled Software" (added)	4	Not Shown
36-30382-05	Label, "Regulatory, USA" Model 20	4	Not Shown
36-30382-06	Label, "Regulatory, UK" Model 20	4	Not Shown
36-30382-13	Label, "Regulatory BA42, USA Small Box"	1	9
36-30382-14	Label, "Regulatory BA42, UK Small Box"	1	9
36-30382-17	Label, "Regulatory BA42, Canada Small Box" (added)	1	9

INDEX BY DEC PART NUMBER
MicroVAX 3100/VAXserver 3100/InfoServer 100 SYSTEMS

PART NO.	DESCRIPTION	FIG NO.	ITEM NO.
36-30382-18	Label, "Regulatory, Canada" Model 20	4	Not Shown
36-30422-05	Label, "Postcard FTZ, Series BA42A" (added)	1	Not Shown
36-30422-10	Label, "Postcard FTZ Series BA42B" (added)	4	Not Shown
36-30489-01	Label, "Diagnostic VS42A"	1	25
36-30489-01	Label, "Diagnostic VS42A"	4	Not Shown
36-30704-02	Label, "SCSI"	1	5
36-30704-02	Label, "SCSI"	4	Not Shown
36-31380-01	Label, "Product ID"	4	Not Shown
36-31381-01	Label, "PTT MicroVAX 3100"	4	Not Shown
36-31381-02	Label, "PTT VAXserver 3100" (added)	4	Not Shown
36-31382-01	Label, "Async Connector"	4	Not Shown
36-31382-01	Label, "Async Connector"	1	7
36-31382-02	Label, "Teamate II Small Box Sync Co."	1	8
36-31684-01	Label, "Small Box PTT MicroVAX 3100"	1	23
36-31684-02	Label, "Small Box PTT VAXserver 3100"	1	23
36-31685-01	Label, "Small Box Prod ID"	1	24
54-18856-01	Module, CPU MicroVAX 3100 (90ns)	4	3
54-18856-01	Module, CPU MicroVAX 3100 (90ns)	1	15
54-18856-02	Module, CPU VAXserver 3100 (90ns)	1	15
54-18856-02	Module, CPU VAXserver 3100 (90ns)	4	3
54-18856-04	Module, CPU MicroVAX 3100 (60ns) (added)	1	15
54-18856-04	Module, CPU MicroVAX 3100 (60ns) (added)	4	3
54-18856-05	Module, CPU VAXserver 3100 (60ns) (added)	4	3
54-18856-05	Module, CPU VAXserver 3100 (60ns) (added)	1	15
54-18858-01	Module Assembly, Distribution	4	4
54-18858-01	Module Assembly, Distribution	1	12
70-25726-01	ENCLOSURE ASSEMBLY, TOP	1	19
70-25726-01	ENCLOSURE ASSEMBLY, TOP	2	N/A
70-25786-01	Weldment, Top Enclosure	2	1
70-25797-01	Bezel Assembly, Front	2	2
70-26167-01	COVER ASSEMBLY	4	10
70-26167-01	COVER ASSEMBLY	6	N/A
70-26168-01	Bezel Assembly, Front	6	2
70-26169-01	Weldment, Cover	6	1
70-26209-01	KIT, THICK ThinWire ETHERNET	4	Not Shown
70-26209-01	KIT, THICK ThinWire ETHERNET	1	Not Shown
70-27093-01	SHELF ASSEMBLY, LOWER DRIVE (Models 20 and 20e)	4	6
70-27093-01	SHELF ASSEMBLY, LOWER DRIVE (Models 20 and 20e)	7	N/A
70-27094-01	BASE ASSEMBLY	4	1
70-27094-01	BASE ASSEMBLY	5	N/A
70-27095-01	BEZEL ASSEMBLY, REAR	4	29
70-27096-01	ENCLOSURE ASSEMBLY, BOTTOM	3	N/A
70-27096-01	ENCLOSURE ASSEMBLY, BOTTOM	1	1
70-27097-01	BEZEL ASSEMBLY, REAR	1	26
70-27099-01	MicroVAX 3100 System Model 20	4	N/A
70-27099-02	VAXserver 3100 System Model 20	4	N/A
70-27099-03	InfoServer 100 System (added)	4	N/A
70-27099-04	MicroVAX 3100 System Model 20e (added)	4	N/A
70-27099-05	VAXserver 3100 System Model 20e (added)	4	N/A
70-27100-01	MicroVAX 3100 System	1	N/A

INDEX BY DEC PART NUMBER
MicroVAX 3100/VAXserver 3100/InfoServer 100 SYSTEMS

PART NO.	DESCRIPTION	FIG NO.	ITEM NO.
70-27100-02	VAXserver 3100 System	1	N/A
70-27100-03	MicroVAX 3100 System Model 10e (added)	1	N/A
70-27100-04	VAXserver 3100 System Model 10e (added)	1	N/A
70-28103-01	Module Assembly, InfoServer 100 (added)	4	3
70-28104-01	Shelf Assembly, Lower Drive (InfoServer 100) (deleted)	4	6
74-33477-01	Holder, Battery Pack	5	3
74-33477-01	Holder, Battery Pack	3	3
74-37499-01	Insert, Blank Bezel	1	21
74-37501-01	Insert, TZ30 Bezel	1	21
74-37642-07	Medallion, MicroVAX 3100	4	26
74-37642-07	Medallion, MicroVAX 3100	1	20
74-37642-08	Medallion, VAXServer 3100	1	20
74-37642-08	Medallion, VAXserver 3100	4	26
74-37702-01	Shelf, Upper Drive	4	9
74-38027-01	Bezel, Insert	4	28
74-38970-01	Chassis, Base	5	1
74-38972-01	Bezel, Rear	4	30
74-38973-01	Cover, Dual Synch (added)	4	34
74-38974-01	Cover, Synch/Asynch (added)	4	32
74-38974-01	Cover, Synch/Asynch (added)	1	29
74-38975-01	Cover, SCSI Exit (added)	1	30
74-38975-01	Cover, SCSI Exit (added)	4	33
74-38985-01	Shelf, Lower Drive	7	1
74-38986-01	Cover, Sync	4	5
74-38988-01	Support	7	2
74-39033-01	Bezel, Rear	1	27
74-39034-01	Cover, Single Synch (added)	1	31
74-39290-01	Enclosure, Bottom	3	1
74-39291-01	Shelf, Drive	1	10
74-39959-01	Insert, RX23 Bezel	1	21
74-41950-01	Medallion, InfoServer 100 (added)	4	26
74-43806-01	Shield, Plate (added)	4	40
90-00062-69	Screw, Self-Tap Pan Hd No. 6 x 3/16 (added)	4	35
90-08032-01	Screw, Machine Phl Pan Hd No. 4-40 x 3/16	2	3
90-09617-00	Cable Tie, (deleted)	4	42
90-09643-00	Screw, Sems Phl Pan Hd No. 4-40 x 3/8	1	6
90-09643-00	Screw, Sems Phl Pan Hd No. 4-40 x 3/8	4	7
90-09800-07	Screw, Self-Tap Phl Pan Hd No. 4-40 x 1/4	1	4
90-09800-07	Screw, Self-Tap Phl Pan Hd No. 4-20 x 1/4	4	8
90-09984-07	Screw, Sems Phl Pan Hd No 6-32 x 5/16	1	14
90-09984-07	Screw, Sems Phl Pan Hd No. 6-32 x 5/16	4	18
90-10014-00	Standoff, Self Clinching No. 6-32 x 7/16	7	4
90-10411-01	Screw, Phl Flat Hd No. 4-20 x 3/16	6	3
90-10413-02	Rivet, Blind Binder	5	4
90-10413-02	Rivet, Blind Binder	3	4
90-10738-01	Bumper, Self-Adh	3	2
90-10738-01	Bumper, Self-Adh	5	2
90-10870-01	Standoff, Male to Male (deleted)	4	43
BC16E-25	Cable Assembly, Oval Data 25' 6 Cond	4	Not Shown
BC16E-25	Cable Assembly, Oval Data 25' 6 Cond	1	Not Shown
BN19P-1K	Cord, Power 75	4	Not Shown

INDEX BY DEC PART NUMBER
MicroVAX 3100/VAXserver 3100/InfoServer 100 SYSTEMS

PART NO.	DESCRIPTION	FIG NO.	ITEM NO.
DSH32-BA	Module, 1st Sync RS232/V.24 + 8 Line Asynch (54-18905-01)	1	18
DSH32-BX	Module, 1st Sync RS232/V.24 + 8 Line Asynch (54-18905-01) (added)	4	36
DSH32-YX	Module, 2nd Sync RS232/V.24 + 8 Line Asynch (54-18905-01) (added)	4	38
EK-372AA-12	Documentation, English User	4	Not Shown
FC310-AA	KIT, USA COUNTRY	4	Not Shown
H3101-00	Connector, 36 Pin H3100 Asynch Loopback	4	Not Shown
H3103-00	Connector, DEC Modified Modular Jack Loopback (H8220)	4	Not Shown
H7083-BA	Power Supply, 120/240V (added)	4	2
H7821-00	Power Supply, 122W Auto Select 100V/120V 220V/240V	1	3
H7822-00	Power Supply, 120/240V 5.1V 13A +1	4	2
H8575-A	Connector, 25 DIN DSUB Male	1	17
H8575-A	Connector, 25 DIN DSUB Male	4	27
MS42-AB	Module, Memory 4MB w/Parity (54-19051-AA)	4	19
MS42-AB	Module, Memory 4MB w/Parity (54-19051-AA)	1	16
MS42-BA	Module, Memory 12MB w/Parity (54-18287-BA)	4	19
MS42-BA	Module, Memory 12MB w/Parity (54-18287-BA)	1	16
MS42-CA	Module, Memory 16MB w/Parity (54-18324-AA)	1	16
MS42-CA	Module, Memory 16MB w/Parity (54-18324-AA)	4	19
MS42-KA	Module, Memory 8MB w/Parity (54-19830-AA) (added)	4	19
MS42-KA	Module, Memory 8MB w/Parity (54-19830-AA)	1	16
N/A	1MicroVAX 3100/VAXserver 3100 SYSTEMS (MODELS 20 and 20e)	4	N/A
N/A	MicroVAX 3100/VAXserver 3100 SYSTEMS (MODELS 10 and 10e)	1	N/A
RX23-EK	Drive, RX23-E Field Installed	4	20
RX23-EM	Drive, RX23-AA Factory Installed	4	20
RX23-EM	Drive, RX23-AA Factory Installed	1	Not Shown
RZ2X-XX	Drive, RZ2x-x SCSI 3.5Inch Factory Installed	1	Not Shown
RZ2X-XX	Drive, RZ2x-x SCSI 3.5Inch Factory Installed	4	11
TZ30-EG	Drive, TZ30 Tape Factory Installed	4	21
TZ30-EG	Drive, TZ30 Tape Factory Installed	1	Not Shown

NOTE

When the description includes "added" or "deleted, ALWAYS refer to the figure parts list for the latest part description.

INDEX BY DEC PART DESCRIPTION
MicroVAX 3100/VAXserver 3100/InfoServer 100 SYSTEMS

DESCRIPTION	DEC PART NO.	FIG. NO.	ITEM NO.
BASE ASSEMBLY	70-27094-01	5	N/A
BASE ASSEMBLY	70-27094-01	4	1
Battery, 3 Cell 3.75 .18MA Nicad	12-19245-00	1	2
Battery, 3 Cell 3.75V Nicad	12-19245-00	4	14
Bezel Assembly, Front	70-25797-01	2	2
Bezel Assembly, Front	70-26168-01	6	2
Bead, Ferrite for Flat Cable (deleted)	16-25105-11	4	41
BEZEL ASSEMBLY, REAR	70-27097-01	1	26
BEZEL ASSEMBLY, REAR	70-27095-01	4	29
Bezel, Insert	74-38027-01	4	28
Bezel, Rear	74-39033-01	1	27
Bezel, Rear	74-38972-01	4	30
Bumper, Self-Adh	90-10738-01	5	2
Bumper, Self-Adh	90-10738-01	3	2
Cable Assembly , 1st Sync RS232/V.24	17-02294-01	4	37
Cable Assembly , 2nd Sync	17-02298-01	4	39
Cable Assembly, 50 Cond Round (added)	17-03209-01	4	17
Cable Assembly, 100 Cond Flat 28 AWG	17-02295-01	1	Not Shown
Cable Assembly, 100 Cond Flat 28 AWG	17-02295-01	4	15
Cable Assembly, 100 Cond Round 28 AWG	17-02462-01	1	Not Shown
Cable Assembly, 100 Cond Round 28 AWG	17-02462-01	4	16
Cable Assembly, 4 Cond Round	17-02464-01	4	25
Cable Assembly, 50 Cond Round	17-02463-01	1	Not Shown
Cable Assembly, 50 Cond Round, 30 AWG 50 Pin Connector - 50 Pin DC	17-02297-01	4	17
Cable Assembly, 50 Cond Flat	17-02909-01	4	15
Cable Assembly, Internal Power	17-02566-01	1	Not Shown
Cable Assembly, Oval Data 25' 6 Cond	BC16E-25	1	Not Shown
Cable Assembly, Oval Data 25' 6 Cond	BC16E-25	4	Not Shown
Cable Tie, (deleted)	74-38970-01	4	42
Chassis, Base	74-38970-01	5	1
Clip, Wire Routing	12-21249-06	4	13
Clip, Wire Routing	12-21249-06	1	13
Connector, 15 Pin Ethernet Loopback	12-22196-01	4	Not Shown
Connector, 25 DIN DSUB Male	H8575-A	1	17
Connector, 25 DIN DSUB Male	H8575-A	4	27
Connector, 36 Pin H3100 Asynch Loopback	H3101-00	4	Not Shown
Connector, Coac BNC 50 Ohms	12-26318-01	4	Not Shown
Connector, Coax BNC 50 Ohms	12-26318-01	1	Not Shown
Connector, 15 Pin Ethernet Loopback	12-22196-01	1	Not Shown
Connector, D-Sub 25 Pin Diagnostic Loopback	12-15336-08	4	Not Shown
Connector, D-Sub 50 Position Synchronous	12-25852-01	4	Not Shown
Connector, DEC Modified Modular Jack Loopback (H8220)	H3103-00	4	Not Shown
Connector, SCSI Term 50 Position	12-30552-01	4	24
Connector, SCSI Term 50 Position	12-30552-01	1	22
Cord, Power 75	BN19P-1K	4	Not Shown
COVER ASSEMBLY	70-26167-01	4	10
COVER ASSEMBLY	70-26167-01	6	N/A
Cover, Dual Synch (added)	74-38973-01	4	34
Cover, SCSI Exit (added)	74-38975-01	1	30
Cover, SCSI Exit (added)	74-38975-01	4	33

INDEX BY DEC PART DESCRIPTION
MicroVAX 3100/VAXserver 3100/InfoServer 100 SYSTEMS

DESCRIPTION	DEC PART NO.	FIG. NO.	ITEM NO.
Cover, Single Synch (added)	74-39034-01	1	31
Cover, Sync	74-38986-01	4	5
Cover, Synch/Asynch (added)	74-38974-01	1	29
Cover, Synch/Asynch (added)	74-38974-01	4	32
Documentation, English User	EK-372AA-12	4	Not Shown
Drive, RX23-AA Factory Installed	RX23-EM	1	Not Shown
Drive, RX23-AA Factory Installed	RX23-EM	4	20
Drive, RZ2x-x 3.5Inch Factory Installed	RZ2x-xx	1	Not Shown
Drive, RZ2x-x 3.5Inch Factory Installed	RZ2x-xx	4	11
Drive, TZ30 Tape Factory Installed	TZ30-EG	1	Not Shown
Drive, TZ30 Tape Factory Installed	TZ30-EG	4	21
Drive, RX23-E Field Installed	RX23-EK	4	20
ENCLOSURE ASSEMBLY, BOTTOM	70-27096-01	3	N/A
ENCLOSURE ASSEMBLY, BOTTOM	70-27096-01	1	1
ENCLOSURE ASSEMBLY, TOP	70-25726-01	2	N/A
ENCLOSURE ASSEMBLY, TOP	70-25726-01	1	19
Enclosure, Bottom	74-39290-01	3	1
Fastener, PC Board	12-21566-05	4	22
Fastener, PC Board	12-21566-05	1	11
Finger, Grounding	12-26922-01	5	6
Finger, Grounding	12-26922-01	3	6
Finger, Grounding	12-26922-01	7	5
Finger, Grounding (added)	12-26922-01	4	23
Harness Assembly, Wire	17-02219-01	4	12
Holder, Battery Pack	74-33477-01	5	3
Holder, Battery Pack	74-33477-01	3	3
InfoServer 100 System (added)	70-27099-03	4	N/A
Insert, Blank Bezel	74-37499-01	1	21
Insert, RX23 Bezel	74-39959-01	1	21
Insert, TZ30 Bezel	74-37501-01	1	21
KIT, THICK ThinWire ETHERNET	70-26209-01	4	Not Shown
KIT, THICK ThinWire ETHERNET	70-26209-01	1	Not Shown
KIT, USA COUNTRY	FC310-AA	4	Not Shown
Label, "Async Connector"	36-31382-01	1	7
Label, "Async Connector"	36-31382-01	4	Not Shown
Label, "Attention Preinstalled Software"	36-28979-01	1	Not Shown
Label, "Attention Preinstalled Software" (added)	36-28979-01	4	Not Shown
Label, "Diagnostic VS42A"	36-30489-01	1	25
Label, "Diagnostic VS42A"	36-30489-01	4	Not Shown
Label, "Postcard FTZ Series BA42B" (added)	36-30422-10	4	Not Shown
Label, "Postcard FTZ Series BA42A" (added)	36-30422-05	1	Not Shown
Label, "Product ID"	36-31380-01	4	Not Shown
Label, "PTT MicroVAX 3100"	36-31381-01	4	Not Shown
Label, "PTT VAXserver 3100" (added)	36-31381-02	4	Not Shown
Label, "Regulatory BA42, Canada Small Box" (added)	36-30382-17	1	9
Label, "Regulatory BA42, UK Small Box"	36-30382-14	1	9
Label, "Regulatory BA42, USA Small Box"	36-30382-13	1	9
Label, "Regulatory, Canada" Model 20	36-30382-18	4	Not Shown
Label, "Regulatory, UK" Model 20	36-30382-06	4	Not Shown

INDEX BY DEC PART DESCRIPTION
MicroVAX 3100/VAXserver 3100/InfoServer 100 SYSTEMS

DESCRIPTION	DEC PART NO.	FIG. NO.	ITEM NO.
Label, "Regulatory, USA" Model 20	36-30382-05	4	Not Shown
Label, "SCSI"	36-30704-02	4	Not Shown
Label, "SCSI"	36-30704-02	1	5
Label, "Small Box Prod ID"	36-31685-01	1	24
Label, "Small Box PTT MicroVAX 3100"	36-31684-01	1	23
Label, "Small Box PTT VAXserver 3100"	36-31684-02	1	23
Label, "Teamate II Small Box Sync Co."	36-31382-02	1	8
Medallion, InfoServer 100 (added)	74-41950-01	4	26
Medallion, MicroVAX 3100	74-37642-07	4	26
Medallion, MicroVAX 3100	74-37642-07	1	20
Medallion, VAXServer 3100	74-37642-08	1	20
Medallion, VAXserver 3100	74-37642-08	4	26
MicroVAX 3100 System	70-27100-01	1	N/A
MicroVAX 3100 System Model 10e (added)	70-27100-03	1	N/A
MicroVAX 3100 System Model 20	70-27099-01	4	N/A
MicroVAX 3100 System Model 20e (added)	70-27099-04	4	N/A
MicroVAX 3100/VAXserver 3100 SYSTEMS (MODELS 10 and 10e)	N/A	1	N/A
MicroVAX 3100/VAXserver 3100 SYSTEMS (MODELS 20 and 20e)	N/A	4	N/A
Module Assembly, Distribution	54-18858-01	4	4
Module Assembly, Distribution	54-18858-01	1	12
Module Assembly, InfoServer 100 (added)	70-28103-01	4	3
Module, 1 Sync RS232/V.24 + 8 Line Asynch (54-18905-01)	DSH32-BA	1	18
Module, 1st Sync RS232/V.24 + 8 Line Asynch (54-18905-01) (added)	DSH32-BX	4	36
Module, 2nd Sync RS232/V.24 + 8 Line Asynch (54-18905-01) (added)	DSH32-YX	4	38
Module, Controller for CD ROM	RRD40-AA	4	45
Module, CPU MicroVAX 3100 (60ns) (added)	54-18856-04	1	15
Module, CPU MicroVAX 3100 (60ns) (added)	54-18856-04	4	3
Module, CPU MicroVAX 3100 (90ns)	54-18856-01	1	15
Module, CPU MicroVAX 3100 (90ns)	54-18856-01	4	3
Module, CPU VAXserver 3100 (60ns) (added)	54-18856-05	1	15
Module, CPU VAXserver 3100 (90ns)	54-18856-02	4	3
Module, CPU VAXserver 3100 (60ns) (added)	54-18856-05	4	3
Module, CPU VAXserver 3100 (90ns)	54-18856-02	1	15
Module, Memory 12MB w/Parity (54-18287-BA)	MS42-BA	1	16
Module, Memory 12MB w/Parity (54-18287-BA)	MS42-BA	4	19
Module, Memory 16MB w/Parity (54-18324-AA)	MS42-CA	1	16
Module, Memory 16MB w/Parity (54-18324-AA)	MS42-CA	4	19
Module, Memory 4MB w/Parity (54-19051-AA)	MS42-AB	1	16
Module, Memory 4MB w/Parity (54-19051-AA)	MS42-AB	4	19
Module, Memory 8MB w/Parity (54-19830-AA)	MS42-KA	1	16
Module, Memory 8MB w/Parity (54-19830-AA) (added)	MS42-KA	4	19
Power Supply, 120/240V 5.1V 13A +1	H7822-00	4	2
Power Supply, 120/240V (added)	H7083-BA	4	2
Power Supply, 122W Auto Select 100V/120V 220V/240V	H7821-00	1	3
Rivet, Blind Binder	90-10413-02	3	4
Rivet, Blind Binder	90-10413-02	5	4

INDEX BY DEC PART DESCRIPTION
MicroVAX 3100/VAXserver 3100/InfoServer 100 SYSTEMS

DESCRIPTION	DEC PART NO.	FIG. NO.	ITEM NO.
Screw, Captive Phl Pan Hd No. 6-32 x 5/8	12-30940-03	4	31
Screw, Captive Phl Hd No. 6-32	12-14428-06	7	3
Screw, Captive Phl Pan Hd No. 6-32 x 5/8	12-30940-03	1	28
Screw, Machine Phl Pan Hd No. 4-40 x 3/16	90-08032-01	2	3
Screw, Phl Flat Hd No. 4-20 x 3/16	90-10411-01	6	3
Screw, Self-Tap Pan Hd No. 6 x 3/16 (added)	90-00062-69	4	35
Screw, Self-Tap Phl Pan Hd No. 4-20 x 1/4	90-09800-07	4	8
Screw, Self-Tap Phl Pan Hd No. 4-40 x 1/4	90-09800-07	1	4
Screw, Sems Phl Pan Hd No 6-32 x 5/16	90-09984-07	1	14
Screw, Sems Phl Pan Hd No. 4-40 x 3/8	90-09643-00	1	6
Screw, Sems Phl Pan Hd No. 4-40 x 3/8	90-09643-00	4	7
Screw, Sems Phl Pan Hd No. 6-32 x 5/16	90-09984-07	4	18
SHELF ASSEMBLY, LOWER DRIVE (Models 20 and 20e)	70-27093-01	4	6
SHELF ASSEMBLY, LOWER DRIVE (Models 20 and 20e)	70-27093-01	7	N/A
Shelf, Drive	74-39291-01	1	10
Shelf, Lower Drive	74-38985-01	7	1
Shelf, Upper Drive	74-37702-01	4	9
Shield, Plate (added)	74-43806-01	4	40
Standoff, Male to Male (deleted)	90-10870-01	4	43
Standoff, Nylon	12-19857-05	3	5
Standoff, Nylon	12-19857-05	5	7
Standoff, Nylon	12-30106-03	3	7
Standoff, Nylon	12-30106-03	5	5
Standoff, Self Clinching No. 6-32 x 7/16	90-10014-00	7	4
Support	74-38988-01	7	2
Tee, Coax BNC	12-25869-01	1	Not Shown
Tee, Coax BNC	12-25869-01	4	Not Shown
Terminator, SCSI 50 Position (added)	12-33816-01	4	44
VAXserver 3100 System	70-27100-02	1	N/A
VAXserver 3100 System Model 10e (added)	70-27100-04	1	N/A
VAXserver 3100 System Model 20	70-27099-02	4	N/A
VAXserver 3100 System Model 20e (added)	70-27099-05	4	N/A
Weldment, Cover	70-26169-01	6	1
Weldment, Top Enclosure	70-25786-01	2	1

NOTE

When the description includes "added" or "deleted", ALWAYS refer to the figure parts list for the latest part description.

READER'S COMMENTS

MicroVAX 3100/VAXserver 3100/InfoServer 100 SYSTEMS
Illustrated Parts Breakdown
EK-A0372-IP-003

1. How did you use this manual? (Circle your response.)

- (a) Installation (c) Maintenance (e) Training
(b) Operation/Use (d) Programming (f) Other (Please specify) _____

2. Did the manual meet your needs? Yes ☐ No ☐ Why? _____

3. Please rate the manual on the following categories. (Circle your response.)

	Excellent	Good	Fair	Poor	Unacceptable
Accuracy	5	4	3	2	1
Clarity	5	4	3	2	1
Completeness	5	4	3	2	1
Illustrations, examples	5	4	3	2	1
Overall ease of use	5	4	3	2	1
Table of Content, Index	5	4	3	2	1

4. What things did you like *most* about this manual? _____

5. What things did you like *least* about this manual? _____

6. Please list and describe any errors you found in the manual.

Page	Description/Location of Error
_____	_____
_____	_____
_____	_____
_____	_____

7. Which of the following most clearly describes your job ? (Circle your response.)

- (a) Administrative Support (e) System Manager (i) Education/Trainer
(b) Manager/Supervisor (f) Computer Operator (j) Sales/Marketing
(c) Scientist/Engineer (g) Software Support (k) Other (Please specify) _____
(d) Programmer/Analyst (h) Hardware Support

OPTIONAL INFORMATION

Name _____ Job Title _____
Street _____ Company _____
City _____ Department _____
State/Country _____ Telephone Number _____
Postal (ZIP) Code _____ Date _____

THANK YOU FOR YOUR COMMENTS AND SUGGESTIONS.

Please do not use this form to order manuals. Contact your representative at Digital Equipment Corporation or (in the USA) call our DECdirect™ department at this toll-free number : 800-258-1710

MicroVAX 3100
VAXserver 3100
MODEL 20
MODEL 20e
InfoServer 100

MicroVAX 3100
VAXserver 3100
MODEL 10
MODEL 10e