

ILLUSTRATED PARTS BREAKDOWN

DECsystem 5900

ILLUSTRATED PARTS BREAKDOWN (IPB)

The IPB is used to identify a part and its location in a hardware product. The document references specific item numbers in the associated parts list.

HOW TO USE THE IPB

1. Locate the figure containing the item of interest.
2. Locate the number (callout) of the item of interest.
3. Locate that item number in the associated parts list.

FORMAT

Each IPB is generally organized based on its first figure. All other assemblies and subassemblies are referenced from this figure. Each figure contains numeric callouts of all major parts (items).

PARTS LIST

Each parts list contains the following:

Figure and Item No. – Lists the figure number and its referenced numeric callout

Description – Presents the name and a brief description of the item. A single asterisk (*) preceding the description

denotes item is a subassembly to its referenced figure. A double asterisk (**) preceding the description indicates that this item is subordinate to the preceding single asterisk item.

DEC Part No. – Lists the Digital/Vendor part number. The letter in the column heading indicates the current revision level of the Engineering Drawing for the referenced figure.

ECO Cut-In – Lists the top assembly drawing number and revision level at first printing. All additional revisions to an item are listed in this column.

Used On Code – Lists letters referring to the product variation assigned in Figure 1. When this column is blank, the item is used in all variations.

Ref Fig No. – Lists a cross reference between figures within the IPB.

PART NUMBER/PART DESCRIPTION INDEX SECTION

Lists items by part number numerically, and description alphabetically. Items are also referenced to a location within the IPB by figure and item number.

ECO/REVISION HISTORY					OTHER IPB MANUALS REFERENCED
FIGURE NO.	ASSEMBLY	INITIAL LEVEL	CURRENT LEVEL	PRINTING DATE	
1	240TB	00000	00000	23-MAR-92	N/A
2	70-29481	00000	00000		
3	70-29454	00000	00000		
4	70-29459	00000	00000		
5	SZ29X	00000	00000		
6	70-29460	00000	00000		
7	70-29354	00000	00000		
8	70-29464	00000	00000		

Digital Equipment Corporation reserves the right, without notice, to make substitutions and modifications in the specifications of products documented in this manual and further reserves the right to withdraw any of these products from the market without notice.

Digital Equipment Corporation is not responsible for errors which may appear in the technical description (including illustrations and photographs) of the products covered by this manual.

None of the descriptions contained in this manual imply the granting of any license whatsoever to make, use or sell equipment constructed in accordance therewith.

Restricted Rights: Use, duplication or disclosure by the U.S. Government is subject to restrictions as set forth in subparagraph (c) (1) (ii) of the Rights in Technical Data and Computer Software clause at DFARS 252.227-2713.

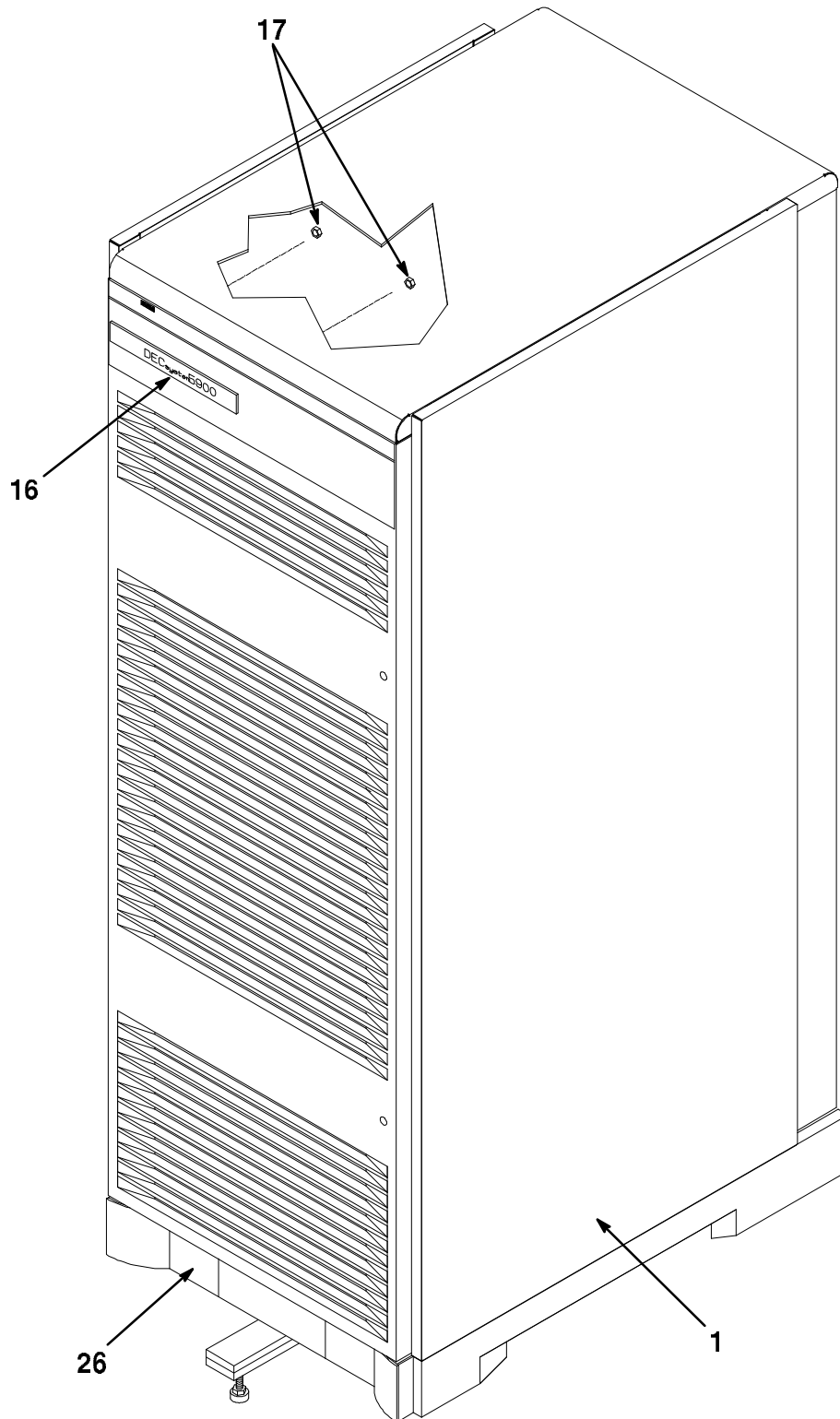
Copyright © 1992 by Digital Equipment Corporation. All rights reserved.
Printed in U.S.A.

The postage-paid READER'S COMMENTS form on the last page of this document requests your critical evaluation to assist us in preparing future documentation.

The following are trademarks of Digital Equipment Corporation :

DECdirect, DECsystem, TURBOchannel and the DIGITAL logo.

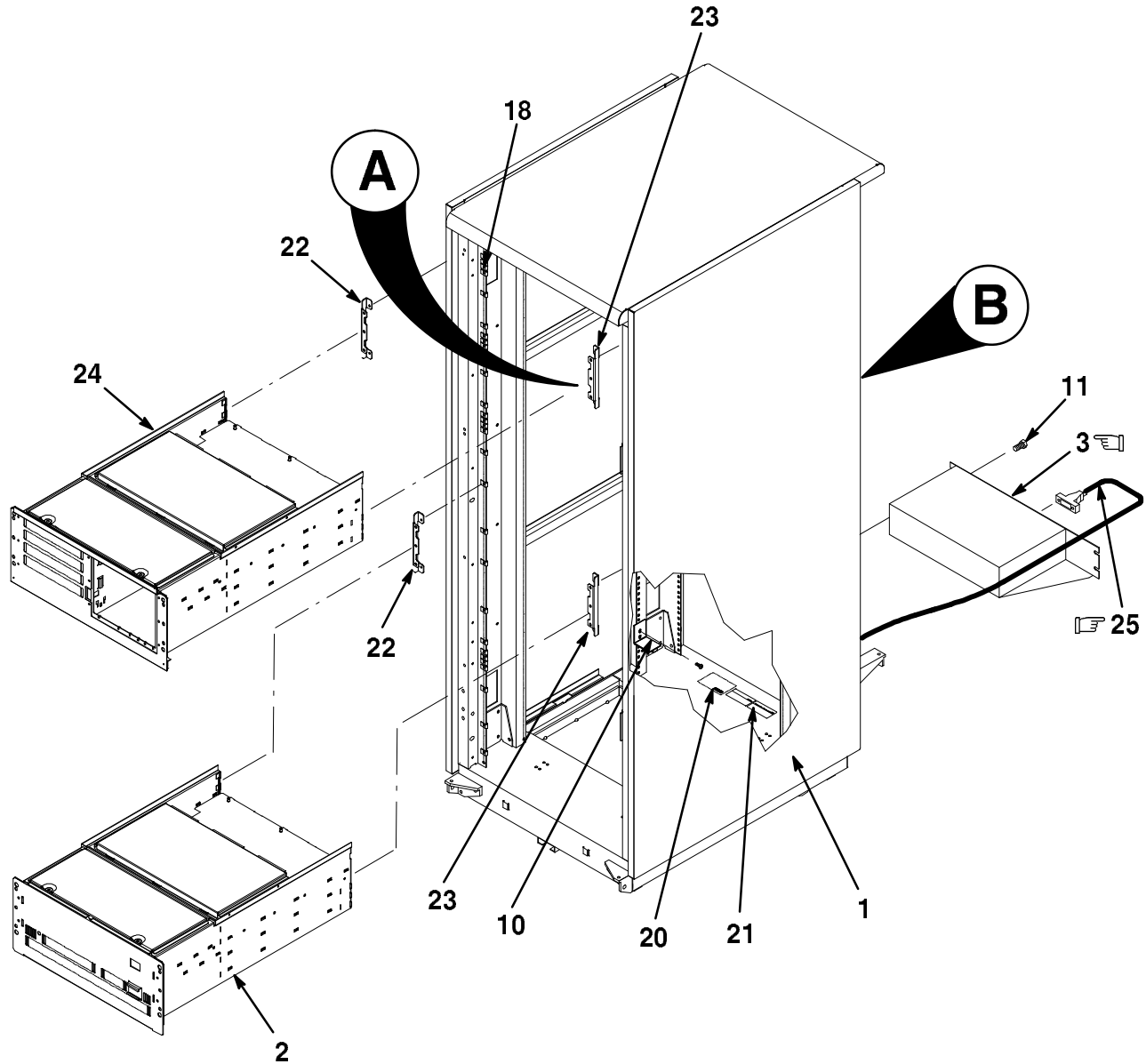
 INDICATES FRU LEVEL PARTS.



D590A-01-IL

Figure 1. Kernel Assembly, DECsystem 5900 (Sheet 1 of 4)

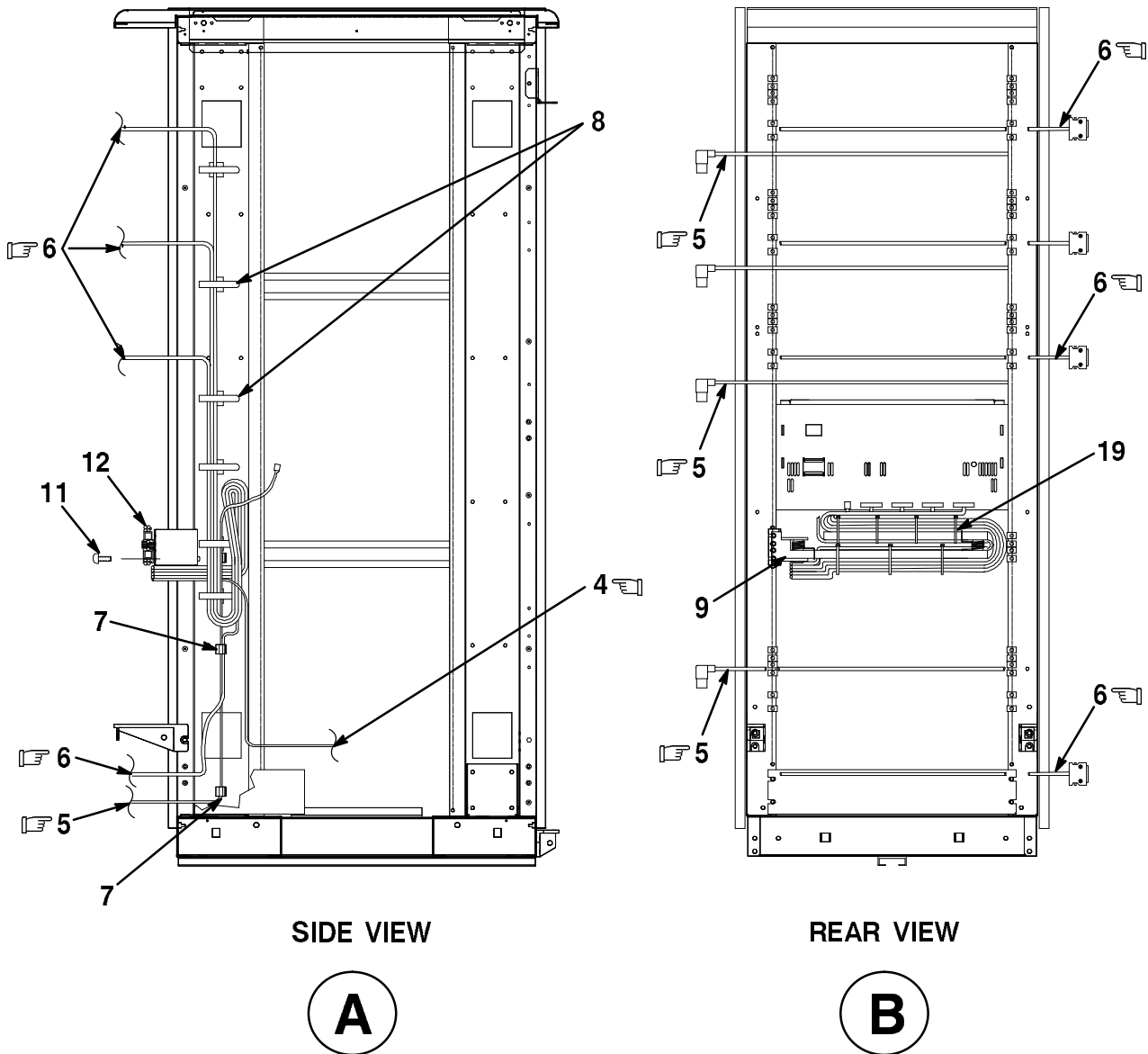
  INDICATES FRU LEVEL PARTS.



D590A-01A-IL

Figure 1. Kernel Assembly, DECsystem 5900 (Sheet 2 of 4)

INDICATES FRU LEVEL PARTS.

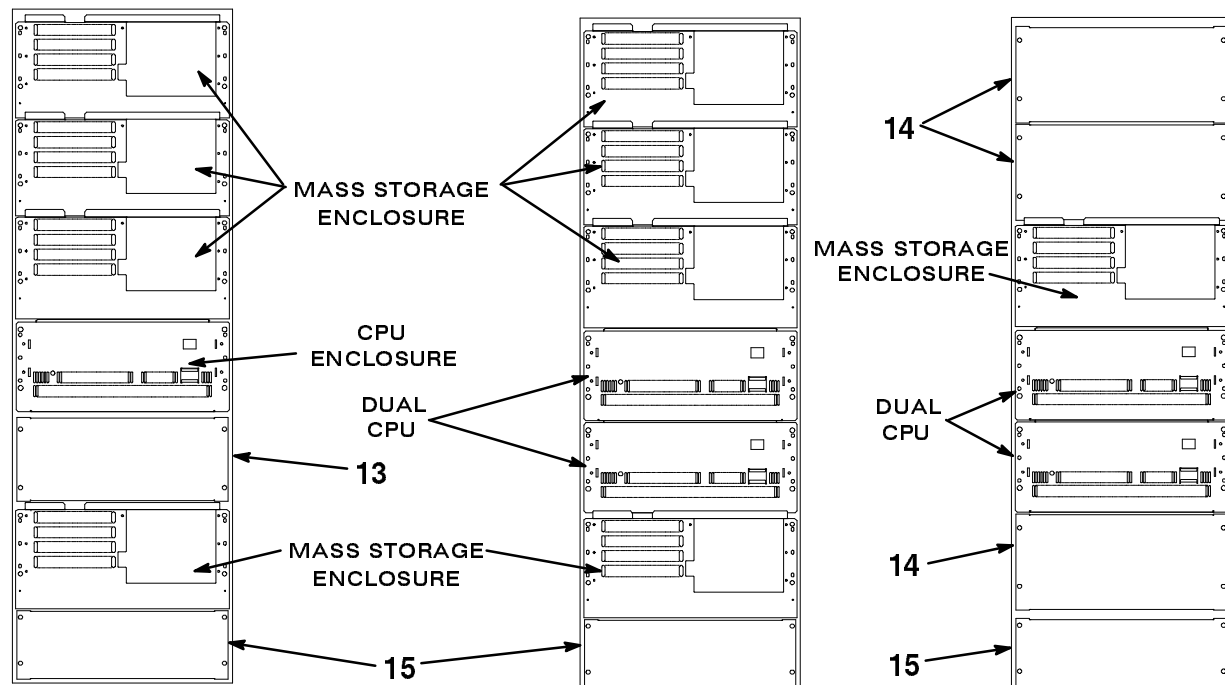
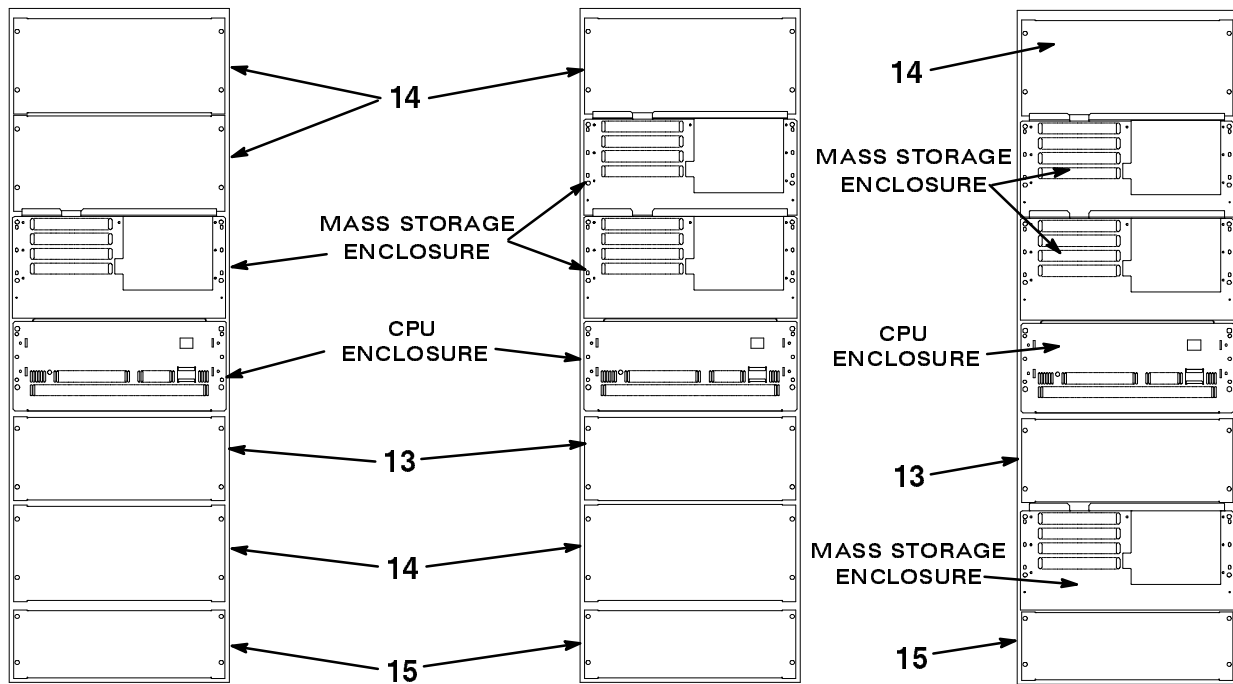


D590A-01B-IL

Figure 1. Kernel Assembly, DECsystem 5900 (Sheet 3 of 4)

INDICATES FRU LEVEL PARTS.

PARTS LIST



D590A-01C-IL

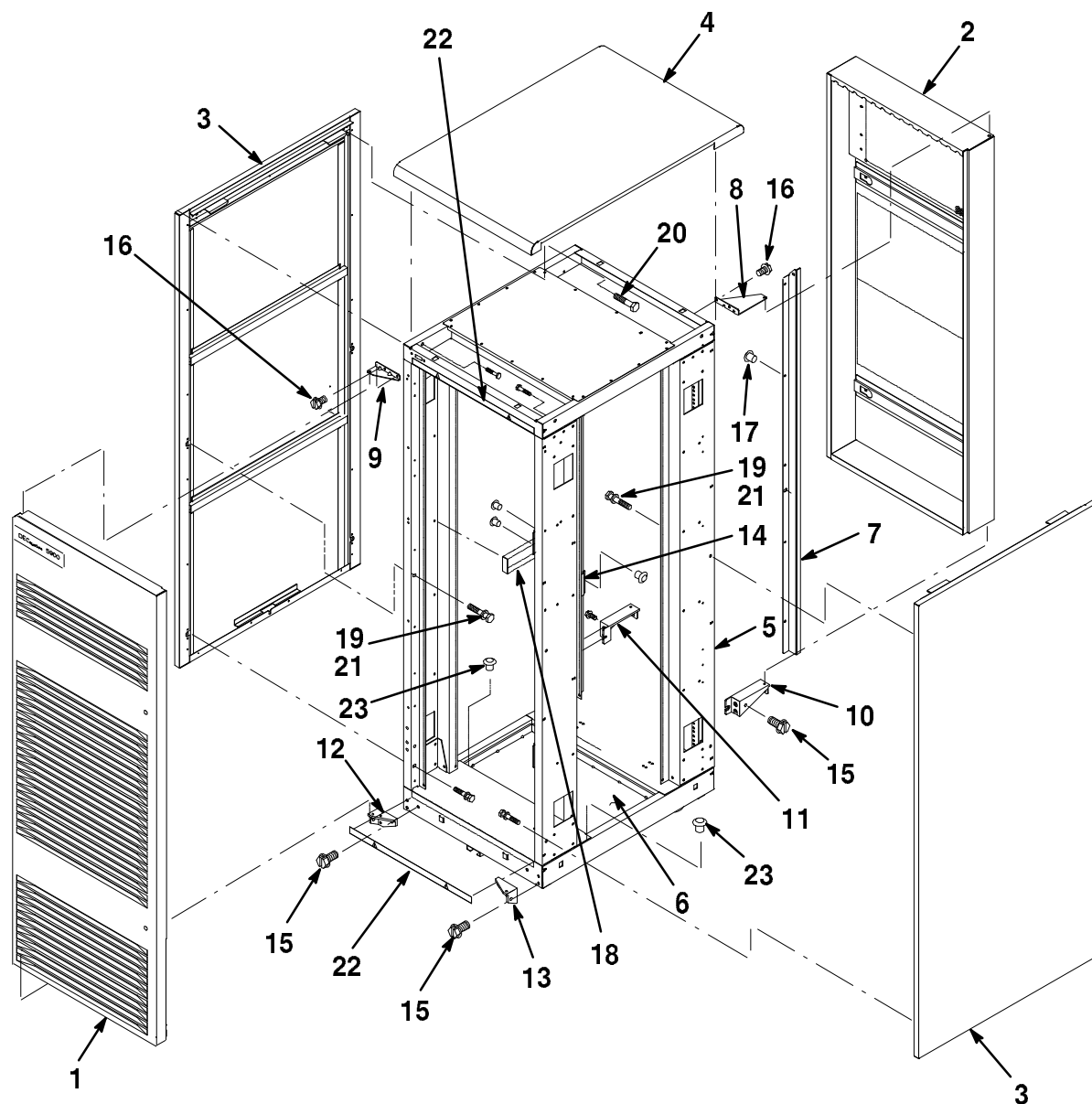
SYSTEM CONFIGURATIONS

Figure 1. Kernel Assembly, DECsystem 5900 (Sheet 4 of 4)

FIG.& ITEM NO.	DESCRIPTION	DEC PART NO. ^A	ECO CUT-IN 240TB 00000	USED ON CODE	REF FIG NO.
1-	KERNEL ASSEMBLY, DECsystem 5900				
	Code A - Model 240TB-A2, 64 MB 120V	240TB-A2		A	
	Code B - Model 240TB-A3, 64 MB 240V	240TB-A3		B	
1	*CABINET ASSEMBLY, DECsystem 5900	70-29481-01			2
2	*DRAWER ASSEMBLY, CPU	70-29454-01			3
☞ 3	*Controller, Power 24A 120V	30-35415-01		A	
☞	*Controller, Power 16A 240V	30-35415-02		B	
☞ 4	*Power Cord, 15A (9 Ft.)	17-00442-19			
☞ 5	*Cable Assembly, Remote Sensor to Power Contr	17-00931-02			
☞ 6	*Cable Assembly, SCSI, Drawer to Drawer	17-03361-01			
7	*Clip, Wire Routing (Adhesive Backed)	12-21249-06			
8	*Cable Clamp	12-37658-01			
9	*Carrier, Cable Steel	12-26281-01			
10	*Bracket, Controller Support	74-44230-01			
11	*Screw, Sems Hex Hd No. 10-32 x 1/2	90-00049-45			
12	*Bracket, Cable Arm Extension	74-44806-01			
13	*Panel, Drawer Filler	74-44425-01			
14	*Panel, Mass Storage Gap Filler	74-44557-01			
15	*Panel, Bottom Filler	74-44613-01			
16	*Nameplate, ID	74-44616-01			
17	*Nut, Kep No. 6-32 x 5/16	90-06560-00			
18	*Nut, Kep No. 10-32 x 5/8	90-07786-00			
19	*Cable Tie	90-09617-00			
20	*Label, "DECsystem 5900" (U.S.)	36-34565-03		B	
	*Label, "DECsystem 5900" (U.K.)	36-34565-04		B	
	*Label, "DECsystem 5900" (U.S.)	36-34565-05		A	
	*Label, "DECsystem 5900" (U.K.)	36-34565-06		A	
21	*Label, "EMI, Class A"	36-33285-01			
22	Bracket, Restraint (L.H.) (See Note 1)	74-44229-02			
23	Bracket, Restraint (R.H.) (See Note 1)	74-44229-01			
24	Enclosure Assembly, Mass Storage (See Note 2)	SZ29X-XA			
	Enclosure Assembly, Mass Storage (See Note 2)	SZ29X-XB			
☞ 25	Cable Assembly, Remote Sensor Power (See Note 3)	17-00931-05			
26	*Kit, 600 mm Trim	H9C00-UA			
	ITEMS (Not Shown)				
	*Package Assembly	37-01309-03			
	*Kit, Accessories	70-29474-01			
	NOTE 1: Not Part Of This Assembly, Shown For Reference Only, See Figure 3.				
	NOTE 2: Not Part Of This Assembly, Shown For Reference Only, See Figure 5.				
	NOTE 3: Not Part Of This Assembly, Shown For Reference Only.				

THIS PAGE INTENTIONALLY LEFT BLANK

INDICATES FRU LEVEL PARTS.

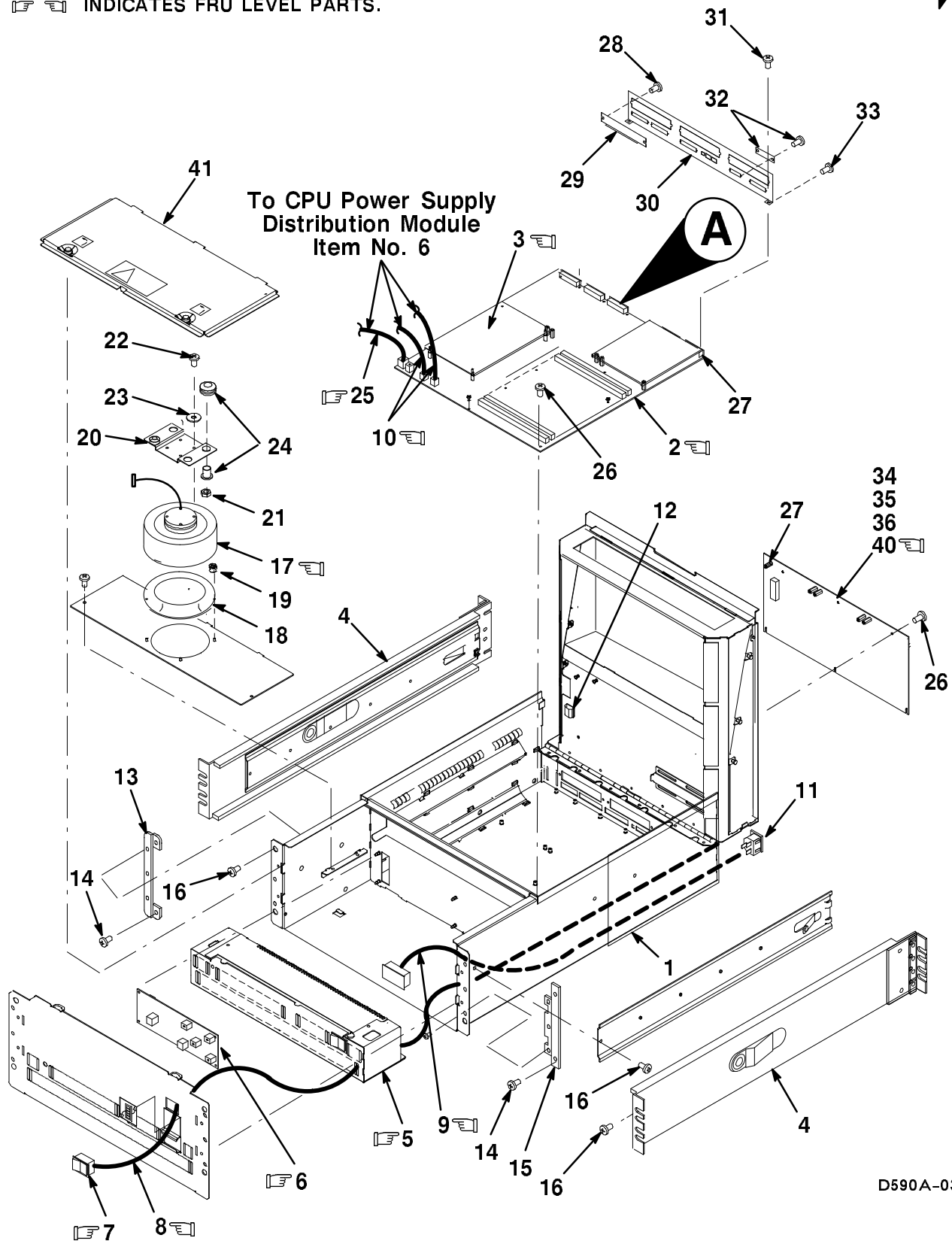


D590A-02-IL

Figure 2. Cabinet Assembly, DECsystem 5900

FIG.& ITEM NO.	DESCRIPTION	DEC PART NO. ^A	ECO CUT-IN 70-29481 00000	USED ON CODE	REF FIG NO.
2-	CABINET ASSEMBLY, DECsystem 5900	70-29481-01			1
1	*DOOR ASSEMBLY, FRONT	70-29354-02			7
2	*DOOR ASSEMBLY, REAR	70-29364-01			8
3	*Panel Assembly, End	70-28566-01			
4	*Cover Assembly, Top	70-28502-01			
5	*Frame Assembly	70-26919-01			
6	*Screen Assembly, Bottom	70-28562-02			
7	*Seal, Rear Cutout (L.H.)	74-44239-01			
8	*Bracket, Top Rear Hinge (L.H.)	74-41543-01			
9	*Bracket, Top Front Hinge (L.H.)	74-41542-01			
10	*Bracket Assembly, Railmount (L.H. w/Pin)	70-28560-01			
11	*Bracket Assembly, Railmount (R.H. w/Pad)	70-28560-02			
12	*Bracket Assembly, Front (L.H. w/Pin)	70-26913-01			
13	*Bracket Assembly, Front (R.H. w/Pad)	70-26913-02			
14	*Latch, Door	74-41803-01			
15	*Screw, Sems Hex Hd No. 1/4-20 x 3/4	90-09988-14			
16	*Screw, Sems Hex Hd No. 10-32 x 1/2	90-09988-05			
17	*Rivet, Blind Dome	90-09241-00			
18	*Plate, Strike	12-37240-01			
19	*Screw, Sems Hex Hd No. 1/4-20 x 2	90-09988-21			
20	*Screw, Sems Hex Hd No. 1/4-20 x 1 3/4	90-09988-20			
21	*Washer, Flat	90-06646-00			
22	*Label, "Warning Cabinet Stabilizer"	36-37532-01			
23	*Rivet, Blind Dome	90-00030-04			
	ITEM (Not Shown)				
	*Package Assembly	37-01309-02			

INDICATES FRU LEVEL PARTS.



D590A-03-IL

Figure 3. Drawer Assembly, CPU (Sheet 1 of 2)

INDICATES FRU LEVEL PARTS.

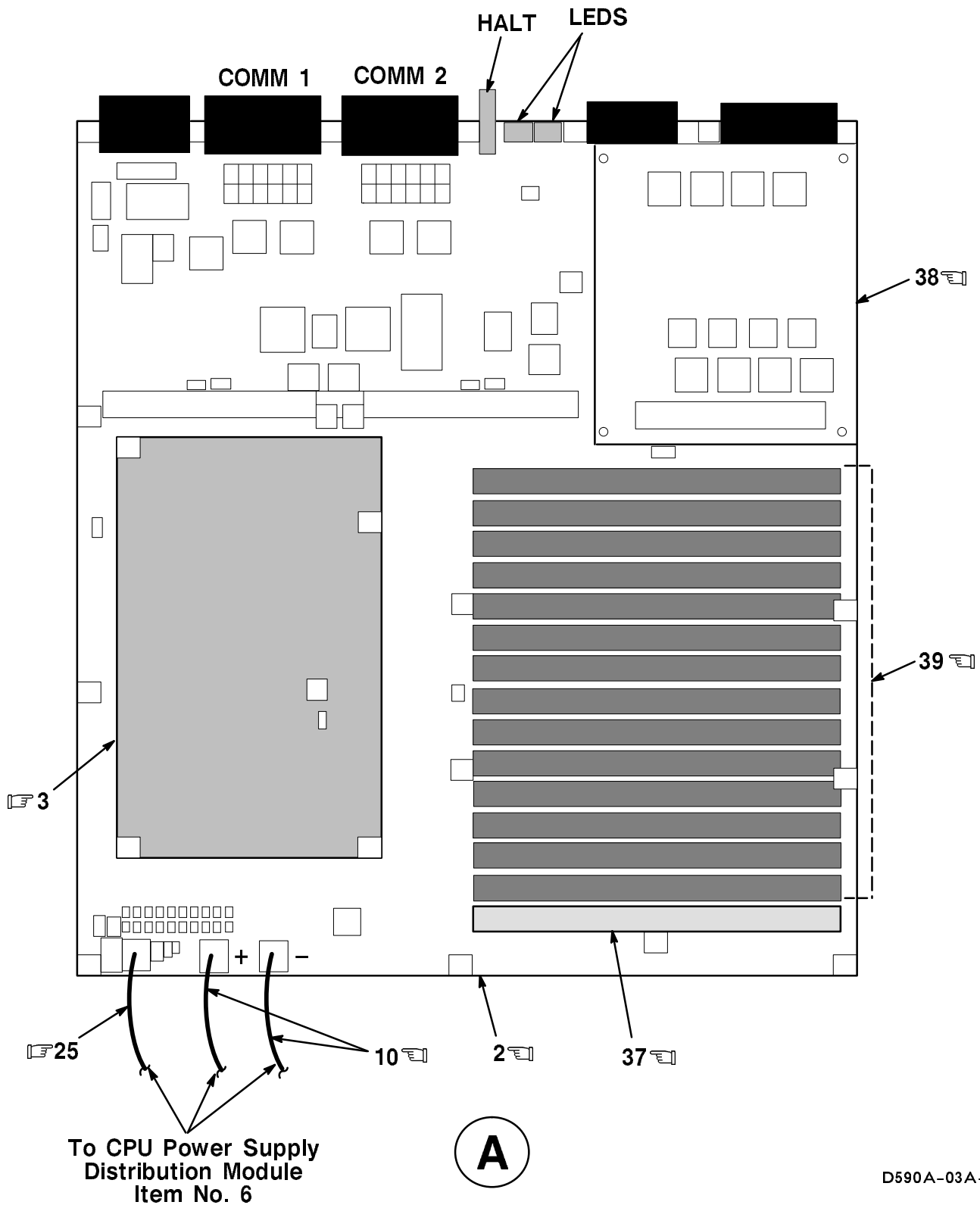


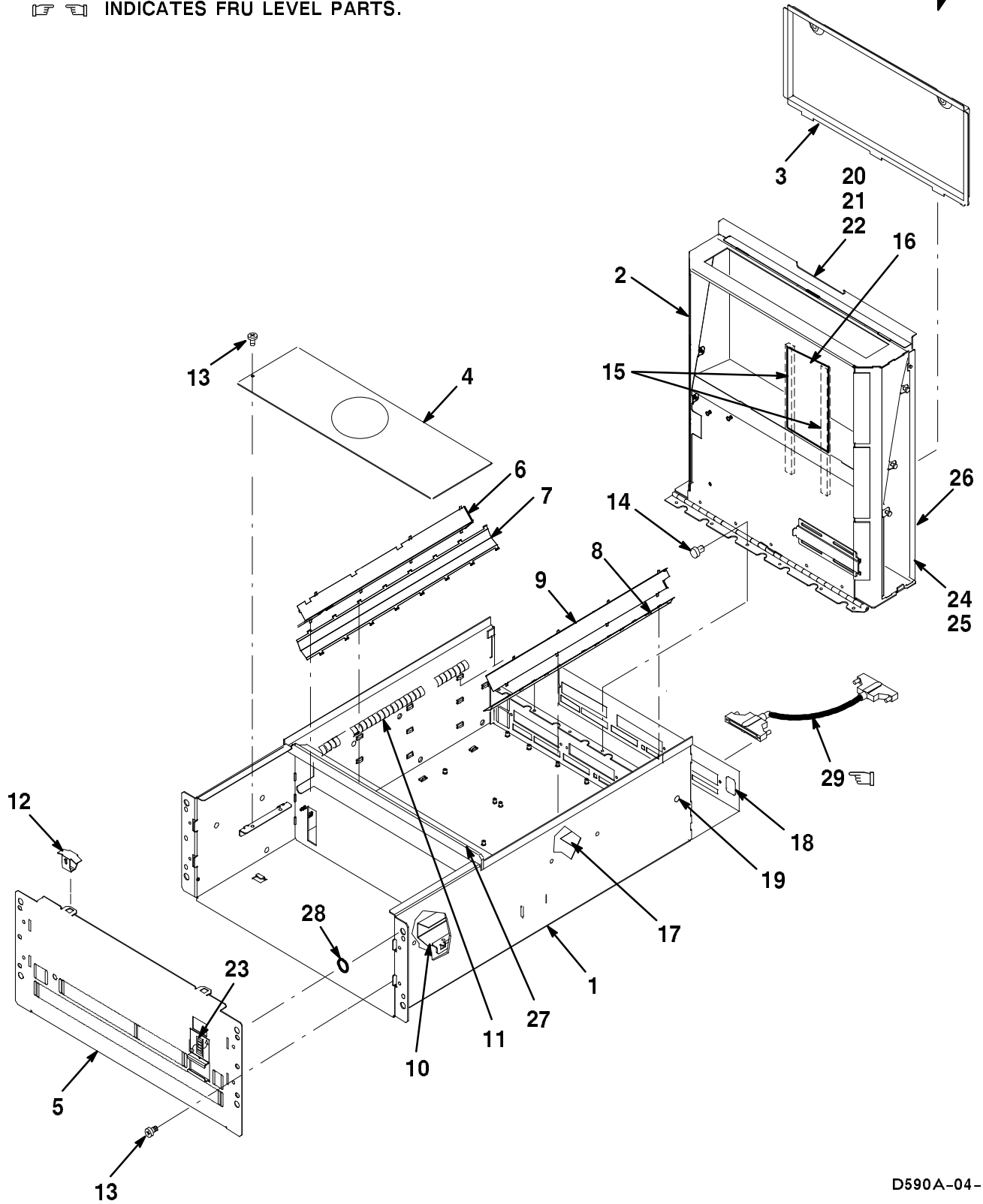
Figure 3. Drawer Assembly, CPU (Sheet 2 of 2)

FIG.& ITEM NO.	DESCRIPTION	DEC PART NO. ^A	ECO CUT-IN 70-29454 00000	USED ON CODE	REF FIG NO.
3-	DRAWER ASSEMBLY, CPU	70-29454-01			1
1	*CHASSIS ASSEMBLY, CPU	70-29459-01			4
☞ 2	*SYSTEM MODULE/STIFFENER ASSEMBLY (See Note 1)	70-28348-01			
	**Module, System KN03A-AA (See Note 1)	54-20617-01			
☞ 3	*Module, 40 MHZ CPU KN03-GA	54-20627-01			
4	*Slide, Non-Pivoting Chassis	12-37218-01			
☞ 5	*Power Supply Assembly, 244W	30-32506-03			
☞ 6	*Module, CPU Power Supply Distribution	54-21333-01			
7	*Switch, Low Power, Panel Mount, Rocker	12-24160-02			
☞ 8	*Cable Assembly, Remote Switch	17-03379-01			
☞ 9	*Cable Assembly, AC Input Harness	17-03362-01			
☞ 10	*Power Harness Assembly, CPU +5V	17-03364-01			
11	*Connector, Power Receptacle 6A 250V	12-17874-03			
12	*Clip, Wire Routing (Adhesive Backed)	12-21249-06			
13	*Bracket, Restraint (L.H.)	74-44229-02			
14	*Screw, Sems Hex Hd No. 10-32 x 1/2	90-00049-45			
15	*Bracket, Restraint (R.H.)	74-44229-01			
16	*Screw, Machine Pan Hd No. 10-32 x 1/4	90-08007-01			
☞ 17	*Blower, Brushless DC Motor	12-37483-01			
18	*Ring, Blower Inlet	90-11292-01			
19	*Nut, Kep No. 6-32 x 5/16	90-06560-00			
20	*Plate, Blower Adaptor	74-43855-01			
21	*Nut, Kep No. 8-32 x 11/32	90-06563-00			
22	*Screw, Machine Pan Hd M4 x 6 mm	90-10556-11			
23	*Washer, Flat	90-06662-00			
24	*Isolator, Shock	12-32626-01			
☞ 25	*Cable Assembly, P.S. Logic	17-03363-01			
26	*Screw, Filister Hd No. 6-32 x 1/4	90-11139-01			
27	*Standoff, Hex 3/16	12-33793-01			
28	*Screw, Machine Pan Hd No. 6-32 x 1/4	90-00038-19			
29	*Bulkhead Assembly, Blank	74-41143-05			
30	*Shield, Rear Bulkhead KN03-AA	74-40476-03			
31	*Screw, Lock	90-08451-12			
32	*Slide Latch Assembly	12-27576-02			
33	*Screw, Machine Pan Hd No. 4-40 x 3/16	90-08032-01			
34	*Nut, Kep No. 10-32 x 3/8	90-06565-00			
35	*Washer, Lock	90-07651-00			
36	*Label, CPU Serial Number (U.S.)	36-34565-07			
	*Label, CPU Serial Number (U.K.)	36-34565-08			
	<p>NOTE 1: The system module FRU (54-20617-01) is ORDERABLE ONLY WITH THE METAL STIFFENER (70-28348-01). Return the defective module fastened to the stiffener.</p>				

FIG.& ITEM NO.	DESCRIPTION	DEC PART NO. ^A	ECO CUT-IN 70-29454 00000	USED ON CODE	REF FIG NO.
3-					
☞ 37	Module, NVRAM 1 MB (See Note 2)	54-20948-01			
☞ 38	Module, TCE Option (See Note 2) (Interfaces TCE to TURBOchannel)	54-20623-01			
☞ 39	Module, Memory 32 MB (See Note 2)	MSO2-CA			
☞ 40	Module, TURBOchannel Extender (See Note 2)	54-20625-01			
41	*Cover Assembly, Fan/Power Supply	70-29462-01			
	TURBOchannel Options (Not Shown) (See Note 2)				
☞	TURBOchannel to Thickwire Option (PMAD)	54-19874-01			
☞	TURBOchannel to SCSI Option (PMAZ)	54-19876-01			
☞	TURBOchannel to FDDI Option (DEFZA-AA)	70-26944-01			
☞	TURBOchannel to FDDI-Copper Option (DEFZA-CA)	70-22710-01			
	CABLES (Not Shown) (See Note 2)				
☞	Cable Assembly, TCE Power Harness	17-03365-01			
☞	Cable Assembly, SCSI (PMAZ)	17-02641-02			
	NOTE 2: Not Part of This Assembly, Shown For Reference Only.				

PARTS LIST

  INDICATES FRU LEVEL PARTS.



D590A-04-IL

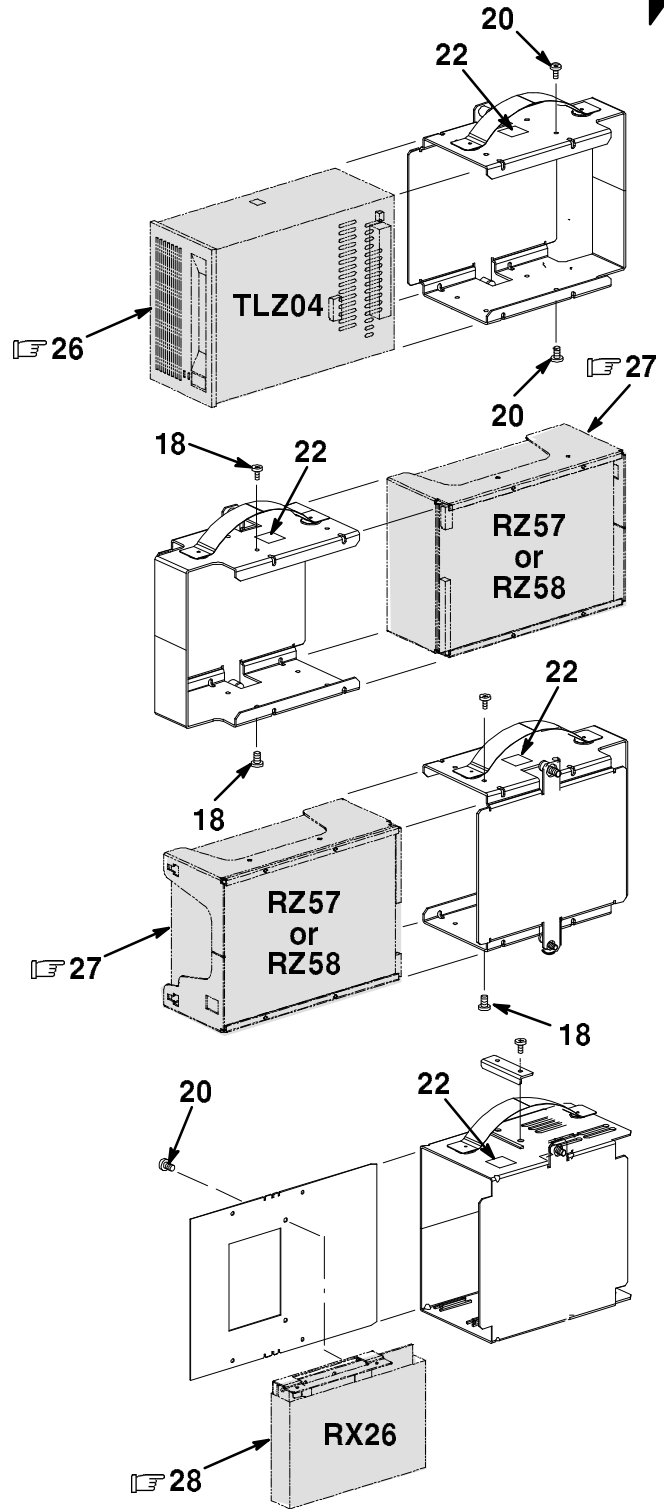
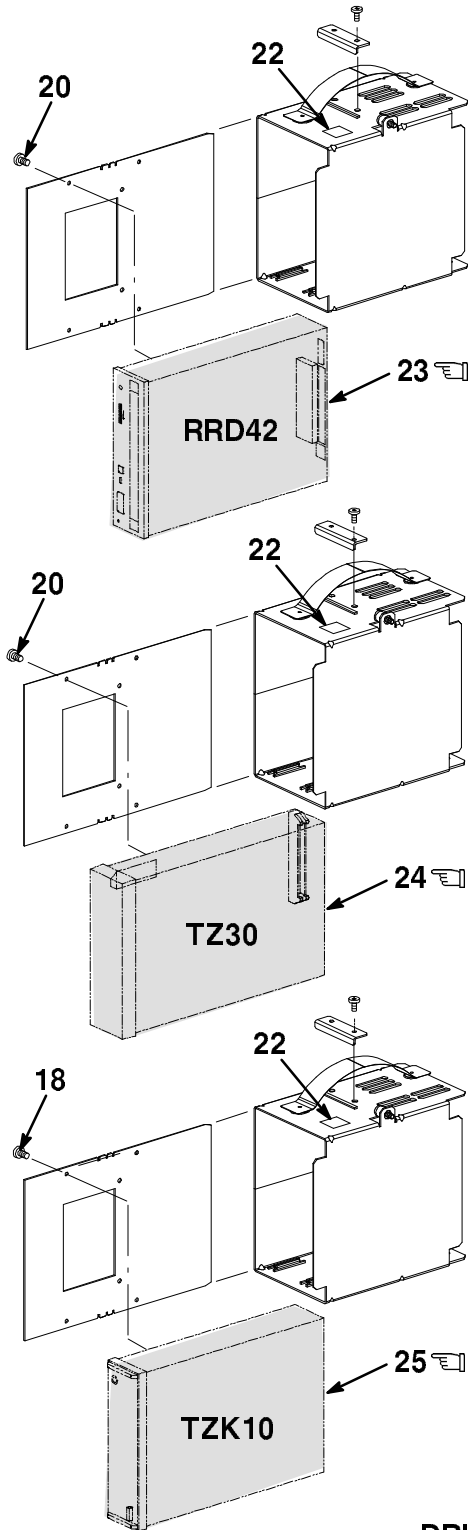
Figure 4. Chassis Assembly, CPU

FIG.& ITEM NO.	DESCRIPTION	DEC PART NO. ^A	ECO CUT-IN 70-29459 00000	USED ON CODE	REF FIG NO.
4-	CHASSIS ASSEMBLY, CPU	70-29459-01			3
1	*Chassis Weldment, CPU	70-29452-01			
2	*Chassis Assembly, TCE	70-29486-01			
3	*Cover Assembly, TCE/Power	70-29462-02			
4	*Cover, Cowel Support	74-43971-01			
5	*Chassis, Front CPU	74-44109-01			
6	*Divider, Air	74-43859-01			
7	*Deflector, Left Air	74-43916-01			
8	*Deflector, Right Air	74-43860-01			
9	*Isolator, AC Input EMI	74-43858-01			
10	*Isolator, AC Extension	74-44559-01			
11	*Shield, EMI/RFI, Finger Contact	12-26489-02			
12	*Receptacle, Compact 1/4 Turn	12-33963-10			
13	*Screw, Sems Pan Hd No. 6-32 x 1/4	90-10174-00			
14	*Rivet, Blind	90-00030-66			
15	*Pad, Foam	90-11275-02			
16	*Label, Memory Configuration Illustration	36-37627-01			
17	*Label, CPU Jumper Removal Illustration	36-37631-01			
18	*Label, Regulatory, CPU Bulkhead	36-37533-01			
19	*Label, Ground Symbol	36-12680-02			
20	*Label, Regulatory, Mass Storage/CPU	36-37662-01			
21	*Label, Warning, CPU Fan	36-37535-01			
22	*Label, CPU Slide Release, Left/Right	36-37534-01			
23	*Label, CPU Secondary On/Off	36-37628-01			
24	*Shield, EMI/RFI, Finger Contact	12-37853-01			
25	*Shield, EMI/RFI, Finger Contact	12-37853-02			
26	*Shield, EMI/RFI, Finger Contact	12-37853-03			
27	*Shield, EMI/RFI, Finger Contact	12-37853-04			
28	*Grommet, Round Rubber	90-07015-00			
29	Cable Assembly, TCE Interconnect (See Note)	17-03335-01			
	NOTE: Not Part Of This Assembly, Shown For Reference Only.				

Figure 5. Enclosure Assembly, Mass Storage (Sheet 1 of 2)

INDICATES FRU LEVEL PARTS.

PARTS LIST



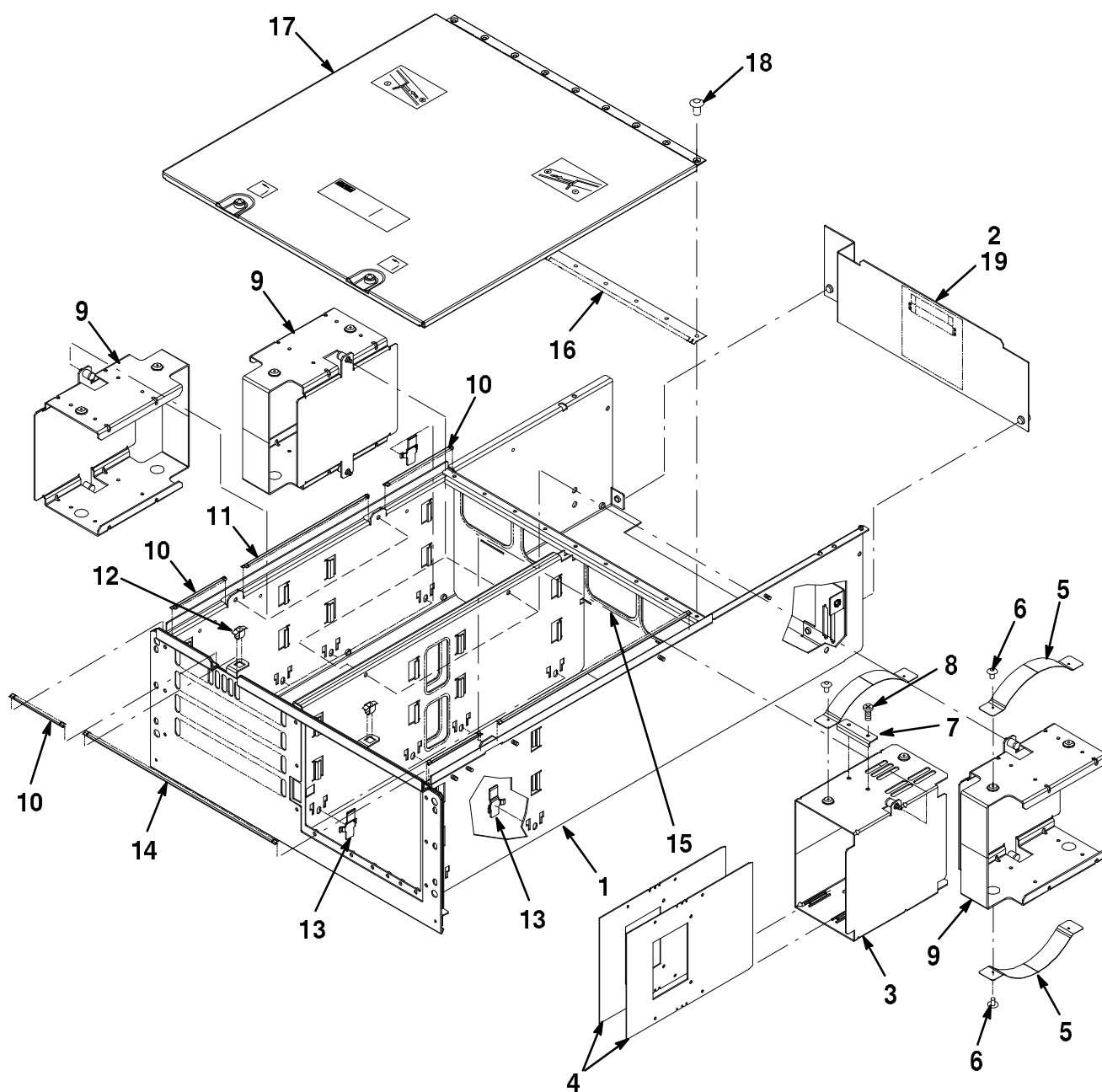
DRIVE MOUNT EXAMPLES

D590A-05A-IL

Figure 5. Enclosure Assembly, Mass Storage (Sheet 2 of 2)

FIG.& ITEM NO.	DESCRIPTION	DEC PART NO. ^A	ECO CUT-IN SZ29X 00000	USED ON CODE	REF FIG NO.
5-	ENCLOSURE ASSEMBLY, MASS STORAGE (Without Package Assembly)	SZ29X-XA			6
	ENCLOSURE ASSEMBLY, MASS STORAGE (With Package Assembly)	SZ29X-XB			
1	*CHASSIS ASSEMBLY, MASS STORAGE	70-29460-01			
☞ 2	*Power Supply, 400W, 12V	30-36340-01			
3	*Kit, Chassis Slide Mounting Bracket	22-01563-01			
4	*Bracket, Shipping	74-44668-01			
5	*Bracket, Restraint (R.H.)	74-44229-01			
6	*Bracket, Restraint (L.H.)	74-44229-02			
7	*Panel, Removable Filler	74-44615-01			
8	*Panel, RX26 Filler	74-44635-01			
9	*Panel, Full Height Filler	74-44421-01			
10	*Panel, Half Height Filler	74-44422-01			
☞ 11	*Wire Harness Assembly, Disk Power	17-03359-01			
☞ 12	*Cable Assembly, Internal SCSI	17-03366-01			
☞ 13	*Cable Assembly, Power Switch	17-03360-01			
14	*Switch, Rocker LED Indicator, 5V	12-37121-01			
☞ 15	*Terminator, External SCSI	12-37004-01			
16	*Nut, Kep No. 8-32 x 11/32	90-06563-00			
17	*Screw, Machine Pan Hd No. 8-32 x 1/2	90-06039-01			
18	*Screw, Sems Pan Hd No. 6-32 x 1/4	90-10174-00			
19	*Screw, Sems Hex Hd No. 10-32 x 1/2	90-00049-45			
20	*Screw, Sems Pan Hd, M3 x 6 mm	90-11187-03			
21	*Label, Serial, Mass Storage (U.S.)	36-34565-09			
	*Label, Serial, Mass Storage (U.K.)	36-34565-10			
22	*Label, Device ID Numbers	36-37630-01			
☞ 23	*Drive Assembly, RRD42 Disk, 600 MB CDROM	RRD42-AA			
☞ 24	*Drive Assembly, TZ30 Tape, 95 MB	TZ30-AX			
☞ 25	*Drive Assembly, TZK10 Tape, 525 MB QIC	TZK10-AA			
☞ 26	*Drive Assembly, TLZ04 Tape, 1.2 GB DAT	TLZ04-AA			
☞ 27	*Drive Assembly, RZ57 Disk, 1.0 GB (HDA)	29-28158-01			
☞	*Drive Assembly, RZ57 Disk, 1.0 GB Drive Module	29-28159-01			
☞	*Drive Assembly, RZ58 Disk, 1.3 GB	RZ58-E			
☞ 28	*DRIVE ASSEMBLY, RX26 DISK, 2.8 MB	RX26-AA			
☞	**Module, FDI (Not Shown)	54-20764-02			
☞	**Cable Assembly, RX26 Internal (Not Shown)	17-00285-00			
☞	**Cable Assembly, RX26 Power (Not Shown)	17-03400-01			
	ITEMS (Not Shown)				
☞	Cable Assembly, SCSI Jumper (See Note)	17-03380-01			
☞	Terminator, Internal SCSI (See Note)	12-36929-01			
	*Package Assembly	37-01348-01			
	NOTE: Not Part Of This Assembly, Shown For Reference Only.				

THIS PAGE INTENTIONALLY LEFT BLANK



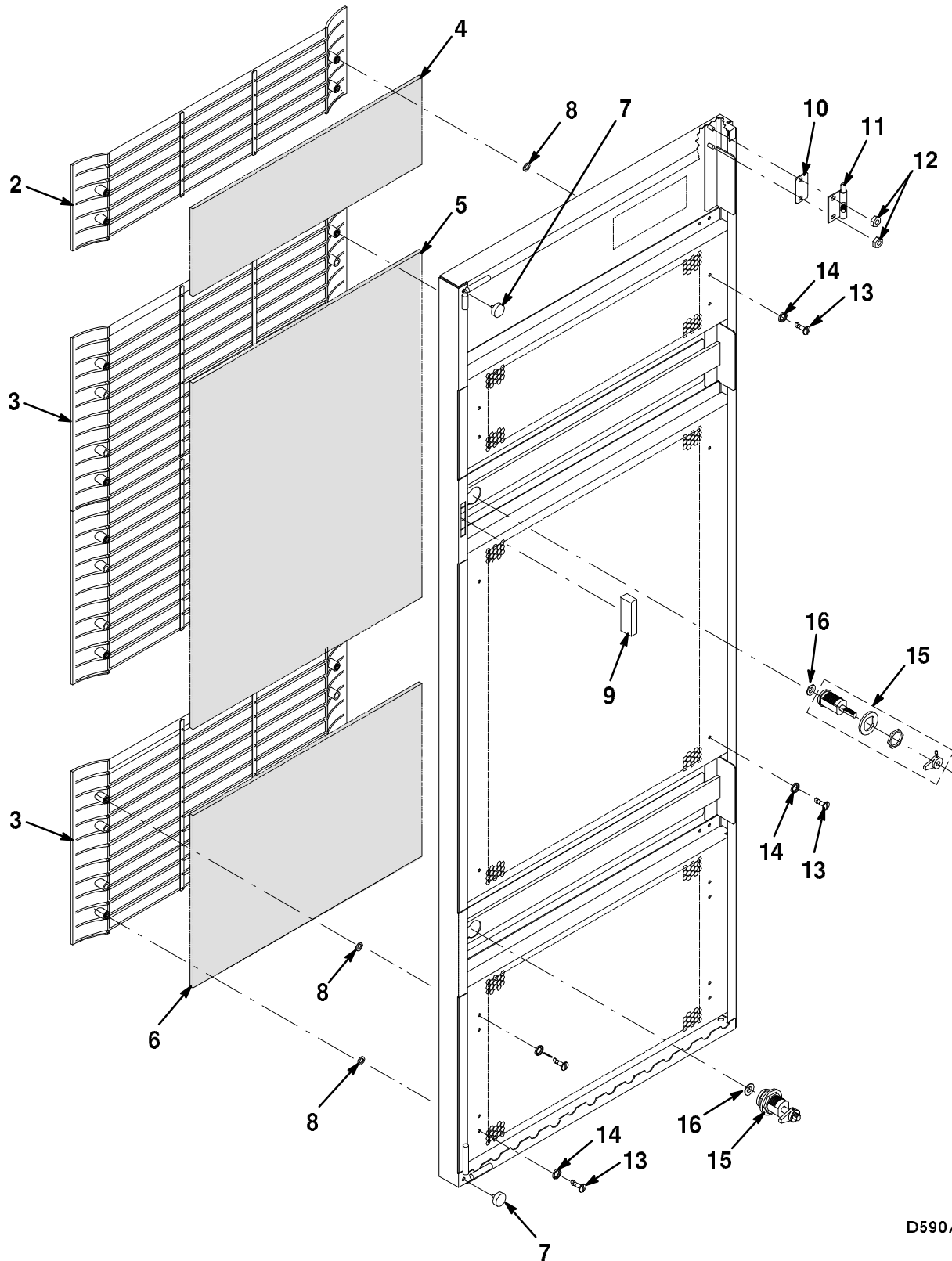
D590A-06-IL

Figure 6. Chassis Assembly, Mass Storage

FIG.& ITEM NO.	DESCRIPTION	DEC PART NO. ^A	ECO CUT-IN 70-29460 00000	USED ON CODE	REF FIG NO.
6-	CHASSIS ASSEMBLY, MASS STORAGE	70-29460-01			5
1	*Chassis Weldment, Mass Storage	70-29449-01			
2	*Bracket, Rear Chassis	74-43992-01			
3	*Bracket, Half Height Drive	74-43842-01			
4	*Plate, Drive Mounting	74-43847-01			
5	*Handle	74-44228-01			
6	*Rivet, Blind Dome	90-06505-00			
7	*Bracket, Half Height Stop	74-44617-01			
8	*Screw, Sems Pan Hd No. 6-32 x 1/4	90-10174-00			
9	*Bracket, Drive Slide	74-43843-01			
10	*Shield, EMI/RFI, Finger Contact (2 Inch)	12-16007-13			
11	*Shield, EMI/RFI, Finger Contact (6 1/2 Inches)	12-16007-14			
12	*Receptacle, Compact 1/4 Turn	12-33963-10			
13	*Clip, Spring	74-43846-01			
14	*Shield, EMI/RFI, Finger Contact	12-16007-11			
15	*Grommet, Caterpillar	12-25469-01			
16	*Shield, EMI/RFI, Finger Contact	12-37207-01			
17	*Cover Assembly, Mass Storage	70-29461-01			
18	*Rivet, Blind	90-00030-89			
19	*Label, System Shipping Restraint	36-37632-01			

INDICATES FRU LEVEL PARTS.

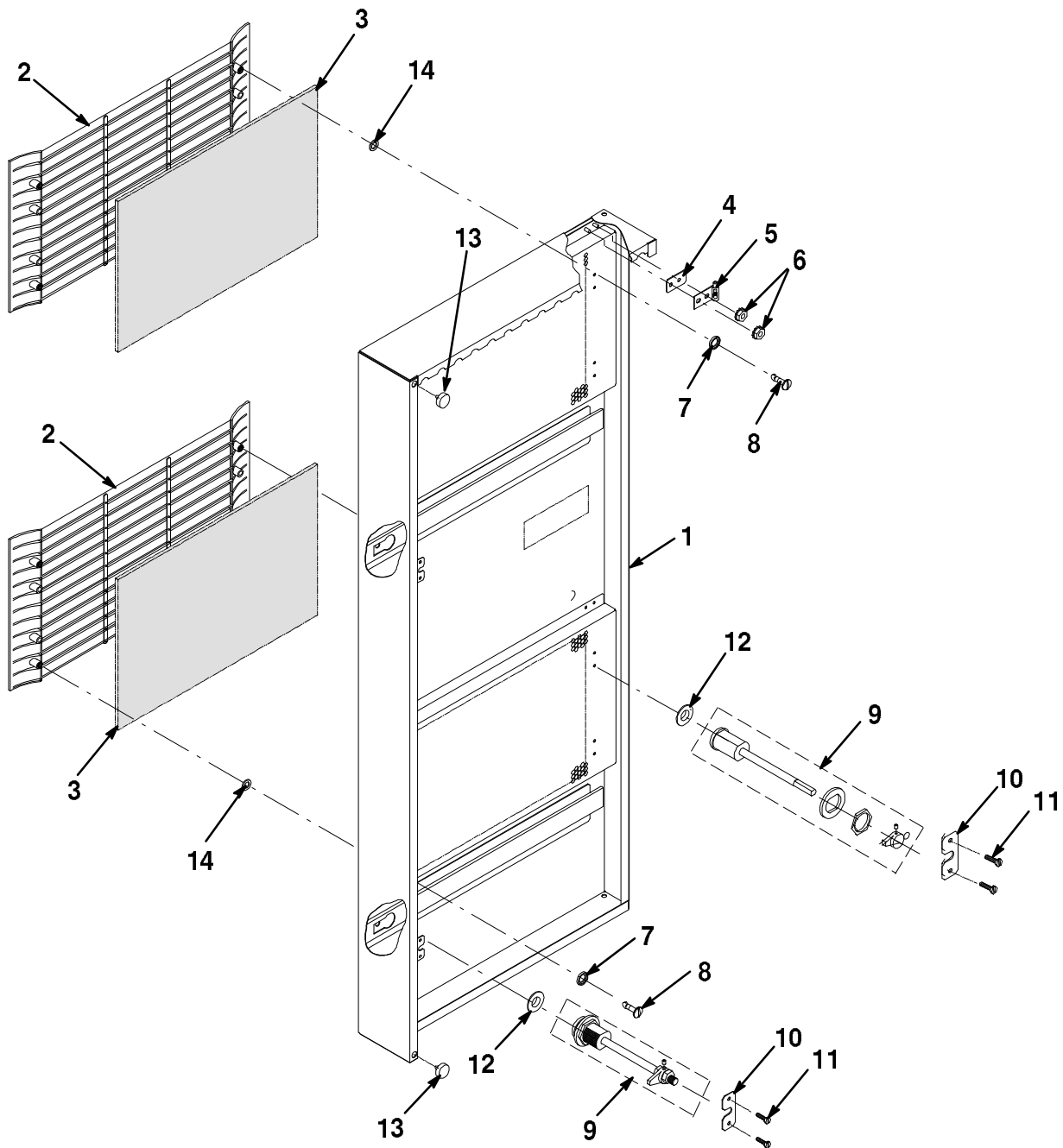
PARTS LIST



D590A-IL-07

Figure 7. Door Assembly, Front

FIG.& ITEM NO.	DESCRIPTION	AX05 DEC PART NO.	ECO CUT-IN 70-29354 00000	USED ON CODE	REF FIG NO.
7-	DOOR ASSEMBLY, FRONT	70-29354-02			2
1	*Weldment, Front Door	70-29337-02			
2	*Grill Assembly, Door, 150 mm	70-29339-05			
3	*Grill Assembly, Door, 300 mm	70-29339-01			
4	*Foam, Filter	12-13121-36			
5	*Foam, Filter	12-13121-35			
6	*Foam, Filter	12-13121-37			
7	*Bumper, Round	12-37241-01			
8	*Ring, Retainer	90-10681-01			
9	*Door Catch, Magnetic Snap-In	12-12908-01			
10	*Shim, Hinge	74-43480-01			
11	*Hinge, Pin (L.H.)	12-34975-01			
12	*Nut, Kep No. 10-32 x 3/8	90-06565-00			
13	*Fastener, 1/4 Turn Slot	90-09971-07			
14	*Fastener, 1/4 Turn Washer	90-09971-10			
15	*Latch, Pawl Type	12-34116-01			
16	*Washer, Nylon Shoulder	12-33964-01			



D590A-IL-08

Figure 8. Door Assembly, Rear

FIG.& ITEM NO.	DESCRIPTION	AX03 DEC PART NO.	ECO CUT-IN 70-29364 00000	USED ON CODE	REF FIG NO.
8-	DOOR ASSEMBLY, REAR	70-29364-01			2
1	*Weldment, Rear Door	70-29363-01			
2	*Grill Assembly, Door	70-29339-01			
3	*Foam, Filter	12-13121-35			
4	*Shim, Top Screen Hinge	74-43481-01			
5	*Hinge, Pin (L.H.)	12-34975-03			
6	*Nut, Kep No. 10-32 x 3/8	90-06565-00			
7	*Fastener, 1/4 Turn Washer	90-09971-10			
8	*Fastener, 1/4 Turn Slot	90-09971-02			
9	*Latch, Pawl Type	12-34116-02			
10	*Bracket, Pawl Support Lock	74-42092-01			
11	*Screw, Sems Hex Hd No. 6-32 x 1/4	90-09988-12			
12	*Washer, Nylon Shoulder	12-33964-01			
13	*Bumper, Round	12-37241-01			
14	*Ring, Retainer	90-10681-01			
					Ω

PART NUMBER/DESCRIPTION INDEX

INDEX BY DEC PART NUMBER

DECsystem 5900

PART NO.	DESCRIPTION	FIG NO.	ITEM NO.
12-12908-01	Door Catch, Magnetic Snap-In	7	9
12-13121-35	Foam, Filter	8	3
12-13121-35	Foam, Filter	7	5
12-13121-36	Foam, Filter	7	4
12-13121-37	Foam, Filter	7	6
12-16007-11	Shield, EMI/RFI, Finger Contact	6	14
12-16007-13	Shield, EMI/RFI, Finger Contact (2 Inch)	6	10
12-16007-14	Shield, EMI/RFI, Finger Contact (6 1/2 Inches)	6	11
12-17874-03	Connector, Power Receptacle 6A 250V	3	11
12-21249-06	Clip, Wire Routing (Adhesive Backed)	3	12
12-21249-06	Clip, Wire Routing (Adhesive Backed)	1	7
12-24160-02	Switch, Low Power, Panel Mount, Rocker	3	7
12-25469-01	Grommet, Caterpillar	6	15
12-26281-01	Carrier, Cable Steel	1	9
12-26489-02	Shield, EMI/RFI, Finger Contact	4	11
12-27576-02	Slide Latch Assembly	3	32
12-32626-01	Isolator, Shock	3	24
12-33793-01	Standoff, Hex 3/16	3	27
12-33963-10	Receptacle, Compact 1/4 Turn	4	12
12-33963-10	Receptacle, Compact 1/4 Turn	6	12
12-33964-01	Washer, Nylon Shoulder	8	12
12-33964-01	Washer, Nylon Shoulder	7	16
12-34116-01	Latch, Pawl Type	7	15
12-34116-02	Latch, Pawl Type	8	9
12-34975-01	Hinge, Pin (L.H.)	7	11
12-34975-03	Hinge, Pin (L.H.)	8	5
12-36929-01	Terminator, Internal SCSI	5	Not Shown
12-37004-01	Terminator, External SCSI	5	15
12-37121-01	Switch, Rocker LED Indicator, 5V	5	14
12-37207-01	Shield, EMI/RFI, Finger Contact	6	16
12-37218-01	Slide, Non-Pivoting Chassis	3	4
12-37240-01	Plate, Strike	2	18
12-37241-01	Bumper, Round	7	7
12-37241-01	Bumper, Round	8	13
12-37483-01	Blower, Brushless DC Motor	3	17
12-37658-01	Cable Clamp	1	8
12-37853-01	Shield, EMI/RFI, Finger Contact	4	24
12-37853-02	Shield, EMI/RFI, Finger Contact	4	25
12-37853-03	Shield, EMI/RFI, Finger Contact	4	26
12-37853-04	Shield, EMI/RFI, Finger Contact	4	27
17-00285-00	Cable Assembly, RX26 Internal	5	Not Shown
17-00442-19	Power Cord, 15A (9 Ft.)	1	4
17-00931-02	Cable Assembly, Remote Sensor to Power Contr.	1	5
17-00931-05	Cable Assembly, Remote Sensor Power	1	25
17-02641-02	Cable Assembly, SCSI (PMAZ)	3	Not Shown
17-03335-01	Cable Assembly, TCE Interconnect	4	29
17-03359-01	Wire Harness Assembly, Disk Power	5	11
17-03360-01	Cable Assembly, Power Switch	5	13
17-03361-01	Cable Assembly, SCSI, Drawer to Drawer	1	6
17-03362-01	Cable Assembly, AC Input Harness	3	9
17-03363-01	Cable Assembly, P.S. Logic	3	25
17-03364-01	Power Harness Assembly, CPU +5V	3	10
17-03365-01	Cable Assembly, TCE Power Harness	3	Not Shown
17-03366-01	Cable Assembly, Internal SCSI	5	12

INDEX BY DEC PART NUMBER

DECsystem 5900

PART NO.	DESCRIPTION	FIG NO.	ITEM NO.
17-03379-01	Cable Assembly, Remote Switch	3	8
17-03380-01	Cable Assembly, SCSI Jumper	5	Not Shown
17-03400-01	Cable Assembly, RX26 Power	5	Not Shown
22-01563-01	Kit, Chassis Slide Mounting Bracket	5	3
240TB-A2	Model 240TB-A2, 64 MB 120V	1	N/A
240TB-A3	Model 240TB-A3, 64 MB 240V	1	N/A
29-28158-01	Drive Assembly, RZ57 Disk, 1.0 GB (HDA)	5	27
29-28159-01	Drive Assembly, RZ57 Disk, 1.0 GB Drive Module	5	27
30-32506-03	Power Supply Assembly, 244W	3	5
30-35415-01	Controller, Power 24A 120V	1	3
30-35415-02	Controller, Power 16A 240V	1	3
30-36340-01	Power Supply, 400W, 12V	5	2
36-12680-02	Label, Ground Symbol	4	19
36-33285-01	Label, "EMI, Class A"	1	21
36-34565-03	Label, "DECsystem 5900" (U.S.)	1	20
36-34565-04	Label, "DECsystem 5900" (U.K.)	1	20
36-34565-05	Label, "DECsystem 5900" (U.S.)	1	20
36-34565-06	Label, "DECsystem 5900" (U.K.)	1	20
36-34565-07	Label, CPU Serial Number (U.S.)	3	36
36-34565-08	Label, CPU Serial Number (U.K.)	3	36
36-34565-09	Label, Serial, Mass Storage (U.S.)	5	21
36-34565-10	Label, Serial, Mass Storage (U.K.)	5	21
36-37532-01	Label, "Warning Cabinet Stabilizer"	2	22
36-37533-01	Label, Regulatory, CPU Bulkhead	4	18
36-37534-01	Label, CPU Slide Release, Left/Right	4	22
36-37535-01	Label, Warning, CPU Fan	4	21
36-37627-01	Label, Memory Configuration Illustration	4	16
36-37628-01	Label, CPU Secondary On/Off	4	23
36-37630-01	Label, Device ID Numbers	5	22
36-37631-01	Label, CPU Jumper Removal Illustration	4	17
36-37632-01	Label, System Shipping Restraint	6	19
36-37662-01	Label, Regulatory, Mass Storage/CPU	4	20
37-01309-02	Package Assembly	2	Not Shown
37-01309-03	Package Assembly	1	Not Shown
37-01348-01	Package Assembly	5	Not Shown
54-19874-01	TURBOchannel to Thickwire Option (PMAD)	3	Not Shown
54-19876-01	TURBOchannel to SCSI Option (PMAZ)	3	Not Shown
54-20617-01	Module, System KN03A-AA	3	2
54-20623-01	Module, TCE Option (Interfaces TCE to TURBOchannel)	3	38
54-20625-01	Module, TURBOchannel Extender	3	40
54-20627-01	Module, 40 MHZ CPU KN03-GA	3	3
54-20764-02	Module, FDI	5	Not Shown
54-20948-01	Module, NVRAM 1 MB	3	37
54-21333-01	Module, CPU Power Supply Distribution	3	6
70-22710-01	TURBOchannel to FDDI-Copper Option (DEFZA-CA)	3	Not Shown
70-26913-01	Bracket Assembly, Front (L.H. w/Pin)	2	12
70-26913-02	Bracket Assembly, Front (R.H. w/Pad)	2	13
70-26919-01	Frame Assembly	2	5
70-26944-01	TURBOchannel to FDDI Option (DEFZA-AA)	3	Not Shown
70-28348-01	SYSTEM MODULE/STIFFENER ASSEMBLY	3	2

INDEX BY DEC PART NUMBER

DECsystem 5900

PART NO.	DESCRIPTION	FIG NO.	ITEM NO.
70-28502-01	Cover Assembly, Top	2	4
70-28560-01	Bracket Assembly, Railmount (L.H. w/Pin)	2	10
70-28560-02	Bracket Assembly, Railmount (R.H. w/Pad)	2	11
70-28562-02	Screen Assembly, Bottom	2	6
70-28566-01	Panel Assembly, End	2	3
70-29337-02	Weldment, Front Door	7	1
70-29339-01	Grill Assembly, Door, 300 mm	7	3
70-29339-01	Grill Assembly, Door	8	2
70-29339-05	Grill Assembly, Door, 150 mm	7	2
70-29354-02	DOOR ASSEMBLY, FRONT	2	1
70-29354-02	DOOR ASSEMBLY, FRONT	7	N/A
70-29363-01	Weldment, Rear Door	8	1
70-29364-01	DOOR ASSEMBLY, REAR	8	N/A
70-29364-01	DOOR ASSEMBLY, REAR	2	2
70-29449-01	Chassis Weldment, Mass Storage	6	1
70-29452-01	Chassis Weldment, CPU	4	1
70-29454-01	DRAWER ASSEMBLY, CPU	3	N/A
70-29454-01	DRAWER ASSEMBLY, CPU	1	2
70-29459-01	CHASSIS ASSEMBLY, CPU	4	N/A
70-29459-01	CHASSIS ASSEMBLY, CPU	3	1
70-29460-01	CHASSIS ASSEMBLY, MASS STORAGE	6	N/A
70-29460-01	CHASSIS ASSEMBLY, MASS STORAGE	5	1
70-29461-01	Cover Assembly, Mass Storage	6	17
70-29462-01	Cover Assembly, Fan/Power Supply	3	41
70-29462-02	Cover Assembly, TCE/Power	4	3
70-29474-01	Kit, Accessories	1	Not Shown
70-29481-01	CABINET ASSEMBLY, DECsystem 5900	1	1
70-29481-01	CABINET ASSEMBLY, DECsystem 5900	2	N/A
70-29486-01	Chassis Assembly, TCE	4	2
74-40476-03	Shield, Rear Bulkhead KN03-AA	3	30
74-41143-05	Bulkhead Assembly, Blank	3	29
74-41542-01	Bracket, Top Front Hinge (L.H.)	2	9
74-41543-01	Bracket, Top Rear Hinge (L.H.)	2	8
74-41803-01	Latch, Door	2	14
74-42092-01	Bracket, Pawl Support Lock	8	10
74-43480-01	Shim, Hinge	7	10
74-43481-01	Shim, Top Screen Hinge	8	4
74-43842-01	Bracket, Half Height Drive	6	3
74-43843-01	Bracket, Drive Slide	6	9
74-43846-01	Clip, Spring	6	13
74-43847-01	Plate, Drive Mounting	6	4
74-43855-01	Plate, Blower Adaptor	3	20
74-43858-01	Isolator, AC Input EMI	4	9
74-43859-01	Divider, Air	4	6
74-43860-01	Deflector, Right Air	4	8
74-43916-01	Deflector, Left Air	4	7
74-43971-01	Cover, Cowel Support	4	4
74-43992-01	Bracket, Rear Chassis	6	2
74-44109-01	Chassis, Front CPU	4	5
74-44228-01	Handle	6	5
74-44229-01	Bracket, Restraint (R.H.)	1	23
74-44229-01	Bracket, Restraint (R.H.)	5	5
74-44229-01	Bracket, Restraint (R.H.)	3	15
74-44229-02	Bracket, Restraint (L.H.)	3	13

INDEX BY DEC PART NUMBER

DECsystem 5900

PART NO.	DESCRIPTION	FIG NO.	ITEM NO.
74-44229-02	Bracket, Restraint (L.H.)	1	22
74-44229-02	Bracket, Restraint (L.H.)	5	6
74-44230-01	Bracket, Controller Support	1	10
74-44239-01	Seal, Rear Cutout (L.H.)	2	7
74-44421-01	Panel, Full Height Filler	5	9
74-44422-01	Panel, Half Height Filler	5	10
74-44425-01	Panel, Drawer Filler	1	13
74-44557-01	Panel, Mass Storage Gap Filler	1	14
74-44559-01	Isolator, AC Extension	4	10
74-44613-01	Panel, Bottom Filler	1	15
74-44615-01	Panel, Removable Filler	5	7
74-44616-01	Nameplate, ID	1	16
74-44617-01	Bracket, Half Height Stop	6	7
74-44635-01	Panel, RX26 Filler	5	8
74-44668-01	Bracket, Shipping	5	4
74-44806-01	Bracket, Cable Arm Extension	1	12
90-00030-04	Rivet, Blind Dome	2	23
90-00030-66	Rivet, Blind	4	14
90-00030-89	Rivet, Blind	6	18
90-00038-19	Screw, Machine Pan Hd No. 6-32 x 1/4	3	28
90-00049-45	Screw, Sems Hex Hd No. 10-32 x 1/2	1	11
90-00049-45	Screw, Sems Hex Hd No. 10-32 x 1/2	3	14
90-00049-45	Screw, Sems Hex Hd No. 10-32 x 1/2	5	19
90-06039-01	Screw, Machine Pan Hd No. 8-32 x 1/2	5	17
90-06505-00	Rivet, Blind Dome	6	6
90-06560-00	Nut, Kep No. 6-32 x 5/16	1	17
90-06560-00	Nut, Kep No. 6-32 x 5/16	3	19
90-06563-00	Nut, Kep No. 8-32 x 11/32	3	21
90-06563-00	Nut, Kep No. 8-32 x 11/32	5	16
90-06565-00	Nut, Kep No. 10-32 x 3/8	3	34
90-06565-00	Nut, Kep No. 10-32 x 3/8	7	12
90-06565-00	Nut, Kep No. 10-32 x 3/8	8	6
90-06646-00	Washer, Flat	2	21
90-06662-00	Washer, Flat	3	23
90-07015-00	Grommet, Round Rubber	4	28
90-07651-00	Washer, Lock	3	35
90-07786-00	Nut, Kep No. 10-32 x 5/8	1	18
90-08007-01	Screw, Machine Pan Hd No. 10-32 x 1/4	3	16
90-08032-01	Screw, Machine Pan Hd No. 4-40 x 3/16	3	33
90-08451-12	Screw, Lock	3	31
90-09241-00	Rivet, Blind Dome	2	17
90-09617-00	Cable Tie	1	19
90-09971-02	Fastener, 1/4 Turn Slot	8	8
90-09971-07	Fastener, 1/4 Turn Slot	7	13
90-09971-10	Fastener, 1/4 Turn Washer	7	14
90-09971-10	Fastener, 1/4 Turn Washer	8	7
90-09988-05	Screw, Sems Hex Hd No. 10-32 x 1/2	2	16
90-09988-12	Screw, Sems Hex Hd No. 6-32 x 1/4	8	11
90-09988-14	Screw, Sems Hex Hd No. 1/4-20 x 3/4	2	15
90-09988-20	Screw, Sems Hex Hd No. 1/4-20 x 1 3/4	2	20
90-09988-21	Screw, Sems Hex Hd No. 1/4-20 x 2	2	19
90-10174-00	Screw, Sems Pan Hd No. 6-32 x 1/4	5	18
90-10174-00	Screw, Sems Pan Hd No. 6-32 x 1/4	6	8
90-10174-00	Screw, Sems Pan Hd No. 6-32 x 1/4	4	13

INDEX BY DEC PART NUMBER

DECsystem 5900

PART NO.	DESCRIPTION	FIG NO.	ITEM NO.
90-10556-11	Screw, Machine Pan Hd M4 x 6 mm	3	22
90-10681-01	Ring, Retainer	8	14
90-10681-01	Ring, Retainer	7	8
90-11139-01	Screw, Filister Hd No. 6-32 x 1/4	3	26
90-11187-03	Screw, Sems Pan Hd, M3 x 6 mm	5	20
90-11275-02	Pad, Foam	4	15
90-11292-01	Ring, Blower Inlet	3	18
H9C00-UA	Kit, 600 mm Trim	1	26
MSO2-CA	Module, Memory 32 MB	3	39
RRD42-AA	Drive Assembly, RRD42 Disk, 600 MB CDROM	5	23
RX26-AA	DRIVE ASSEMBLY, RX26 DISK, 2.8 MB	5	28
RZ58-E	Drive Assembly, RZ58 Disk, 1.3 GB	5	27
SZ29X-XA	ENCLOSURE ASSEMBLY, MASS STORAGE (Without Package Assembly)	5	N/A
SZ29X-XA	Enclosure Assembly, Mass Storage	1	24
SZ29X-XB	Enclosure Assembly, Mass Storage	1	24
SZ29X-XB	ENCLOSURE ASSEMBLY, MASS STORAGE (With Package Assembly)	5	N/A
TLZ04-AA	Drive Assembly, TLZ04 Tape, 1.2 GB DAT	5	26
TZ30-AX	Drive Assembly, TZ30 Tape, 95 MB	5	24
TZK10-AA	Drive Assembly, TZK10 Tape, 525 MB QIC	5	25

INDEX BY DEC PART DESCRIPTION

DECsystem 5900

DESCRIPTION	DEC PART NO.	FIG. NO.	ITEM NO.
Blower, Brushless DC Motor	12-37483-01	3	17
Bracket Assembly, Front (L.H. w/Pin)	70-26913-01	2	12
Bracket Assembly, Front (R.H. w/Pad)	70-26913-02	2	13
Bracket Assembly, Railmount (L.H. w/Pin)	70-28560-01	2	10
Bracket Assembly, Railmount (R.H. w/Pad)	70-28560-02	2	11
Bracket, Cable Arm Extension	74-44806-01	1	12
Bracket, Controller Support	74-44230-01	1	10
Bracket, Drive Slide	74-43843-01	6	9
Bracket, Half Height Drive	74-43842-01	6	3
Bracket, Half Height Stop	74-44617-01	6	7
Bracket, Pawl Support Lock	74-42092-01	8	10
Bracket, Rear Chassis	74-43992-01	6	2
Bracket, Restraint (L.H.)	74-44229-02	5	6
Bracket, Restraint (L.H.)	74-44229-02	3	13
Bracket, Restraint (L.H.)	74-44229-02	1	22
Bracket, Restraint (R.H.)	74-44229-01	5	5
Bracket, Restraint (R.H.)	74-44229-01	1	23
Bracket, Restraint (R.H.)	74-44229-01	3	15
Bracket, Shipping	74-44668-01	5	4
Bracket, Top Front Hinge (L.H.)	74-41542-01	2	9
Bracket, Top Rear Hinge (L.H.)	74-41543-01	2	8
Bulkhead Assembly, Blank	74-41143-05	3	29
Bumper, Round	12-37241-01	8	13
Bumper, Round	12-37241-01	7	7
CABINET ASSEMBLY, DECsystem 5900	70-29481-01	2	N/A
CABINET ASSEMBLY, DECsystem 5900	70-29481-01	1	1
Cable Assembly, AC Input Harness	17-03362-01	3	9
Cable Assembly, Internal SCSI	17-03366-01	5	12
Cable Assembly, P.S. Logic	17-03363-01	3	25
Cable Assembly, Power Switch	17-03360-01	5	13
Cable Assembly, Remote Sensor Power	17-00931-05	1	25
Cable Assembly, Remote Sensor to Power Contr.	17-00931-02	1	5
Cable Assembly, Remote Switch	17-03379-01	3	8
Cable Assembly, RX26 Internal	17-00285-00	5	Not Shown
Cable Assembly, RX26 Power	17-03400-01	5	Not Shown
Cable Assembly, SCSI (PMAZ)	17-02641-02	3	Not Shown
Cable Assembly, SCSI Jumper	17-03380-01	5	Not Shown
Cable Assembly, SCSI, Drawer to Drawer	17-03361-01	1	6
Cable Assembly, TCE Interconnect	17-03335-01	4	29
Cable Assembly, TCE Power Harness	17-03365-01	3	Not Shown
Cable Clamp	12-37658-01	1	8
Cable Tie	90-09617-00	1	19
Carrier, Cable Steel	12-26281-01	1	9
CHASSIS ASSEMBLY, CPU	70-29459-01	3	1
CHASSIS ASSEMBLY, CPU	70-29459-01	4	N/A
CHASSIS ASSEMBLY, MASS STORAGE	70-29460-01	6	N/A
CHASSIS ASSEMBLY, MASS STORAGE	70-29460-01	5	1
Chassis Assembly, TCE	70-29486-01	4	2
Chassis Weldment, CPU	70-29452-01	4	1
Chassis Weldment, Mass Storage	70-29449-01	6	1
Chassis, Front CPU	74-44109-01	4	5
Clip, Spring	74-43846-01	6	13
Clip, Wire Routing (Adhesive Backed)	12-21249-06	3	12
Clip, Wire Routing (Adhesive Backed)	12-21249-06	1	7

INDEX BY DEC PART DESCRIPTION

DECsystem 5900

DESCRIPTION	DEC PART NO.	FIG. NO.	ITEM NO.
Connector, Power Receptacle 6A 250V	12-17874-03	3	11
Controller, Power 16A 240V	30-35415-02	1	3
Controller, Power 24A 120V	30-35415-01	1	3
Cover Assembly, Fan/Power Supply	70-29462-01	3	41
Cover Assembly, Mass Storage	70-29461-01	6	17
Cover Assembly, TCE/Power	70-29462-02	4	3
Cover Assembly, Top	70-28502-01	2	4
Cover, Cowel Support	74-43971-01	4	4
Deflector, Left Air	74-43916-01	4	7
Deflector, Right Air	74-43860-01	4	8
Divider, Air	74-43859-01	4	6
DOOR ASSEMBLY, FRONT	70-29354-02	7	N/A
DOOR ASSEMBLY, FRONT	70-29354-02	2	1
DOOR ASSEMBLY, REAR	70-29364-01	2	2
DOOR ASSEMBLY, REAR	70-29364-01	8	N/A
Door Catch, Magnetic Snap-In	12-12908-01	7	9
DRAWER ASSEMBLY, CPU	70-29454-01	1	2
DRAWER ASSEMBLY, CPU	70-29454-01	3	N/A
Drive Assembly, RRD42 Disk, 600 MB CDROM	RRD42-AA	5	23
DRIVE ASSEMBLY, RX26 DISK, 2.8 MB	RX26-AA	5	28
Drive Assembly, RZ57 Disk, 1.0 GB (HDA)	29-28158-01	5	27
Drive Assembly, RZ57 Disk, 1.0 GB Drive Module	29-28159-01	5	27
Drive Assembly, RZ58 Disk, 1.3 GB	RZ58-E	5	27
Drive Assembly, TLZ04 Tape, 1.2 GB DAT	TLZ04-AA	5	26
Drive Assembly, TZ30 Tape, 95 MB	TZ30-AX	5	24
Drive Assembly, TZK10 Tape, 525 MB QIC	TZK10-AA	5	25
ENCLOSURE ASSEMBLY, MASS STORAGE (With Package Assembly)	SZ29X-XB	5	N/A
ENCLOSURE ASSEMBLY, MASS STORAGE (Without Package Assembly)	SZ29X-XA	5	N/A
Enclosure Assembly, Mass Storage	SZ29X-XA	1	24
Enclosure Assembly, Mass Storage	SZ29X-XB	1	24
Fastener, 1/4 Turn Slot	90-09971-02	8	8
Fastener, 1/4 Turn Slot	90-09971-07	7	13
Fastener, 1/4 Turn Washer	90-09971-10	8	7
Fastener, 1/4 Turn Washer	90-09971-10	7	14
Foam, Filter	12-13121-36	7	4
Foam, Filter	12-13121-37	7	6
Foam, Filter	12-13121-35	7	5
Foam, Filter	12-13121-35	8	3
Frame Assembly	70-26919-01	2	5
Grill Assembly, Door	70-29339-01	8	2
Grill Assembly, Door, 150 mm	70-29339-05	7	2
Grill Assembly, Door, 300 mm	70-29339-01	7	3
Grommet, Caterpillar	12-25469-01	6	15
Grommet, Round Rubber	90-07015-00	4	28
Handle	74-44228-01	6	5
Hinge, Pin (L.H.)	12-34975-03	8	5
Hinge, Pin (L.H.)	12-34975-01	7	11
Isolator, AC Extension	74-44559-01	4	10
Isolator, AC Input EMI	74-43858-01	4	9
Isolator, Shock	12-32626-01	3	24

INDEX BY DEC PART DESCRIPTION

DECsystem 5900

DESCRIPTION	DEC PART NO.	FIG. NO.	ITEM NO.
KERNEL ASSEMBLY, DECsystem 5900	N/A	1	N/A
Kit, Accessories	70-29474-01	1	Not Shown
Kit, Chassis Slide Mounting Bracket	22-01563-01	5	3
Kit, 600 mm Trim	H9C00-UA	1	26
Label, "DECsystem 5900" (U.K.)	36-34565-04	1	20
Label, "DECsystem 5900" (U.K.)	36-34565-06	1	20
Label, "DECsystem 5900" (U.S.)	36-34565-03	1	20
Label, "DECsystem 5900" (U.S.)	36-34565-05	1	20
Label, "EMI, Class A"	36-33285-01	1	21
Label, "Warning Cabinet Stabilizer"	36-37532-01	2	22
Label, CPU Jumper Removal Illustration	36-37631-01	4	17
Label, CPU Secondary On/Off	36-37628-01	4	23
Label, CPU Serial Number (U.K.)	36-34565-08	3	36
Label, CPU Serial Number (U.S.)	36-34565-07	3	36
Label, CPU Slide Release, Left/Right	36-37534-01	4	22
Label, Device ID Numbers	36-37630-01	5	22
Label, Ground Symbol	36-12680-02	4	19
Label, Memory Configuration Illustration	36-37627-01	4	16
Label, Regulatory, CPU Bulkhead	36-37533-01	4	18
Label, Regulatory, Mass Storage/CPU	36-37662-01	4	20
Label, Serial, Mass Storage (U.K.)	36-34565-10	5	21
Label, Serial, Mass Storage (U.S.)	36-34565-09	5	21
Label, System Shipping Restraint	36-37632-01	6	19
Label, Warning, CPU Fan	36-37535-01	4	21
Latch, Door	74-41803-01	2	14
Latch, Pawl Type	12-34116-02	8	9
Latch, Pawl Type	12-34116-01	7	15
Model 240TB-A2, 64 MB 120V	240TB-A2	1	N/A
Model 240TB-A3, 64 MB 240V	240TB-A3	1	N/A
Module, 40 MHZ CPU KN03-GA	54-20627-01	3	3
Module, CPU Power Supply Distribution	54-21333-01	3	6
Module, FDI	54-20764-02	5	Not Shown
Module, Memory 32 MB	MSO2-CA	3	39
Module, NVRAM 1 MB	54-20948-01	3	37
Module, System KN03A-AA	54-20617-01	3	2
Module, TCE Option (Interfaces TCE to TURBOchannel)	54-20623-01	3	38
Module, TURBOchannel Extender	54-20625-01	3	40
Nameplate, ID	74-44616-01	1	16
Nut, Kep No. 10-32 x 3/8	90-06565-00	7	12
Nut, Kep No. 10-32 x 3/8	90-06565-00	3	34
Nut, Kep No. 10-32 x 3/8	90-06565-00	8	6
Nut, Kep No. 10-32 x 5/8	90-07786-00	1	18
Nut, Kep No. 6-32 x 5/16	90-06560-00	3	19
Nut, Kep No. 6-32 x 5/16	90-06560-00	1	17
Nut, Kep No. 8-32 x 11/32	90-06563-00	5	16
Nut, Kep No. 8-32 x 11/32	90-06563-00	3	21
Package Assembly	37-01348-01	5	Not Shown
Package Assembly	37-01309-03	1	Not Shown
Package Assembly	37-01309-02	2	Not Shown
Pad, Foam	90-11275-02	4	15
Panel Assembly, End	70-28566-01	2	3
Panel, Bottom Filler	74-44613-01	1	15
Panel, Drawer Filler	74-44425-01	1	13

INDEX BY DEC PART DESCRIPTION
DECsystem 5900

DESCRIPTION	DEC PART NO.	FIG. NO.	ITEM NO.
Panel, Full Height Filler	74-44421-01	5	9
Panel, Half Height Filler	74-44422-01	5	10
Panel, Mass Storage Gap Filler	74-44557-01	1	14
Panel, Removable Filler	74-44615-01	5	7
Panel, RX26 Filler	74-44635-01	5	8
Plate, Blower Adaptor	74-43855-01	3	20
Plate, Drive Mounting	74-43847-01	6	4
Plate, Strike	12-37240-01	2	18
Power Cord, 15A (9 Ft.)	17-00442-19	1	4
Power Harness Assembly, CPU +5V	17-03364-01	3	10
Power Supply Assembly, 244W	30-32506-03	3	5
Power Supply, 400W, 12V	30-36340-01	5	2
Receptacle, Compact 1/4 Turn	12-33963-10	4	12
Receptacle, Compact 1/4 Turn	12-33963-10	6	12
Ring, Blower Inlet	90-11292-01	3	18
Ring, Retainer	90-10681-01	8	14
Ring, Retainer	90-10681-01	7	8
Rivet, Blind	90-00030-89	6	18
Rivet, Blind	90-00030-66	4	14
Rivet, Blind Dome	90-09241-00	2	17
Rivet, Blind Dome	90-00030-04	2	23
Rivet, Blind Dome	90-06505-00	6	6
Screen Assembly, Bottom	70-28562-02	2	6
Screw, Filister Hd No. 6-32 x 1/4	90-11139-01	3	26
Screw, Lock	90-08451-12	3	31
Screw, Machine Pan Hd M4 x 6 mm	90-10556-11	3	22
Screw, Machine Pan Hd No. 10-32 x 1/4	90-08007-01	3	16
Screw, Machine Pan Hd No. 4-40 x 3/16	90-08032-01	3	33
Screw, Machine Pan Hd No. 6-32 x 1/4	90-00038-19	3	28
Screw, Machine Pan Hd No. 8-32 x 1/2	90-06039-01	5	17
Screw, Sems Hex Hd No. 1/4-20 x 1 3/4	90-09988-20	2	20
Screw, Sems Hex Hd No. 1/4-20 x 2	90-09988-21	2	19
Screw, Sems Hex Hd No. 1/4-20 x 3/4	90-09988-14	2	15
Screw, Sems Hex Hd No. 10-32 x 1/2	90-00049-45	3	14
Screw, Sems Hex Hd No. 10-32 x 1/2	90-00049-45	1	11
Screw, Sems Hex Hd No. 10-32 x 1/2	90-00049-45	5	19
Screw, Sems Hex Hd No. 10-32 x 1/2	90-09988-05	2	16
Screw, Sems Hex Hd No. 6-32 x 1/4	90-09988-12	8	11
Screw, Sems Pan Hd No. 6-32 x 1/4	90-10174-00	4	13
Screw, Sems Pan Hd No. 6-32 x 1/4	90-10174-00	6	8
Screw, Sems Pan Hd No. 6-32 x 1/4	90-10174-00	5	18
Screw, Sems Pan Hd, M3 x 6 mm	90-11187-03	5	20
Seal, Rear Cutout (L.H.)	74-44239-01	2	7
Shield, EMI/RFI, Finger Contact	12-37853-03	4	26
Shield, EMI/RFI, Finger Contact	12-37853-01	4	24
Shield, EMI/RFI, Finger Contact	12-26489-02	4	11
Shield, EMI/RFI, Finger Contact	12-37853-04	4	27
Shield, EMI/RFI, Finger Contact	12-16007-11	6	14
Shield, EMI/RFI, Finger Contact	12-37207-01	6	16
Shield, EMI/RFI, Finger Contact	12-37853-02	4	25
Shield, EMI/RFI, Finger Contact (2 Inch)	12-16007-13	6	10
Shield, EMI/RFI, Finger Contact (6 1/2 Inches)	12-16007-14	6	11

INDEX BY DEC PART DESCRIPTION

DECsystem 5900

DESCRIPTION	DEC PART NO.	FIG. NO.	ITEM NO.
Shield, Rear Bulkhead KN03-AA	74-40476-03	3	30
Shim, Hinge	74-43480-01	7	10
Shim, Top Screen Hinge	74-43481-01	8	4
Slide Latch Assembly	12-27576-02	3	32
Slide, Non-Pivoting Chassis	12-37218-01	3	4
Standoff, Hex 3/16	12-33793-01	3	27
Switch, Low Power, Panel Mount, Rocker	12-24160-02	3	7
Switch, Rocker LED Indicator, 5V	12-37121-01	5	14
SYSTEM MODULE/STIFFENER ASSEMBLY	70-28348-01	3	2
Terminator, External SCSI	12-37004-01	5	15
Terminator, Internal SCSI	12-36929-01	5	Not Shown
TURBOchannel to FDDI Option (DEFZA-AA)	70-26944-01	3	Not Shown
TURBOchannel to FDDI-Copper Option (DEFZA-CA)	70-22710-01	3	Not Shown
TURBOchannel to SCSI Option (PMAZ)	54-19876-01	3	Not Shown
TURBOchannel to Thickwire Option (PMAD)	54-19874-01	3	Not Shown
Washer, Flat	90-06646-00	2	21
Washer, Flat	90-06662-00	3	23
Washer, Lock	90-07651-00	3	35
Washer, Nylon Shoulder	12-33964-01	8	12
Washer, Nylon Shoulder	12-33964-01	7	16
Weldment, Front Door	70-29337-02	7	1
Weldment, Rear Door	70-29363-01	8	1
Wire Harness Assembly, Disk Power	17-03359-01	5	11

READER'S COMMENTS

DECsystem 5900
Illustrated Parts Breakdown
EK-D590A-IP-001

1. How did you use this manual? (Circle your response.)

- (a) Installation (c) Maintenance (e) Training
(b) Operation/Use (d) Programming (f) Other (Please specify) _____

2. Did the manual meet your needs? Yes ☐ No ☐ Why? _____

3. Please rate the manual on the following categories. (Circle your response.)

	Excellent	Good	Fair	Poor	Unacceptable
Accuracy	5	4	3	2	1
Clarity	5	4	3	2	1
Completeness	5	4	3	2	1
Illustrations, examples	5	4	3	2	1
Overall ease of use	5	4	3	2	1
Table of Content, Index	5	4	3	2	1

4. What things did you like *most* about this manual? _____

5. What things did you like *least* about this manual? _____

6. Please list and describe any errors you found in the manual.

Page	Description/Location of Error
_____	_____
_____	_____
_____	_____
_____	_____

7. Which of the following most clearly describes your job ? (Circle your response.)

- (a) Administrative Support (e) System Manager (i) Education/Trainer
(b) Manager/Supervisor (f) Computer Operator (j) Sales/Marketing
(c) Scientist/Engineer (g) Software Support (k) Other (Please specify) _____
(d) Programmer/Analyst (h) Hardware Support

OPTIONAL INFORMATION

Name _____ Job Title _____
Street _____ Company _____
City _____ Department _____
State/Country _____ Telephone Number _____
Postal (ZIP) Code _____ Date _____

THANK YOU FOR YOUR COMMENTS AND SUGGESTIONS.

Please do not use this form to order manuals. Contact your representative at Digital Equipment Corporation or (in the USA) call our DECdirect™ department at this toll-free number : 800-344-4825