

# ILLUSTRATED PARTS BREAKDOWN

# VAXft SYSTEM MODELS 310 and 410

## ILLUSTRATED PARTS BREAKDOWN (IPB)

The IPB is used to identify a part and its location in a hardware product. The document references specific item numbers in the associated parts list.

### HOW TO USE THE IPB

1. Locate the figure containing the item of interest.
2. Locate the number (callout) of the item of interest.
3. Locate that item number in the associated parts list.

### FORMAT

Each IPB is generally organized based on its first figure. All other assemblies and subassemblies are referenced from this figure. Each figure contains numeric callouts of all major parts (items).

### PARTS LIST

Each parts list contains the following:

**Figure and Item No.** – Lists the figure number and its referenced numeric callout

**Description** – Presents the name and a brief description of the item. A single asterisk (\*) preceding the description

denotes item is a subassembly to its referenced figure. A double asterisk (\*\*) preceding the description indicates that this item is subordinate to the preceding single asterisk item.

**DEC Part No.** – Lists the Digital/Vendor part number. The letter in the column heading indicates the current revision level of the Engineering Drawing for the referenced figure.

**ECO Cut-In** – Lists the top assembly drawing number and revision level at first printing. All additional revisions to an item are listed in this column.

**Used On Code** – Lists letters referring to the product variation assigned in Figure 1. When this column is blank, the item is used in all variations.

**Ref Fig No.** – Lists a cross reference between figures within the IPB.

### PART NUMBER/PART DESCRIPTION INDEX SECTION

Lists items by part number numerically, and description alphabetically. Items are also referenced to a location within the IPB by figure and item number.

## ECO/REVISION HISTORY

OTHER IPB  
MANUALS  
REFERENCED

FIGURE NO.	ASSEMBLY	INITIAL LEVEL	CURRENT LEVEL	PRINTING DATE	OTHER IPB MANUALS REFERENCED
1	5XXAA	00000	00000	30-JAN-92	
2	52XBA	00002	00002		
3	55AAA	00000	00000		
4	55BAA	00000	00000		
5	BA22A	00002	00002		
6	70-25598	00001	00001		
7	H407	00001	00001		
8	H7233	00004	00004		
9	70-26865	00000	00000		
10	70-27877	00000	00000		
11	70-26102	00001	00001		
12	70-27871	00000	00000		
13	70-27872	00001	00001		
14	70-27896	00000	00000		
15	BA22D	00001	00001		
16	BA22B	00002	00002		
17	70-26105	00001	00001		
18	70-26107	00000	00000		
19	70-28923	00000	00000		
20	TF70C-JA	00001	00001		
21	RF31-JA	00002	00002		
22	RF31-KA	00003	00003		
23	RF72-JA	00002	00002		
24	RF72-KA	00002	00002		

Digital Equipment Corporation reserves the right, without notice, to make substitutions and modifications in the specifications of products documented in this manual and further reserves the right to withdraw any of these products from the market without notice.

Digital Equipment Corporation is not responsible for errors which may appear in the technical description (including illustrations and photographs) of the products covered by this manual.

None of the descriptions contained in this manual imply the granting of any license whatsoever to make, use or sell equipment constructed in accordance therewith.

Restricted Rights: Use, duplication or disclosure by the U.S. Government is subject to restrictions as set forth in subparagraph (c) (1) (ii) of the Rights in Technical Data and Computer Software clause at DFARS 252.227-2713.

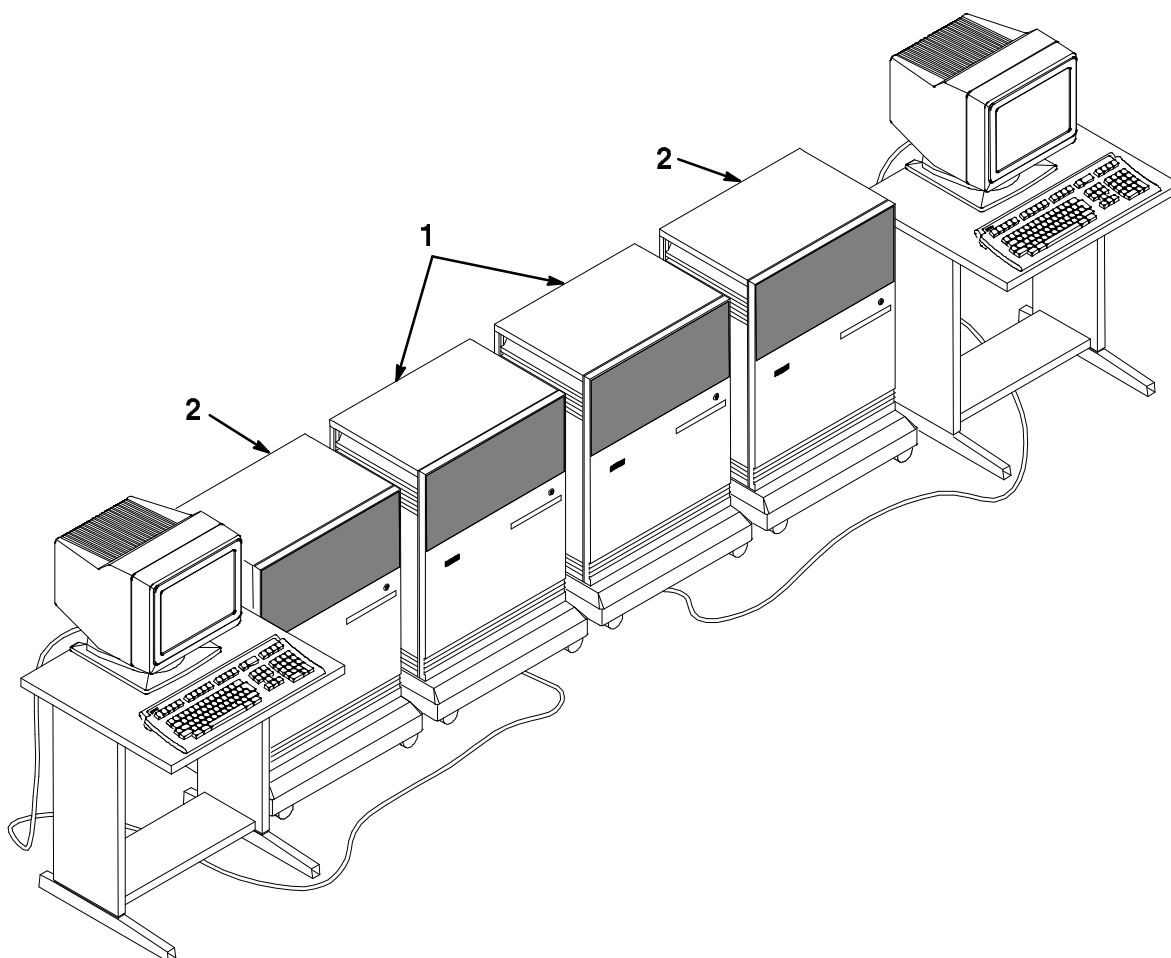
Copyright © 1992 by Digital Equipment Corporation. All rights reserved.  
Printed in U.S.A.

The postage-paid READER'S COMMENTS form on the last page of this document requests your critical evaluation to assist us in preparing future documentation.

The following are trademarks of Digital Equipment Corporation :

---

DEC, DECdirect, DECUS, PDP, UNIBUS, VAX, VAXft and the DIGITAL logo.

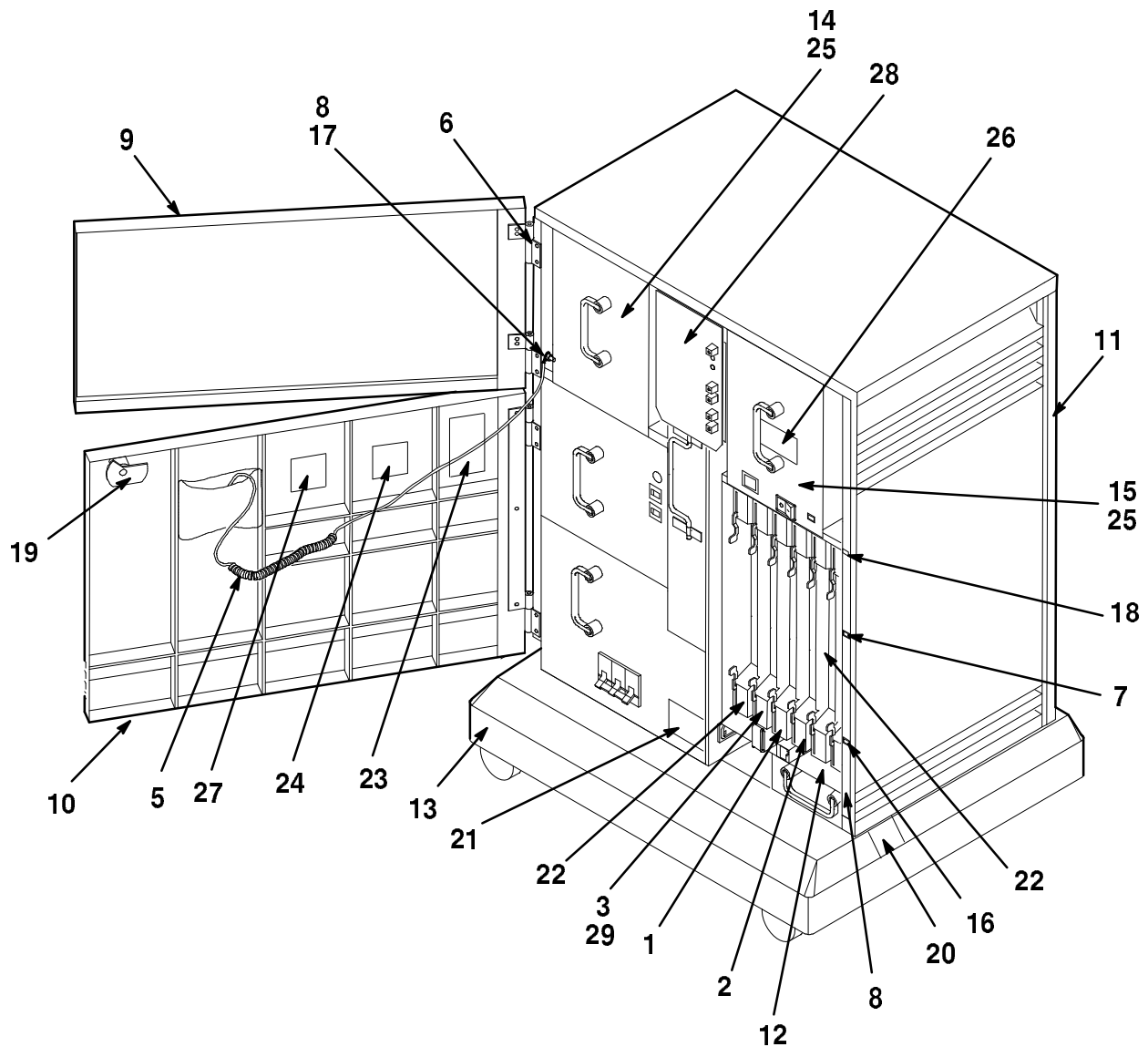


**NOTE : KEYBOARD, MONITOR AND STAND ARE NOT PART OF THIS ASSEMBLY. SHOWN FOR REFERENCE ONLY.**

FTV3410-01-IL

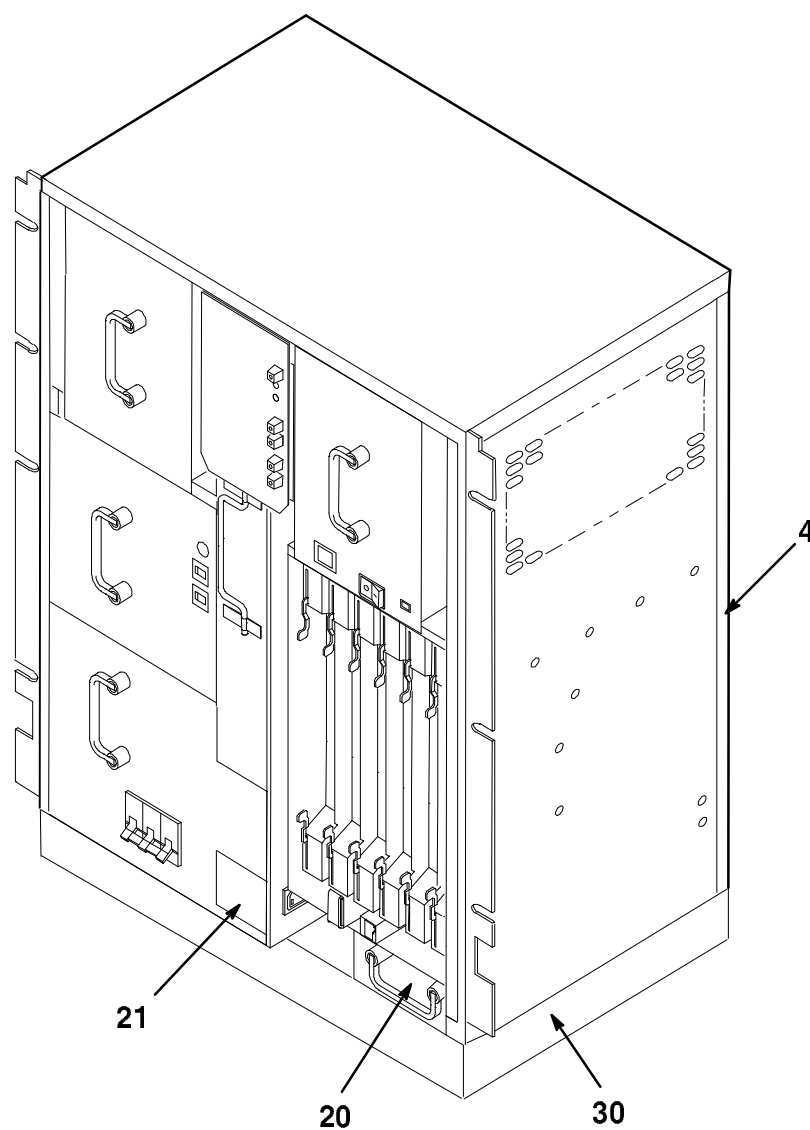
***Figure 1. VAXft System, Models 310 and 410***

FIG.& ITEM NO.	DESCRIPTION	<sup>A</sup> DEC PART NO.	ECO CUT-IN 5XXAA 00000	USED ON CODE	REF FIG NO.
1-	VAXft SYSTEM, MODELS 310 AND 410				
	Code A - Used on 52AAA-AX Model 310 Pedestal (120/240V)	52AAA-AX		A	
	Code B - Used on 52BAA-XA Model 310 Rack Mount (120/240V)	52BAA-XA		B	
	Code C - Used on 55AAA-AA Model 410 Pedestal (120/240V)	55AAA-AA		C	
	Code D - Used on 55BAA-AA Model 410 Rack Mount (120/240V)	55BAA-AA		D	
	Code E - Used on 55BAA-AN Model 410 Rack Mount (48V)	55BAA-AN		E	
1	*KERNEL, CPU Model 310 Pedestal (120/240V)	52XBA-AA		A	2
	*KERNEL, CPU Model 310 Rack Mount(120/240V)	52XBA-BA		B	2
	*KERNEL, CPU Model 410 Pedestal (120/240V)	55AAA-XA		C	3
	*KERNEL, CPU Model 410 Rack Mount(120/240V)	55BAA-XA		D	4
	*KERNEL, CPU Model 410 Rack Mount (48V)	55BAA-XN		E	4
2	*SUBSYSTEM, DISK EXPANDER PEDESTAL	BA22D-AA		AC	15
	*SUBSYSTEM, DISK EXPANDER RACK MOUNT	BA22D-BA		BD	15
	CABLES (Not Shown)				
	*Connection, Base-To-Base	BA22A-XA			
	*Adaptor, Fault Tolerant Ethernet/DSSI	KFE52-AA			



FTV3410-02-IL

**Figure 2. Kernel, CPU Model 310 Pedestal (Sheet 1 of 2)**



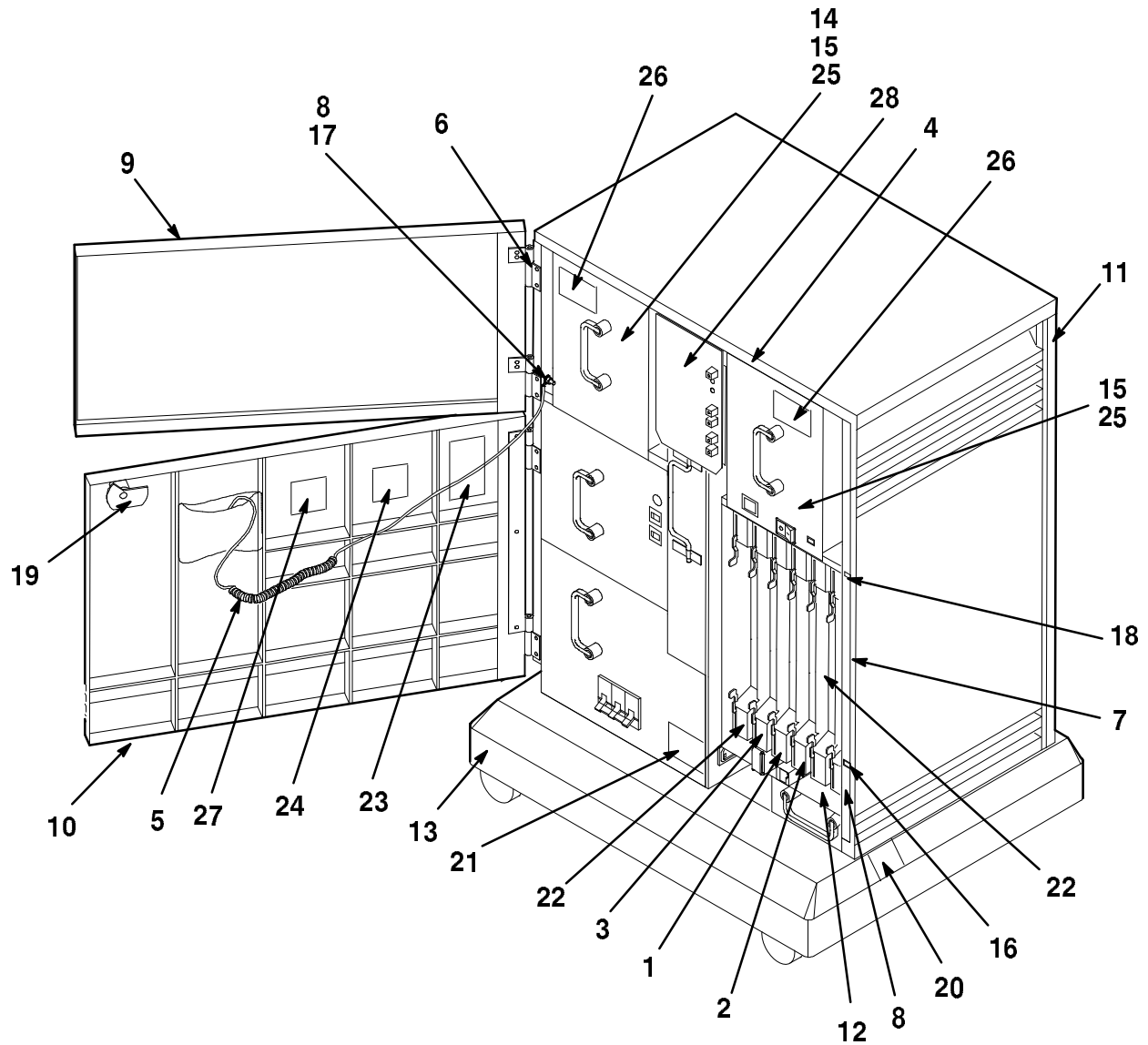
FTV3410-02A-IL

**Figure 2. Kernal, CPU Model 310 Rack Mount (Sheet 2 of 2)**

FIG.& ITEM NO.	DESCRIPTION	DEC PART NO.	ECO CUT-IN 52XBA 00002	USED ON CODE	REF FIG NO.
2-	KERNEL, CPU MODEL 310 PEDESTAL (120/240V)	52XBA-AA		A	1
	KERNEL, CPU MODEL 310 RACK MOUNT (120/240V)	52XBA-BA		B	1
1	*Module, Fault Tolerant 60 NS Dual CPU	KA520-AA			
2	*Module, 32 MB ECC Single Memory 1 MB	MS520-BA			
3	*Adaptor, Fault Tolerant Ethernet/DSSI	KFE52-AA			
4	*CABINET ASSEMBLY, CPU (120/240V)	BA22A-A9		A	5
	*CABINET ASSEMBLY, CPU (120/240V)	BA22A-B9		B	5
5	*Cable Assembly, ESD Wrist Strap	12-24023-04			
6	*Bracket, Chassis Hinge	74-39354-02		A	
7	*Latch, Door	74-41933-01		A	
8	*Screw, Self-Tap Pan Hd No. 8-16 x 1/2	90-09800-08		A	
9	*DOOR ASSEMBLY, TOP	70-27871-01		A	12
10	*DOOR ASSEMBLY, LOWER	70-27872-01		A	13
11	*ENCLOSURE ASSEMBLY, SHELL	70-27896-01		A	14
12	*Connector, D-Sub 25 Position	12-15336-08			
13	*Cap Assembly	70-27905-01		A	
14	*CANISTER ASSEMBLY, TF70C	TF70C-JA			20
15	*CANISTER ASSEMBLY, RF31 Disk Drive	RF31-JA			21
	*CANISTER ASSEMBLY, RF72 Disk Drive	RF72-JA			23
16	*Catch Assembly, Door	90-09571-04		A	
17	*Washer, Flat	90-06664-00		A	
18	*Finger, Non-Snag Grounding	12-26922-01		A	
19	*Key, Plastic	12-17119-01		A	
20	*Label, "Pedestal BA22 USA"	36-27838-52		A	
	*Label, "Pedestal BA22 Canada"	36-27838-53		A	
	*Label, Summary Panel CPU	36-27838-54		B	
21	*Label, "Warning Equipment Rating (120/240V)"	36-17905-16			
22	*Module, Test 5200 VAXft Filler	T3999-AA			
23	*Label, Interconnect Diagram	36-32734-01			
24	*Label, Interconnect Description	36-32734-02			
25	*Canister Assembly, Disk Housing (Blank)	70-27929-01			
26	*Label, "Attention Preinstalled Software"	36-28979-01			
27	*Label, Interconnect Diagram	36-32734-03			
28	*Label, Summary Panel CPU	36-33149-01			
29	*Shunt, Dip 12 Position	12-18231-10			
30	*Cover, Base	74-41258-01		B	
	ITEMS (Not Shown)				
	*Cable Assembly	17-00811-05			
	*Cord, Power 9 Ft. 125V 15A	17-00083-23			
	*Label, Summary Panel CPU	36-30422-67			

**THIS PAGE INTENTIONALLY LEFT BLANK**

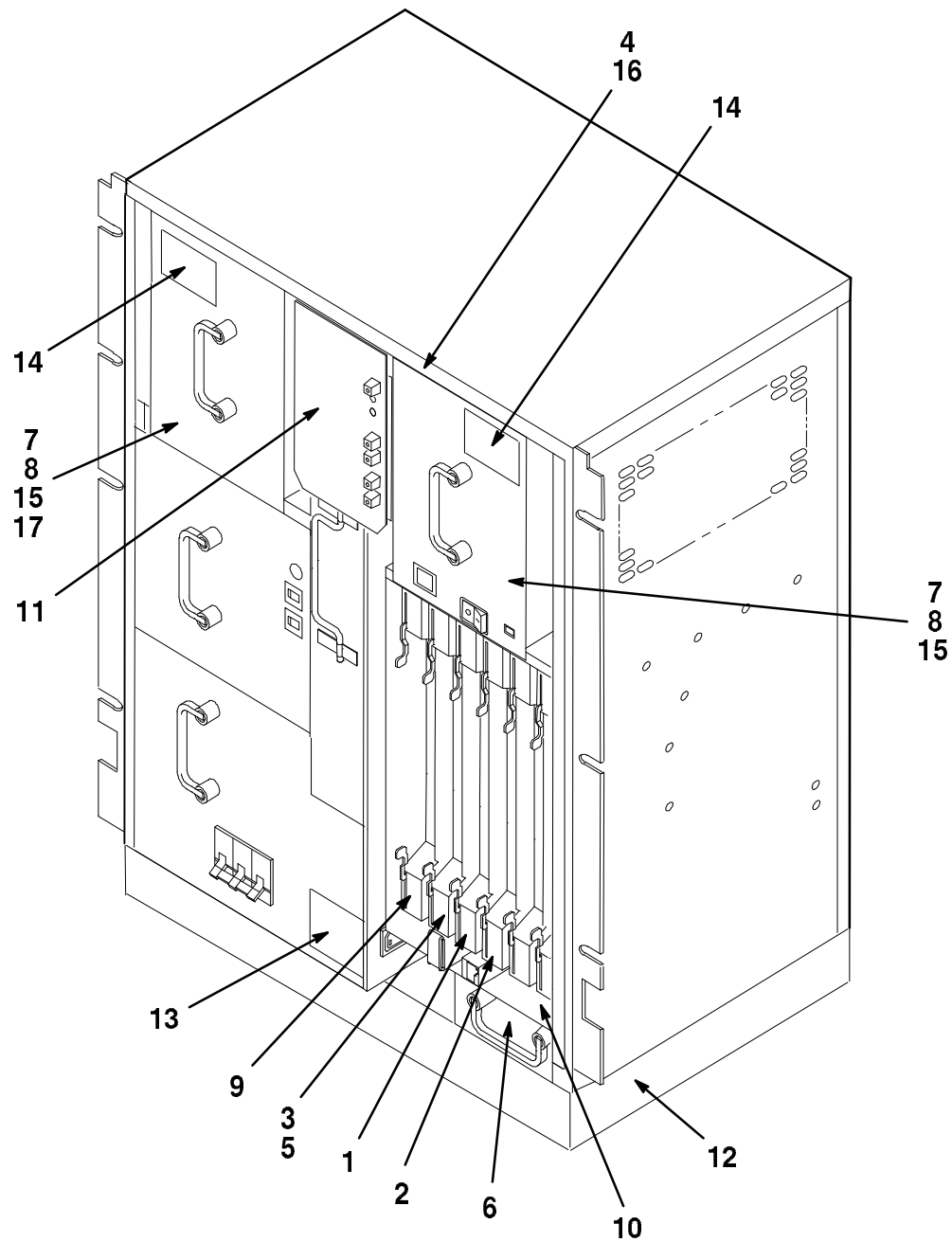




FTV3410-03-IL

**Figure 3. Kernel, CPU Model 410 Pedestal**

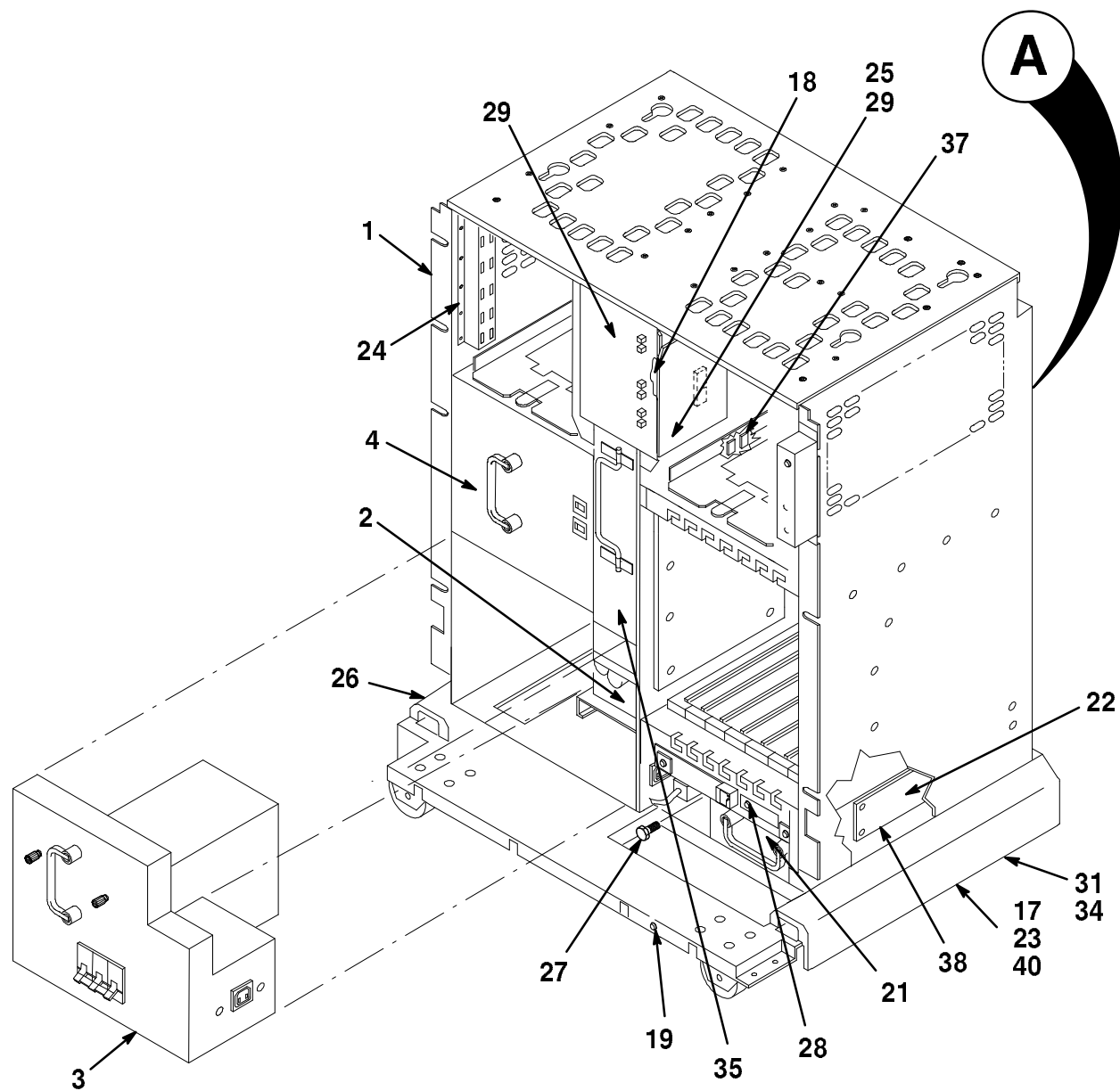
FIG.& ITEM NO.	DESCRIPTION	DEC PART NO. <sup>A</sup>	ECO CUT-IN 55AAA 00000	USED ON CODE	REF FIG NO.
3-	KERNEL, CPU MODEL 410 PEDESTAL (120/240V)	55AAA-XA		C	1
1	*Module, Fault Tolerant 60 NS Dual CPU	KA520-AA			
2	*Module, 32MB ECC Single Memory 1MB	MS520-BA			
3	*Adaptor, Fault Tolerant Ethernet/DSSI	KFE52-AA			
	*Shunt, Dip 12 Position	12-18231-10			
4	*CABINET ASSEMBLY, CPU (120/240V)	BA22A-A9			5
5	*Cable Assembly, ESD Wrist Strap	12-24023-04			
6	*Bracket, Chassis Hinge	74-39354-02			
7	*Latch, Door	74-41933-01			
8	*Screw, Self-Tap Pan Hd No. 8-16 x 1/2	90-09800-08			
9	*DOOR ASSEMBLY, TOP	70-27871-01			12
10	*DOOR ASSEMBLY, LOWER	70-27872-01			13
11	*ENCLOSURE ASSEMBLY, SHELL	70-27896-01			14
12	*Connector, D-Sub 25 Position	12-15336-08			
13	*Cap Assembly	70-27905-01			
14	*CANISTER ASSEMBLY, TF70C	TF70C-JA			20
15	*CANISTER ASSEMBLY, RF31 Disk Drive	RF31-JA			21
	*CANISTER ASSEMBLY, RF72 Disk Drive	RF72-JA			23
16	*Catch Assembly, Door	90-09571-04			
17	*Washer, Flat	90-06664-00			
18	*Finger, Non-Snag Grounding	12-26922-01			
19	*Key, Plastic	12-17119-01			
20	*Label, "Pedestal BA22 Canada"	36-27838-53			
	*Label, Summary Panel CPU	36-27838-54			
21	*Label, "Warning Equipment Rating (120/240V)"	36-17905-16			
22	*Module, Test 5200 VAXft Filler	T3999-AA			
23	*Label, Interconnect Diagram	36-32734-01			
24	*Label, Interconnect Description	36-32734-02			
25	*Canister Assembly, Disk Housing (Blank)	70-27929-01			
26	*Label, "Attention Preinstalled Software"	36-28979-01			
27	*Label, Interconnect Diagram	36-32734-03			
28	*Label, Summary Panel CPU	36-33149-01			
	ITEMS (Not Shown)				
	*Cable Assembly	17-00811-05			
	*Cord, Power 9 Ft. 125V 15A	17-00083-23			
	*Label, Summary Panel CPU	36-30422-67			



FTV3410-04-IL

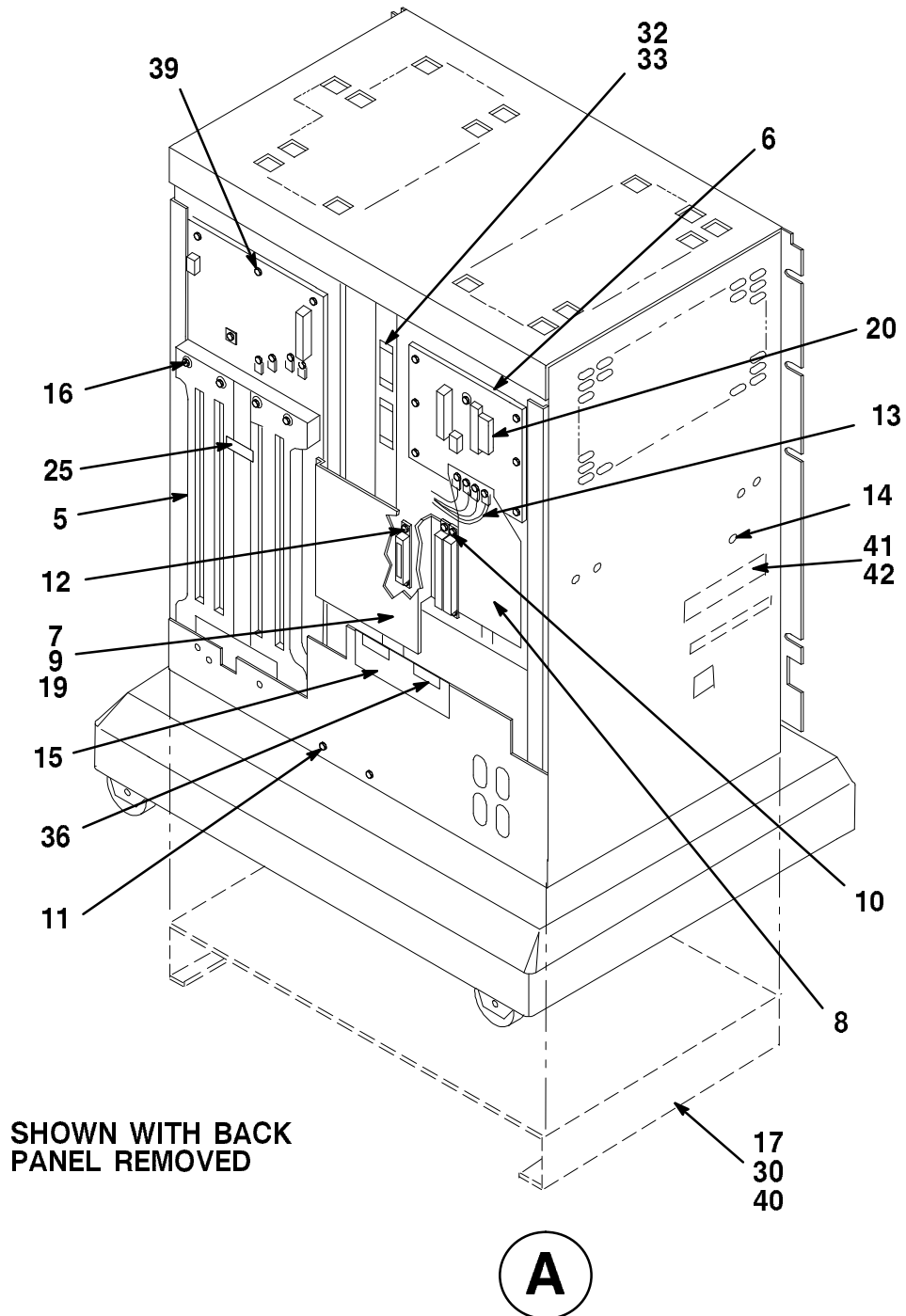
**Figure 4. Kernel, CPU Model 410 Rack Mount**

FIG.& ITEM NO.	DESCRIPTION	DEC PART NO. <sup>A</sup>	ECO CUT-IN 55BAA 00000	USED ON CODE	REF FIG NO.
4-	KERNEL, CPU MODEL 410 RACK MOUNT (120/240V)	55BAA-XA		D	1
	KERNEL, CPU MODEL 410 RACK MOUNT (48V)	55BAA-XN		E	1
1	*Module, Fault Tolerant 60 NS Dual CPU	KA520-AA			
2	*Module, 32MB ECC Single Memory 1MB	MS520-BA			
3	*Adaptor, Fault Tolerant Ethernet/DSSI	KFE52-AA			
4	*CABINET ASSEMBLY, CPU (120/240V)	BA22A-B9		D	5
5	*Shunt, Dip 12 Position	12-18231-10			
6	*Label, "Pedestal BA22 Canada"	36-27838-53			
7	*Canister Assembly, Disk Housing (Blank)	70-27929-01			
8	*CANISTER ASSEMBLY, RF72 Disk Drive	RF72-JA			23
9	*Module, Test 5200 VAXft Filler	T3999-AA			
10	*Connector, D-Sub 25 Position	12-15336-08			
11	*Label, Summary Panel CPU (48V)	36-33149-01			
12	*Cover, Base	74-41258-01			
13	*Label, "Warning Equipment Rating (120/240V)"	36-17905-16		D	
14	*Label, "Attention Preinstalled Software"	36-28979-01			
15	*CANISTER ASSEMBLY, RF31 Disk Drive	RF31-JA			21
16	*CABINET ASSEMBLY, CPU	BA22A-C6		E	5
17	*CANISTER ASSEMBLY, TF70C	TF70C-JA			20
	ITEMS (Not Shown)				
	*Cable Assembly, ESD Wrist Strap	12-24023-04			
	*Cable Assembly	17-00811-05			
	*Cord, Power 9 Ft. 125V 15A	17-00083-23			
	*Label, Interconnect Diagram	36-32734-03		D	
	*Label, Summary Panel CPU	36-30422-67			



FTV3410-05-IL

**Figure 5. Cabinet Assembly, CPU (Sheet 1 of 2)**



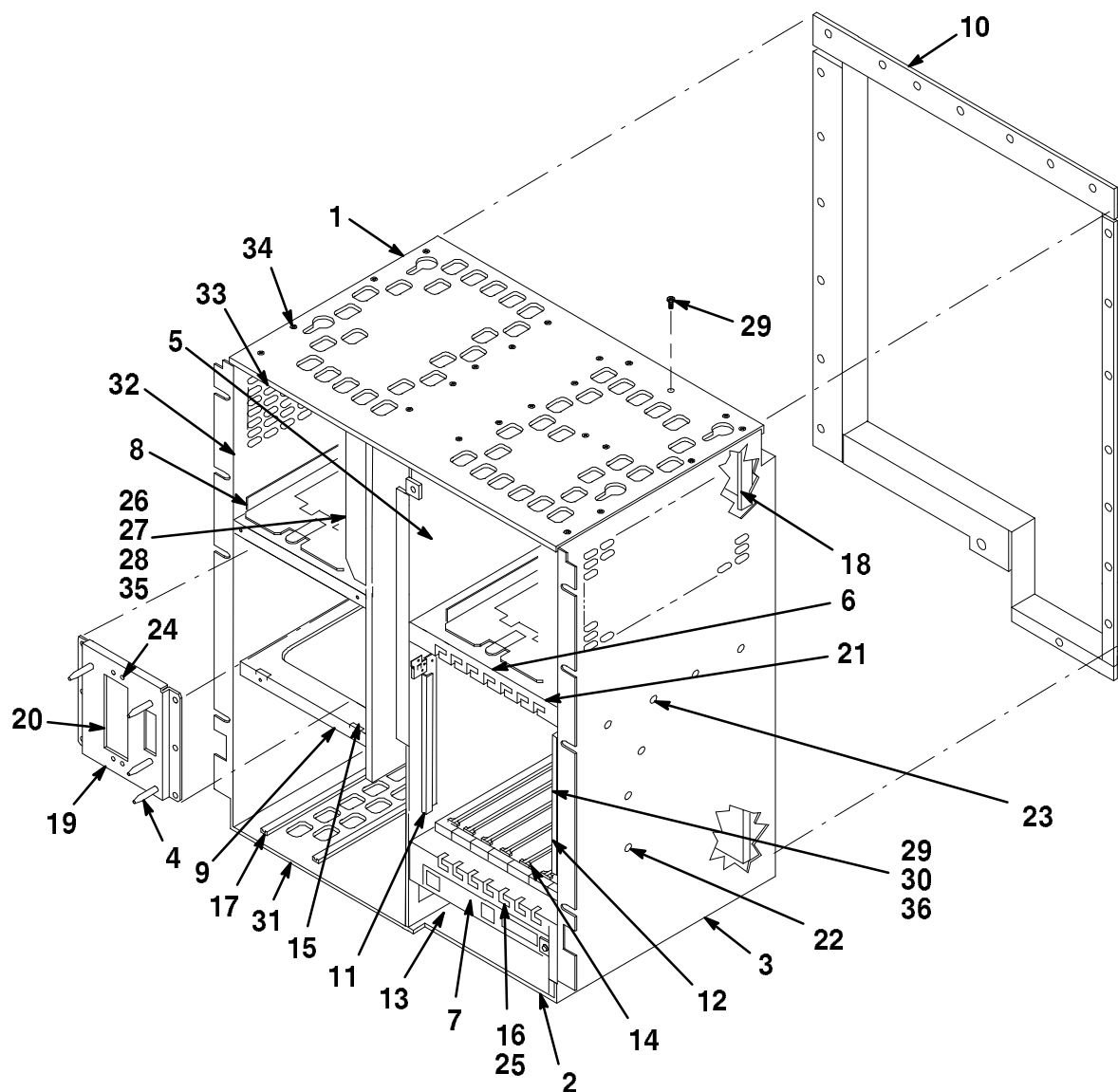
FTV3410-05A-IL

**Figure 5. Cabinet Assembly, CPU (Sheet 2 of 2)**

FIG.& ITEM NO.	DESCRIPTION	DEC PART NO. <sup>C</sup>	ECO CUT-IN BA22A 00002	USED ON CODE	REF FIG NO.
5-	CABINET ASSEMBLY, CPU (120/240V)	BA22A-A9		AC	2,3
	CABINET ASSEMBLY, CPU (120/240V)	BA22A-B9		BD	2,4
	CABINET ASSEMBLY, CPU (48V)	BA22A-C6		E	4
1	*FRAME ASSEMBLY, MAIN	70-25598-01			6
2	*Transformer, Power 50/60 Hz 42V DC/90V AC	16-28974-01		ABCD	
	*Cover Assembly, Battery (48V)	70-28974-01			
3	*BOX ASSEMBLY, AC INPUT (120V 50/60 Hz)	H407-A		ABCD	7
	*BOX ASSEMBLY, AC INPUT (48VDC 50/60 Hz)	H407-B		E	
4	*POWER SUPPLY ASSEMBLY, REGULATOR	H7233-AA			8
5	*BACKPLANE ASSEMBLY	70-27877-01			10
6	*Module, Backplane Drive	54-19260-01			
7	*Circuit, Power Flex	17-02175-01			
8	*Circuit, Power Flex	17-02176-01			
9	*Nut, Hex Ext Tooth Lockwasher 10-32	90-06565-00			
10	*Screw, Machine Pan Hd No. 6-32 x 1/2	90-06024-01			
11	*Screw, Sems Hex Hd No. 10-32 x 5/8	90-09988-17		ABCD	
12	*Screw, Machine Pan Hd No. 4-40 x 1/4	90-08301-01			
13	*Harness Assembly, 4 Conductor 10 AWG w/Ring	17-02687-01			
14	*Label, "TUV BG"	36-33131-01			
15	*Plate, Shield	74-41983-01			
16	*Screw, Sems Pan Hd No. 10-32 x 7/16	90-09282-00			
17	*Washer, Flat	90-06668-00		BD	
18	*Screw, Sems Pan Hd No. 6-32 x 7/16	90-09984-12		AC	
19	*Screw, Sems Pan Hd No. 6-32 x 3/8	90-09984-00			
20	*Connector, Filtered Terminal	12-28976-01			
21	*FAN ASSEMBLY	70-26102-01			11
22	*Module, Console Protection	54-19491-01			
23	*Plate, Right Deflector Base	74-39656-01		AC	
24	*Finger, Non-Snag Grounding	12-26922-01			
25	*Panel Assembly, Cover	70-28922-01			
26	*Plate, Left Deflector Base	74-39657-01		AC	
27	*Screw, Shoulder No. 8-32	12-27034-01			
28	*Screw, Machine No. 4-40 x 5/16	12-15243-00			
29	*Panel, Summary	74-40394-01			
30	*Base, Rackmount (Weldment)	70-28000-01		BD	
	*Base, Rackmount (Weldment)	70-28000-02		E	
31	*Base Assembly	70-27904-01		AC	
32	*Clamp, Adhesive Mount Cable	12-15911-00			
33	*Screw, Machine Flat Hd No. 6-32 x 5/16	90-08404-02			
34	*Screw, Self-Tap Pan Hd No. 10 x 3/8	90-00062-38		AC	
35	*Battery Assembly, 48V 8A Lead Acid	30-29639-01		ABCD	
36	*Shield, EMI/RFI Strip Clip-On	12-22380-17			

FIG.& ITEM NO.	DESCRIPTION	<sup>C</sup> DEC PART NO.	ECO CUT-IN BA22A 00002	USED ON CODE	REF FIG NO.
5-					
37	* Cable Tie	90-07032-00			
38	*Screw, Sems Hex Hd No. 6-32 x 1/4	90-09988-12			
39	*Screw, Sems Hex Hd No. 10-32 x 1/2	90-09988-05			
40	*Screw, Sems Pan Hd No. 10-32 x 3/4	90-09228-10		BD	
41	*Label, "Serial/Power, Universal, USA UR/CSA"	36-17674-46			
42	*Label, "Serial/Power Universal"	36-17574-58			
	ITEMS (Not Shown)				
	*Cable Tie	90-07031-00			
	*Screw, Machine No. 10-32 x 1/4	90-10971-01			
	LABEL (Not Shown)				
	*Label, Ground Symbol Black	36-12680-00			
	CABLE/HARNESS ASSEMBLIES (Not Shown)				
	*Cable Assembly, Jumper	17-02854-01			
	*Cable Assembly, Flat 14 Conductor	17-02121-01			
	*Cable Assembly, Flat 50 Conductor	17-02122-01			
	*Cable Assembly, 34 Conductor Flat	17-02120-01			
	*Cable Assembly, Flat 24 Conductor	17-02254-01			
	*Harness Assembly, Wire 12 Conductor 22 AWG	17-02266-01			
	*Harness Assembly, Wire 9 Conductor 22 AWG	17-02258-01			
	*Harness Assembly, Wire 16 Connector 22 AWG	17-02435-01			

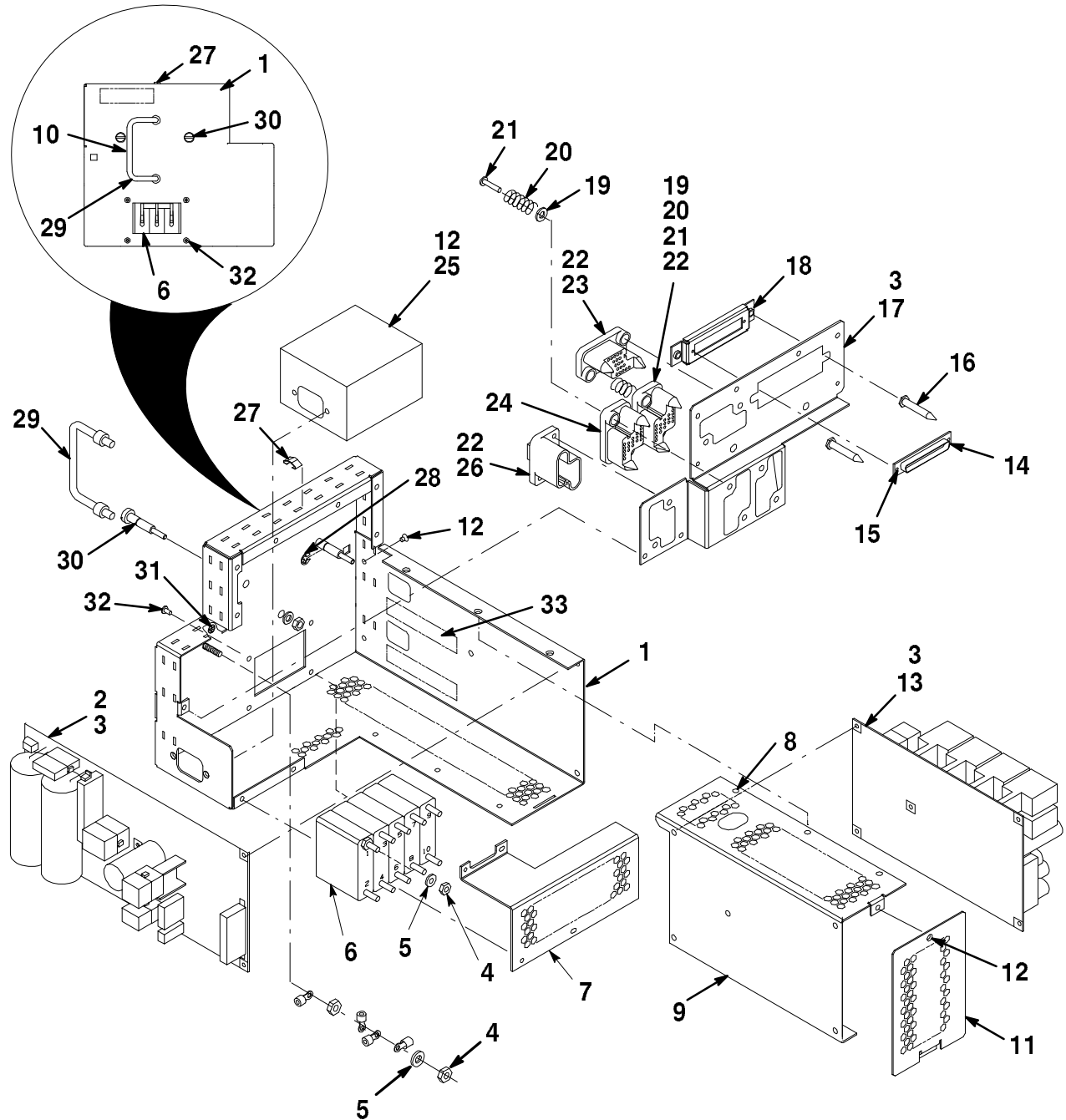




FTV3410-06-IL

**Figure 6. Frame Assembly, Main**

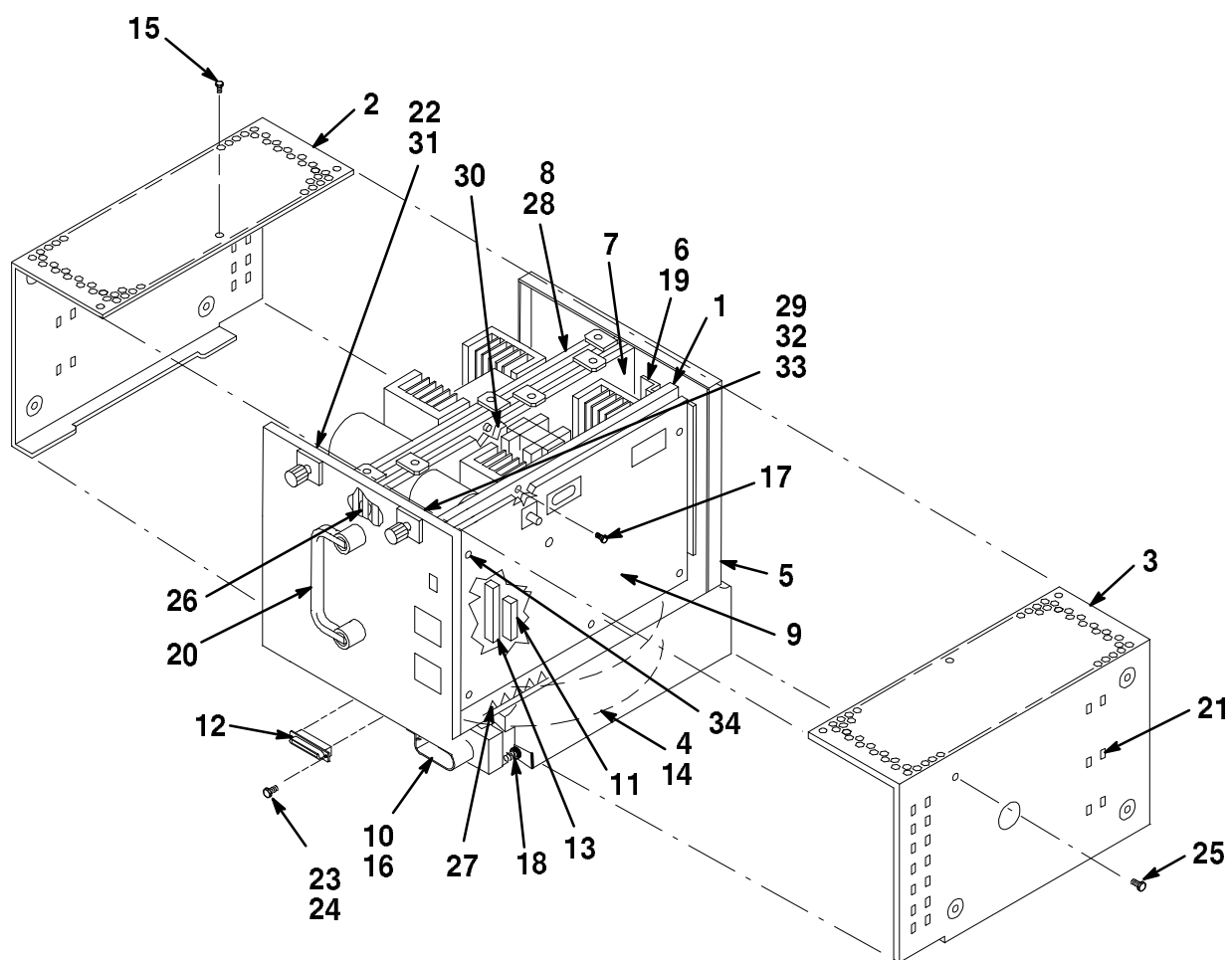
FIG.& ITEM NO.	DESCRIPTION	<sup>B</sup> DEC PART NO.	ECO CUT-IN 70-25598 00001	USED ON CODE	REF FIG NO.
6-	FRAME ASSEMBLY, MAIN	70-25598-01			5
1	*Cover, Top	74-36403-01			
2	*Panel, Bottom (Weldment)	70-26149-01			
3	*Panel, Right Side	74-36405-01			
4	*Pin, Guide	74-36406-01			
5	*Panel, Right Center	74-36407-01			
6	*Support, Top Card Cage	74-36409-01			
7	*Support, Bottom Card Cage (Weldment)	70-26144-01			
8	*Support, Left Disk	74-36410-01			
9	*Support, Power Supply (Weldment)	70-26148-01			
10	*Panel, Rear (Weldment)	70-27938-01			
11	*Shield, Left	74-37711-01			
12	*Shield, Right	74-37712-01			
13	*Guide	74-36824-01			
14	*Guide, Single Slot Card Cage	74-36055-01			
15	*Guide, BBU Snap-In	74-37320-01			
16	*Clip, ESD	74-37708-01			
17	*Guide, Card	12-26912-01			
18	*Bracket, Top Backplane	74-36895-01			
19	*Bracket, Connector Support	74-36784-01			
20	*Bracket, Floating Connector	74-36823-01			
21	*Baseplate Assembly, Canister	70-27903-01			
22	*Rivet, Blind	90-00030-47			
23	*Rivet, Blind Brazier	90-00030-48			
24	*Nut, Hex No. 6-32	90-08957-00			
25	*Screw, Machine Truss Hd No. 6-32 x 1/4	90-09100-03			
26	*Plate, BBU Shielding	74-41193-01			
27	*Finger, Non-Snag Grounding	12-26922-01			
28	*Rivet, Blind Flush	90-08521-00			
29	*Screw, Sems Pan Hd No. 6-32 x 5/16	90-00049-22			
30	*Shield, EMI/RFI Strip Clip-On	12-22380-11			
31	*Shield, EMI/RFI Finger	12-20580-09			
32	*Bracket, Side Shield	74-41141-01			
33	*Bracket, Top Right Shield	74-41139-01			
34	*Rivet, Dome Head	90-09626-00			
35	*Nut, Hex Ext Tooth Lockwasher No. 4-40	90-06557-00			
36	*Fingerstock, FCC Clip	12-26340-01			



FTV3410-07-IL

Figure 7. Box Assembly, AC Input

FIG.& ITEM NO.	DESCRIPTION	DEC PART NO. <sup>B</sup>	ECO CUT-IN H407 00001	USED ON CODE	REF FIG NO.
7-	BOX ASSEMBLY, AC INPUT (120V 50/60 Hz)	H407-A			5,16
1	*Box, AC (Weldment)	70-27229-01			
2	*Module, AC Input	54-18784-01			
3	*Screw, Sems Pan Hd No. 6-32 x 5/16	90-09984-07			
4	*Nut, Hex Ext Tooth Lockwasher No. 10-32	90-06565-00			
5	*Washer, Flat	90-06664-00			
6	*Breaker, 5P 7.5A 15A/20A-65V/1	12-28982-01			
7	*Cover, Filter	74-36705-01			
8	*Screw, Machine Flat Hd No. 6-32 x 3/16	90-09749-00			
9	*Cover, AC Box	70-28022-01			
10	*Label, Dry Ink Foil Black	36-27922-01			
	*Label, Kapton Blank	36-27920-01			
	*Label, Over Laminate	36-27921-01			
11	*Cover, AC Rear Chassis	74-40333-01			
12	*Screw, Machine Flat Hd No. 6-32 x 3/8	90-08406-02			
13	*Module, AC Input	54-18760-01			
14	*Harness Assembly, Wire 34 Conductor 22 AWG	17-02095-01			
15	*Screw, Self-Tap Pan Hd No. 4 x 1/4	90-00062-01			
16	*Lock, Spring Retainer	74-38232-01			
17	*Panel, Connector	74-40852-01			
18	*Bracket, Connector Clamp	74-39292-01			
19	*Washer, Flat	90-06714-00			
20	*Spring, Compression	12-17521-00			
21	*Pin, Guide	74-36406-01			
22	*Harness Assembly, Wire 43 Conductor 18 AWG	17-02742-01			
23	*Screw, Sems Pan Hd No 8-32 x 1/2	12-27034-01			
24	*Harness Assembly, Wire 13 Conductor 18 AWG	17-02094-01			
25	*Filter, EMI Line 15A @ 120V AC 7.5A @24	12-29179-01			
26	*Screw, Sems Pan Hd No. 8-32 x 1/2	90-09984-09			
27	*Finger, Non-Snag Grounding	12-26922-01			
28	*Ring, External Retainer	90-09273-02			
29	*Handle, Round 90 Degree Free Fall	12-27116-02			
30	*Lock, AC Chassis	74-38208-01			
31	*Label, "Ground Symbol Black"	36-12680-00			
32	*Screw, Sems Pan Hd No. 6-32 x 1/4	90-00049-01			
	CABLE/HARNESS ASSEMBLIES (Not Shown)				
	*Cable Assembly, 24 Conductor Flat	17-02750-01			
	*Harness Assembly, Wire 2 Conductor 22 AWG	17-02325-01			
	*Harness Assembly, Wire 3 Conductor 18 AWG	17-02727-01			
	LABELS (Not Shown)				
	*Label, Electrical Rating UR CSA H407-A AC	36-20122-19			
	*Label, "TUV BG"	36-33131-01			



FTV3410-08-IL

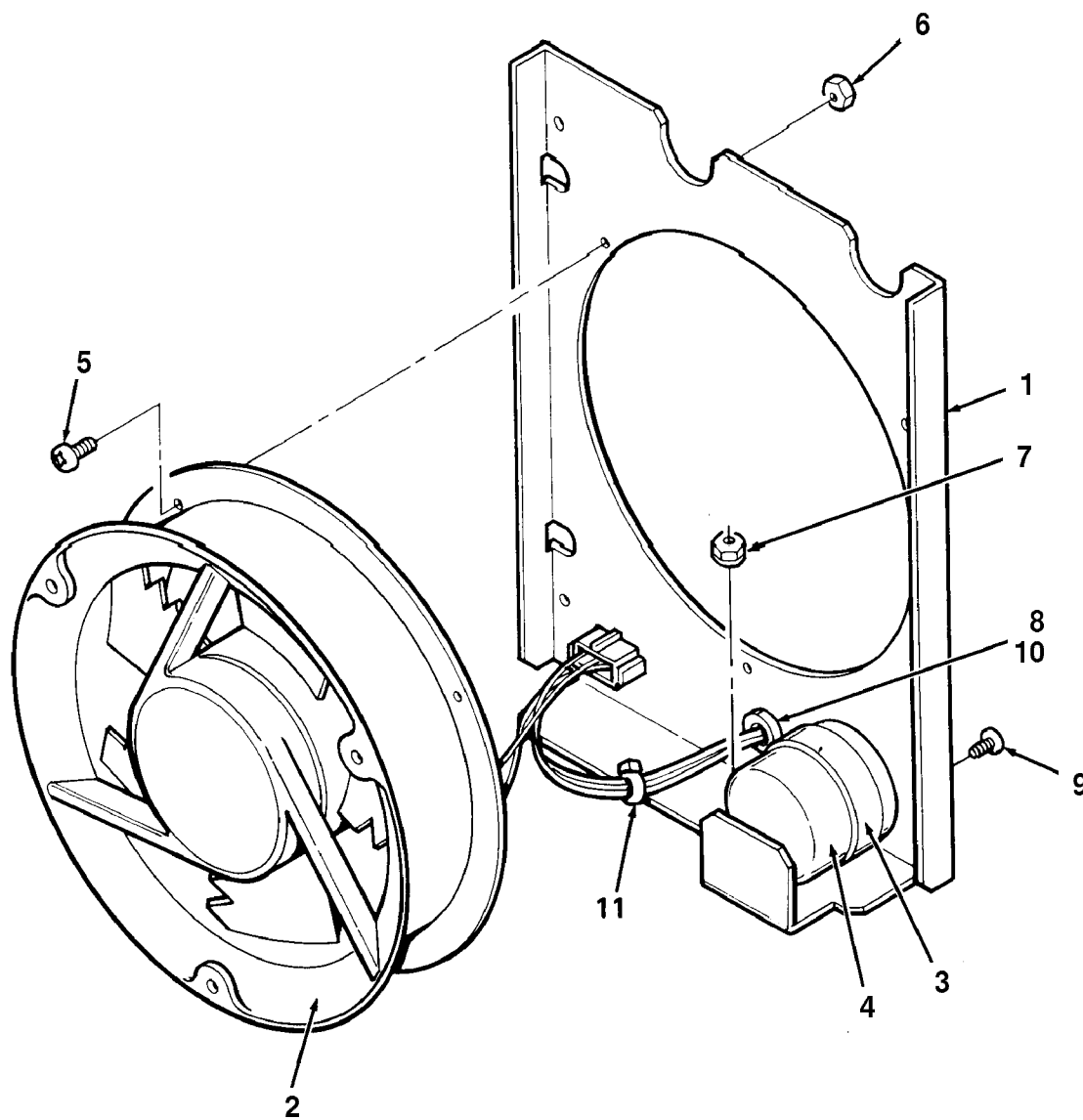
**Figure 8. Power Supply Assembly, Regulator**

FIG.& ITEM NO.	DESCRIPTION	DEC PART NO.	ECO CUT-IN H7233 00004	USED ON CODE	REF FIG NO.
8-	POWER SUPPLY ASSEMBLY, REGULATOR	H7233-AA		A	5
	POWER SUPPLY ASSEMBLY, REGULATOR	H7233-BA		B	16
	(Used On Codes Apply To This Figure Only)				
1	*Plate, Mounting	74-36413-01			
2	*Panel, Left Power Supply	74-36717-01			
3	*Panel, Right Power Supply	74-36718-01			
4	*FAN ASSEMBLY, DC	70-26865-01			9
5	*Chassis, Power Supply (Weldment)	70-26125-01			
6	*Bracket, Floating Signal Connector	74-36785-01			
7	*Module, Logic DC-DC Converter	54-17897-01		A	
8	*Module, PCIM	54-20219-01			
9	*Module, Disk Power Supply	54-18658-01			
10	*Cable Assembly, AC Power	17-02043-01			
11	*Cable Assembly, Regulator	17-02044-01			
12	*Harness Assembly, Wire 5 Conductor 18 AWG	17-02193-01			
13	*Harness Assembly, Wire 34 Conductor 22 AWG	17-02322-01			
14	*Screw, Sems Hex Hd No. 6-32 x 5/16	90-09988-11			
15	*Screw, Machine Flat Hd No. 6-32 x 5/16	90-08404-02			
16	*Cable Tie	90-07031-00			
17	*Screw, Sems Pan Hd No. 6-32 x 3/8	90-00049-24			
18	*Screw, Sems Hex Hd No. 8-32 x 5/8	90-09988-03			
19	*Nut, Hex Ext Tooth Lockwasher No. 6-32	90-09243-00			
20	*Handle, Round 90 Degree Free Fall	12-27116-02			
21	*Finger, Non-Snag Grounding	12-26922-01			
22	*Shield, EMI/RFI Strip Clip-On	12-22380-06			
23	*Screw, Machine Pan Hd No. 4-40 x 5/16	90-06010-01			
24	*Nut, Hex Ext Tooth Lockwasher No. 4-40	90-06557-00			
25	*Screw, Plastic Slot Hd No. 6-32 x 1/2	90-11058-01			
26	*Bumper, Button	90-11060-01			
27	*Grommet, Caterpillar	12-25469-10			
28	*Washer, Flat Nylon	90-06707-00			
29	*Washer, Flat	90-06661-00			
30	*Washer, Split Helical	90-06690-00			
31	*Nut, Hex Ext Tooth Lockwasher 8-32	90-10154-00			
32	*Shield, RFI Gasket	12-28686-08			
33	*Shield, PCIM	74-41750-01			
34	*Screw, Sems Pan Hd No. 6-32 x 1/4	90-10174-00			
	ITEM (Not Shown)				
	*Washer, Split	90-06688-00			

FIG.& ITEM NO.	DESCRIPTION	DEC PART NO.	E ECO CUT-IN H7233 00004	USED ON CODE	REF FIG NO.
8-	<p>LABELS (Not Shown)</p> <p>* Label, Ground Symbol Black</p> <p>* Label, "Electrical Rating UR, CSA H7233"</p> <p>* Label, "Electrical Rating, UR CSA, H7234"</p> <p>* Label, "TUV BG"</p> <p>* Label, "Power Supply DC H7233-AA"</p> <p>* Label, "DC Power Supply H7233-BA"</p> <p>* Label, Kapton Blank</p> <p>* Label, Laminated Over</p> <p>* Label, Dry Ink Foil Black</p>	<p>36-12680-00</p> <p>36-20122-17</p> <p>36-20122-18</p> <p>36-33131-01</p> <p>36-33147-01</p> <p>36-33147-02</p> <p>36-27920-01</p> <p>36-27921-01</p> <p>36-27922-01</p>		<p>A</p> <p>B</p> <p>A</p> <p>B</p>	

**THIS PAGE INTENTIONALLY LEFT BLANK**

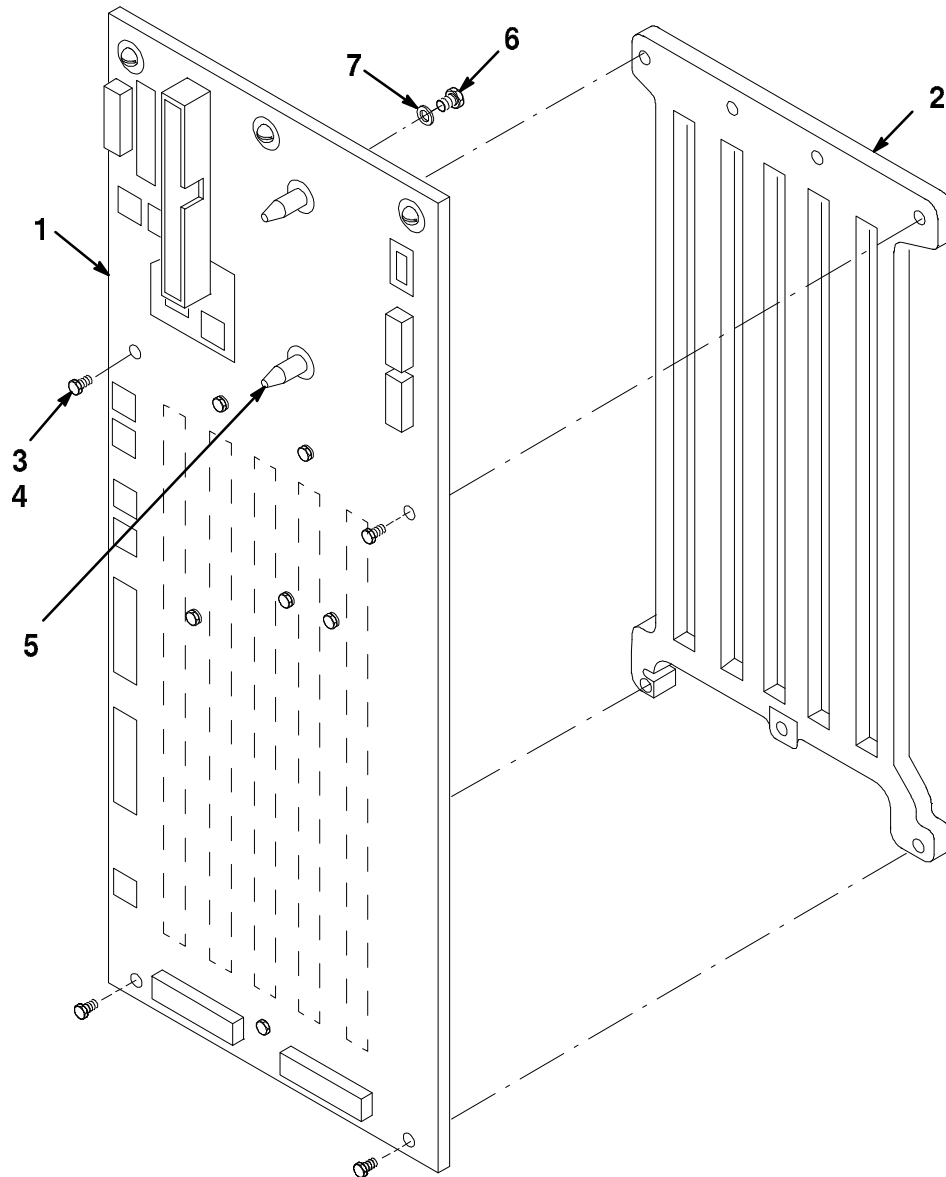




FTV3410-09-SC

**Figure 9. Fan Assembly, DC**

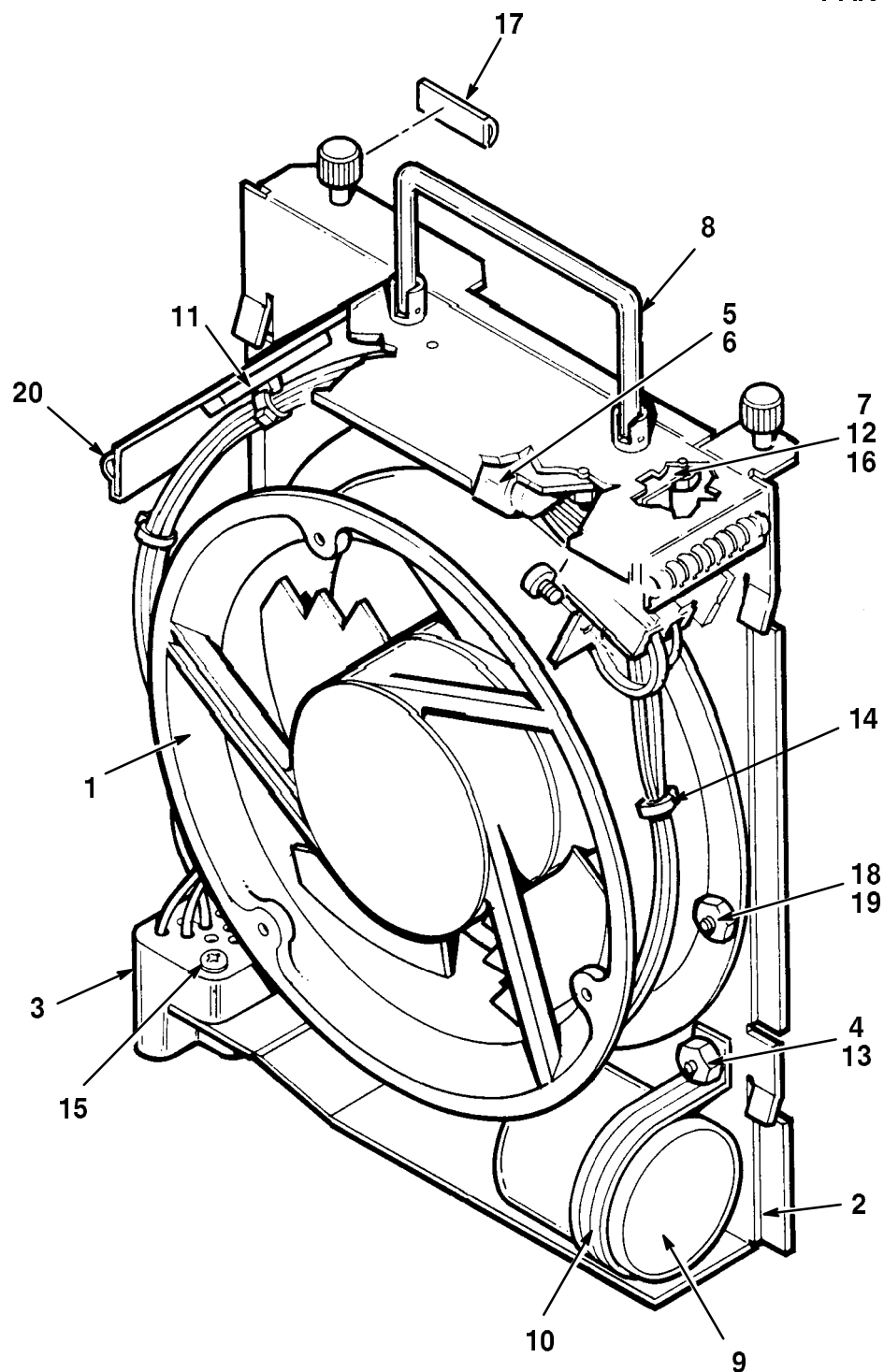
FIG.& ITEM NO.	DESCRIPTION	DEC PART NO. <sup>A</sup>	ECO CUT-IN 70-26865 00000	USED ON CODE	REF FIG NO.
9-	FAN ASSEMBLY, DC	70-26865-01			8
1	*Bracket, Power Supply Fan	74-36719-01			
2	*Fan, Tube Axial 48 VDC	12-23374-09			
3	*Clamp, Single Loop Cushioned	12-32738-01			
4	*Capacitor, 2800 MFD 55V +/-20% 85C	10-14337-00			
5	*Screw, Machine Pan Hd No. 6-32 x 3/4	90-06026-01			
6	*Nut, Well No. 8-32	90-10115-00			
7	*Nut, Hex Ext Tooth Lockwasher No. 10-32	90-06565-00			
8	*Grommet, Round Rubber	90-07028-00			
9	*Screw, Sems Truss Hd No. 10-32 x 1/4	90-00049-02			
10	*Grommet, Polymide Caterpillar	90-07035-00			
11	*Cable Tie	90-07031-00			



FTV3410-10-IL

**Figure 10. Backplane Assembly**

FIG.& ITEM NO.	DESCRIPTION	DEC PART NO. <sup>A</sup>	ECO CUT-IN 70-27877 00000	USED ON CODE	REF FIG NO.
10-	BACKPLANE ASSEMBLY	70-27877-01			5
1	*Module, Logic	54-19487-01			
2	*Casting, Backplane Stiffener	74-39958-01			
3	*Washer, Flat	12-19044-02			
4	*Screw, Self-Tap Truss Hd No. 6 x 1/2	90-00063-13			
5	*Pin, Backplane Guide	74-36892-01			
6	*Screw, Machine Pan Hd No. 8-32 x 5/16	90-06036-01			
7	*Washer, Split Helical	90-06690-00			

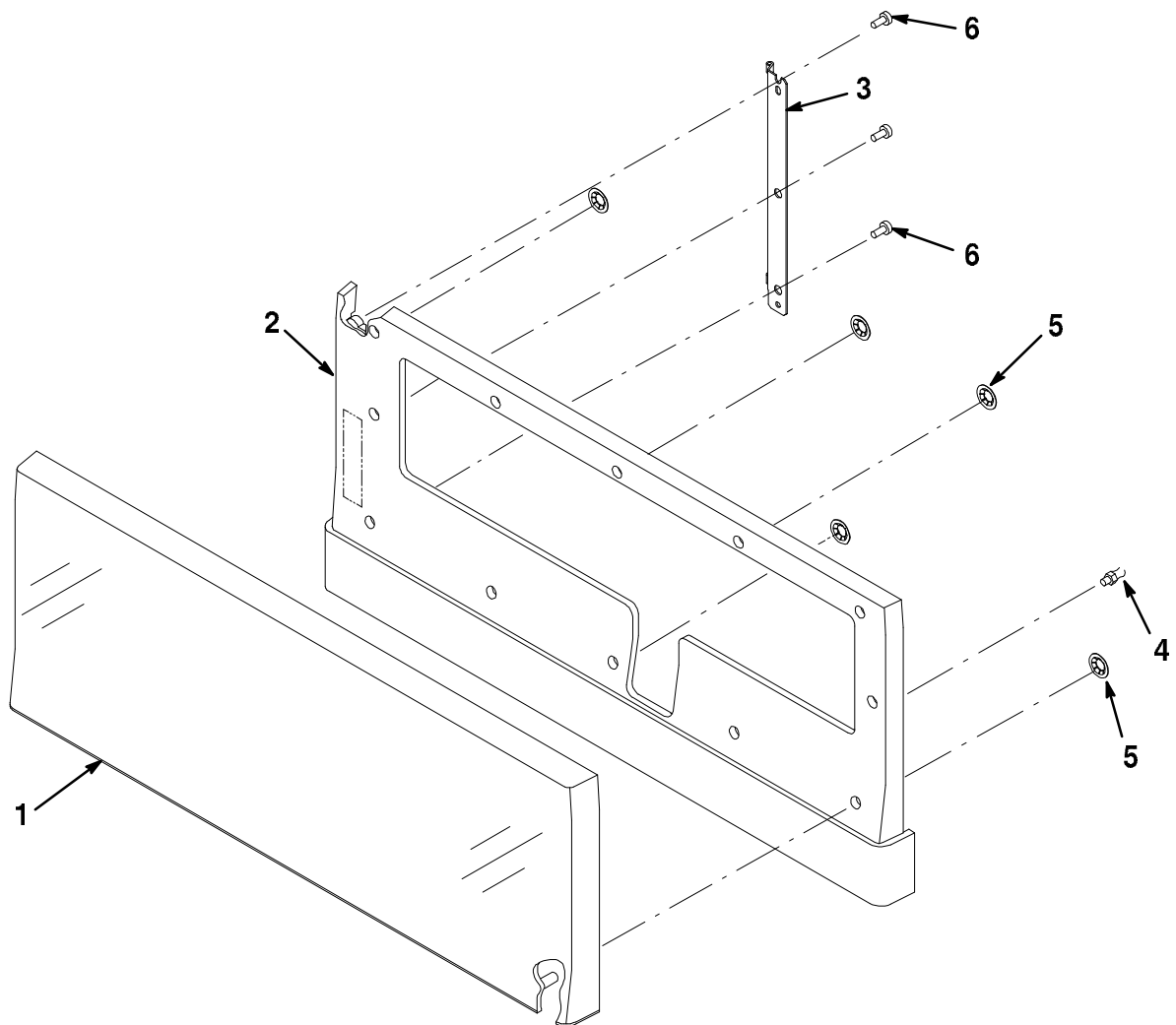


FTV3410-11-SC

**Figure 11. Fan Assembly**

FIG.& ITEM NO.	DESCRIPTION	<sup>B</sup> DEC PART NO.	ECO CUT-IN 70-26102 00001	USED ON CODE	REF FIG NO.
11-	FAN ASSEMBLY	70-26102-01			5
1	*Fan, Tube Axial 48 VDC	12-23374-09			
2	*Panel, Fan Logic	74-36414-01			
3	*Harness Assembly, Wire 7 Conductor 22 AWG	17-02265-01			
4	*Nut, Hex Ext Tooth Lockwasher No. 8-32	90-06563-00			
5	*Battery, 3 Cell 3.75V .18 MA Nicad	12-19245-02			
6	*Holder, Battery Pack	74-33477-01			
7	*Indicator, Magnetic Cable Assembly	12-23344-04			
8	*Handle, Round 90 Degree Free Fall	12-27116-02			
9	*Capacitor, 2800 MFD 55V +/- 20% 85C	10-14337-00			
10	*Clamp, Single Loop Cushioned	12-32738-01			
11	*Mount, Adhesive Backed Cable Tie	90-08264-00			
12	*Bracket, Sensor	74-40399-01			
13	*Screw, Sems Truss Hd No. 10-32 x 1/4	90-00049-02			
14	*Cable Tie	90-07031-00			
15	*Screw, Sems Pan Hd No. 8-32 x 1/2	90-09545-01			
16	*Nut, Hex Ext Tooth Lockwasher No. 4-40	90-06557-00			
17	*Strip, Contact	12-19557-03			
18	*Screw, Machine Flat Hd No. 6-32 x 3/4	90-00039-11			
19	*Nut, Hex Ext Tooth Lockwasher No. 6-32	90-06560-00			
20	*Shield, EMI/RFI Strip Clip-On	12-22380-17			

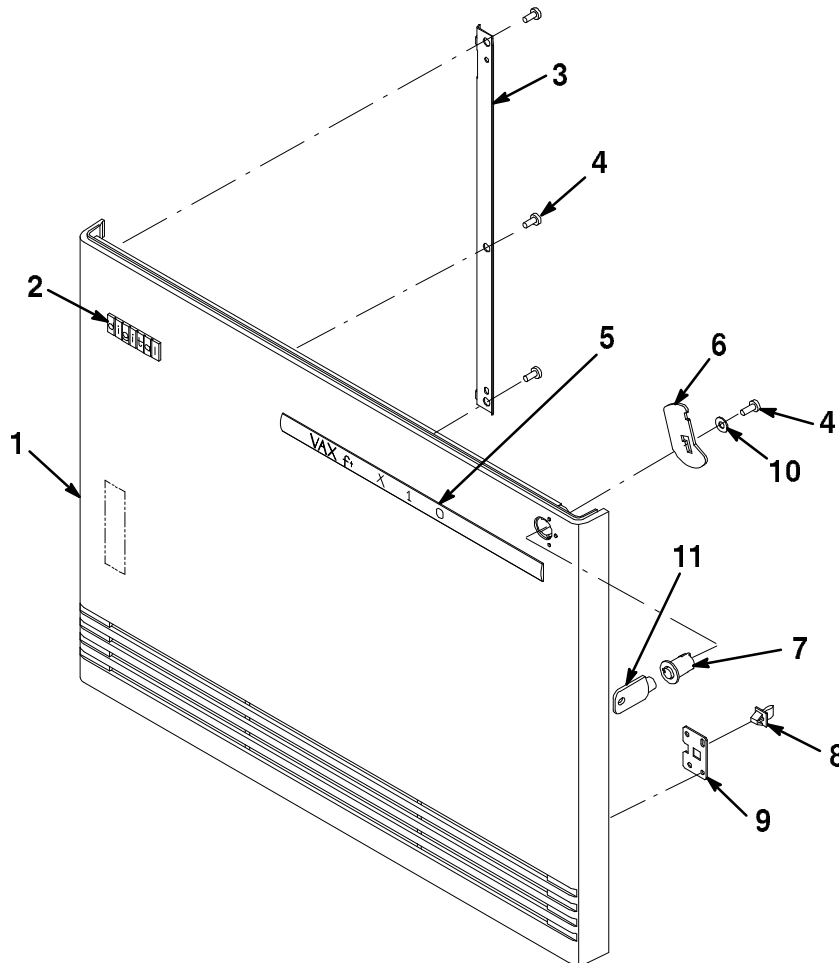
FIG.& ITEM NO.	DESCRIPTION	DEC PART NO.	ECO CUT-IN 70-27871 00000	USED ON CODE	REF FIG NO.
12-	DOOR ASSEMBLY, TOP	70-27871-01			2,3,15
1	*Cover, Top Door Dress	74-39874-01			
2	*Door, Top	74-39875-01			
3	*Bracket, Top Door Hinge	74-39355-01			
4	*Stud, Ball	90-08149-00			
5	*Nut, Push Round	90-09865-01			
6	*Screw, Self-Tap Pan Hd No. 8-16 x 3/8	90-09800-04			



FTV3410-12-IL

**Figure 12. Door Assembly, Top**

FIG.& ITEM NO.	DESCRIPTION	DEC PART NO.	ECO CUT-IN 70-27872 00001	USED ON CODE	REF FIG NO.
13-	DOOR ASSEMBLY, LOWER	70-27872-01			2,3,15
1	*Door, Bottom Front	74-39271-03			
2	*Logo	74-40938-01			
3	*Bracket, Bottom Door Hinge	74-39356-01			
4	*Screw, Self-Tap Pan Hd No. 8-16 x 3/8	90-09800-04			
5	*Medallion, Front Door	74-43260-01			
6	*Cam, Locking	74-39261-01			
7	*Barrel, Key	74-39269-01			
8	*Catch, Door Assembly	90-09571-00			
9	*Bracket, Strike Latch	74-40386-01			
10	*Washer, Flat	90-06661-00			
11	*Key, Plastic	12-17119-01			



FTV3410-13-IL

**Figure 13. Door Assembly, Lower**