

# ILLUSTRATED PARTS BREAKDOWN

# MicroVAX 3100

## Models 30/40/80/85/90/95

### ILLUSTRATED PARTS BREAKDOWN (IPB)

The IPB is used to identify a part and its location in a hardware product. The document references specific item numbers in the associated parts list.

### HOW TO USE THE IPB

1. Locate the figure containing the item of interest.
2. Locate the number (callout) of the item of interest.
3. Locate that item number in the associated parts list.

### FORMAT

Each IPB is generally organized based on its first figure. All other assemblies and subassemblies are referenced from this figure. Each figure contains numeric callouts of all major parts (items).

### PARTS LIST

Each parts list contains the following:

**Figure and Item No.** — Lists the figure number and its referenced numeric callout

**Description** — Presents the name and a brief description of the item. A single asterisk (\*) preceding the description denotes item is a

subassembly to its referenced figure. A double asterisk (\*\*) preceding the description indicates that this item is subordinate to the preceding single asterisk item.

**Digital Part No.** — Lists the Digital/Vendor part number. The letter in the column heading indicates the current revision level of the Engineering Drawing for the referenced figure.

**ECO Cut-In** — Lists the top assembly drawing number and revision level at first printing. All additional revisions to an item are listed in this column.

**Used On Code** — Lists letters referring to the product variation assigned in Figure 1. When this column is blank, the item is used in all variations.

**Ref Fig No.** — Lists a cross reference between figures within the IPB.

### PART NUMBER/PART DESCRIPTION INDEX SECTION

Lists items by part number numerically, and description alphabetically. Items are also referenced to a location within the IPB by figure and item number.

### ECO/REVISION HISTORY

### OTHER MANUALS REFERENCED

FIGURE NO.	ASSEMBLY	INITIAL LEVEL	CURRENT LEVEL	PRINTING DATE	OTHER MANUALS REFERENCED
1	450ZN	00000	00000	15—JUL—94	EK—A0519—MG EK—A0510—MG EK—A0511—MG
2	70—28535	00000	00000		
3	70—25726	00001	00002		
4	450ZM	00000	00002		
5	70—27106	00000	00000		
6	70—26167	00000	00001		
7	470ZM	00000	00001		
8	47ZBM	00000	00000		
9	48ZBM	00000	00000		
10	46ZBM	00000	00000		

Digital Equipment Corporation reserves the right, without notice, to make substitutions and modifications in the specifications of products documented in this manual and further reserves the right to withdraw any of these products from the market without notice.

Digital Equipment Corporation is not responsible for errors which may appear in the technical description (including illustrations and photographs) of the products covered by this manual.

None of the descriptions contained in this manual imply the granting of any license whatsoever to make, use or sell equipment constructed in accordance therewith.

Restricted Rights: Use, duplication or disclosure by the U.S. Government is subject to restrictions as set forth in subparagraph (c) (1) (ii) of the Rights in Technical Data and Computer Software clause at DFARS 252.227-2713.

Copyright © 1991, 1992, 1994 by Digital Equipment Corporation. All rights reserved.  
Printed in U.S.A.

The postage-paid READER'S COMMENTS form on the last page of this document requests your critical evaluation to assist us in preparing future documentation.

The following are trademarks of Digital Equipment Corporation :

---

DEC, DECdirect, DECnet, MicroVAX, Thin Wire, VMS and the DIGITAL logo.

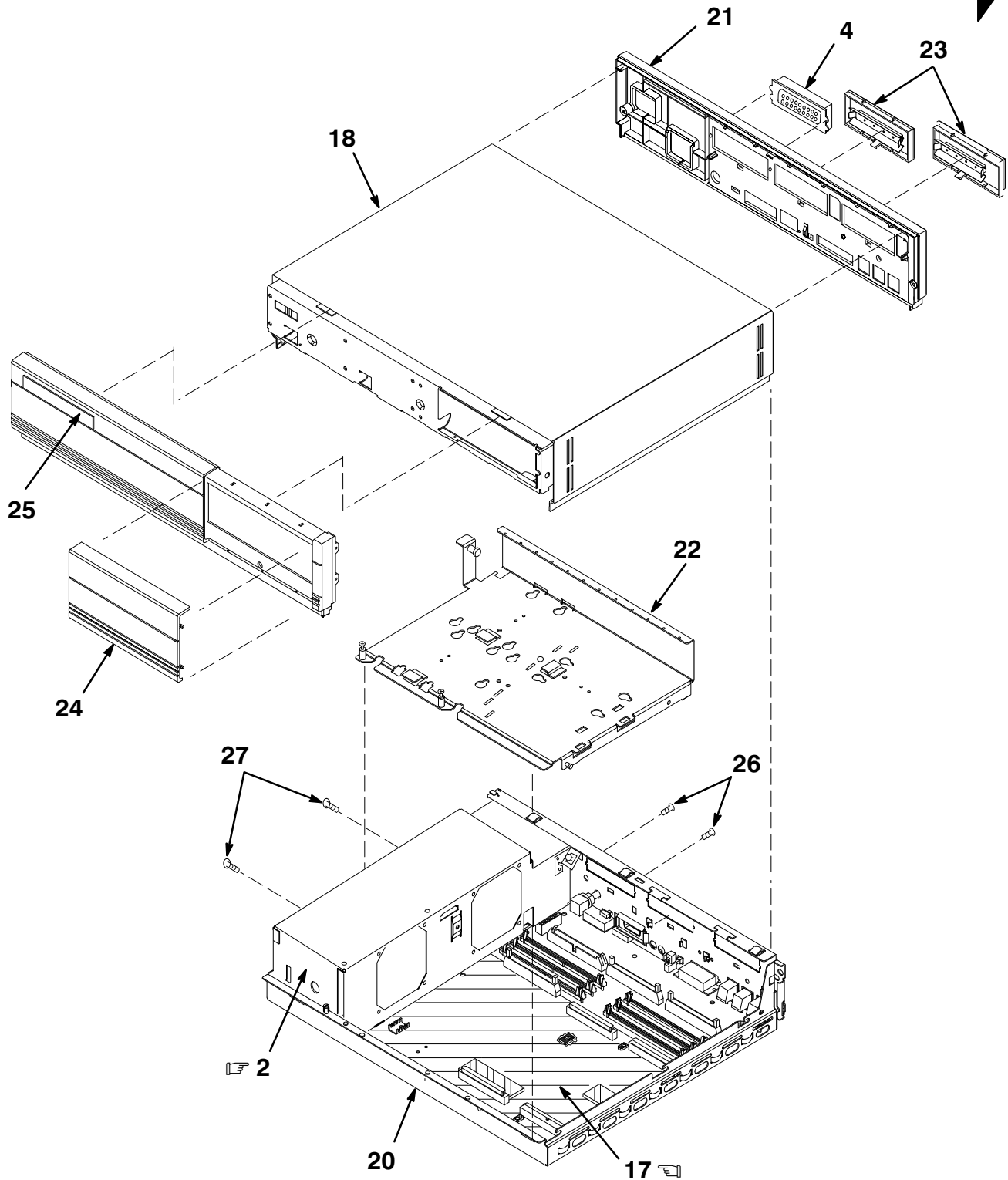
# **MicroVAX 3100**

## **MODEL 30**

THIS PAGE INTENTIONALLY LEFT BLANK

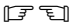

 INDICATES FRU LEVEL PARTS.

PARTS LIST 

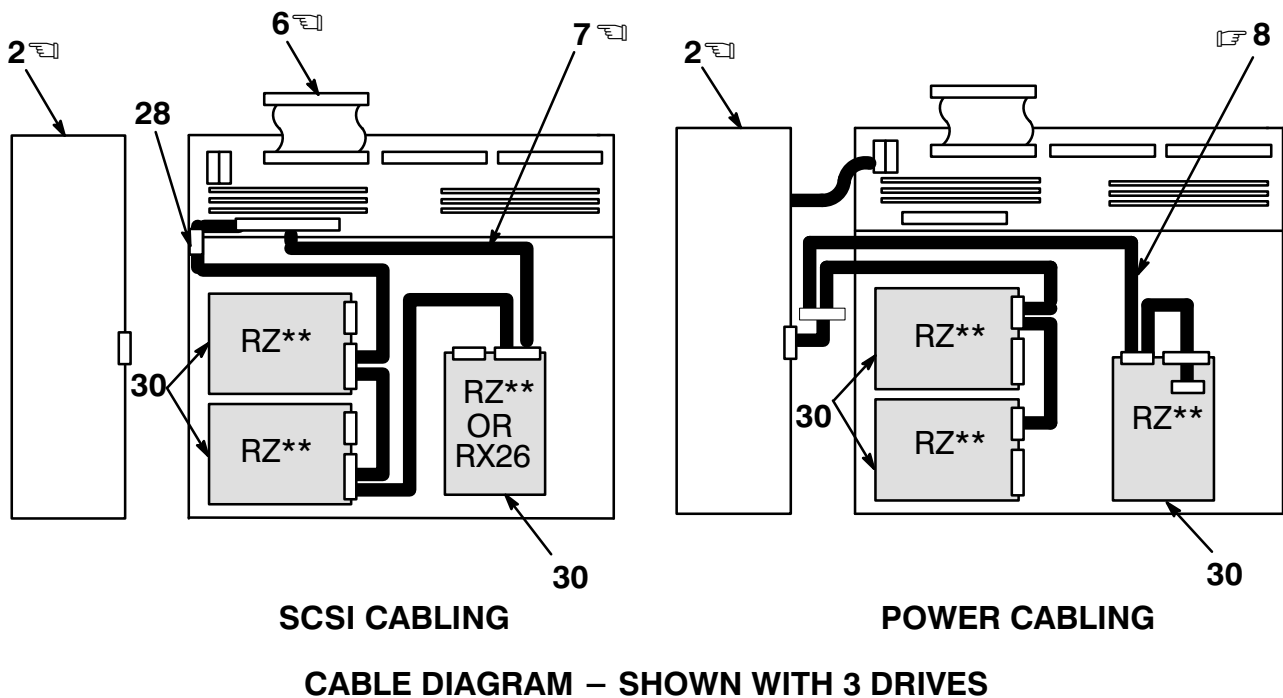
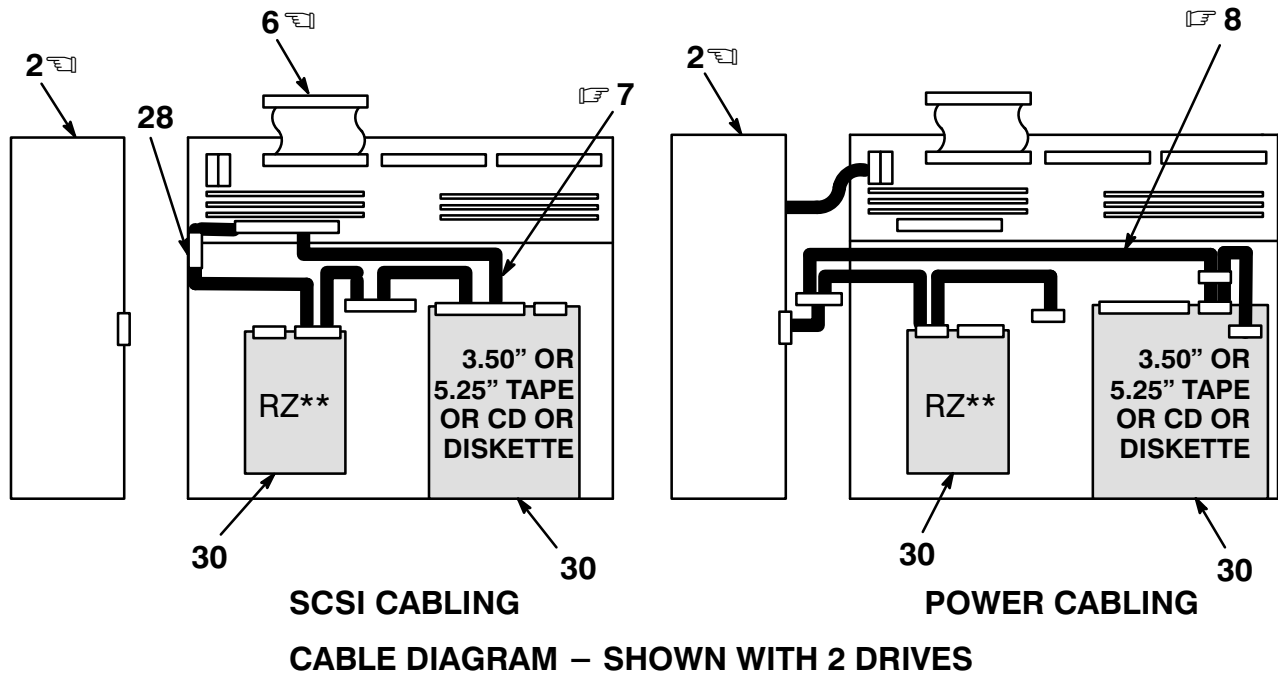


MV310-01-IL

**Figure 1. MicroVAX 3100 Model 30 SBB (System Building Block),  
KA45 CPU, BA42A Enclosure (Sheet 1 of 2)**

 INDICATES FRU LEVEL PARTS.  
 = OPTIONAL (SEE PARTS LIST)

PARTS LIST 



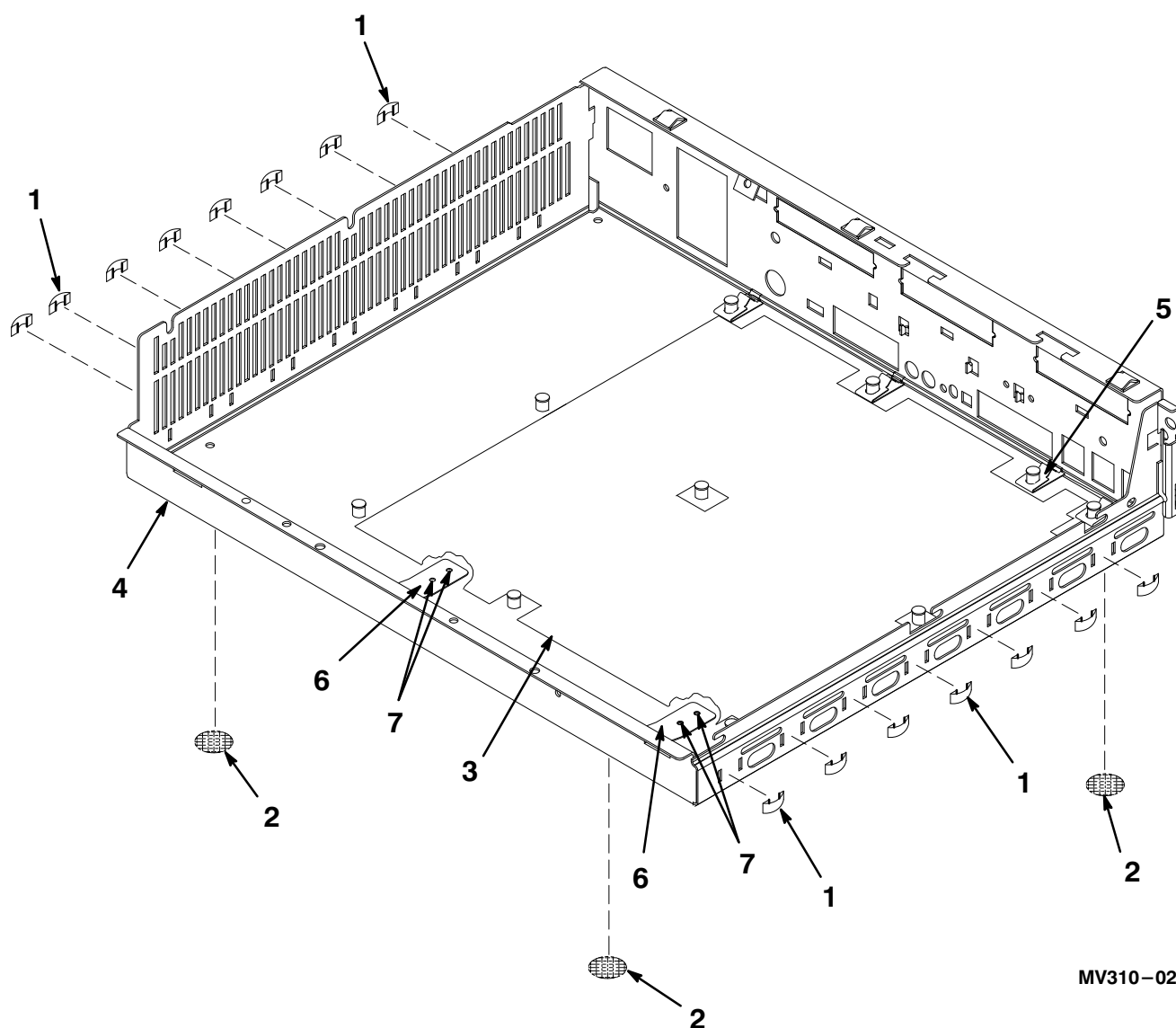
MV310-01A-IL

**Figure 1. MicroVAX 3100 Model 30 SBB (System Building Block),  
 KA45 CPU , BA42A Enclosure (Sheet 2 of 2)**

FIG.& ITEM NO.	DESCRIPTION	DIGITAL PART NO. <sup>A</sup>	ECO CUT-IN 450ZN 00000	USED ON CODE	REF FIG NO.
1 –	MicroVAX MODEL 30 SBB (SYSTEM BUILDING BLOCK), KA45 CPU , BA42A ENCLOSURE	450ZN – B9			
1	*Cable, 25 ft. Data (17–00811–03)	BC16E–25			
☞ 2	*Power Supply, 122W Auto Select 100V/120V 220V/240V	H7083–AA			
3	*Adapter, 25 Pin D–Sub to MMJ	H8575–A			
4	*Connector, SCSI Term 50 Position Champ HSG	12–30552–01			
5	*Ferrite, Bead 50 Conductor Cable	16–34255–02			
☞ 6	*Cable Assembly, Flat 50 Way SCSI	17–02944–01			
☞ 7	*Cable Assembly, Round SCSI 50 Way	17–03016–01			
☞ 8	*Cable Assembly, DC Harness	17–03017–01			
9	*Label, “Bar Code”	36–28231–07			
10	*Label, “Attention, Preinstalled Software”	36–28979–01			
11	*Label, “Regulatory USA/Canada”	36–30382–21			
11	*Label, “Regulatory UK”	36–30382–22			
12	*Label, “FTZ Postcard”	36–30422–05			
13	*Label, “Diagnostic VS42A”	36–30489–01			
14	*Label, “PTT Regulatory”	36–36015–01			
15	*Label, “Product ID”	36–36394–01			
16	*Package Assembly	37–01107–01			
☞ 17	*MODULE ASSEMBLY, SOC CPU	54–20654–01			
☞ 17A	**Battery, 3 Cell 3.75V .18 ma Nicad	12–19245–01			
18	*ENCLOSURE ASSEMBLY, TOP	70–25726–01			3
19	*KIT, Thick/ThinWire ETHERNET	70–26209–01			
19A	**Connector, 50 Ohms BNC Coax	12–26318–01			
19B	**Tee, BNC Coax	12–25869–01			
19C	**Connector, D–Sub 15 Position	12–22196–01			
20	*BASE ASSEMBLY	70–28535–01			2
21	*Bezel Assembly, Rear	70–28536–01			
22	*Shelf, Lower Drive Assembly	70–28537–01			
23	*Cover, FCC Blanking	70–28539–02			
24	*Insert, Blank Bezel FCC Shield	74–37499–02			
25	*Medallion, MicroVAX 3100 Model 30	74–37642–20			
26	*Screw, Sems Pan Hd No. 4–40 x .375	90–09643–00			
27	*Screw, Sems Pan Hd No. 6–32 x .312	90–09984–07			
28	*Clamp, Cable SCSI Loop – Lower Shelf	90–11237–01			
	NOTE 1 : Items 1, 3, 5, 9–16, 19 and 29 are not shown.				

FIG.& ITEM NO.	DESCRIPTION	<sup>A</sup> DIGITAL PART NO.	ECO CUT-IN 450ZN 00000	USED ON CODE	REF FIG NO.
1 –					
29	*Documentation, “Guide to Using VMS”	EK – A0377 – UG			
30	*Drive Assemblies (See Note 2)	N/A			
	<p><b>Note 2 :</b> Drives are not part of this assembly – shown for reference only. For more information on optional items, refer to the following MicroVAX 3100 Platform Maintenance Information manuals:</p> <p>Documentation, Options Manual</p> <p>Documentation, BA42 – A Enclosure Maintenance</p> <p>Documentation, BA42 – B Enclosure Maintenance</p>	<p>EK – A0519 – MG</p> <p>EK – A0510 – MG</p> <p>EK – A0511 – MG</p>			

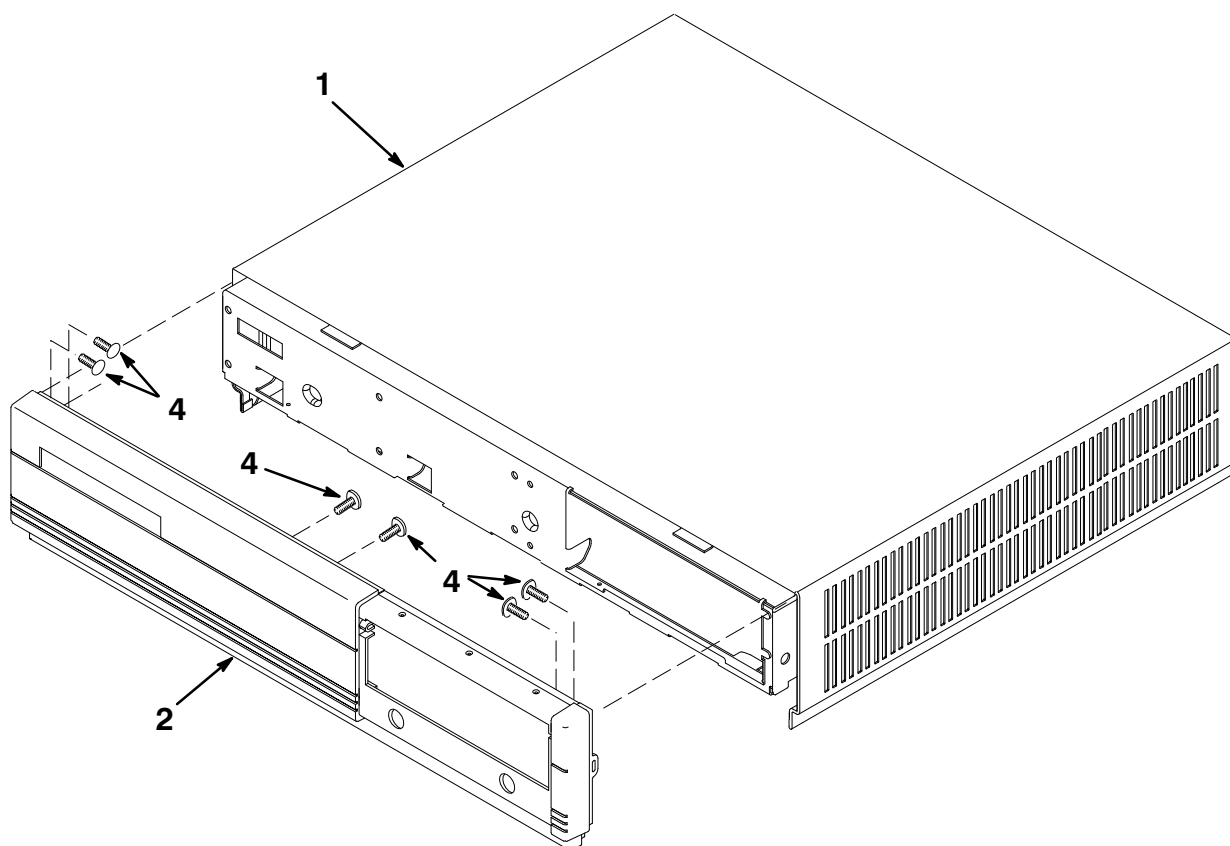
FIG.& ITEM NO.	DESCRIPTION	A DIGITAL PART NO.	ECO CUT-IN 70-28535 00000	USED ON CODE	REF FIG NO.
2-	BASE ASSEMBLY	70-28535-01			1
1	*Finger, Non-Snag Grounding (For EOS)	12-26922-01			
2	*Foot, Self Adhesive	12-35649-01			
3	*Sheet, CPU Insulation	12-39980-01			
4	*Base Detail, Model 30	74-42108-01			
5	*Gasket, CPU Grounding	74-42429-01			
6	*Cantilever, CPU Retention	74-42448-01			
7	*Rivet, Repetition Clinch .125 DIA	90-00052-01			



MV310-02-IL

Figure 2. Base Assembly

FIG.& ITEM NO.	DESCRIPTION	<sup>c</sup> DIGITAL PART NO.	ECO CUT-IN 70-25726 00001	USED ON CODE	REF FIG NO.
3-	ENCLOSURE ASSEMBLY, TOP	70-25726-01			1
1	*Enclosure, Top (Weldment)	70-25786-01			
2	*Bezel Assembly, Front	70-25797-01			
3	Not Used				
4	*Screw, Self-Tap Flat Hd No. 4-20 x 3/16	90-10411-01			



MV310-03-IL

**Figure 3. Enclosure Assembly, Top**

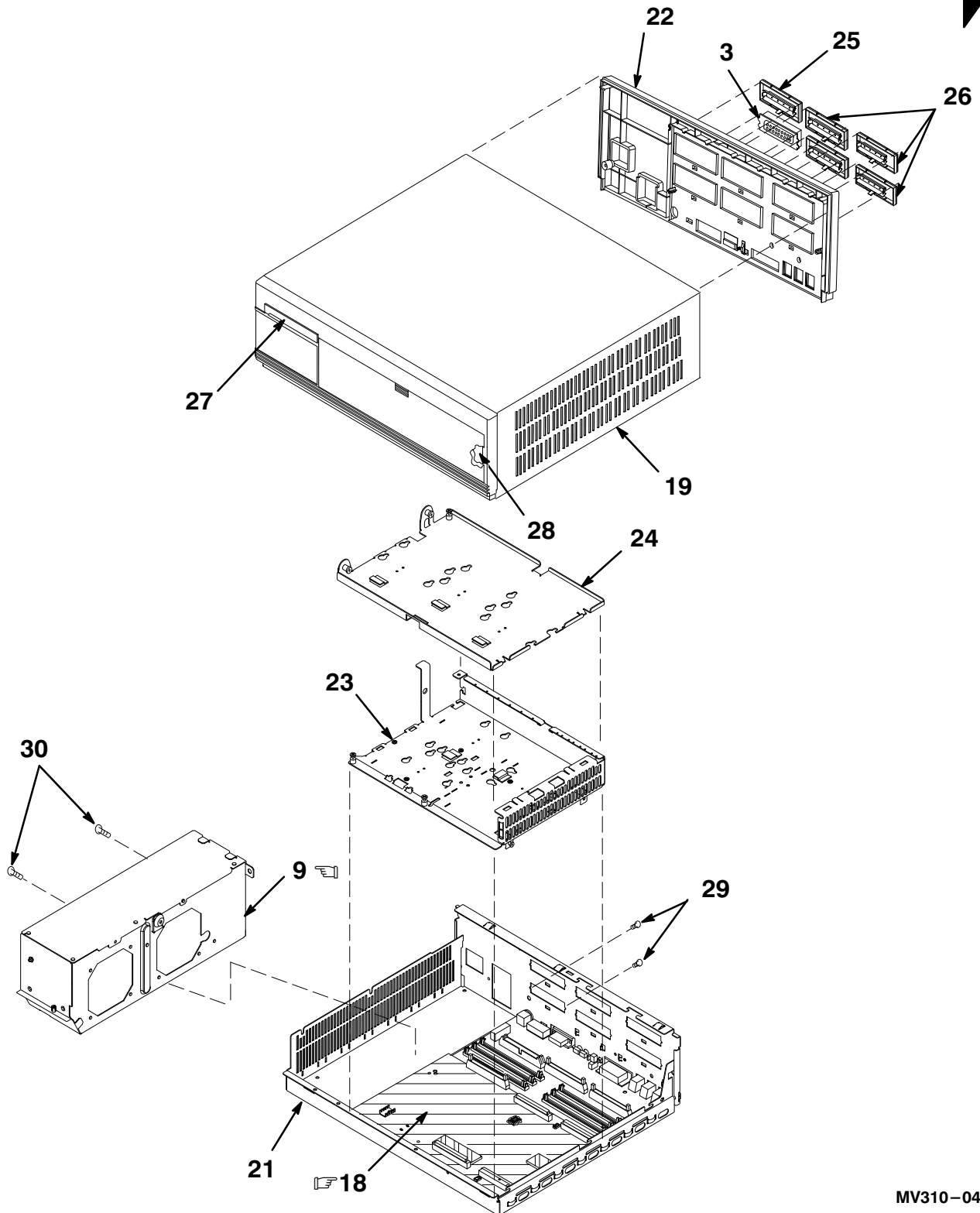
# **MicroVAX 3100**

## **MODEL 40**

THIS PAGE INTENTIONALLY LEFT BLANK

 INDICATES FRU LEVEL PARTS.

PARTS LIST 



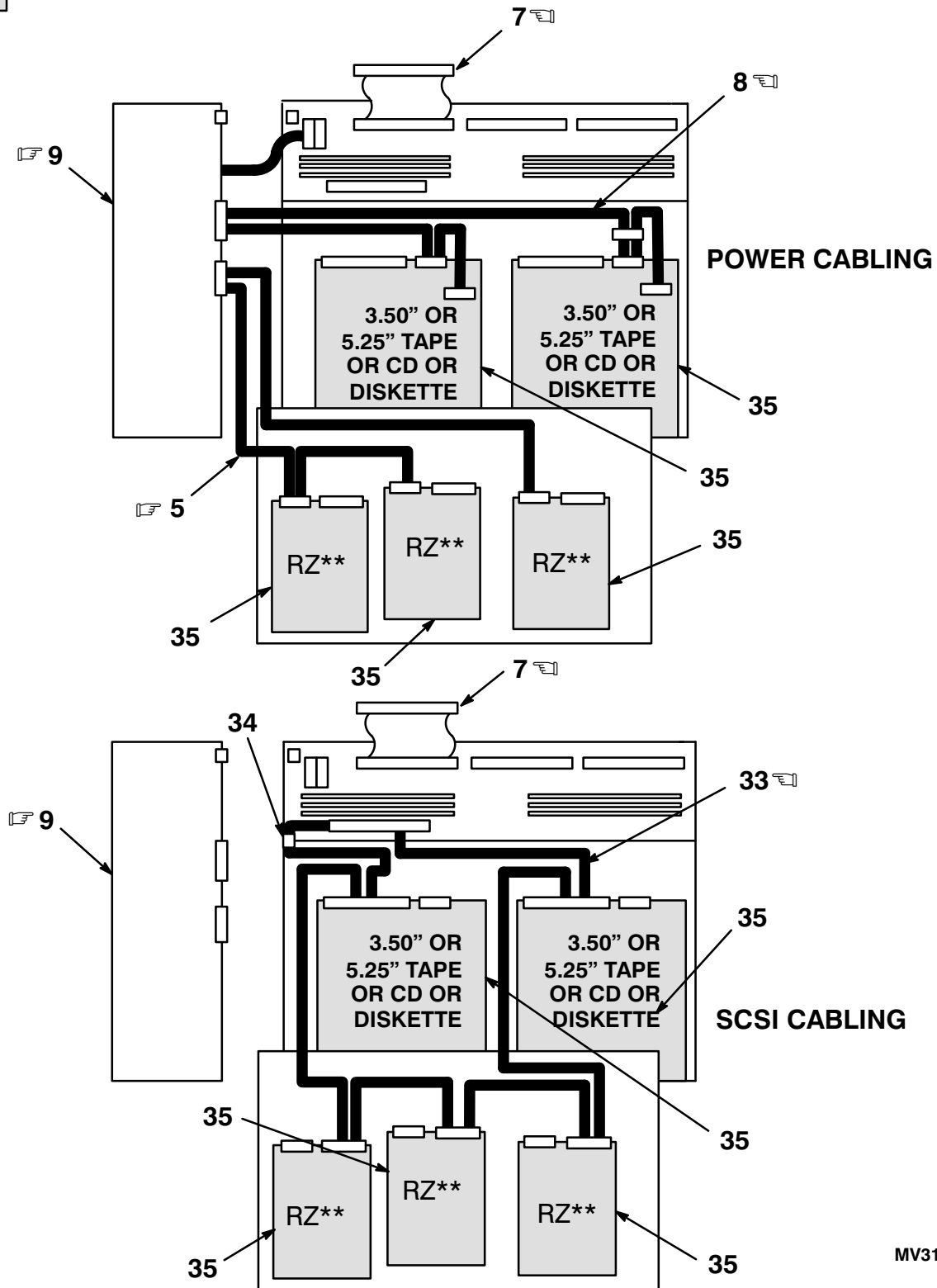
MV310-04-IL

**Figure 4. MicroVAX 3100 Model 40 SBB (System Building Block),  
KA45 CPU Kernel, BA42B Enclosure (Sheet 1 of 2)**

INDICATES FRU LEVEL PARTS.

= OPTIONAL (SEE PART LIST)

PARTS LIST



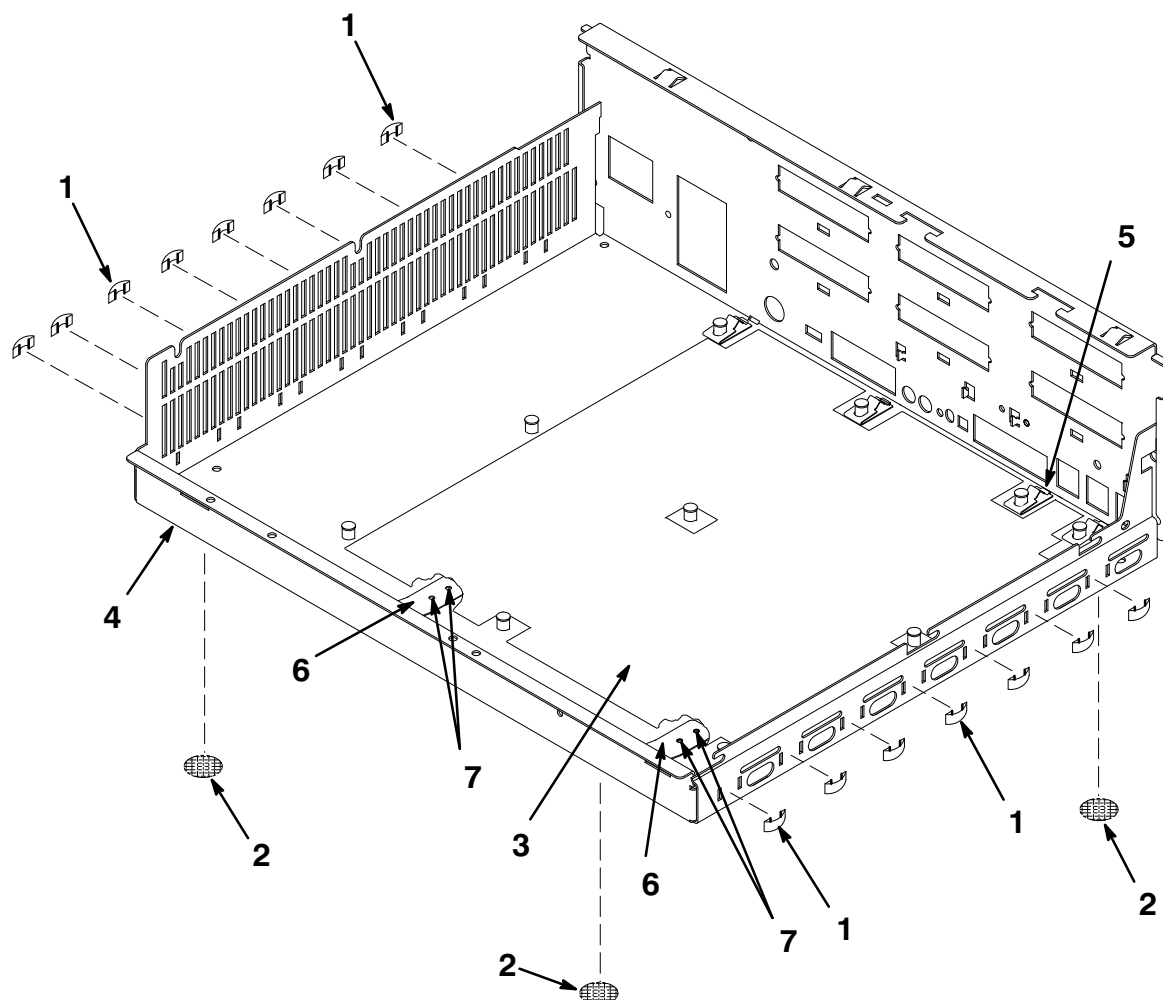
MV310-04A-IL

**Figure 4. MicroVAX 3100 Model 40 SBB (System Building Block), KA45 CPU Kernel, BA42B Enclosure (Sheet 2 of 2)**

FIG.& ITEM NO.	DESCRIPTION	DIGITAL PART NO. <sup>c</sup>	ECO CUT-IN 450ZM 00000	USED ON CODE	REF FIG NO.
4–	MicroVAX 3100 MODEL 40, SBB (SYSTEM BUILDING BLOCK) , KA45 CPU KERNEL, BA42B ENCLOSURE	450ZM–B9			
1	*Cable, Oval 25 ft. Data (17–00811–03)	BC16E–25			
2	*Adapter, 25 Pin D–Sub to MMJ	H8575–A			
3	*Connector, SCSI Term 50 Position Champ HSG	12–30552–01			
4	*Ferrite, Bead 50 Conductor Cable (added)	16–34255–02	00001		
☞ 5	*Harness Assembly, Wire	17–02219–01			
6	NOT USED				
☞ 7	*Cable Assembly, Flat 50 Way SCSI	17–02944–01			
☞ 8	*Cable Assembly, DC Harness	17–03018–01			
☞ 9	*Power Supply Assembly, 166 Watts 120V/240V	30–35042–01			
10	*Label, “Bar Code”	36–28231–07			
11	*Label, “Attention, Preinstalled Software”	36–28979–01			
12	*Label, “Regulatory Canada”	36–30382–23			
12	*Label, “Regulatory UK”	36–30382–24			
13	*Label, “FTZ Postcard”	36–30422–10			
14	*Label, “Diagnostic VS42A”	36–30489–01			
15	*Label, “PTT”	36–36015–02			
16	*Label, “Product ID”	36–36394–02			
17	*Package Assembly	37–01106–01			
☞ 18	*MODULE ASSEMBLY, SOC CPU	54–20654–01			
☞ 18A	**Battery, 3 Cell 3.75V .18 ma Nicad	12–19245–01			
19	*COVER ASSEMBLY	70–26167–01			6
20	*KIT, Thick/ThinWire ETHERNET **Connector, 50 Ohms BNC Coax **Tee, BNC Coaxial **Connector, D–Sub 15 Position	70–26209–01 12–26318–01 12–25869–01 12–22196–01			
21	*BASE ASSEMBLY	70–27106–01			5
22	*Bezel Assembly, Rear	70–27107–01			
23	*Shelf, Lower Drive Assembly	70–27108–01			
24	*Shelf, Upper Drive Assembly	70–27109–01			
25	*Cover, FCC Blanking Option	70–28539–01			
26	*Cover, FCC Blanking Comms	70–28539–02			
27	*Medallion, MicroVAX 3100–40	74–37642–21			
28	*Insert, Bezel	74–38027–01			
29	*Screw, Sems Pan Hd No 4–40 x 3/8	90–09643–00			
	NOTE 1: Items 1, 2, 4, 10–17, and item 20 are not shown.				

FIG.& ITEM NO.	DESCRIPTION	<sup>c</sup> DIGITAL PART NO.	ECO CUT-IN 450ZM 00000	USED ON CODE	REF FIG NO.
4-					
30	*Screw, Sems Pan Hd No. 6-32 x 5/16	90-09984-07			
31	NOT USED				
32	*Documentation, "Guide To Using VMS"	EK-A0377-UG			
33	*Cable, Flat 50 Cond. Strain Relief (added) (replaces 17-02943-01) (See Note 2)	17-03588-01	00002		
34	*Clamp, Strain Relief Cable (added) (replaces 90-11237-01) (See Note 3)	90-11237-02	00002		
35	*Drive Assemblies (See Note 4)	N/A			
	NOTE 2: 17-02943-01 can be used as a substitute.				
	NOTE 3: 90-11237-01 can be used as a substitute.				
	Note 4: Drives are not part of this assembly and are shown for reference only. For more information on optional items, refer to the following MicroVAX 3100 Platform Maintenance Information manuals:				
	*Documentation, "Options Manual"	EK-A0519-MG			
	*Documentation, "BA42-A Enclosure Maint."	EK-A0510-MG			
	*Documentation, "BA42-B Enclosure Maint."	EK-A0511-MG			

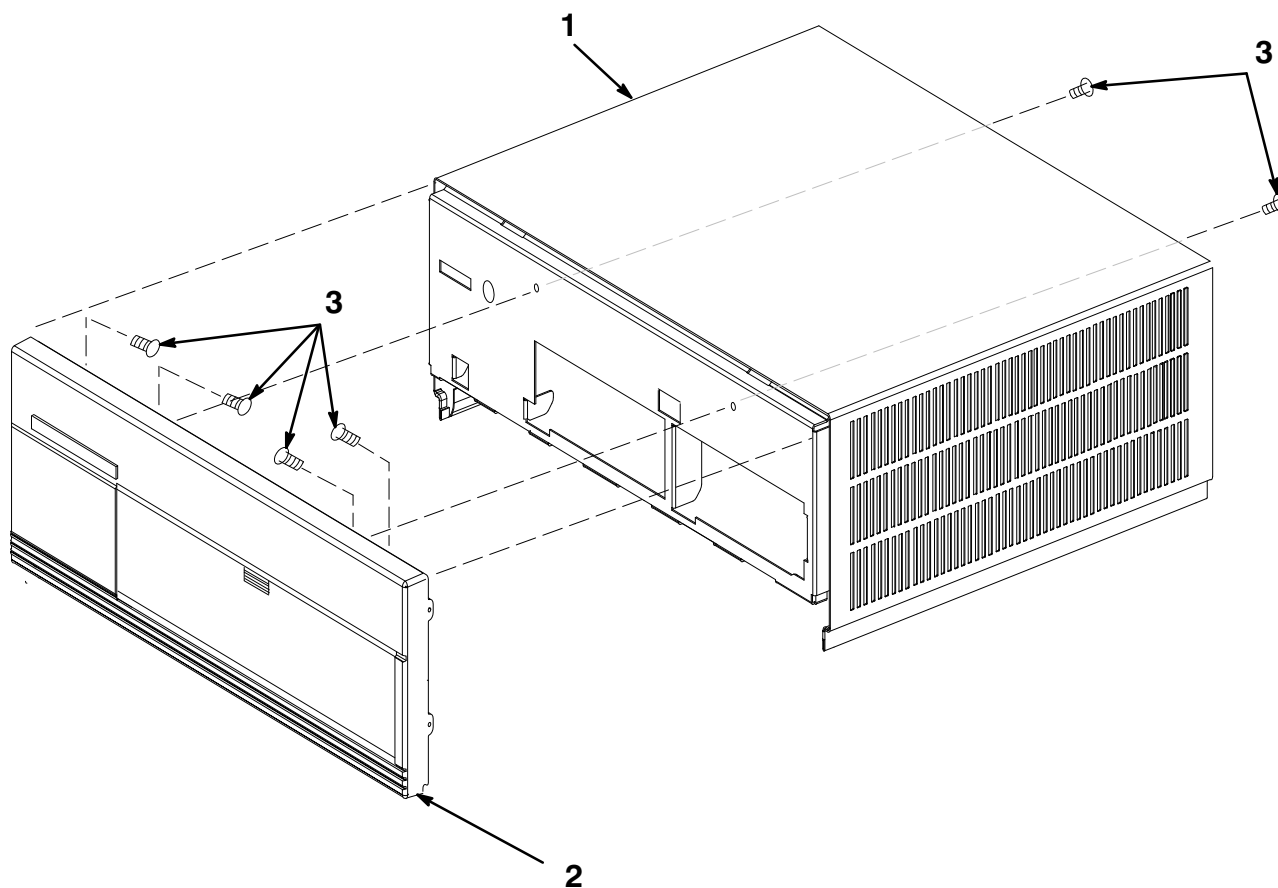
FIG.& ITEM NO.	DESCRIPTION	A DIGITAL PART NO.	ECO CUT-IN 70-27106 00000	USED ON CODE	REF FIG NO.
5-	BASE ASSEMBLY	70-27106-01			4,7,8 9,10
1	*Finger, Non-Snag Grounding	12-26922-01			
2	*Foot, Self Adhesive	12-35649-01			
3	*Insulation, CPU Sheet	12-39980-01			
4	*Base Detail, Model 40/80	74-41871-01			
5	*Gasket, CPU Grounding	74-42429-01			
6	*Cantilever, CPU Retention	74-42448-01			
7	*Rivet, Repetition Clinch .125	90-00052-01			



MV310-05-IL

**Figure 5. Base Assembly**

FIG.& ITEM NO.	DESCRIPTION	DIGITAL PART NO.	ECO CUT-IN 70-26167 00000	USED ON CODE	REF FIG NO.
6-	COVER ASSEMBLY	70-26167-01			4,7,8 9,10
1	*Cover (Weldment)	70-26169-01			
2	*Bezel Assembly, Front	70-26168-01			
3	*Screw, Self-Tap Flat Hd No. 4-20 x 3/16	90-10411-01			



MV310-06-IL

**Figure 6. Cover Assembly**

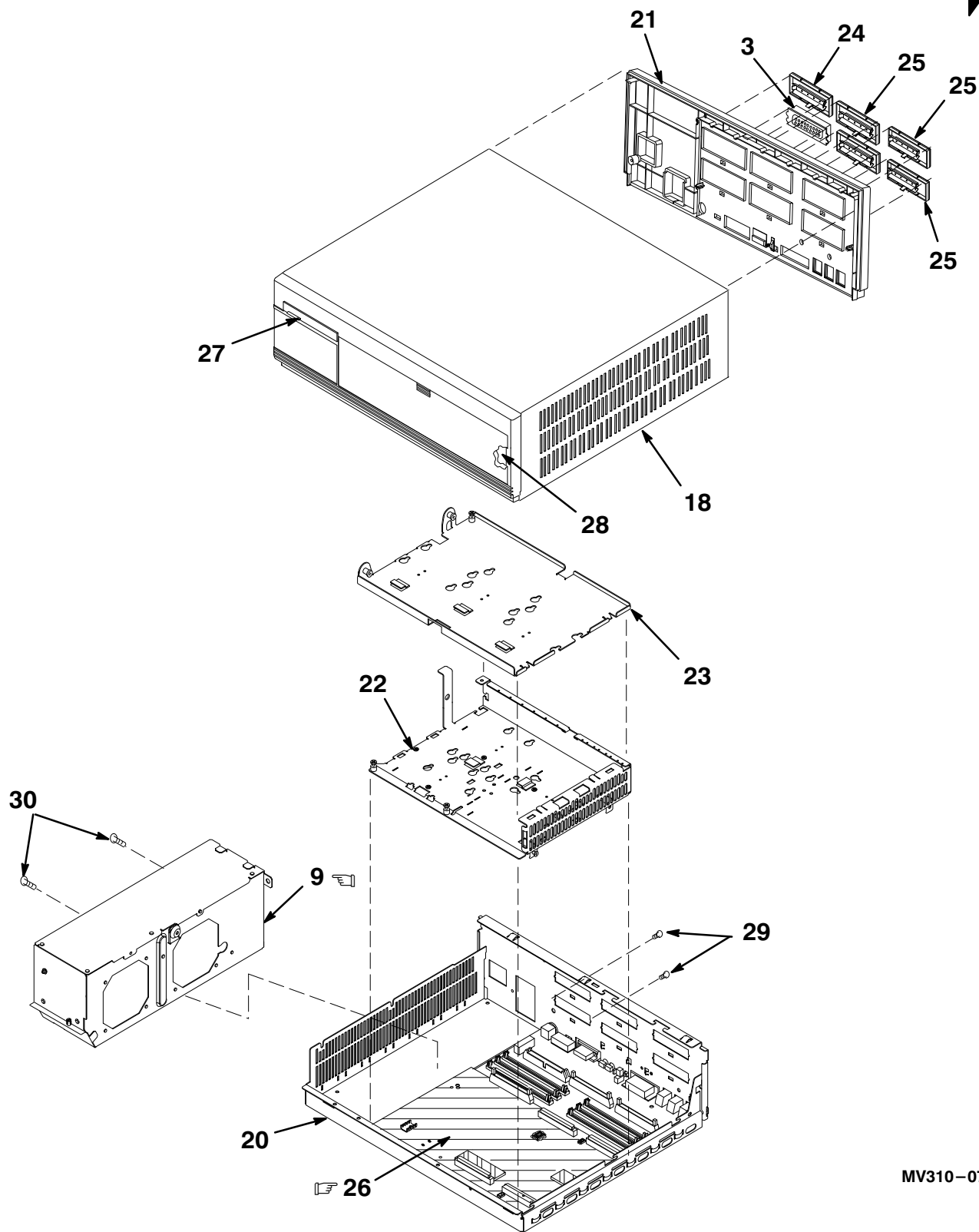
# **MicroVAX 3100**

## **MODEL 80**

THIS PAGE INTENTIONALLY LEFT BLANK

 INDICATES FRU LEVEL PARTS.


PARTS LIST 



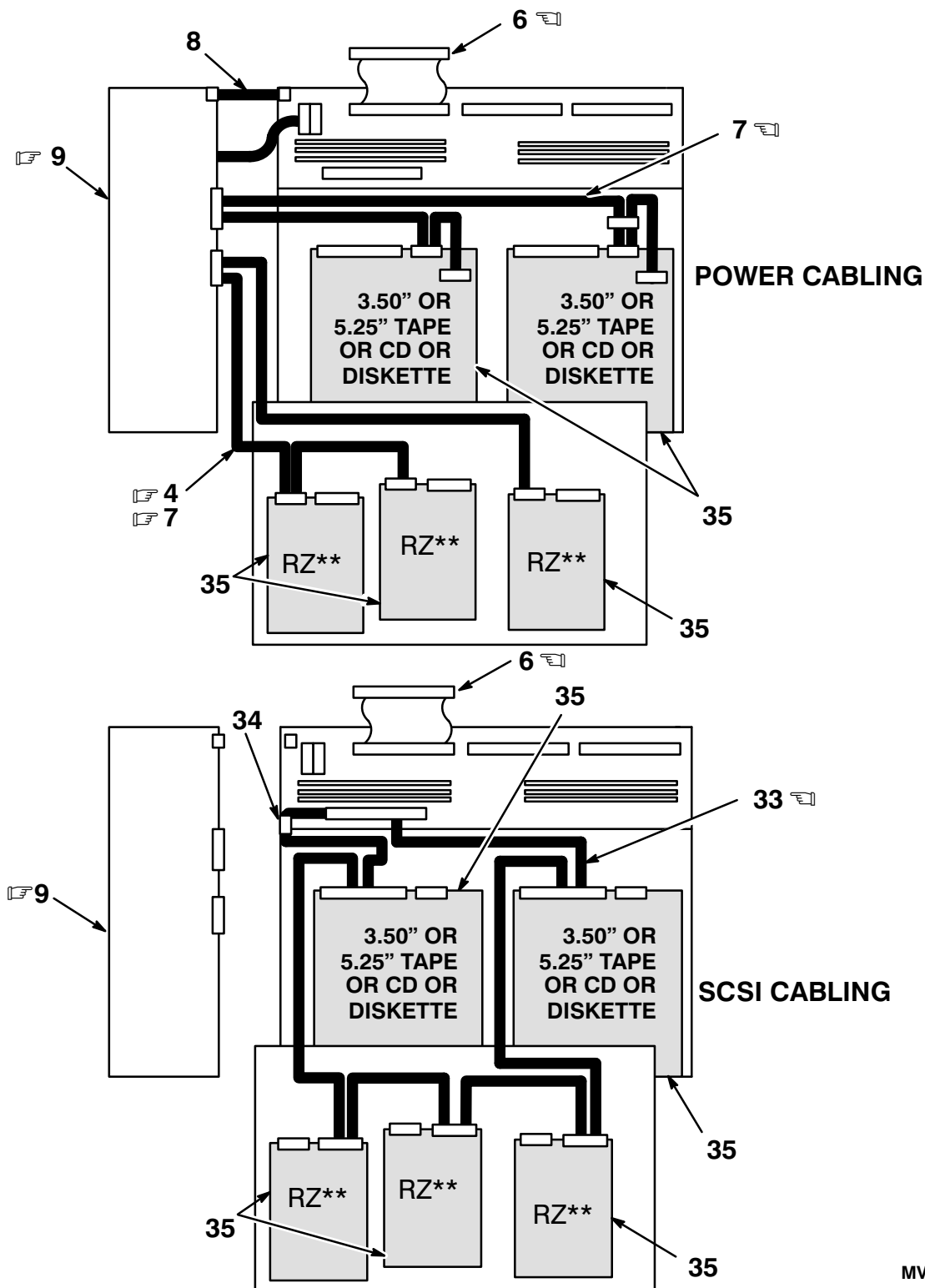
MV310-07-IL

**Figure 7. MicroVAX 3100 Model 80 System Building Block –  
KA47 MAR CPU Kernel, BA42B Enclosure (Sheet 1 of 2)**

 INDICATES FRU LEVEL PARTS.

 = OPTIONAL (SEE PART LIST)

PARTS LIST 



MV310-07A-IL

**Figure 7. MicroVAX 3100 Model 80 System Building Block –  
KA47 MAR CPU Kernel, BA42B Enclosure (Sheet 2 of 2)**

FIG. & ITEM NO.	DESCRIPTION	DIGITAL PART NO. <sup>A</sup>	ECO CUT-IN 470ZM 00000	USED ON CODE	REF FIG NO.
7-	MicroVAX 3100 MODEL 80, SBB (SYSTEM BUILDING BLOCK), KA47 MAR CPU BA42B ENCLOSURE	470ZM-B9			
1	*Cable, Oval 25 ft. Data BC16E-25 (Not Shown)	17-00811-03			
2	*Adapter, 25 Pin D-Sub to MMJ (Not Shown)	H8575-A			
3	*Connector, SCSI Term 50 Position Champ HSG	12-30552-01			
4	*Harness Assembly, Wire	17-02219-01			
5	NOT USED		00002		
6	*Cable Assembly, Flat 50 Way SCSI	17-02944-01			
7	*Cable Assembly, DC Harness	17-03018-01			
8	*Cable Assembly, Harness 3.3V	17-03136-01			
9	*Power Supply Assembly, 166 Watts 120V/240V	30-35042-01			
10	*Label, "PTT"	36-36015-02			
11	*Label, "Bar Code"	36-28231-07			
12	*Label, "Attention, Preinstalled Software"	36-28979-01			
13	*Label, "Regulatory Canada"	36-30382-23			
13	*Label, "Regulatory UK"	36-30382-24			
14	*Label, "FTZ Postcard"	36-30422-10			
15	*Label, "Diagnostic VS42A"	36-30489-01			
16	*Label, "Product ID"	36-36394-02			
17	*Package Assembly	37-01106-01			
18	*COVER ASSEMBLY	70-26167-01			6
19	*KIT, Thick/ThinWire ETHERNET (Not Shown)	70-26209-01			
19A	**Connector, 50 Ohms BNC Coax	12-26318-01			
19B	**Tee, BNC Coaxial	12-25869-01			
19C	**Connector, D-Sub 15 Position	12-22196-01			
20	*BASE ASSEMBLY,	70-27106-01			5
21	*Bezel Assembly, Rear	70-27107-01			
22	*Shelf, Lower Drive Assembly	70-27108-01			
23	*Shelf, Upper Drive Assembly	70-27109-01			
24	*Cover, FCC Blanking Option	70-28539-01			
25	*Cover, FCC Blanking Comms	70-28539-02			
	NOTE 1: Items 1,2 10-17, 19 and 32 are not shown.				

FIG. & ITEM NO.	DESCRIPTION	<sup>A</sup> DIGITAL PART NO.	ECO CUT-IN 470ZM 00000	USED ON CODE	REF FIG NO.
7-					
26	*MODULE ASSEMBLY, CPU 8MB MEMORY	70-29670-01			
26A	**Module, ECMB Parity Memory Option	MS44L-AA			
26B	**Module, CPU Assembly	54-20652-01			
26C	**Battery, 3 Cell 3.75V .18ma Nicad	12-19245-01			
27	*Medallion, MicroVAX 3100-80	74-37642-22			
28	*Insert, Bezel	74-38027-01			
29	*Screw, Sems Pan Hd No 4-40 x 3/8	90-09643-00			
30	*Screw, Sems Pan Hd No. 6-32 x 5/16	90-09984-07			
31	NOT USED				
32	*Documentation, "Guide To Using VMS" (Not Shown)	EK-A0377-UG			
33	*Cable Assembly, 5- Cond. Flat (added - replaces 17-02943-01)	17-03588-01	00002		
34	Clamp, Strain Relief Cable (added - replaces 90-11237-01)	90-11237-02	00002		
35	*Drive Assemblies (See Note)	N/A			
	Note 2: Drives are not part of this assembly and are shown for reference only. For more information on optional items, refer to the following MicroVAX 3100 Platform Maintenance Information manuals:				
	Documentation, Options Manual	EK-A0519-MG			
	Documentation, BA42-A Enclosure Maintenance	EK-A0510-MG			
	Documentation, BA42-B Enclosure Maintenance	EK-A0511-MG			

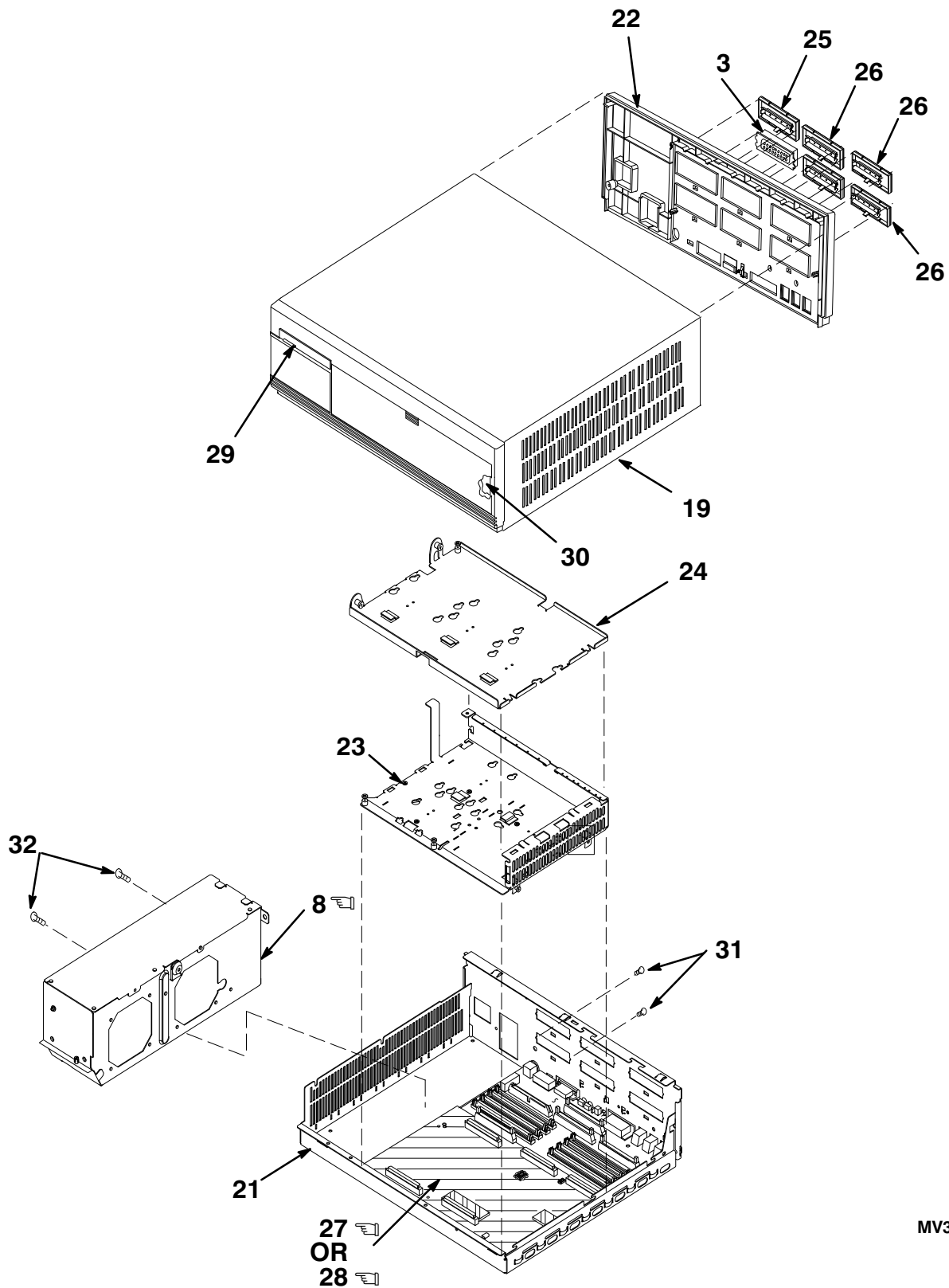
# **MicroVAX 3100**

## **MODEL 90**

THIS PAGE INTENTIONALLY LEFT BLANK

☞☞ INDICATES FRU LEVEL PARTS.


PARTS LIST



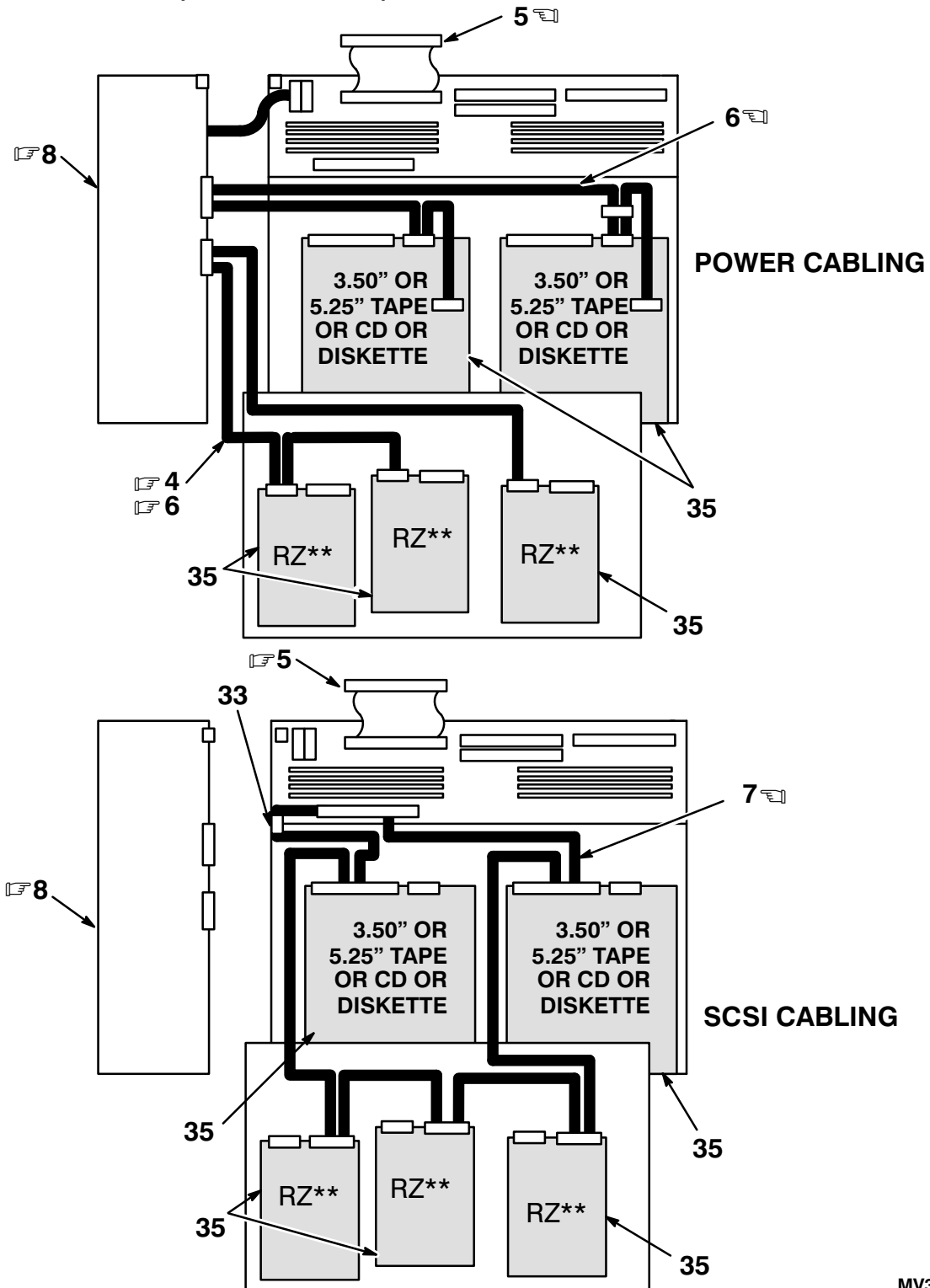
MV310-08-IL

**Figure 8. MicroVAX 3100 Model 90 System Building Block –  
KA50 NVAX CPU Kernel, BA42B Enclosure (Sheet 1 of 2)**

 INDICATES FRU LEVEL PARTS.

 = OPTIONAL (SEE PART LIST)

PARTS LIST 



MV310-08A-IL

**Figure 8. MicroVAX 3100 Model 90 System Building Block –  
KA50 NVAX CPU Kernel, BA42B Enclosure (Sheet 2 of 2)**

FIG.& ITEM NO.	DESCRIPTION	DIGITAL PART NO. <sup>A</sup>	ECO CUT-IN 47ZBM 00000	USED ON CODE	REF FIG NO.
8–	MicroVAX 3100 Model 90 SBB– KA50 NVAX CPU KERNEL, BA42B ENCLOSURE, 16 MB Mem. MicroVAX 3100 Model 90 SBB– KA50 NVAX CPU KERNEL, BA42B ENCLOSURE, 64 MB Mem.	47ZBM–A9  47ZBM–B9		A  B	
1	*Cable, Oval 25 ft. Data 6 Conductor (17–00811–03) (Not Shown)	BC16E–25			
2	*Adapter, 25 Pin D–Sub to MMJ (Not Shown)	H8575–A			
3	*Connector, SCSI Term 50 Position Champ HSG	12–30552–01			
4	*Harness Assembly, Wire	17–02219–01			
5	*Cable Assembly, Flat 50 Way SCSI	17–02944–01			
6	*Cable Assembly, DC Harness	17–03018–01			
7	*Cable Assembly, Flat 50 Way SCSI	17–03588–01			
8	*Power Supply Assembly, 166 Watts 120V/240V	30–35042–01			
9	*Label, “Bar Code”	36–28231–07			
10	*Label, “Attention, Preinstalled Software”	36–28979–01			
11	*Label, “Regulatory Canada”	36–30382–23			
11	*Label, “Regulatory UK”	36–30382–24			
12	*Label, “FTZ Postcard”	36–30422–10			
13	*Label, “Diagnostic VS42A”	36–30489–01			
14	*Label, “PTT”	36–36015–02			
15	*Label, “Product ID” BA42–B	36–36394–02			
16	*Label, “CE”	36–36842–01			
17	*Label, “OPA”	36–39380–01			
18	*Package Assembly	37–01106–01			
19	*COVER ASSEMBLY	70–26167–01			6
20	*KIT, Thick/ThinWire ETHERNET	70–26209–01			
20A	**Connector, 50 Ohms BNC Coax	12–26318–01			
20B	**Tee, BNC Coaxial	12–25869–01			
20C	**Connector, D–Sub 15 Position	12–22196–01			
21	*BASE ASSEMBLY,	70–27106–01			5
22	*Bezel Assembly, Rear	70–27107–01			
23	*Shelf, Lower Drive Assembly	70–27108–01			
24	*Shelf, Upper Drive Assembly	70–27109–01			
25	*Cover, FCC Blanking Option	70–28539–01			
26	*Cover, FCC Blanking Comms	70–28539–02			
	NOTE 1: Items 1, 2, 9–18, 20 and 34 are not shown.				

FIG.& ITEM NO.	DESCRIPTION	DIGITAL PART NO. <sup>A</sup>	ECO CUT-IN 47ZBM 00000	USED ON CODE	REF FIG NO.
8–					
☞ 27	*MODULE ASSEMBLY, CPU 16 MB MEMORY	70–29672–01		A	
☞ 27A	**Module, (4) ECMB Parity Memory Option	MS44L–AA			
☞ 27B	**Module, CPU Assembly	54–21797–01			
☞ 27C	**Battery, 3 Cell 3.75V .18 ma Nicad	12–19245–01			
28	*MODULE ASSEMBLY, CPU 64 MB MEMORY	70–29672–02		B	
☞ 28A	**Module, (4) ECMB Parity Memory Option	MS44–CA			
☞ 28B	**Module, CPU Assembly	54–21797–01			
☞ 28C	**Battery, 3 Cell 3.75V .18 ma Nicad	12–19245–01			
29	*Medallion, MicroVAX 3100–90	74–37642–27			
30	*Insert, Bezel	74–38027–01			
31	*Screw, Sems Pan Hd No 4–40 x 3/8	90–09643–00			
32	*Screw, Sems Pan Hd No. 6–32 x 5/16	90–09984–07			
33	*Clamp, Cable SCSI Loop (See Note 3)	90–11237–01			
34	*Documentation, “Guide To Using VMS”	EK–A0377–UG			
35	Drive Assemblies (See Note 2)	N/A			
	NOTE 2: Drives are not part of this assembly and are shown for reference only. For more information on optional items, refer to the following MicroVAX 3100 Platform Maintenance Information manuals:				
	Documentation, Options Manual	EK–A0519–MG			
	Documentation, BA42–B Enclosure Maintenance	EK–A0511–MG			
	NOTE 3: Use only with alternate cable, part number 17–02943–01.				

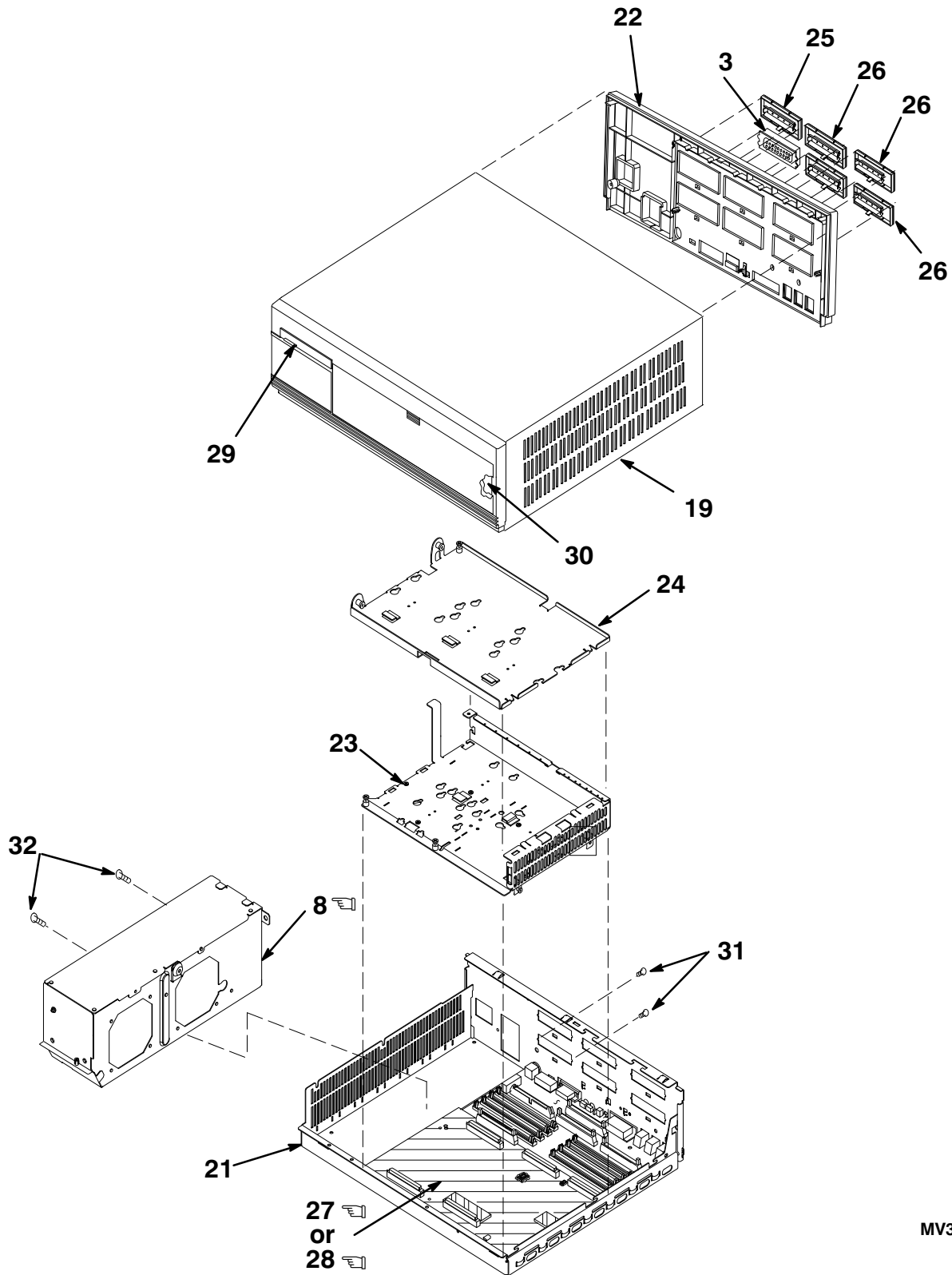
# **MicroVAX 3100**

## **MODEL 95**

THIS PAGE INTENTIONALLY LEFT BLANK

INDICATES FRU LEVEL PARTS.

PARTS LIST



MV310-09-IL

**Figure 9. MicroVAX 3100 Model 95 System Building Block, –  
KA51 NVAX CPU Kernel, BA42B Enclosure (Sheet 1 of 2)**



FIG.& ITEM NO.	DESCRIPTION	DIGITAL PART NO. <sup>A</sup>	ECO CUT-IN 48ZBM 00000	USED ON CODE	REF FIG NO.
9–	MicroVAX 3100 MODEL 95, SBB (SYSTEM BUILDING BLOCK) – KA51 NVAX CPU KERNEL, BA42B ENCLOSURE	48ZBM–C9		A	
	MicroVAX 3100 MODEL 95, SBB (SYSTEM BUILDING BLOCK) – KA51 NVAX CPU KERNEL, BA42B ENCLOSURE	48ZBM–D9		B	
1	*Cable, Oval 25 ft. Data (17–00811–03) 6 Conductor (Not Shown)	BC16E–25			
2	*Adapter, 25 Pin D–Sub to MMJ (Not Shown)	H8575–A			
3	*Connector, SCSI Term 50 Position Champ HSG	12–30552–01			
4	*Harness Assembly, Wire	17–02219–01			
5	*Cable Assembly, Flat 50 Way SCSI	17–02944–01			
6	*Cable Assembly, DC Harness	17–03018–01			
7	*Cable Assembly, Flat 50 Way SCSI	17–03588–01			
8	*Power Supply Assembly, 166 Watts 120V/240V	30–35042–01			
9	*Label, “Bar Code”	36–28231–07			
10	*Label, “Attention, Preinstalled Software”	36–28979–01			
11	*Label, “Regulatory Canada”	36–30382–23			
11	*Label, “Regulatory UK”	36–30382–24			
12	*Label, “FTZ Postcard”	36–30422–10			
13	*Label, “Diagnostic VS42A”	36–30489–01			
14	*Label, “PTT”	36–36015–02			
15	*Label, “Product ID” BA42–B”	36–36394–02			
16	*Label, “CE”	36–36842–01			
17	*Label, “OPA”	36–39380–01			
18	*Package Assembly	37–01106–01			
19	*COVER ASSEMBLY	70–26167–01			6
20	*KIT, Thick/ThinWire ETHERNET	70–26209–01			
20A	**Connector, 50 Ohms BNC Coax	12–26318–01			
20B	**Tee, BNC Coaxial	12–25869–01			
20C	**Connector, D–Sub 15 Position	12–22196–01			
21	*BASE ASSEMBLY,	70–27106–01			5
22	*Bezel Assembly, Rear	70–27107–01			
23	*Shelf, Lower Drive Assembly	70–27108–01			
24	*Shelf, Upper Drive Assembly	70–27109–01			
25	*Cover, FCC Blanking Option	70–28539–01			
26	*Cover, FCC Blanking Comms	70–28539–02			
	NOTE 1: Items 1, 2, 9–18, 20 and 34 are not shown.				

FIG.& ITEM NO.	DESCRIPTION	DIGITAL PART NO. <sup>A</sup>	ECO CUT-IN 48ZBM 00000	USED ON CODE	REF FIG NO.
9–					
☞ 27	*MODULE ASSEMBLY, CPU 16 MB MEMORY	70–29672–03		A	
☞ 27A	**Module, (4) ECMB Parity Memory Option	MS44L–AA			
☞ 27B	**Module, CPU Assembly	54–21797–01			
☞ 27C	**Battery, 3 Cell 3.75V .18 ma Nicad	12–19245–01			
☞ 28	*MODULE ASSEMBLY, CPU 64 MB MEMORY	70–29672–04		B	
☞ 28A	**Module, (4) ECMB Parity Memory Option	MS44–CA			
☞ 28B	**Module, CPU Assembly	54–21797–01			
☞ 28C	**Battery, 3 Cell 3.75V .18 ma Nicad	12–19245–01			
29	*Medallion, MicroVAX 3100–90	74–37642–27			
30	*Insert, Bezel	74–38027–01			
31	*Screw, Sems Pan Hd No 4–40 x 3/8	90–09643–00			
32	*Screw, Sems Pan Hd No. 6–32 x 5/16	90–09984–07			
33	*Clamp, Cable SCSI Loop (See Note 3)	90–11237–01			
34	*Documentation, “Guide To Using VMS”	EK–A0377–UG			
35	Drive Assemblies (See Note 2)	N/A			
	Note 2: Drives are not part of this assembly and are shown for reference only. For more information on optional items, refer to the following MicroVAX 3100 Platform Maintenance Information manuals:				
	Documentation, Options Manual	EK–A0519–MG			
	Documentation, BA42–B Enclosure Maintenance	EK–A0511–MG			
	Note 3: Use only with alternate cable, part number 17–02943–01.				

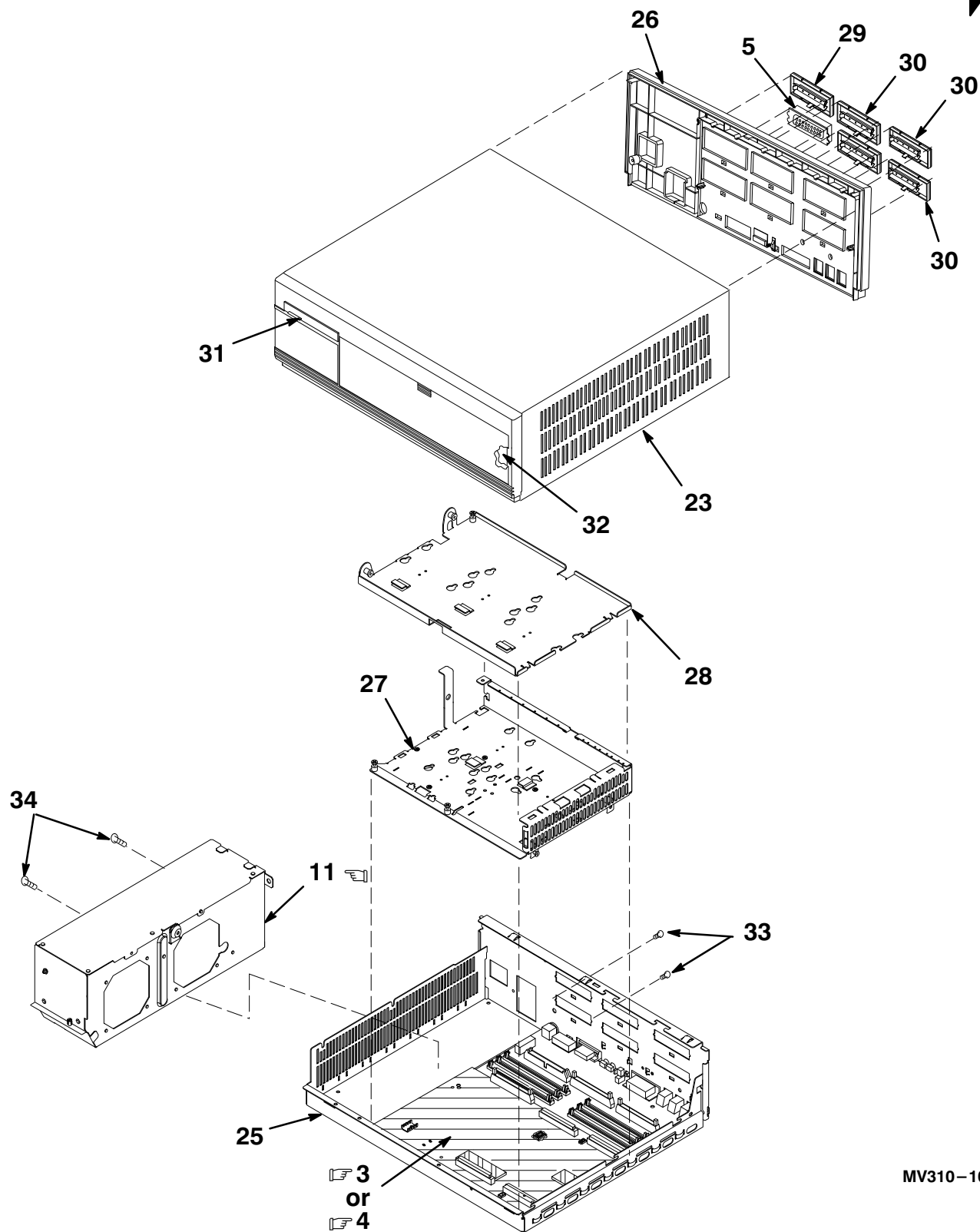
# **MicroVAX 3100**

## **MODEL 85**

THIS PAGE INTENTIONALLY LEFT BLANK

 INDICATES FRU LEVEL PARTS.

PARTS LIST 



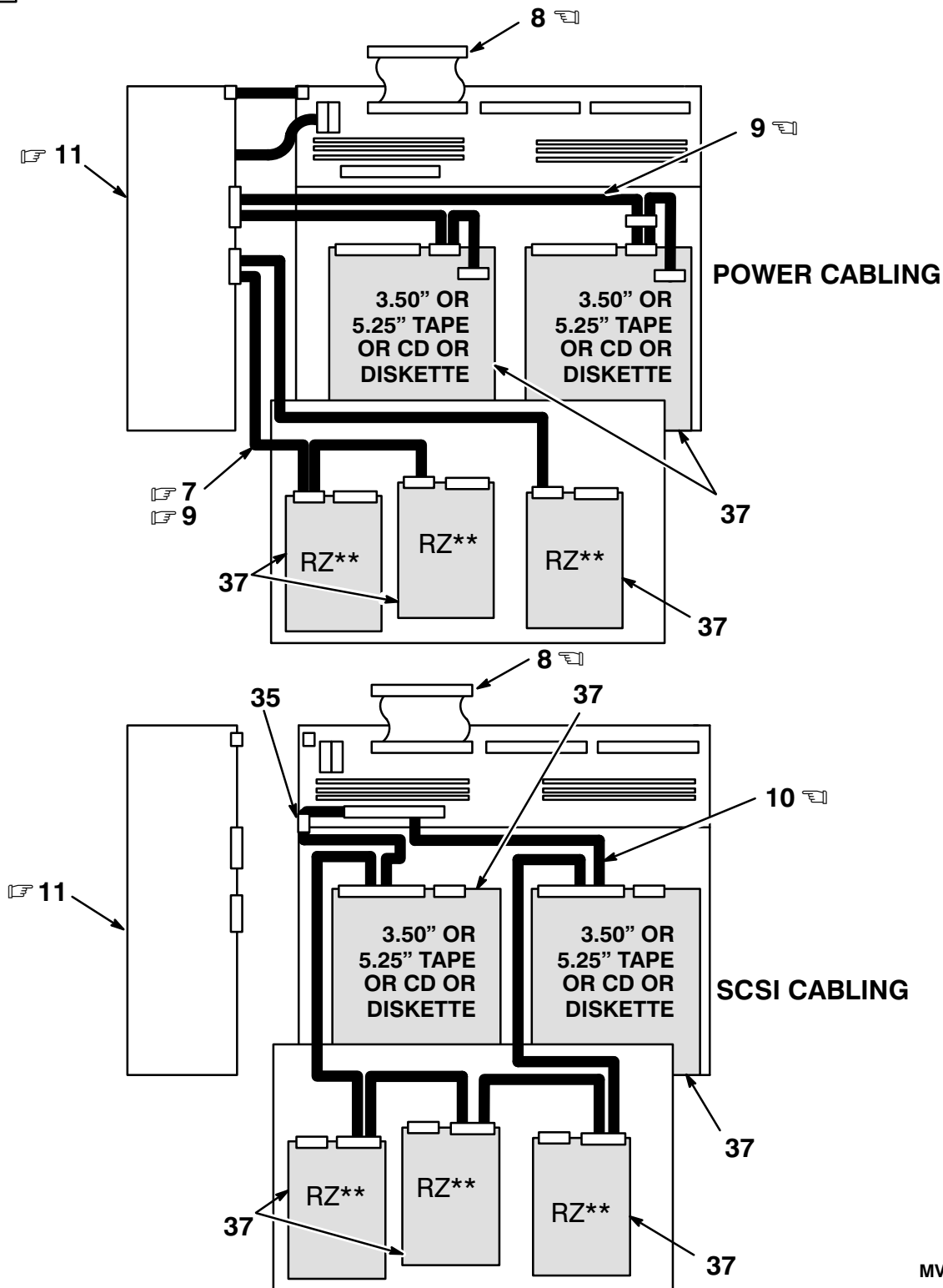
MV310-10-IL

**Figure 10. MicroVAX 3100 Model 85 System Building Block,  
KA55 CPU Kernel, BA42B Enclosure (Sheet 1 of 2)**

 INDICATES FRU LEVEL PARTS.

 = OPTIONAL (SEE PART LIST)

PARTS LIST 



MV310-10A-IL

**Figure 10. MicroVAX 3100 Model 85 System Building Block –  
KA55 CPU Kernel, BA42B Enclosure (Sheet 2 of 2)**

FIG.& ITEM NO.	DESCRIPTION	DIGITAL PART NO. <sup>A</sup>	ECO CUT-IN 46ZBM 00000	USED ON CODE	REF FIG NO.
10–	MicroVAX 3100 MODEL 85 SYSTEM BUILDING BLOCK – KA55 CPU, BA42B KERNEL ENCLOSURE, 16MB, 120/240V	46ZBM–A9		A	
	MicroVAX MODEL 85 – SYSTEM BUILDING BLOCK – KA55 CPU, BA42B KERNEL ENCLOSURE, 64MB, 120/240V	46ZBM–B9		B	
1	*Cable, Oval 25 ft. Data (17–00811–03) (Not Shown)	BC16E–25			
2	*Adapter, 25 Pin D–Sub to MMJ (Not Shown)	H8575–A			
3	*Module, 64MB Memory for VAXstation 4000–90	MS44–DC		B	
4	*Module, 16MB Memory for VAXstation 4000–90	MS44L–DC		A	
5	*Connector, SCSI Term 50 Position Champ HSG	12–30552–01			
6	*Cord, Power Term SVT 125 V	17–00606–02			
7	*Harness Assembly, Wire	17–02219–01			
8	*Cable Assembly, Flat 50 Way SCSI	17–02944–01			
9	*Cable Assembly, DC Harness MHO/80 WAV	17–03018–01			
10	*Cable Assembly, 50 Conductor Flat	17–03588–01			
11	*Power Supply Assembly, 166 Watts, 120V/240V, +5V@15A, +12V@	30–35042–01			
12	*Label, “Attention, Preinstalled Software”	36–28979–01			
13	*Label, “Regulatory Canada”	36–30382–23			
14	*Label, “Regulatory UK”	36–30382–24			
15	*Label, “FTZ Postcard, Series BA42B”	36–30422–10			
16	*Label, “Diagnostic VS42A”	36–30489–01			
17	*Label, “VAX 4000–1XXA, PTT Regulation”	36–36015–03			
18	*Label, “Product ID”	36–36394–02			
19	*Label, “CE Mark”	36–36842–01			
20	*Label, OPA0 Console Port Arrow	36–39380–01			
21	*Package Assembly	37–01106–08			
22	*Module, NVAX CPU, 128K Cache, 16NS, SCSI	54–21797–04			
23	*COVER ASSEMBLY	70–26167–01			6
24	*KIT, Thick/ThinWire ETHERNET (Not Shown)	70–26209–01			
24A	**Connector, 50 Ohms BNC Coax	12–26318–01			
24B	**Tee, BNC Coaxial	12–25869–01			
24C	**Connector, D–Sub 15 Position	12–22196–01			
	NOTE 1: Items 1, 2, 6, 12–21, and 36 are not shown,				

FIG.& ITEM NO.	DESCRIPTION	<sup>A</sup> DIGITAL PART NO.	ECO CUT-IN 46ZBM 00000	USED ON CODE	REF FIG NO.
10–					
25	*BASE ASSEMBLY, M40	70–27106–01			5
26	*Bezel Assembly, Rear	70–27107–01			
27	*Shelf, Lower Drive Assembly	70–27108–01			
28	*Shelf, Upper Drive Assembly	70–27109–01			
29	*Cover, FCC Blanking Option	70–28539–01			
30	*Cover, FCC Blanking Comms	70–28539–02			
31	*Medallion, MicroVAX 3100–85	74–37642–33			
32	*Insert, Bezel	74–38027–01			
33	*Screw, Sems Pan Hd No 4–40 x .375 XRCS	90–09643–00			
34	*Screw, Sems Pan Hd No. 6–32 x .312 XRCS	90–09984–07			
35	*Clamp, Strain Relief Cable (See Note 2)	90–11237–02			
36	*Bag, Poly Reclose	99–06557–30			
37	*Drive Assemblies	N/A			
	<p><b>Note 2:</b> Drives are not part of this assembly and are shown for reference only. For more information on optional items, refer to the following MicroVAX 3100 Platform Maintenance Information manuals:</p> <p>Documentation, Options Manual EK–A0519–MG  Documentation, BA42–A Enclosure Maintenance EK–A0510–MG  Documentation, BA42–B Enclosure Maintenance EK–A0511–MG</p> <p><b>Note 2:</b> 90-1237–01 can be used as a substitute.</p>				
					Ω

# **PART NUMBER/DESCRIPTION INDEX**

**THIS PAGE INTENTIONALLY LEFT BLANK**

**INDEX BY DIGITAL PART NUMBER**  
**MicroVAX 3100 MODELS 30/40/80/85/90/95**

PART NO.	DESCRIPTION	FIG NO.	ITEM NO.
12-19245-01	Battery, 3 Cell 3.75V .18 ma Nicad	1	17A
12-19245-01	Battery, 3 Cell 3.75V .18 ma Nicad	4	18A
12-19245-01	Battery, 3 Cell 3.75V .18 ma Nicad	8	27C
12-19245-01	Battery, 3 Cell 3.75V .18 ma Nicad	8	28C
12-19245-01	Battery, 3 Cell 3.75V .18 ma Nicad	9	27C
12-19245-01	Battery, 3 Cell 3.75V .18 ma Nicad	9	28C
12-19245-01	Battery, 3 Cell 3.75V .18ma Nicad	7	26C
12-22196-01	Connector, D-Sub 15 Position	1	19C
12-22196-01	Connector, D-Sub 15 Position	10	24C
12-22196-01	Connector, D-Sub 15 Position	4	20C
12-22196-01	Connector, D-Sub 15 Position	7	19C
12-22196-01	Connector, D-Sub 15 Position	8	20C
12-22196-01	Connector, D-Sub 15 Position	9	20C
12-25869-01	Tee, BNC Coax	1	19B
12-25869-01	Tee, BNC Coaxial	10	24B
12-25869-01	Tee, BNC Coaxial	4	20B
12-25869-01	Tee, BNC Coaxial	7	19B
12-25869-01	Tee, BNC Coaxial	8	20B
12-25869-01	Tee, BNC Coaxial	9	20B
12-26318-01	Connector, 50 Ohms BNC Coax	1	19A
12-26318-01	Connector, 50 Ohms BNC Coax	10	24A
12-26318-01	Connector, 50 Ohms BNC Coax	4	20A
12-26318-01	Connector, 50 Ohms BNC Coax	7	19A
12-26318-01	Connector, 50 Ohms BNC Coax	8	20A
12-26318-01	Connector, 50 Ohms BNC Coax	9	20A
12-26922-01	Finger, Non-Snag Grounding	5	1
12-26922-01	Finger, Non-Snag Grounding (For EOS)	2	1
12-30552-01	Connector, SCSI Term 50 Position Champ HSG	1	4
12-30552-01	Connector, SCSI Term 50 Position Champ HSG	10	5
12-30552-01	Connector, SCSI Term 50 Position Champ HSG	4	3
12-30552-01	Connector, SCSI Term 50 Position Champ HSG	7	3
12-30552-01	Connector, SCSI Term 50 Position Champ HSG	8	3
12-30552-01	Connector, SCSI Term 50 Position Champ HSG	9	3
12-35649-01	Foot, Self Adhesive	2	2
12-35649-01	Foot, Self Adhesive	5	2
12-39980-01	Insulation, CPU Sheet	5	3
12-39980-01	Sheet, CPU Insulation	2	3
16-34255-02	Ferrite, Bead 50 Conductor Cable	1	5
16-34255-02	Ferrite, Bead 50 Conductor Cable (added)	4	4
17-00606-02	Cord, Power Term SVT 125 V	10	6
17-02219-01	Harness Assembly, Wire	10	7
17-02219-01	Harness Assembly, Wire	4	5
17-02219-01	Harness Assembly, Wire	7	4
17-02219-01	Harness Assembly, Wire	8	4
17-02219-01	Harness Assembly, Wire	9	4
17-02944-01	Cable Assembly, Flat 50 Way SCSI	10	8
17-02944-01	Cable Assembly, Flat 50 Way SCSI	4	6
17-02944-01	Cable Assembly, Flat 50 Way SCSI	7	6
17-02944-01	Cable Assembly, Flat 50 Way SCSI	9	5
17-02944-01	Cable Assembly, Flat 50 Way SCSI	1	6
17-02944-01	Cable Assembly, Flat 50 Way SCSI	8	5
17-03016-01	Cable Assembly, Round SCSI 50 Way	1	7

**INDEX BY DIGITAL PART NUMBER**  
**MicroVAX 3100 MODELS 30/40/80/85/90/95**

<b>PART NO.</b>	<b>DESCRIPTION</b>	<b>FIG NO.</b>	<b>ITEM NO.</b>
17-03017-01	Cable Assembly, DC Harness	1	8
17-03018-01	Cable Assembly, DC Harness	4	8
17-03018-01	Cable Assembly, DC Harness	7	7
17-03018-01	Cable Assembly, DC Harness	8	6
17-03018-01	Cable Assembly, DC Harness	9	6
17-03018-01	Cable Assembly, DC Harness MHO/80 WAV	10	9
17-03136-01	Cable Assembly, Harness 3.3V	7	8
17-03588-01	Cable Assembly, Flat 50 Way SCSI	8	7
17-03588-01	Cable Assembly, Flat 50 Way SCSI	9	7
17-03588-01	Cable Assembly, 5- Cond. Flat	7	33
17-03588-01	Cable Assembly, 50 Conductor Flat	10	10
17-03588-01	Cable, Flat 50 Cond. Strain Relief	4	33
30-35042-01	Power Supply Assembly, 166 Watts 120V/240V	4	9
30-35042-01	Power Supply Assembly, 166 Watts 120V/240V	7	9
30-35042-01	Power Supply Assembly, 166 Watts 120V/240V	8	8
30-35042-01	Power Supply Assembly, 166 Watts 120V/240V	9	8
30-35042-01	Power Supply Assembly, 166 Watts, 120V/240V, 5+@15A, +12V@	10	11
36-28231-07	Label, "Bar Code"	1	9
36-28231-07	Label, "Bar Code"	4	10
36-28231-07	Label, "Bar Code"	7	11
36-28231-07	Label, "Bar Code"	8	9
36-28231-07	Label, "Bar Code"	9	9
36-28979-01	Label, "Attention, Preinstalled Software"	1	10
36-28979-01	Label, "Attention, Preinstalled Software"	10	12
36-28979-01	Label, "Attention, Preinstalled Software"	4	11
36-28979-01	Label, "Attention, Preinstalled Software"	7	12
36-28979-01	Label, "Attention, Preinstalled Software"	8	10
36-28979-01	Label, "Attention, Preinstalled Software"	9	10
36-30382-21	Label, "Regulatory USA/Canada"	1	11
36-30382-22	Label, "Regulatory UK"	1	11
36-30382-23	Label, "Regulatory Canada"	10	13
36-30382-23	Label, "Regulatory Canada"	4	12
36-30382-23	Label, "Regulatory Canada"	7	13
36-30382-23	Label, "Regulatory Canada"	8	11
36-30382-23	Label, "Regulatory Canada"	9	11
36-30382-24	Label, "Regulatory UK"	10	14
36-30382-24	Label, "Regulatory UK"	4	12
36-30382-24	Label, "Regulatory UK"	7	13
36-30382-24	Label, "Regulatory UK"	8	11
36-30382-24	Label, "Regulatory UK"	9	11
36-30422-05	Label, "FTZ Postcard"	1	12
36-30422-10	Label, "FTZ Postcard"	4	13
36-30422-10	Label, "FTZ Postcard"	7	14
36-30422-10	Label, "FTZ Postcard"	8	12
36-30422-10	Label, "FTZ Postcard"	9	12
36-30422-10	Label, "FTZ Postcard, Series BA42B"	10	15
36-30489-01	Label, "Diagnostic VS42A"	1	13
36-30489-01	Label, "Diagnostic VS42A"	10	16
36-30489-01	Label, "Diagnostic VS42A"	4	14
36-30489-01	Label, "Diagnostic VS42A"	7	15
36-30489-01	Label, "Diagnostic VS42A"	8	13
36-30489-01	Label, "Diagnostic VS42A"	9	13
36-36015-01	Label, "PTT Regulatory"	1	14

**INDEX BY DIGITAL PART NUMBER**  
**MicroVAX 3100 MODELS 30/40/80/85/90/95**

<b>PART NO.</b>	<b>DESCRIPTION</b>	<b>FIG NO.</b>	<b>ITEM NO.</b>
36-36015-02	Label, "PTT"	4	15
36-36015-02	Label, "PTT"	7	10
36-36015-02	Label, "PTT"	8	14
36-36015-02	Label, "PTT"	9	14
36-36015-03	Label, "VAX 4000-1XXA, PTT Regulation"	10	17
36-36394-01	Label, "Product ID"	1	15
36-36394-02	Label, "Product ID" BA42-B"	9	15
36-36394-02	Label, "Product ID"	10	18
36-36394-02	Label, "Product ID"	4	16
36-36394-02	Label, "Product ID"	7	16
36-36394-02	Label, "Product ID" BA42-B"	8	15
36-36842-01	Label, "CE Mark"	10	19
36-36842-01	Label, "CE"	8	16
36-36842-01	Label, "CE"	9	16
36-39380-01	Label, "OPA"	8	17
36-39380-01	Label, "OPA"	9	17
36-39380-01	Label, "OPA0 Console Port Arrow"	10	20
37-01106-01	Package Assembly	4	17
37-01106-01	Package Assembly	7	17
37-01106-01	Package Assembly	8	18
37-01106-01	Package Assembly	9	18
37-01106-08	Package Assembly	10	21
37-01107-01	Package Assembly	1	16
450ZM-B9	MicroVAX 3100 MODEL 40,SSB (SYSTEM BUILDING BLOCK) KA45 CPU KERNEL, BA42 ENCLOSURE	4	N/A
450ZN-B9	MicroVAX MODEL 30 SSB (SYSTEM BUILDING BLOCK),KA45 CPU KERNEL , BA42A ENCLOSURE	1	N/A
46ZBM-A9	MicroVAX 3100 MODEL 85 SYSTEM SSB, KA55 CPU KERNEL, BA42B ENCLOSURE	10	N/A
46ZBM-B9	MicroVAX 3100 MODEL 85 SYSTEM SSB, KA55 CPU KERNEL, BA42B ENCLOSURE	10	N/A
470ZM-B9	MICROVAX 3100 MODEL 80, SSB, KA47 MAR CPU KERNEL, BA42 ENCLOSURE	7	N/A
47ZBM-A9	MicroVAX 3100 Model 90 SSB, KA50 NVAX CPU KERNEL, BA42B ENCLOSURE, 16 MB MEM.	8	N/A
47ZBM-B9	MicroVAX 3100 Model 90 SSB, KA50 NVAX CPU KERNEL, BA42 ENCLOSURE, 64 MB MEM.	8	N/A
48ZBM-C9	MicroVAX 3100 MODEL 95, SSB, KA51 NVAX CPU KERNEL, BA42B ENCLOSURE	9	N/A
48ZBM-D9	MicroVAX 3100 MODEL 95, SSB, KA51 NVAX CPU KERNEL, BA42B ENCLOSURE	9	N/A
54-20652-01	Module, CPU Assembly	7	26B
54-20654-01	MODULE ASSEMBLY, SOC CPU	1	17
54-20654-01	MODULE ASSEMBLY, SOC CPU	4	18
54-21797-01	Module, CPU Assembly	8	27B
54-21797-01	Module, CPU Assembly	8	28B
54-21797-01	Module, CPU Assembly	9	27B
54-21797-01	Module, CPU Assembly	9	28B
54-21797-04	Module, NVAX CPU, 128K Cache, 16NS, SCSI	10	22
70-25726-01	ENCLOSURE ASSEMBLY, TOP	1	18
70-25726-01	ENCLOSURE ASSEMBLY, TOP	3	N/A
70-25786-01	Enclosure, Top (Weldment)	3	1
70-25797-01	Bezel Assembly, Front	3	2

**INDEX BY DIGITAL PART NUMBER**  
**MicroVAX 3100 MODELS 30/40/80/85/90/95**

<b>PART NO.</b>	<b>DESCRIPTION</b>	<b>FIG NO.</b>	<b>ITEM NO.</b>
70-26167-01	COVER ASSEMBLY	10	23
70-26167-01	COVER ASSEMBLY	4	19
70-26167-01	COVER ASSEMBLY	6	N/A
70-26167-01	COVER ASSEMBLY	7	18
70-26167-01	COVER ASSEMBLY	8	19
70-26167-01	COVER ASSEMBLY	9	19
70-26168-01	Bezel Assembly, Front	6	2
70-26169-01	Cover (Weldment)	6	1
70-26209-01	KIT, Thick/ThinWire ETHERNET	1	19
70-26209-01	KIT, Thick/ThinWire ETHERNET	10	24
70-26209-01	KIT, Thick/ThinWire ETHERNET	4	20
70-26209-01	KIT, Thick/ThinWire ETHERNET	7	19
70-26209-01	KIT, Thick/ThinWire ETHERNET	8	20
70-26209-01	KIT, Thick/ThinWire ETHERNET	9	20
70-27106-01	BASE ASSEMBLY	4	21
70-27106-01	BASE ASSEMBLY	5	N/A
70-27106-01	BASE ASSEMBLY,	7	20
70-27106-01	BASE ASSEMBLY,	8	21
70-27106-01	BASE ASSEMBLY,	9	21
70-27106-01	BASE ASSEMBLY, M40	10	25
70-27107-01	Bezel Assembly, Rear	10	26
70-27107-01	Bezel Assembly, Rear	4	22
70-27107-01	Bezel Assembly, Rear	7	21
70-27107-01	Bezel Assembly, Rear	8	22
70-27107-01	Bezel Assembly, Rear	9	22
70-27108-01	Shelf, Lower Drive Assembly	10	27
70-27108-01	Shelf, Lower Drive Assembly	4	23
70-27108-01	Shelf, Lower Drive Assembly	7	22
70-27108-01	Shelf, Lower Drive Assembly	8	23
70-27108-01	Shelf, Lower Drive Assembly	9	23
70-27109-01	Shelf, Upper Drive Assembly	10	28
70-27109-01	Shelf, Upper Drive Assembly	4	24
70-27109-01	Shelf, Upper Drive Assembly	7	23
70-27109-01	Shelf, Upper Drive Assembly	8	24
70-27109-01	Shelf, Upper Drive Assembly	9	24
70-28535-01	BASE ASSEMBLY	1	20
70-28535-01	BASE ASSEMBLY	2	N/A
70-28536-01	Bezel Assembly, Rear	1	21
70-28537-01	Shelf, Lower Drive Assembly	1	22
70-28539-01	Cover, FCC Blanking Option	10	29
70-28539-01	Cover, FCC Blanking Option	4	25
70-28539-01	Cover, FCC Blanking Option	7	24
70-28539-01	Cover, FCC Blanking Option	8	25
70-28539-01	Cover, FCC Blanking Option	9	25
70-28539-02	Cover, FCC Blanking	1	23
70-28539-02	Cover, FCC Blanking Comms	10	30
70-28539-02	Cover, FCC Blanking Comms	4	26
70-28539-02	Cover, FCC Blanking Comms	7	25
70-28539-02	Cover, FCC Blanking Comms	8	26
70-28539-02	Cover, FCC Blanking Comms	9	26
70-29670-01	MODULE ASSEMBLY, CPU 8MB MEMORY	7	26
70-29672-01	MODULE ASSEMBLY, CPU 16 MB MEMORY	8	27
70-29672-02	MODULE ASSEMBLY, CPU 64 MB MEMORY	8	28
70-29672-03	MODULE ASSEMBLY, CPU 16 MB MEMORY	9	27

**INDEX BY DIGITAL PART NUMBER**  
**MicroVAX 3100 MODELS 30/40/80/85/90/95**

<b>PART NO.</b>	<b>DESCRIPTION</b>	<b>FIG NO.</b>	<b>ITEM NO.</b>
70-29672-04	MODULE ASSEMBLY, CPU 64 MB MEMORY	9	28
74-37499-02	Insert, Blank Bezel FCC Shield	1	24
74-37642-20	Medallion, MicroVAX 3100 Model 30	1	25
74-37642-21	Medallion, MicroVAX 3100-40	4	27
74-37642-22	Medallion, MicroVAX 3100-80	7	27
74-37642-27	Medallion, MicroVAX 3100-90	8	29
74-37642-27	Medallion, MicroVAX 3100-90	9	29
74-37642-33	Medallion, MicroVAX 3100-85	10	31
74-38027-01	Insert, Bezel	10	32
74-38027-01	Insert, Bezel	4	28
74-38027-01	Insert, Bezel	7	28
74-38027-01	Insert, Bezel	8	30
74-38027-01	Insert, Bezel	9	30
74-41871-01	Base Detail, Model 40/80	5	4
74-42108-01	Base Detail, Model 30	2	4
74-42429-01	Gasket, CPU Grounding	2	5
74-42429-01	Gasket, CPU Grounding	5	5
74-42448-01	Cantilever, CPU Retention	2	6
74-42448-01	Cantilever, CPU Retention	5	6
90-00052-01	Rivet, Repetition Clinch .125	5	7
90-00052-01	Rivet, Repetition Clinch .125 DIA	2	7
90-09643-00	Screw, Sems Pan Hd No 4-40 x .375 XRCS	10	33
90-09643-00	Screw, Sems Pan Hd No 4-40 x 3/8	4	29
90-09643-00	Screw, Sems Pan Hd No 4-40 x 3/8	7	29
90-09643-00	Screw, Sems Pan Hd No 4-40 x 3/8	8	31
90-09643-00	Screw, Sems Pan Hd No 4-40 x 3/8	9	31
90-09643-00	Screw, Sems Pan Hd No. 4-40 x .375	1	26
90-09984-07	Screw, Sems Pan Hd No. 6-32 x .312	1	27
90-09984-07	Screw, Sems Pan Hd No. 6-32 x .312 XRCS	10	34
90-09984-07	Screw, Sems Pan Hd No. 6-32 x 5/16	4	30
90-09984-07	Screw, Sems Pan Hd No. 6-32 x 5/16	7	30
90-09984-07	Screw, Sems Pan Hd No. 6-32 x 5/16	8	32
90-09984-07	Screw, Sems Pan Hd No. 6-32 x 5/16	9	32
90-10411-01	Screw, Self-Tap Flat Hd No. 4-20 x 3/16	3	4
90-10411-01	Screw, Self-Tap Flat Hd No. 4-20 x 3/16	6	3
90-11237-01	Clamp, Cable SCSI Loop	8	33
90-11237-01	Clamp, Cable SCSI Loop	9	33
90-11237-01	Clamp, Cable SCSI Loop - Lower Shelf	1	28
90-11237-02	Clamp, Strain Relief Cable	10	35
90-11237-02	Clamp, Strain Relief Cable	4	34
90-11237-02	Clamp, Strain Relief Cable	7	34
99-06557-30	Bag, Poly Reclose	10	36
BC16E-25	Cable, 25 ft. Data (17-00811-03)	1	1
BC16E-25	Cable, Oval 25 ft. Data (17-00811-03)	10	1
BC16E-25	Cable, Oval 25 ft. Data (17-00811-03)	4	1
BC16E-25	Cable, Oval 25 ft. Data (17-00811-03)	7	1
BC16E-25	Cable, Oval 25 ft. Data 6 Conductor (17-00811-03)	9	1
BC16E-25	Cable, Oval 25 ft. Data 6Conductor (17-00811-03)	8	1
EK-A0377-UG	Documentation, "Guide To Using VMS"	4	32
EK-A0377-UG	Documentation, "Guide To Using VMS"	7	31
EK-A0377-UG	Documentation, "Guide To Using VMS"	8	34

**INDEX BY DIGITAL PART NUMBER**  
**MicroVAX 3100 MODELS 30/40/80/85/90/95**

<b>PART NO.</b>	<b>DESCRIPTION</b>	<b>FIG NO.</b>	<b>ITEM NO.</b>
EK-A0377-UG	Documentation, "Guide To Using VMS"	9	34
EK-A0377-UG	Documentation, "Guide to Using VMS"	1	29
EK-A0510-MG	Documentation, BA42-A Enclosure Maintenance	1	N/A
EK-A0510-MG	Documentation, BA42-A Enclosure Maintenance	10	N/A
EK-A0510-MG	Documentation, BA42-A Enclosure Maintenance	7	N/A
EK-A0510-MG	Documentation, BA42-A Enclosure Maintenance	4	N/A
EK-A0511-MG	Documentation, BA42-B Enclosure Maintenance	1	N/A
EK-A0511-MG	Documentation, BA42-B Enclosure Maintenance	10	N/A
EK-A0511-MG	Documentation, BA42-B Enclosure Maintenance	7	N/A
EK-A0511-MG	Documentation, BA42-B Enclosure Maintenance	8	N/A
EK-A0511-MG	Documentation, BA42-B Enclosure Maintenance	9	N/A
EK-A0511-MG	Documentation, BA42-B Enclosure Maintenance	4	N/A
EK-A0519-MG	Documentation, Options Manual	1	N/A
EK-A0519-MG	Documentation, Options Manual	10	N/A
EK-A0519-MG	Documentation, Options Manual	7	N/A
EK-A0519-MG	Documentation, Options Manual	8	N/A
EK-A0519-MG	Documentation, Options Manual	9	N/A
EK-A0519-MG	Documentation, Options Manual	4	N/A
H7083-AA	Power Supply, 122W Auto Select (100V/120V-220V/240V)	1	2
H8575-A	Adapter, 25 Pin D-Sub to MMJ	1	3
H8575-A	Adapter, 25 Pin D-Sub to MMJ	10	2
H8575-A	Adapter, 25 Pin D-Sub to MMJ	4	2
H8575-A	Adapter, 25 Pin D-Sub to MMJ	7	2
H8575-A	Adapter, 25 Pin D-Sub to MMJ	8	2
H8575-A	Adapter, 25 Pin D-Sub to MMJ	9	2
MS44-CA	Module, (4) ECMB Parity Memory Option	8	28A
MS44-CA	Module, (4) ECMB Parity Memory Option	9	28A
MS44-DC	Module, 64MB Memory for VAXstation 4000-90	10	3
MS44L-AA	Module, (4) ECMB Parity Memory Option	8	27A
MS44L-AA	Module, (4) ECMB Parity Memory Option	9	27A
MS44L-AA	Module, ECMB Parity Memory Option	7	26A
MS44L-DC	Module, 16MB Memory for VAXstation 4000-90	10	4

# INDEX BY DIGITAL PART DESCRIPTION

MicroVAX 3100 MODELS 30/40/80/85/90/95

DESCRIPTION	PART NO.	FIG. NO.	ITEM NO.
Adapter, 25 Pin D–Sub to MMJ	H8575–A	1	3
Adapter, 25 Pin D–Sub to MMJ	H8575–A	10	2
Adapter, 25 Pin D–Sub to MMJ	H8575–A	4	2
Adapter, 25 Pin D–Sub to MMJ	H8575–A	7	2
Adapter, 25 Pin D–Sub to MMJ	H8575–A	8	2
Adapter, 25 Pin D–Sub to MMJ	H8575–A	9	2
BASE ASSEMBLY	70–27106–01	4	21
BASE ASSEMBLY	70–27106–01	5	N/A
BASE ASSEMBLY	70–28535–01	1	20
BASE ASSEMBLY	70–28535–01	2	N/A
BASE ASSEMBLY,	70–27106–01	7	20
BASE ASSEMBLY	70–27106–01	8	21
BASE ASSEMBLY	70–27106–01	9	21
BASE ASSEMBLY, M40	70–27106–01	10	25
Bag, Poly Reclose	99–06557–30	10	36
Base Detail, Model 30	74–42108–01	2	4
Base Detail, Model 40/80	74–41871–01	5	4
Battery, 3 Cell 3.75V .18 ma Nicad	12–19245–01	1	17A
Battery, 3 Cell 3.75V .18 ma Nicad	12–19245–01	4	18A
Battery, 3 Cell 3.75V .18 ma Nicad	12–19245–01	8	27C
Battery, 3 Cell 3.75V .18 ma Nicad	12–19245–01	8	28C
Battery, 3 Cell 3.75V .18 ma Nicad	12–19245–01	9	27C
Battery, 3 Cell 3.75V .18 ma Nicad	12–19245–01	9	28C
Battery, 3 Cell 3.75V .18ma Nicad	12–19245–01	7	26C
Bezel Assembly, Front	70–25797–01	3	2
Bezel Assembly, Front	70–26168–01	6	2
Bezel Assembly, Rear	70–27107–01	10	26
Bezel Assembly, Rear	70–27107–01	4	22
Bezel Assembly, Rear	70–27107–01	7	21
Bezel Assembly, Rear	70–27107–01	8	22
Bezel Assembly, Rear	70–27107–01	9	22
Bezel Assembly, Rear	70–28536–01	1	21
Cable Assembly, Flat 50 Way SCSI	17–03588–01	8	7
Cable Assembly, Flat 50 Way SCSI	17–03588–01	9	7
Cable Assembly, 5 Cond. Flat	17–03588–01	7	33
Cable Assembly, 50 Conductor Flat	17–03588–01	10	10
Cable Assembly, DC Harness	17–03017–01	1	8
Cable Assembly, DC Harness	17–03018–01	4	8
Cable Assembly, DC Harness	17–03018–01	7	7
Cable Assembly, DC Harness	17–03018–01	8	6
Cable Assembly, DC Harness	17–03018–01	9	6
Cable Assembly, DC Harness MHO/80 WAV	17–03018–01	10	9
Cable Assembly, Flat 50 Way SCSI	17–02944–01	10	8
Cable Assembly, Flat 50 Way SCSI	17–02944–01	4	6
Cable Assembly, Flat 50 Way SCSI	17–02944–01	7	6
Cable Assembly, Flat 50 Way SCSI	17–02944–01	8	5
Cable Assembly, Flat 50 Way SCSI	17–02944–01	9	5
Cable Assembly, Flat 50 Way SCSI	17–02944–01	1	6
Cable Assembly, Harness 3.3V	17–03136–01	7	8
Cable Assembly, Round SCSI 50 Way	17–03016–01	1	7
Cable, 25 ft. Data (17–00811–03)	BC16E–25	1	1
Cable, Flat 50 Cond. Strain Relief	17–03588–01	4	33
Cable, Oval 25 ft. Data (17–00811–03)	BC16E–25	4	1
Cable, Oval 25 ft. Data (17–00811–03)	BC16E–25	10	1

# INDEX BY DIGITAL PART DESCRIPTION

MicroVAX 3100 MODELS 30/40/80/85/90/95

DESCRIPTION	PART NO.	FIG. NO.	ITEM NO.
Cable, Oval 25 ft. Data (17-00811-03)	BC16E-25	7	1
Cable, Oval 25 ft. Data 6 Conductor (17-00811-03)	BC16E-25	9	1
Cable, Oval 25 ft. Data 6 Conductor (17-00811-03)	BC16E-25	8	1
Cantilever, CPU Retention	74-42448-01	2	6
Cantilever, CPU Retention	74-42448-01	5	6
Clamp, Cable SCSI Loop	90-11237-01	8	33
Clamp, Cable SCSI Loop	90-11237-01	9	33
Clamp, Cable SCSI Loop - Lower Shelf	90-11237-01	1	28
Clamp, Strain Relief Cable	90-11237-02	10	35
Clamp, Strain Relief Cable	90-11237-02	4	34
Clamp, Strain Relief Cable	90-11237-02	7	34
Connector, 50 Ohms BNC Coax	12-26318-01	1	19A
Connector, 50 Ohms BNC Coax	12-26318-01	10	24A
Connector, 50 Ohms BNC Coax	12-26318-01	4	20A
Connector, 50 Ohms BNC Coax	12-26318-01	7	19A
Connector, 50 Ohms BNC Coax	12-26318-01	8	20A
Connector, 50 Ohms BNC Coax	12-26318-01	9	20A
Connector, D-Sub 15 Position	12-22196-01	1	19C
Connector, D-Sub 15 Position	12-22196-01	10	24C
Connector, D-Sub 15 Position	12-22196-01	4	20C
Connector, D-Sub 15 Position	12-22196-01	7	19C
Connector, D-Sub 15 Position	12-22196-01	8	20C
Connector, D-Sub 15 Position	12-22196-01	9	20C
Connector, SCSI Term 50 Position Champ HSG	12-30552-01	1	4
Connector, SCSI Term 50 Position Champ HSG	12-30552-01	10	5
Connector, SCSI Term 50 Position Champ HSG	12-30552-01	4	3
Connector, SCSI Term 50 Position Champ HSG	12-30552-01	7	3
Connector, SCSI Term 50 Position Champ HSG	12-30552-01	8	3
Connector, SCSI Term 50 Position Champ HSG	12-30552-01	9	3
Cord, Power Term SVT 125 V	17-00606-02	10	6
COVER ASSEMBLY	70-26167-01	10	23
COVER ASSEMBLY	70-26167-01	4	19
COVER ASSEMBLY	70-26167-01	6	N/A
COVER ASSEMBLY	70-26167-01	7	18
COVER ASSEMBLY	70-26167-01	8	19
COVER ASSEMBLY	70-26167-01	9	19
Cover (Weldment)	70-26169-01	6	1
Cover, FCC Blanking	70-28539-02	1	23
Cover, FCC Blanking Comms	70-28539-02	10	30
Cover, FCC Blanking Comms	70-28539-02	4	26
Cover, FCC Blanking Comms	70-28539-02	7	25
Cover, FCC Blanking Comms	70-28539-02	8	26
Cover, FCC Blanking Comms	70-28539-02	9	26
Cover, FCC Blanking Option	70-28539-01	10	29
Cover, FCC Blanking Option	70-28539-01	4	25
Cover, FCC Blanking Option	70-28539-01	7	24
Cover, FCC Blanking Option	70-28539-01	8	25
Cover, FCC Blanking Option	70-28539-01	9	25
Documentation, BA42-A Enclosure Maintenance	EK-A0510-MG	1	N/A
Documentation, BA42-A Enclosure Maintenance	EK-A0510-MG	10	N/A
Documentation, BA42-A Enclosure Maintenance	EK-A0510-MG	7	N/A
Documentation, BA42-B Enclosure Maintenance	EK-A0511-MG	1	N/A
Documentation, BA42-B Enclosure Maintenance	EK-A0511-MG	10	N/A
Documentation, BA42-B Enclosure Maintenance	EK-A0511-MG	7	N/A

# INDEX BY DIGITAL PART DESCRIPTION

MicroVAX 3100 MODELS 30/40/80/85/90/95

DESCRIPTION	PART NO.	FIG. NO.	ITEM NO.
Documentation, BA42-B Enclosure Maintenance	EK-A0511-MG	8	N/A
Documentation, BA42-B Enclosure Maintenance	EK-A0511-MG	9	N/A
Documentation, Options Manual	EK-A0519-MG	1	N/A
Documentation, Options Manual	EK-A0519-MG	10	N/A
Documentation, Options Manual	EK-A0519-MG	7	N/A
Documentation, Options Manual	EK-A0519-MG	8	N/A
Documentation, Options Manual	EK-A0519-MG	9	N/A
Documentation, BA42-A Enclosure Maintenance	EK-A0510-MG	4	N/A
Documentation, BA42-B Enclosure Maintenance	EK-A0511-MG	4	N/A
Documentation, Guide To Using VMS	EK-A0377-UG	4	32
Documentation, Guide To Using VMS	EK-A0377-UG	7	31
Documentation, Guide To Using VMS	EK-A0377-UG	8	34
Documentation, Guide To Using VMS	EK-A0377-UG	9	34
Documentation, Options Manual	EK-A0519-MG	4	N/A
Documentation, Guide to Using VMS	EK-A0377-UG	1	29
Drive Assemblies	N/A	1	30
Drive Assemblies	N/A	10	37
Drive Assemblies	N/A	4	35
Drive Assemblies	N/A	7	35
Drive Assemblies	N/A	8	35
Drive Assemblies	N/A	9	35
ENCLOSURE ASSEMBLY, TOP	70-25726-01	1	18
ENCLOSURE ASSEMBLY, TOP	70-25726-01	3	N/A
Enclosure, Top (Weldment)	70-25786-01	3	1
Ferrite, Bead 50 Conductor Cable	16-34255-02	1	5
Ferrite, Bead 50 Conductor Cable (added)	16-34255-02	4	4
Finger, Non-Snag Grounding	12-26922-01	5	1
Finger, Non-Snag Grounding (For EOS)	12-26922-01	2	1
Foot, Self Adhesive	12-35649-01	2	2
Foot, Self Adhesive	12-35649-01	5	2
Gasket, CPU Grounding	74-42429-01	2	5
Gasket, CPU Grounding	74-42429-01	5	5
Harness Assembly, Wire	17-02219-01	10	7
Harness Assembly, Wire	17-02219-01	4	5
Harness Assembly, Wire	17-02219-01	7	4
Harness Assembly, Wire	17-02219-01	8	4
Harness Assembly, Wire	17-02219-01	9	4
Insert, Bezel	74-38027-01	10	32
Insert, Bezel	74-38027-01	4	28
Insert, Bezel	74-38027-01	7	28
Insert, Bezel	74-38027-01	8	30
Insert, Bezel	74-38027-01	9	30
Insert, Blank Bezel FCC Shield	74-37499-02	1	24
Insulation, CPU Sheet	12-39980-01	5	3
KIT, Thick/ThinWire ETHERNET	70-26209-01	1	19
KIT, Thick/ThinWire ETHERNET	70-26209-01	10	24
KIT, Thick/ThinWire ETHERNET	70-26209-01	4	20
KIT, Thick/ThinWire ETHERNET	70-26209-01	7	19
KIT, Thick/ThinWire ETHERNET	70-26209-01	8	20
KIT, Thick/ThinWire ETHERNET	70-26209-01	9	20

# INDEX BY DIGITAL PART DESCRIPTION

MicroVAX 3100 MODELS 30/40/80/85/90/95

DESCRIPTION	PART NO.	FIG. NO.	ITEM NO.
Label, "OPA"	36-39380-01	8	17
Label, "OPA"	36-39380-01	9	17
Label, "Attention, Preinstalled Software"	36-28979-01	1	10
Label, "Attention, Preinstalled Software"	36-28979-01	10	12
Label, "Attention, Preinstalled Software"	36-28979-01	4	11
Label, "Attention, Preinstalled Software"	36-28979-01	7	12
Label, "Attention, Preinstalled Software"	36-28979-01	8	10
Label, "Attention, Preinstalled Software"	36-28979-01	9	10
Label, "Bar Code"	36-28231-07	1	9
Label, "Bar Code"	36-28231-07	4	10
Label, "Bar Code"	36-28231-07	7	11
Label, "Bar Code"	36-28231-07	8	9
Label, "Bar Code"	36-28231-07	9	9
Label, "CE Mark"	36-36842-01	10	19
Label, "CE"	36-36842-01	8	16
Label, "CE"	36-36842-01	9	16
Label, "Diagnostic VS42A"	36-30489-01	1	13
Label, "Diagnostic VS42A"	36-30489-01	10	16
Label, "Diagnostic VS42A"	36-30489-01	4	14
Label, "Diagnostic VS42A"	36-30489-01	7	15
Label, "Diagnostic VS42A"	36-30489-01	8	13
Label, "Diagnostic VS42A"	36-30489-01	9	13
Label, "FTZ Postcard"	36-30422-05	1	12
Label, "FTZ Postcard"	36-30422-10	4	13
Label, "FTZ Postcard"	36-30422-10	7	14
Label, "FTZ Postcard"	36-30422-10	8	12
Label, "FTZ Postcard"	36-30422-10	9	12
Label, "FTZ Postcard, Series BA42B"	36-30422-10	10	15
Label, "OPA0 Console Port Arrow"	36-39380-01	10	20
Label, "PTT Regulatory"	36-36015-01	1	14
Label, "PTT"	36-36015-02	4	15
Label, "PTT"	36-36015-02	7	10
Label, "PTT"	36-36015-02	8	14
Label, "PTT"	36-36015-02	9	14
Label, "Product ID" BA42-B"	36-36394-02	9	15
Label, "Product ID"	36-36394-01	1	15
Label, "Product ID"	36-36394-02	10	18
Label, "Product ID"	36-36394-02	4	16
Label, "Product ID"	36-36394-02	7	16
Label, "Product ID" BA42-B"	36-36394-02	8	15
Label, "Regulatory Canada"	36-30382-23	10	13
Label, "Regulatory Canada"	36-30382-23	4	12
Label, "Regulatory Canada"	36-30382-23	7	13
Label, "Regulatory Canada"	36-30382-23	8	11
Label, "Regulatory Canada"	36-30382-23	9	11
Label, "Regulatory UK"	36-30382-22	1	11
Label, "Regulatory UK"	36-30382-24	10	14
Label, "Regulatory UK"	36-30382-24	4	12
Label, "Regulatory UK"	36-30382-24	7	13
Label, "Regulatory UK"	36-30382-24	8	11
Label, "Regulatory UK"	36-30382-24	9	11
Label, "Regulatory USA/Canada"	36-30382-21	1	11
Label, "VAX 4000-1XXA, PTT Regulation"	36-36015-03	10	17

# INDEX BY DIGITAL PART DESCRIPTION

MicroVAX 3100 MODELS 30/40/80/85/90/95

DESCRIPTION	PART NO.	FIG. NO.	ITEM NO.
Medallion, MicroVAX 3100 Model 30	74-37642-20	1	25
Medallion, MicroVAX 3100 Model 40	74-37642-21	4	27
Medallion, MicroVAX 3100 Model 80	74-37642-22	7	27
Medallion, MicroVAX 3100 Model 85	74-37642-33	10	31
Medallion, MicroVAX 3100 Model 90	74-37642-27	8	29
Medallion, MicroVAX 3100 Model 90	74-37642-27	9	29
MicroVAX 3100 MODEL 85 SSB, KA55 CPU KERNEL, BA42B ENCLOSURE	46ZBM-A9	10	N/A
MicroVAX 3100 MODEL 85 SSB, KA55 CPU KERNEL, BA42B ENCLOSURE	46ZBM-B9	10	N/A
MicroVAX 3100 MODEL 95, SSB KA51 NVAX CPU KERNEL, BA42B ENCLOSURE	48ZBM-C9	9	N/A
MicroVAX 3100 MODEL 95, SSB, KA51 NVAX CPU KERNEL, BA42B ENCLOSURE	48ZBM-D9	9	N/A
MicroVAX 3100 MODEL40, SBB KA45 CPU KERNEL, BA42 ENCLOSURE	450ZM-B9	4	N/A
MicroVAX 3100 MODEL 80, SSB, KA47 MAR CPU KERNEL, BA42 ENCLOSURE	470ZM-B9	7	N/A
MicroVAX 3100 MODEL 90 SSB, KA50 NVAX CPU KERNEL, BA42 ENCLOSURE,16 MB MEM.	47ZBM-A9	8	N/A
MicroVAX 3100 Model 90 SSB, KA50 NVAX CPU KERNEL, BA42 ENCLOSURE, 64 MB MEM.	47ZBM-B9	8	N/A
MicroVAX MODEL 30 SSB, KA45 CPU, BA42A ENCLOSURE	450ZN-B9	1	N/A
MODULE ASSEMBLY, CPU 16 MB MEMORY	70-29672-01	8	27
MODULE ASSEMBLY, CPU 16 MB MEMORY	70-29672-03	9	27
MODULE ASSEMBLY, CPU 64 MB MEMORY	70-29672-02	8	28
MODULE ASSEMBLY, CPU 64 MB MEMORY	70-29672-04	9	28
MODULE ASSEMBLY, CPU 8MB MEMORY	70-29670-01	7	26
MODULE ASSEMBLY, SOC CPU	54-20654-01	1	17
MODULE ASSEMBLY, SOC CPU	54-20654-01	4	18
Module, (4) ECMB Parity Memory Option	MS44-CA	8	28A
Module, (4) ECMB Parity Memory Option	MS44-CA	9	28A
Module, (4) ECMB Parity Memory Option	MS44L-AA	8	27A
Module, (4) ECMB Parity Memory Option	MS44L-AA	9	27A
Module, 16MB Memory for VAXstation 4000-90	MS44L-DC	10	4
Module, 64MB Memory for VAXstation 4000-90	MS44-DC	10	3
Module, CPU Assembly	54-20652-01	7	26B
Module, CPU Assembly	54-21797-01	8	27B
Module, CPU Assembly	54-21797-01	8	28B
Module, CPU Assembly	54-21797-01	9	27B
Module, CPU Assembly	54-21797-01	9	28B
Module, ECMB Parity Memory Option	MS44L-AA	7	26A
Module, NVAX CPU, 128K Cache, 16NS, SCSI	54-21797-04	10	22
Package Assembly	37-01106-01	4	17
Package Assembly	37-01106-01	7	17
Package Assembly	37-01106-01	8	18
Package Assembly	37-01106-01	9	18
Package Assembly	37-01106-08	10	21
Package Assembly	37-01107-01	1	16
Power Supply Assembly, 166 Watts 120V/240V	30-35042-01	4	9
Power Supply Assembly, 166 Watts 120V/240V	30-35042-01	7	9
Power Supply Assembly, 166 Watts 120V/240V	30-35042-01	8	8
Power Supply Assembly, 166 Watts 120V/240V	30-35042-01	9	8
Power Supply Assembly, 166 Watts 120V/240V	30-35042-01	10	11

# INDEX BY DIGITAL PART DESCRIPTION

MicroVAX 3100 MODELS 30/40/80/85/90/95

DESCRIPTION	PART NO.	FIG. NO.	ITEM NO.
Power Supply, 122W Auto Select (100V/120V–220V/240V)	H7083–AA	1	2
Rivet, Repetition Clinch .125	90–00052–01	5	7
Rivet, Repetition Clinch .125 DIA	90–00052–01	2	7
Screw, Self–Tap Flat Hd No. 4–20 x 3/16	90–10411–01	3	4
Screw, Self–Tap Flat Hd No. 4–20 x 3/16	90–10411–01	6	3
Screw, Sems Pan Hd No 4–40 x .375 XRCS	90–09643–00	10	33
Screw, Sems Pan Hd No 4–40 x 3/8	90–09643–00	4	29
Screw, Sems Pan Hd No 4–40 x 3/8	90–09643–00	7	29
Screw, Sems Pan Hd No 4–40 x 3/8	90–09643–00	8	31
Screw, Sems Pan Hd No 4–40 x 3/8	90–09643–00	9	31
Screw, Sems Pan Hd No. 4–40 x .375	90–09643–00	1	26
Screw, Sems Pan Hd No. 6–32 x .312	90–09984–07	1	27
Screw, Sems Pan Hd No. 6–32 x .312 XRCS	90–09984–07	10	34
Screw, Sems Pan Hd No. 6–32 x 5/16	90–09984–07	4	30
Screw, Sems Pan Hd No. 6–32 x 5/16	90–09984–07	7	30
Screw, Sems Pan Hd No. 6–32 x 5/16	90–09984–07	8	32
Screw, Sems Pan Hd No. 6–32 x 5/16	90–09984–07	9	32
Sheet, CPU Insulation	12–39980–01	2	3
Shelf, Lower Drive Assembly	70–27108–01	10	27
Shelf, Lower Drive Assembly	70–27108–01	4	23
Shelf, Lower Drive Assembly	70–27108–01	7	22
Shelf, Lower Drive Assembly	70–27108–01	8	23
Shelf, Lower Drive Assembly	70–27108–01	9	23
Shelf, Lower Drive Assembly	70–28537–01	1	22
Shelf, Upper Drive Assembly	70–27109–01	10	28
Shelf, Upper Drive Assembly	70–27109–01	4	24
Shelf, Upper Drive Assembly	70–27109–01	7	23
Shelf, Upper Drive Assembly	70–27109–01	8	24
Shelf, Upper Drive Assembly	70–27109–01	9	24
Tee, BNC Coax	12–25869–01	1	19B
Tee, BNC Coaxial	12–25869–01	10	24B
Tee, BNC Coaxial	12–25869–01	4	20B
Tee, BNC Coaxial	12–25869–01	7	19B
Tee, BNC Coaxial	12–25869–01	8	20B
Tee, BNC Coaxial	12–25869–01	9	20B