

**MODEL WP BA-11 EXPANSION CHASSIS
DOCUMENTATION PACKAGE**

W91001065



14321 MYFORD RD. TUSTIN, CA 92680 (714)730-6250

MODEL WP BA-11 EXPANSION CHASSIS

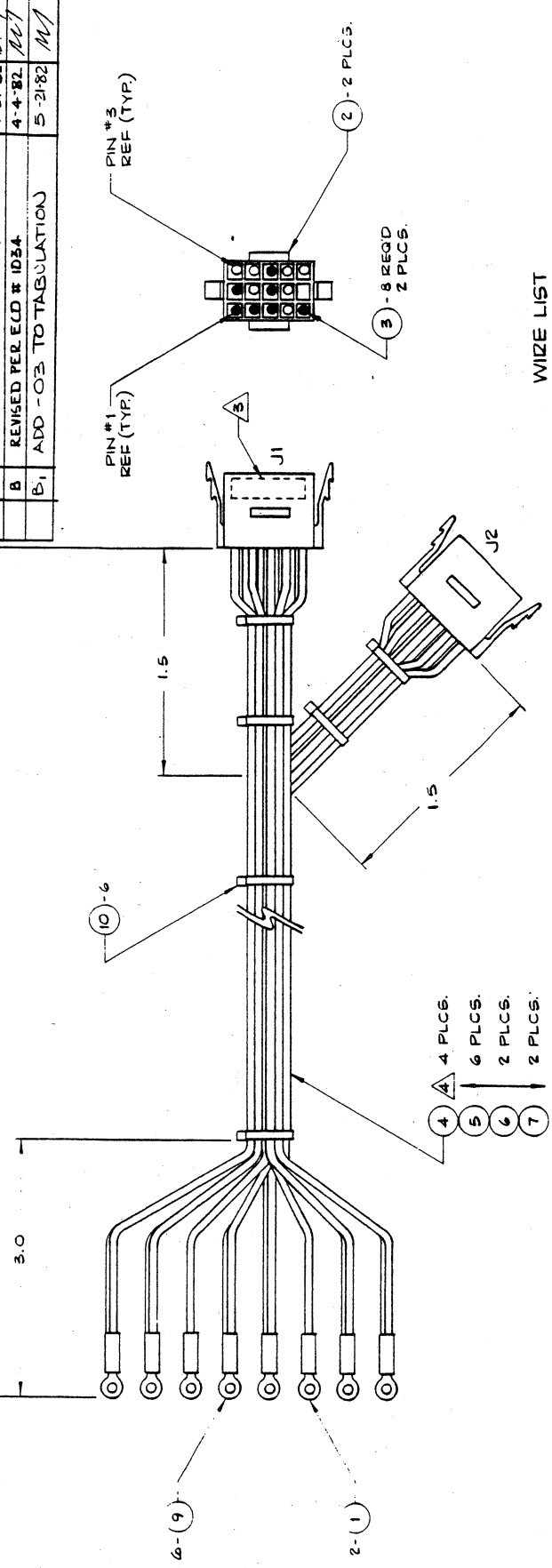
TABLE OF CONTENTS

<u>DESCRIPTION</u>	<u>DOCUMENT NUMBER</u>
INSTALLATION INSTRUCTION	W44005304 X1
ASSEMBLY - CABLE DD11 DK/CK POWER WP909/WPBA11	W44005213 B1
ASSEMBLY - CABLE BA11 POWER SUPPLY	W44005221 X
ASSEMBLY - CABLE BA11 TB1 TO FILTER	W44005239 X
ASSEMBLY - CABLE BA11 FANS	W44005262 X1
ASSEMBLY - CABLE BA11 FILTER	W44005270 X
ASSEMBLY - POWER SUPPLY MOUNTING PLATE BA11	W44005288 X
SUBASSEMBLY - BA11 FRONT COVER	W44005320 X1
TOP ASSEMBLY - BA11 EXPANSION CHASSIS	W44005346 X2
WIRE LIST - BACKPLANE DD11-CK EQUIVALENT	W44004612 A
NATIONAL POWER TECH P/S SCHEMATIC	W51000065 X

4 3 2 1

REVISIONS			
ZONE	LTR	DESCRIPTION	DATE
A		PRODUCTION RELEASE	1-21-82
B		REVISED PER ECD # 1034	4-4-82
B1		ADD -03 TO TABULATION	5-21-82

DIM. "A"



WIRE LIST

WIRE	COLOR	FROM	TO	VOLTAGE
1	RED	J1-1	J2-1	+5V
2	RED	J1-1	J2-1	+5V
3	BLK	J1-6	J2-12	GND ±15V RETURN
4	BLU	J1-13	J2-13	-12V OR -15V
5	BLU	J1-13	J2-13	-12V OR -15V
6	GRY	J1-2	J2-2	+12V OR +15V
7	GRY	J1-2	J2-2	+12V OR +15V
8	BLK	J1-9	J2-9	GND ±5V RETURN
9	BLK	J1-7	J2-7	GND ±5V RETURN
10	BLK	J1-9	J2-9	GND ±5V RETURN
11	BLK	J1-7	J2-7	GND ±5V RETURN
12	BLK	J1-6	J2-12	GND ±15V RETURN
13	RED	J1-4	J2-4	+5V
14	RED	J1-4	J2-4	+5V

TABULATION

DASH #	DIM. "A"
-01	6 IN. ± .5 IN.
-02	18 IN. ± .5 IN.
-03	24 IN. ± .5 IN.

- SEE TABULATION FOR WIRE LENGTH.
 - IDENTIFY WITH P/N & REV LTR WHERE SHOWN.
 - WIRES TO BE INSTALLED IN SAME LUG.
 - SEE SEPARATE PARTS LIST.
- NOTES: UNLESS OTHERWISE SPECIFIED.

QTY REQD	CODE IDENT	PART OR IDENTIFYING NO.	NOMENCLATURE OR DESCRIPTION
PARTS LIST			
CONTRACT NO.			
UNLESS OTHERWISE SPECIFIED DIMENSIONS ARE IN INCHES TOLERANCES ARE:			
FRACTIONS		DECIMALS	ANGLES
± /		± .25 ±	± /
MATERIAL			
FINISH			
DO NOT SCALE DRAWING			
APPLICATION			
NEXT ASSY			
USED ON			
WP B11			
WP 909			
DRAWN G. WOOD			
CHECKED			
DATE 1-21-82			
DATE 1-22-82			
APPROVALS			
ASSY - CABLE			
DD11-DK/CK			
POWER - WP909/WP B11			
WESPERLINE™			
Division of WESPERCORP. ANAHEIM, CALIFORNIA			
SIZE			
CODE IDENT NO			
DRAWING NO.			
W44005213			
SCALE			
SHEET 1 OF 1			

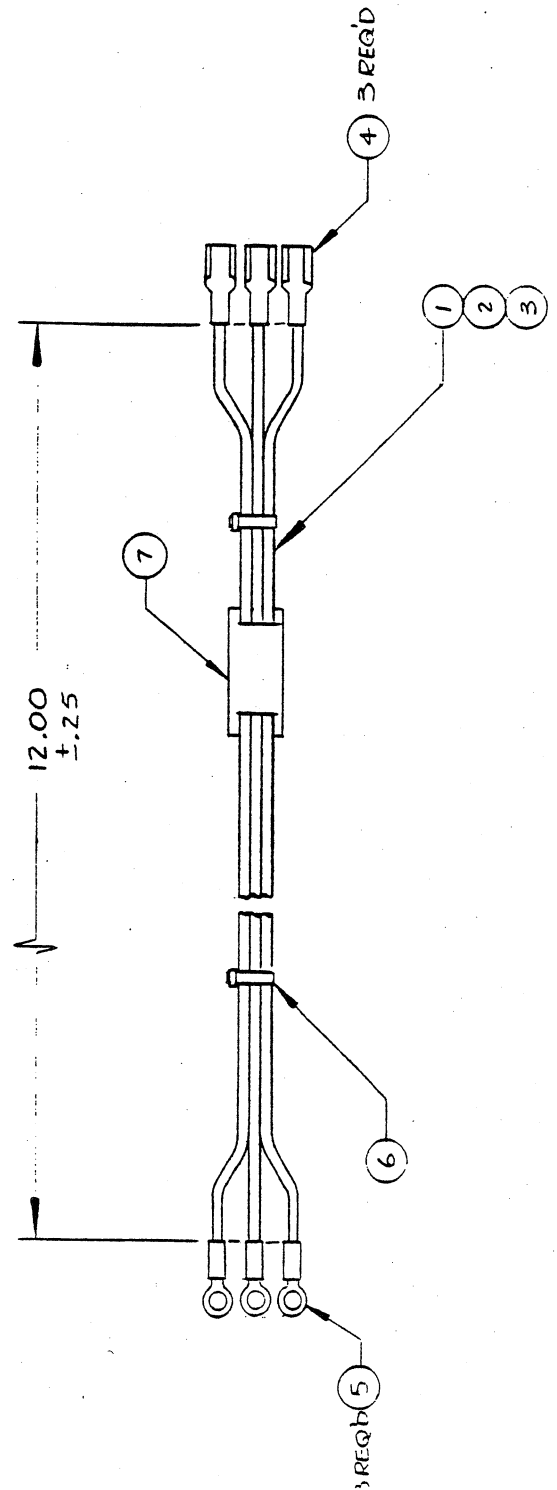
SEQ	PART NUMBER	DESCRIPTION	CON	QTY	HRS	SUB	REV	L	LOCATION	EFF DATE
000	LSC	NO INVENTORY ITEM		10	.0					01/25/82
001	W2600C315	LUG RG NO.6;16-14AWG HHS 4873		2	.0					01/25/82
002	P23004120	CONN 15 SKT AMP 1-480323-0		2	.0				J1,J2	01/25/82
003	P23003031	CONN SKT AMP 60619-1		16	.0					01/25/82
004	P28000214-02	WIRE 14AWG RED UL 1015		2	.0					01/25/82
005	P28000214-00	WIRE 14AWG BLK UL 1015		3	.0					01/25/82
006	P28000214-06	WIRE 14AWG BLUE UL 1015		1	.0					01/25/82
007	P28000214-08	WIRE 14AWG GRAY UL 1015		1	.0					01/25/82
008		NO INVENTORY ITEM		1	.0					01/25/82
009	W2600C414	LUG RG NO.6;12-10AWG HHS 5157		6	.0					03/29/82
010	P2300C045	TYRP TYB-23M TYRAP NATURAL		6	.0					01/25/82

SEQ	PART NUMBER	DESCRIPTION	CON	QTY	HRS	SUB	REV	L	LOCATION	EFF DATE
000	LSC	NO INVENTORY ITEM		10	.0					01/25/82
001	W2600C315	LUG RG NO.6;16-14AWG HHS 4873		2	.0					01/25/82
002	P23004120	CONN 15 SKT AMP 1-480323-0		2	.0				J1,J2	01/25/82
003	P23003031	CONN SKT AMP 60619-1		16	.0					01/25/82
004	P28000214-02	WIRE 14AWG RED UL 1015		6	.0					01/25/82
005	P28000214-00	WIRE 14AWG BLK UL 1015		9	.0					01/25/82
006	P28000214-06	WIRE 14AWG BLUE UL 1015		3	.0					01/25/82
007	P28000214-08	WIRE 14AWG GRAY UL 1015		3	.0					01/25/82
008		NO INVENTORY ITEM		3	.0					01/25/82
009	W2600C414	LUG RG NO.6;12-10AWG HHS 5157		6	.0					03/29/82
010	P23000045	TYRP TYB-23M TYRAP NATURAL		6	.0					01/25/82

SEQ	PART NUMBER	DESCRIPTION	CON	QTY	HRS	SUB	REV	L	LOCATION	EFF DATE
000	LSC	NO INVENTORY ITEM		10	.0					05/19/82
001	W26000315	LUG RG NO.6;16-14AWG HHS 4873		2	.0					05/19/82
002	P23004120	CONN 15 SKT AMP 1-480323-0		2	.0				J1,J2	05/19/82
003	P23003031	CONN SKT AMP 60619-1		16	.0					05/19/82
004	P28000214-02	WIRE 14AWG RED UL 1015		8	.0					05/19/82
005	P28000214-00	WIRE 14AWG BLK UL 1015		12	.0					05/19/82
006	P28000214-06	WIRE 14AWG BLUE UL 1015		4	.0					05/19/82
007	P28000214-08	WIRE 14AWG GRAY UL 1015		4	.0					05/19/82
008		NO INVENTORY ITEM		4	.0					05/19/82
009	W26000414	LUG RG NO.6;12-10AWG HHS 5157		6	.0					05/19/82
010	P23000045	TYRP TYB-23M TYRAP NATURAL		8	.0					05/19/82

APR 2 1982

REVISIONS		
LTR	DESCRIPTION	DATE
X	PILOT RELEASE	4-7-82
		APPROVED



PLEASE RELEASE
NOT FOR CONTROL

JUN 10 1982

PAGE 1
DESC: ASSY-CABLE WPBA11 PWR SUP
CON QTY HRS SUB REV L LOCATION

DESCRIPTION

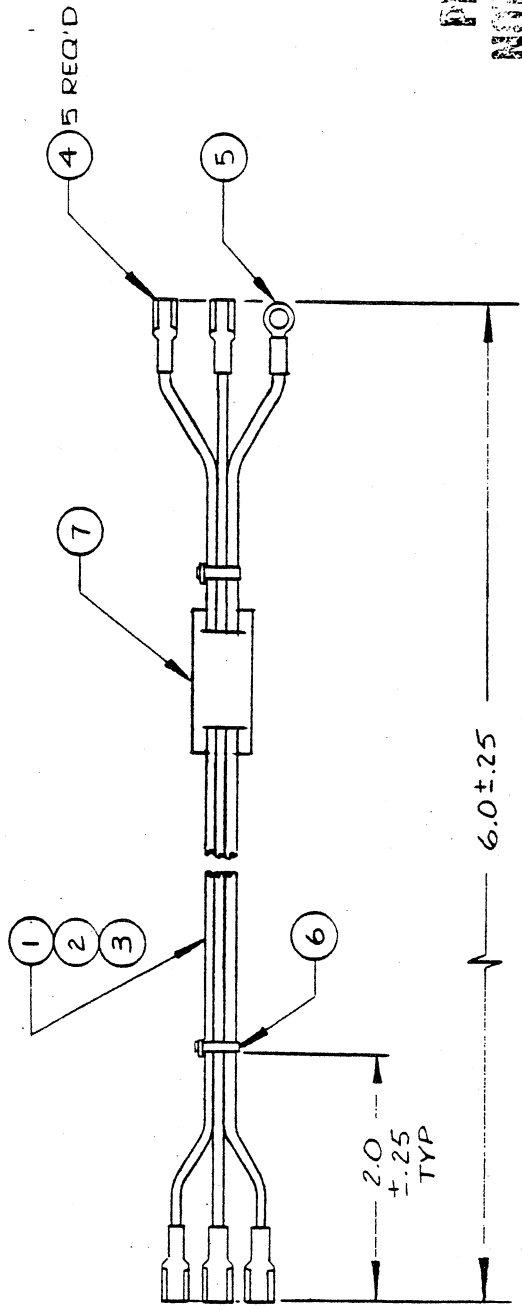
SEQ	PART NUMBER	DESCRIPTION	CON	QTY	HRS	SUB	REV	L	LOCATION
000	LSC	NO INVENTORY ITEM		7	.0				
001	P28000214-00	WIRE 14AWG BLK UL 1015		1	.0				
002	P28000206-09	WIRE 14AWG WHT MIL-W-768		1	.0				
003	P28000214-05	WIRE 14AWG GREEN UL 1015		1	.0				
004	W26000612	QDLG .250X.032 PAND DV14-250FI		3	.0				
005	W26000216	LUG RG NO.6722-18AWG HHS 4809		3	.0				
006	P23000045	TYRP TYB-23M TYRAP NATURAL	A/R		.0				
007	P74000001	ID MARKER CABLE IDENT HUGHES		1	.0				

		TOLERANCES UNLESS OTHERWISE SPECIFIED FRACTIONS DEC ANGLES ± ± ±	
APPROVALS DRAWN CHECKED		DATE 4-7-82	
SCALE NONE		SIZE B	
DRAWING NO. 44005221		DO NOT SCALE DRAWING	

44005288	BA11
NEXT ASSY USED ON	
APPLICATION	

05/20/82 BILL OF MATERIAL TOP LEVEL ASSEMBLY LIST
ASSEMBLY NO. W44005221

REVISIONS		
LTR	DESCRIPTION	DATE
X	PILOT RELEASE	4-7-82
		APPROVED



PRINTED ON RECYCLED
NOT UNDER FINAL CONTROL

JUN 10 1982

05/20/82 BILL OF MATERIAL TOP LEVEL ASSEMBLY LIST PAGE 1
ASSEMBLY NO. W44005239 REVISION X DESC: ASSY CABLE TB1 TO FILTER BA11

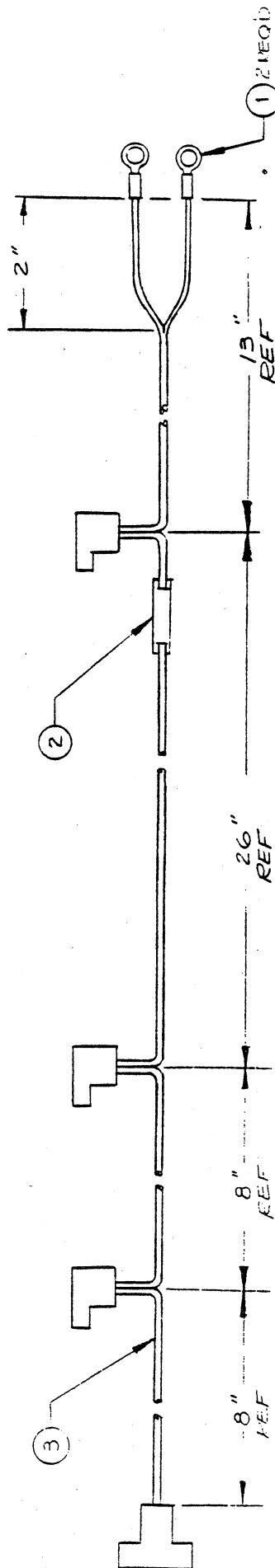
SEQ PART NUMBER DESCRIPTION CON QTY HRS SUB REV L LOCATION

000	LSC	NO INVENTORY ITEM	7	.0	
001	P28000214-00	WIRE 14AWG BLK UL 1015	1	.0	
002	P28000206-09	WIRE 14AWG WHT MIL-W-76B	1	.0	
003	P28000214-05	WIRE 14AWG GREEN UL 1015	1	.0	
004	W260000612	QDLG .250X-.032 PAND DV14-250FI	5	.0	
005	W260000216	LUG RG NO.6:22-18AWG HHS 4809	1	.0	
006	P230000045	TYRP TYB-23M TYRAP NATURAL	A/R	.0	
007	P740000001	ID MARKER CABLE IDENT HUGHES	1	.0	

TOLERANCES UNLESS OTHERWISE SPECIFIED		FRACTIONS DEC ANGLES	
±	±	±	±
APPROVALS	DATE		
DRAWN	5-4-82		
CHECKED			
44005288		BA11	
NEXT ASSY		USED ON	
APPLICATION			

WESPERLINE Division of WESPERCORP ANAHEIM, CALIFORNIA	
CABLE ASSY BA11 TB1 TO FILTER	
SCALE	SIZE
NONE	B
DRAWING NO. 44005239	
DO NOT SCALE DRAWING	
SHEET 1 of 1	

REVISIONS			
LTR	DESCRIPTION	DATE	APPROVED
X	PILOT RELEASE	4-7-82	<i>[Signature]</i>
XI	PILOT RELEASE	7-7-82	<i>[Signature]</i>



05/20/82 BILL OF MATERIAL TOP LEVEL ASSEMBLY LIST
 ASSEMBLY NO. W44005262

SEQ	PART NUMBER	DESCRIPTION	NO INVENTORY ITEM	CON	QTY	HRS	SUB	REV	L	LOCATION
000	LSC		LUG RG NO.6/22-18AWG HHS 4809		3	.0				
001	W26000216		ID MARKER CABLE IDENT HUGHES		2	.0				
002	P74000001		FAN CORD-COMPUTER CRAFT CC4082		1	.0				
003	W49000037				1	.0				

PRELIMINARY RELEASE
NOT UNDER REV. CONTROL

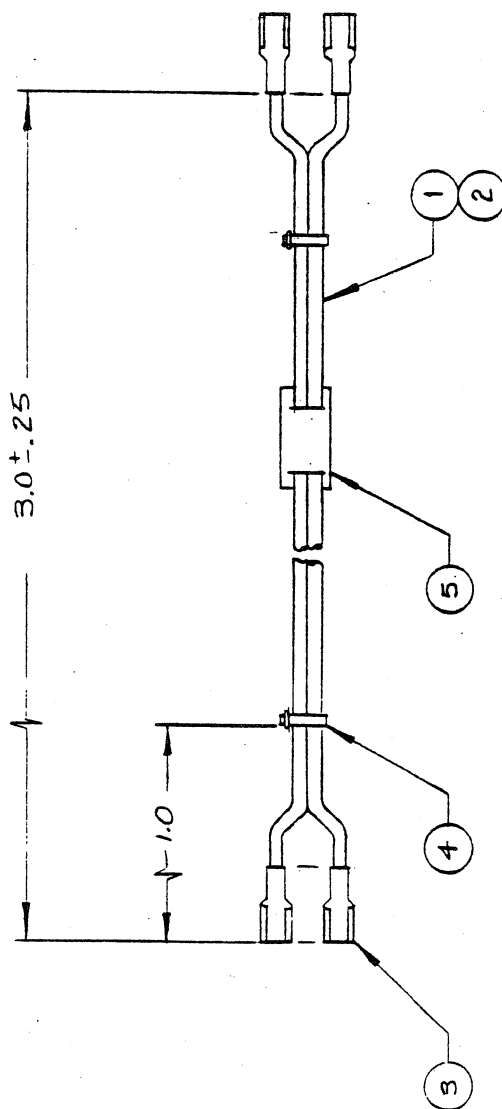
TOLERANCES UNLESS OTHERWISE SPECIFIED		FRACTIONS DEC ANGLES	
±	±	±	±
APPROVALS		DATE	
DRAWN <i>[Signature]</i>		3-3-82	
CHECKED <i>[Signature]</i>			
SCALE		SIZE	DRAWING NO.
1		B	44005262
DO NOT SCALE DRAWING			SHEET 141



ASSY, CABLE, BAIL
 FANS

JUL 08 1982

REVISIONS		
LTR	DESCRIPTION	DATE
X	PILOT RELEASE	4-6-82
		APPROVED




05/20/82		BILL OF MATERIAL TOP LEVEL ASSEMBLY LIST		PAGE 1	
ASSEMBLY NO. W44005270		REVISION X		DESC: ASSY CABLE FILTER BA11	
SEQ	PART NUMBER	DESCRIPTION	CON	QTY	HRS SUB REV L LOCATION
000	LSC	NO INVENTORY ITEM		5	.0
001	P28000206-09	WIRE 14AWG WHT MIL-W-768		1	.0
002	P28000214-00	WIRE 14AWG BLK UL 1015		1	.0
003	W260000612	QDLG .250X.032 PAND DV14-250FI		4	.0
004	P230000045	TYRP TYB-23M TYRAP NATURAL		2	.0
005	P740000001	ID MARKER CABLE IDENT HUGHES		1	.0

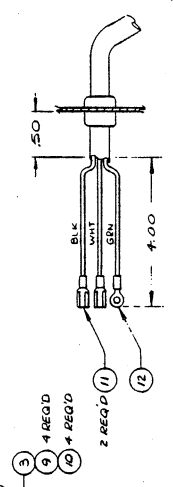
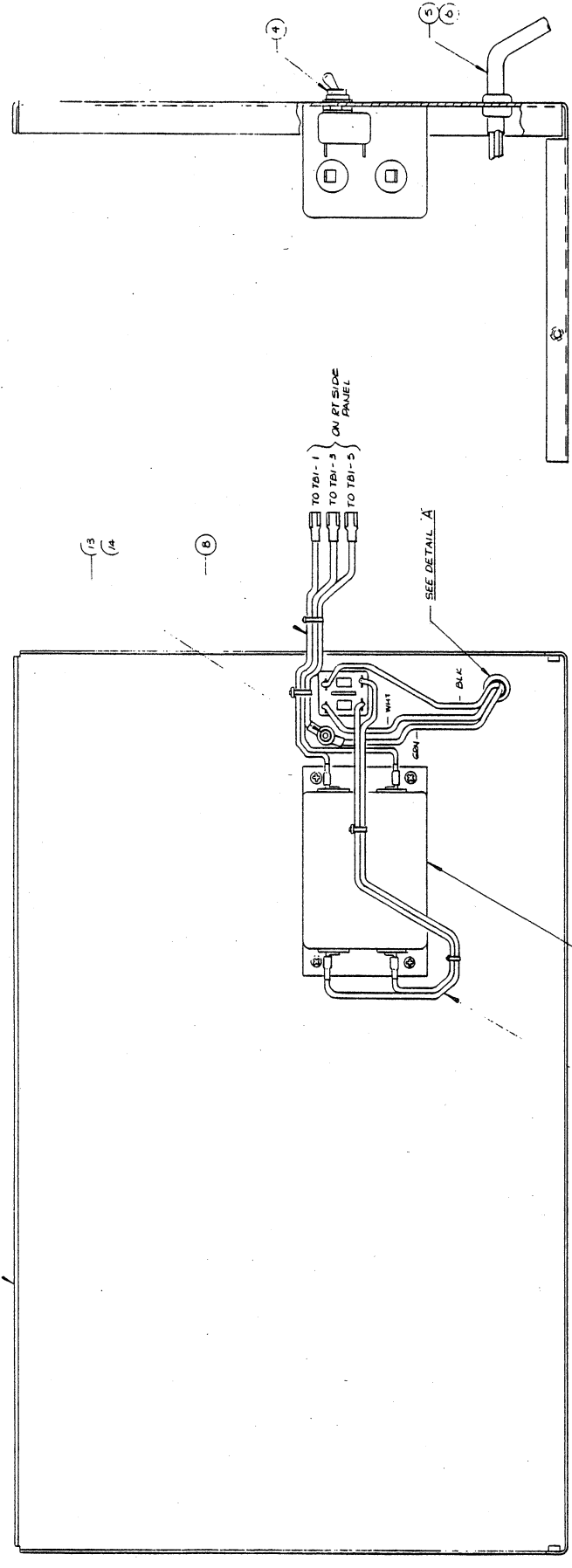
RECEIVED BY PURCHASE
JUN 10 1982

TOLERANCES UNLESS OTHERWISE SPECIFIED		FRACTIONS DEC ANGLES	
±	±	±	±
APPROVALS	DATE	WESPERLINE™ Division of WESPERCORP ANAHEIM, CALIFORNIA	
DRAWN J. Zier	4-6-82	CABLE ASSY, BA11 FILTER	
CHECKED [Signature]	6-9-82	SCALE	DRAWING NO.
			B 44005270
DO NOT SCALE DRAWING		SHEET 1 of 1	

44005288	BA11
NEXT ASSY	USED ON
APPLICATION	

8 7 6 5 4 3 2 1

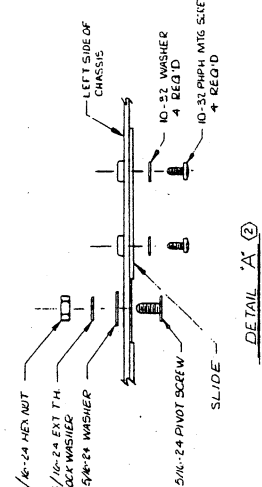
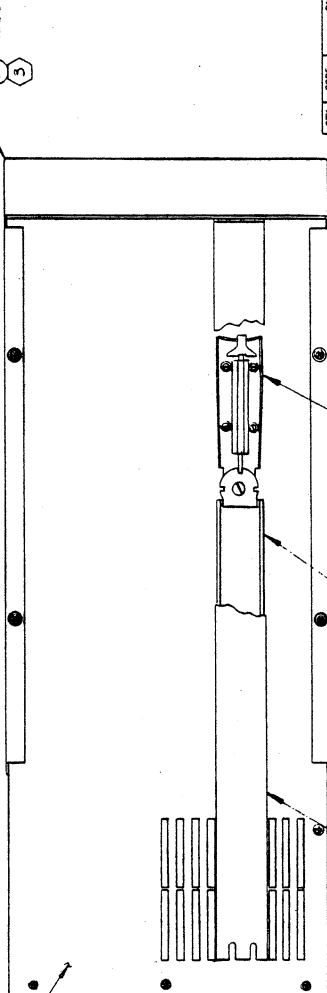
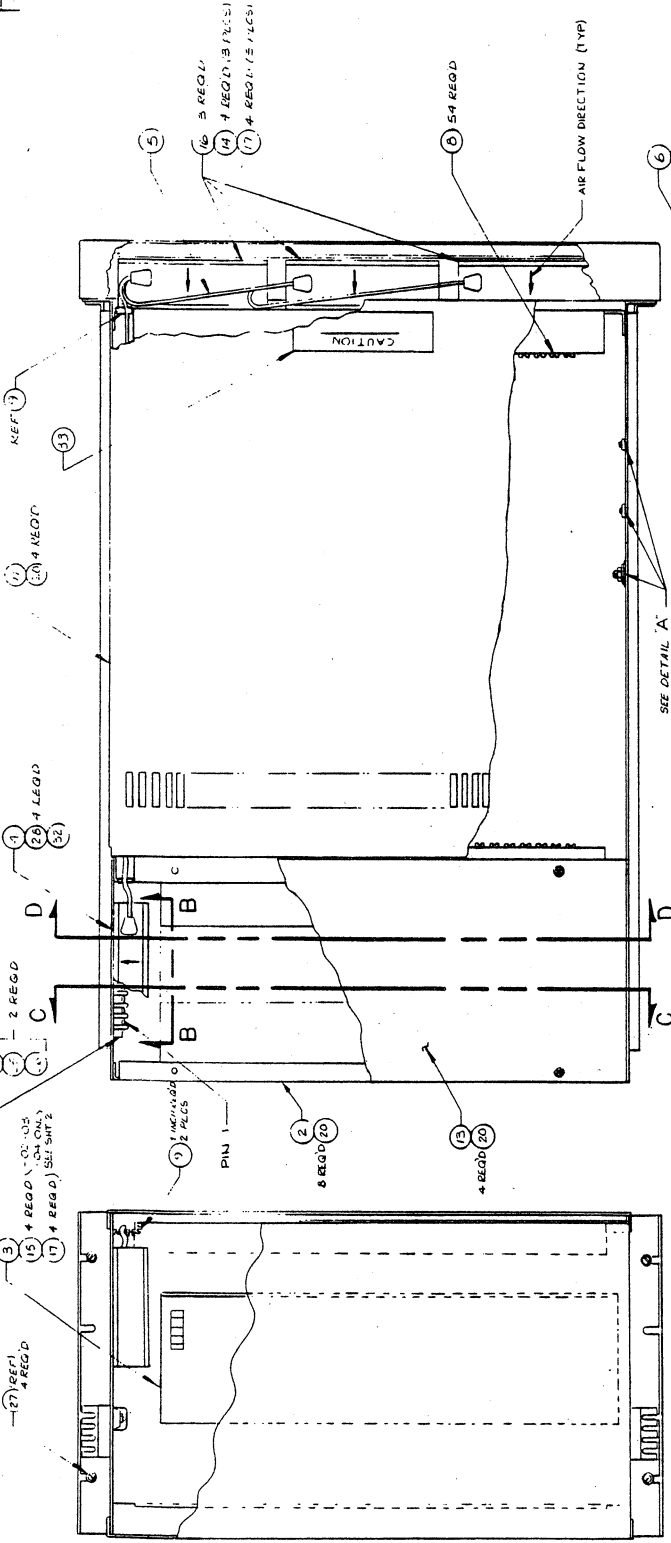
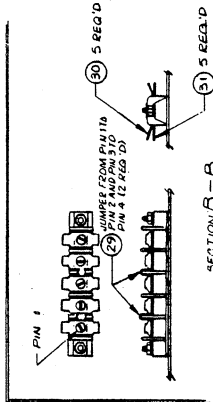
REVISIONS				
NO.	BY	DESCRIPTION	DATE	APPROVED
1	X	REVISED TO 1-1-77	5-11-77	
2	X	REVISED TO 1-1-77	5-11-77	

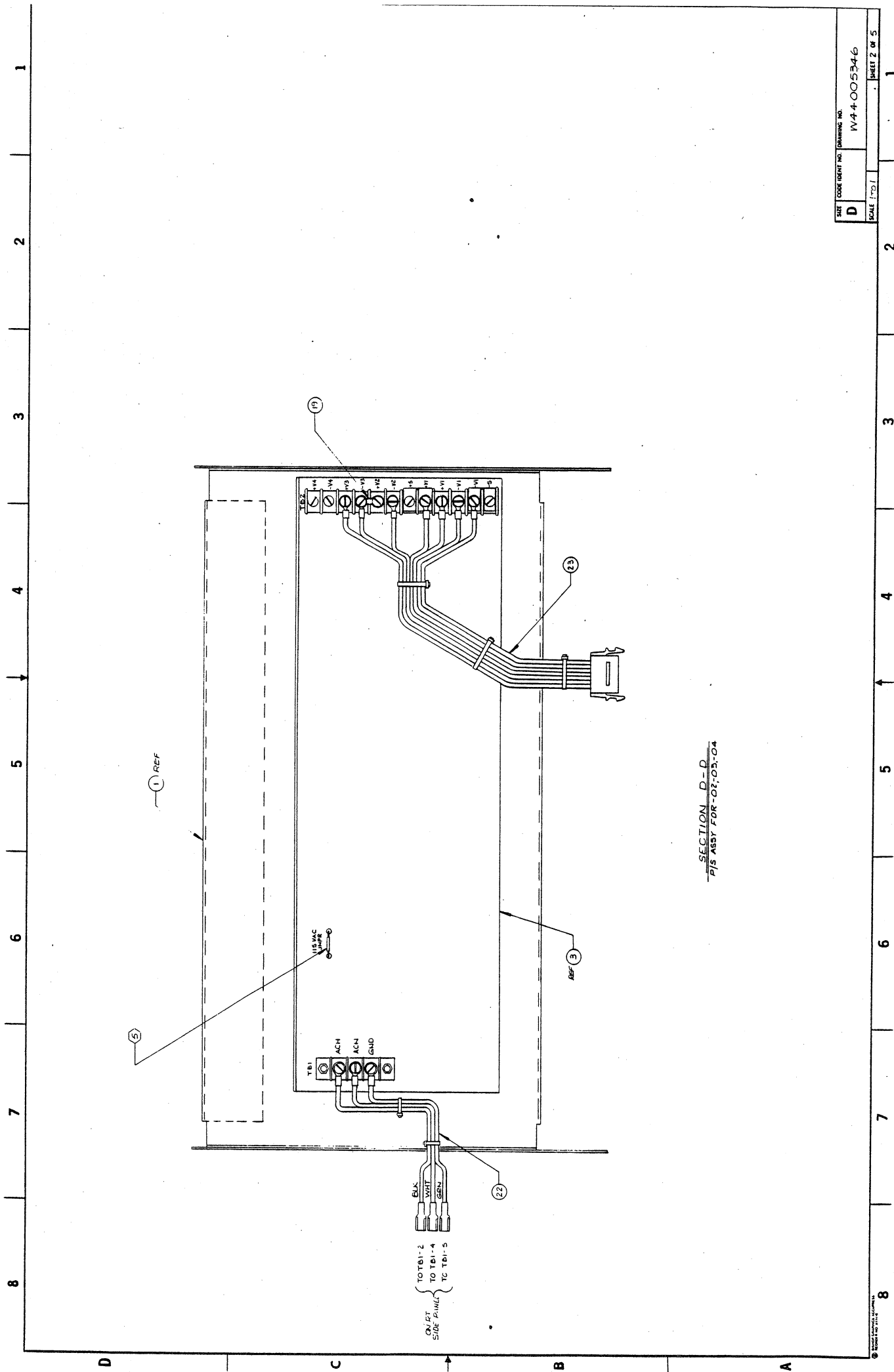


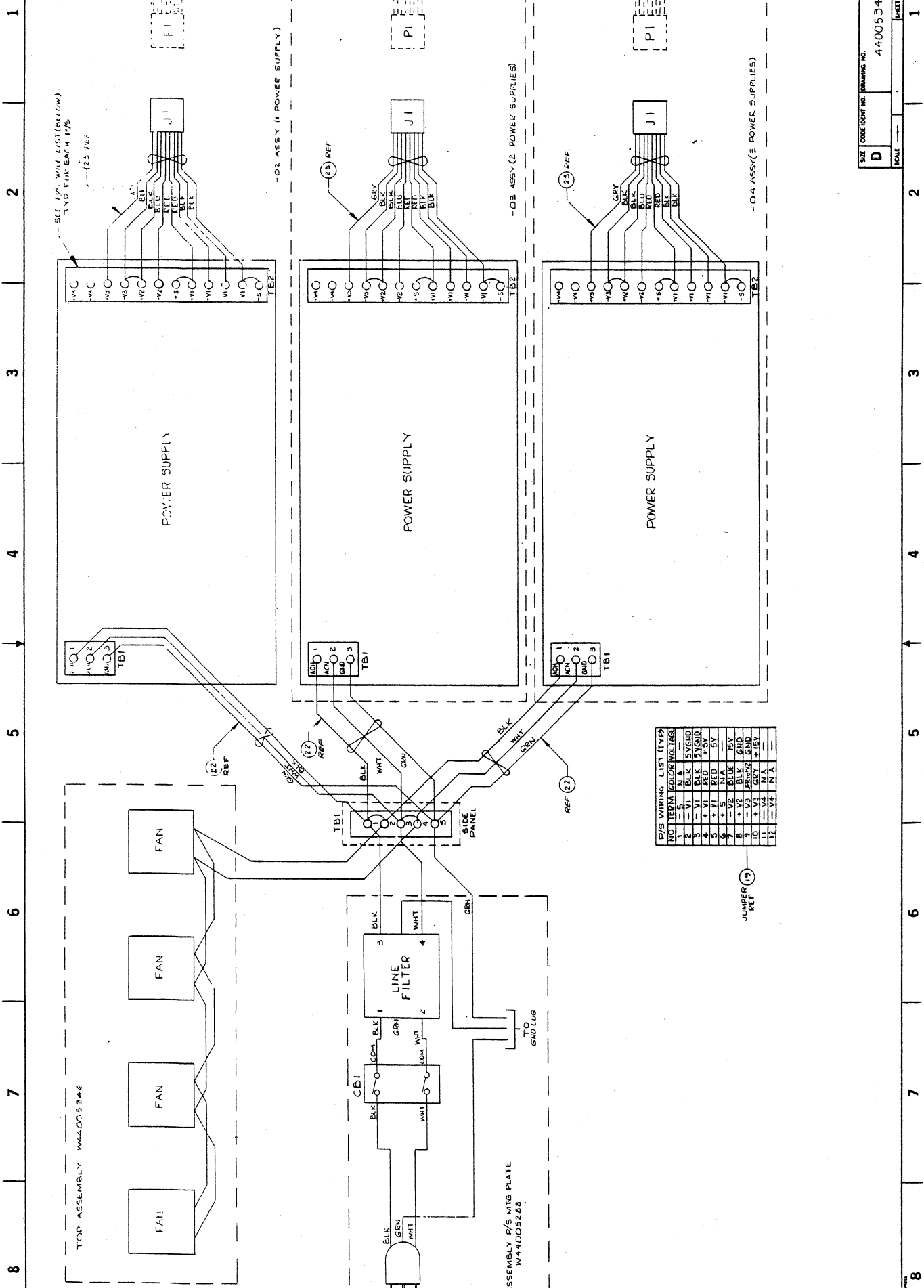
QTY	CODE	IDENT	IDENTIFYING NO	CONTRACT NO	UNLESS OTHERWISE SPECIFIED, DIMENSIONS ARE IN INCHES. FRACTIONS ARE DECIMALS. DIMENSIONS ARE TO CENTER UNLESS OTHERWISE SPECIFIED.	DATE	APPROVALS	DATE	APPROVALS
						2-10-77	[Signature]	2-10-77	[Signature]
PARTS LIST						WESPERLINE [®]			
						ASSEMBLY			
						PWB SUPPLY MFG.			
						PLATE BAIL			
						44005208			
						D			
						SCALE 1/1			
						SHEET 1 OF 1			

ZONE		REVISIONS		
	LTR	DESCRIPTION	DATE	APPROVED
X		PILOT RELEASE	5-23-82	[Signature]
X		ADDED CAUTION LABEL AND IN CONEN	5-23-82	[Signature]
X2		ADDED BLK #12 WIRE TO JICOM. SET	10-11-82	[Signature]

NOTES: UNLESS OTHERWISE SPECIFIED
1. FOR MATERIAL REQUIREMENTS AND
VARIATIONS TO ASSEMBLES, REF.
QAM 44-00028A-B, -C, -D, -E.
2. ALL DIMENSIONS ARE WITH TOLERANCES SURTIFIED
BY THE MANUFACTURER.
3. FOR FRONT COVER- 155V REF.
155V, DWT 44-100-0189.
4. WIRE PER WIRING DIAGRAM ON SHIT 5.
5. FOR 230VAC UNITS (1-05-106-023, -08)
CUT JUMPER, INDICATED PLACED TO
INSTALLATION ON ALL PWR SUPPLIES USED.

[illegible][illegible]





WIRING LIST (WBL)

NO.	WIRE	TO	FROM	WIRE
1	W1	W1	W1	W1
2	W2	W2	W2	W2
3	W3	W3	W3	W3
4	W4	W4	W4	W4
5	W5	W5	W5	W5
6	W6	W6	W6	W6
7	W7	W7	W7	W7
8	W8	W8	W8	W8
9	W9	W9	W9	W9
10	W10	W10	W10	W10
11	W11	W11	W11	W11
12	W12	W12	W12	W12

C6/29/82 BILL OF MATERIAL TOP LEVEL ASSEMBLY LIST PAGE 1
 ASSEMBLY NO. W44005346-01 REVISION X1 DESC: ASSY WPBA11 EXP CHASSIS NO P/S

SEQ	PART NUMBER	DESCRIPTION	CON	QTY	HRS	SUB	REV	L	LOCATION	EFF	DATE
000	LSC	NO INVENTORY ITEM		31	.0						05/19/82
001	W44005064-X	CHASSIS EXPANSION WPBA11		1	.0						05/19/82
002	W44005288-01	ASSY P/S MTG PLATE BA11-NO P/S		1	.0	S					05/19/82
003		NO INVENTORY ITEM			.0						05/19/82
004	W29000809	FAN ETRI 760-98-XH-182-115		1	.0						05/19/82
005	W44005262	ASSY CABLE PCB FANS BA11		1	.0	S					05/19/82
006	W44005320	SUP ASSY BA11 FRONT COVER		1	.0	S					05/19/82
007	W26001206	TERM STRIP SPOS KULKA 599-5-UH		1	.0						05/19/82
008	W49000029	PCSD 1650-F/SAE NYLN CRD GUIDE		54	.0						05/19/82
009	W29000060	GRMT CATERPILLER HHS 2692		1	.0						05/19/82
010	W49000334	SLIDE BA11 CHAS TRAK C230D124		1	.0						05/19/82
011	W44005072-01-X	COVER TCP WPBA11 EXP CHASSIS		1	.0						05/19/82
012	W44005072-02-X	COVER BOTTOM WPBA11 EXP CHAS		1	.0						05/19/82
013	W44005080-X	COVER PWR SUP WPBA11 EXP CHAS		1	.0						05/19/82
014	W47002209	SCR 8-32X3/8 SELF TAPPING		12	.0						05/19/82
015	W47000542	SCR 8-32X3/8 PHPH MS51957-43		4	.0						05/19/82
016	W29000858	FAN TORIN TA450 A30109-10 115V		3	.0						05/19/82
017	W48000731	WASHER 8 INT TOOTH MS35333-72		16	.0						05/19/82
018		NO INVENTORY ITEM			.0						05/19/82
019		NO INVENTORY ITEM			.0						05/19/82
020	W47001417	SCR 6-32X1/4 FHPP MS24693-C24		20	.0						05/19/82
021		NO INVENTORY ITEM			.0						05/19/82
022		NO INVENTORY ITEM			.0						05/19/82
023		NO INVENTORY ITEM			.0						05/19/82
024	W47001458	SCR 6-32X1/2 FHPP MS24693-C28		2	.0						05/19/82
025	W46000030	NUT 8-32 HEX MS 35649-284		2	.0						05/19/82
026	W48000723	WASHER 6 INT TH MS35333-71		2	.0						05/19/82
027		NO INVENTORY ITEM			.0						05/19/82
028	W47001623	SCREW SELF TAPFHPP-8-32X.38		4	.0						05/19/82
029	W26001214	JUMPER STRIP KULKA 600J		2	.0						05/19/82
030	W26001222	TABS KLIPITITE KULKA KT547		5	.0						05/19/82
031	W26001230	TAB KLIPITITE KULKA KT546		5	.0						05/19/82

PRELIMINARY RELEASE
 NOT QUALITY CONTROL

JUL 09 1982

SEQ	PART NUMBER	DESCRIPTION	CON	QTY	HRS	SUB	REV	L	LOCATION	EFF DATE
000	LSC	NO INVENTORY ITEM	31		.0					05/19/82
001	W44005064-X	CHASSIS EXPANSION WPBA11	1		.0					05/19/82
002	W44005288-01	ASSY P/S MTG PLATE BA11-NO P/S	1		.0	S				05/19/82
003	W51000065	P/S NAT-PWR TECH 25A NT200-133	2		.0					05/19/82
004	W29000209	FAN ETRI 760-98-XH-182-115	1		.0					05/19/82
005	W44005262	ASSY CABLE PCB FANS BA11	1		.0	S				05/19/82
006	W44005320	SUB ASSY BA11 FRONT COVER	1		.0	S				06/24/82
007	W26001206	TERM STRIP 5POS KULKA 599-5-UH	1		.0					05/19/82
008	W49000029	PCSD 1650-F/SAE NYLN CRD GUIDE	54		.0					05/19/82
009	W29000080	GRMT CATERPILLER HHS 2692	1		.0					05/19/82
010	W49000334	SLIDE BA11 CHAS TRAK C2300124	1		.0					05/19/82
011	W44005072-01-X	COVER TOP WPBA11 EXP CHASSIS	1		.0					05/19/82
012	W44005072-02-X	COVER BOTTOM WPBA11 EXP CHAS	1		.0					05/19/82
013	W44005080-X	COVER PWR SUP WPBA11 EXP CHAS	1		.0					05/19/82
014	W47002209	SCR 8-32X3/8 SELF TAPPING	12		.0					05/19/82
015	W47000542	SCR 9-32X3/8 PHPH MS51957-43	4		.0					05/19/82
016	W29000858	FAN TORIN T4450 A30108-10 115V	3		.0					05/19/82
017	W430000731	WASHER 8 INT TOOTH MS35333-72	16		.0					05/19/82
018		NO INVENTORY ITEM			.0					05/19/82
019	W26001031	TB JUMPER STRAP CINCH 141-J	2		.0					05/19/82
020	W47001417	SCR 6-32X1/4 FHPH MS24693-C24	20		.0					05/19/82
021		NO INVENTORY ITEM			.0					05/19/82
022	W44005221	ASSY-CABLE WPBA11 PWR SUP	2		.0	S				05/19/82
023	W44005213-03	ASSY-CABLE DD11-DK/CK PWR BA11	2		.0	S				05/19/82
024	W47001458	SCR 6-32X1/2 FHPH MS24693-C28	2		.0					05/19/82
025	W46000030	NUT 8-32 HEX MS 35649-284	2		.0					05/19/82
026	W48000723	WASHER 6 INT TH MS35333-71	2		.0					05/19/82
027	W47001615	SCR 8-32X5/16FHPH MS24693-C47	8		.0					05/19/82
028	W47001623	SCREW SELF TAPFHPH-8-32X.38	4		.0					05/19/82
029	W26001214	JUMPER STRIP KULKA 600J	2		.0					05/19/82
030	W26001222	TABS KLIPITITE KULKA KT547	5		.0					05/19/82
031	W26001230	TAB KLIPITITE KULKA KT546	5		.0					05/19/82

06/29/82		BILL OF MATERIAL TOP LEVEL ASSEMBLY LIST		PAGE 1		DESC: ASSY WPBA11 EXP CHASSIS 1 P/S				
ASSEMBLY NO. W44005346-02		REVISION X1		CON QTY		HRS SUB REV L LOCATION		EFF DATE		
SEQ	PART NUMBER	EXCEPT *	DESCRIPTION	CON	QTY	HRS	SUB	REV	L LOCATION	EFF DATE
000	LSC		NO INVENTORY ITEM		31	.0				05/19/82
001	W440C5064-X		CHASSIS EXPANSION WPBA11		1	.0				05/19/82
002	W44005288-01		ASSY P/S MTG PLATE BA11-NO P/S		1	.0	S			05/19/82
003	W510C0065		P/S NAT-PWR TECH 25A NT200-133		1	.0				05/19/82
004	W29000809		FAN ETRI 760-98-XH-182-115		1	.0				05/19/82
005	W440C5262		ASSY CABLE PCB FANS BA11		1	.0	S			05/19/82
006	W440C5320		SUB ASSY BA11 FRONT COVER		1	.0	S			05/19/82
007	W26001206		TERM STRIP 5POS KULKA 599-5-UH		1	.0				06/24/82
008	W490C0029		PCGD 1650-F/SAE NYLN CRD GUIDE		54	.0				05/19/82
009	W29000080		GRMT CATERPILLER HHS 2692		1	.0				05/19/82
010	W490C0334		SLIDE BA11 CHAS TRAK C230D124		1	.0				05/19/82
011	W440C5072-01-X		COVER TOP WPBA11 EXP CHASSIS		1	.0				05/19/82
012	W440C5072-02-X		COVER BOTTOM WPBA11 EXP CHAS		1	.0				05/19/82
013	W440C5080-X		COVER PWR SUP WPBA11 EXP CHAS		1	.0				05/19/82
014	W47002209		SCR 8-32X3/8 SELF TAPPING		12	.0				05/19/82
015	W47000542		SCR 8-32X3/8 PHPH MS51957-43		4	.0				05/19/82
016	W29000858		FAN TORIN TA450 A30108-10 115V		3	.0				05/19/82
017	W43000731		WASHER 8 INT TOOTH MS35333-72		16	.0				05/19/82
018			NO INVENTORY ITEM			.0				05/19/82
019	W26001081		T9 JUMPER STRAP CINCH 141-J		1	.0				05/19/82
020	W470C1417		SCR 6-32X1/4 FHPH MS24693-C24		20	.0				05/19/82
021			NO INVENTORY ITEM			.0				05/19/82
022	W440C5221		ASSY-CABLE WPBA11 PWR SUP		1	.0	S			05/19/82
023	W44005213-03		ASSY-CABLE DD11-DK/CK PWR BA11		1	.0	S			05/19/82
024	W47001458		SCR 6-32X1/2 FHPH MS24693-C28		2	.0				05/19/82
025	W46000030		NUT 8-32 HEX MS 35649-284		2	.0				05/19/82
026	W48000723		WASHER 6 INT TH MS35333-71		2	.0				05/19/82
027	W47001615		SCR 8-32X5/16FHPH MS24693-C47		4	.0				05/19/82
028	W47001623		SCREW SELF TAPFHPH-8-32X.38		4	.0				05/19/82
029	W26001214		JUMPER STRIP KULKA 600J		2	.0				05/19/82
030	W260C1222		TABS KLIPTITE KULKA KT547		5	.0				05/19/82
031	W260C1230		TAS KLIPTITE KULKA KT546		5	.0				05/19/82

SEQ	PART NUMBER	DESCRIPTION	CCN	QTY	HRS	SUB	REV	L	LOCATION	EFF	DATE
000	LSC	NO INVENTORY ITEM		31							C5/19/82
001	W44005064-X	CHASSIS EXPANSION WPBA11		1							C5/19/82
002	W44005288-01	ASSY P/S MTG PLATE BA11-NO P/S		1							C5/19/82
003	W51000065	P/S NAT-PWR TECH 25A NT200-133		3							C5/19/82
004	W290000809	FAN ETRI 760-98-XH-182-115		1							C5/19/82
005	W44005262	ASSY CABLE PCB FANS BA11		1							C5/19/82
006	W44005320	SUB ASSY BA11 FRONT COVER		1							C5/19/82
007	W26001206	TERM STRIP SPOS KULKA 599-5-UH		1							C5/19/82
008	W49000029	PCGD 1650-F/SAE NYLN CRD GUIDE		54							C5/19/82
009	W29000080	GRMT CATERPILLER HHS 2692		1							C5/19/82
010	W49000334	SLIDE BA11 CHAS TRAK C2300124		1							C5/19/82
011	W44005072-01-X	COVER TOP WPBA11 EXP CHASSIS		1							C5/19/82
012	W44005072-02-X	COVER BOTTOM WPBA11 EXP CHAS		1							C5/19/82
013	W44005080-X	COVER PWR SUP WPBA11 EXP CHAS		1							C5/19/82
014	W47000209	SCR 8-32X3/8 SELF TAPPING		12							C5/19/82
015	W47000542	SCR 8-32X3/8 PHPH MS51957-43		8							C5/19/82
016	W290000858	FAN TORIN TA450 A30108-10 115V		3							C5/19/82
017	W48000731	WASHER 8 INT TOOTH MS35333-72		20							C5/19/82
018		NO INVENTORY ITEM									C5/19/82
019	W26001081	TB JUMPER STRAP CINCH 141-J		3							C5/19/82
020	W47001417	SCR 6-32X1/4 FHPH MS24693-C24		20							C5/19/82
021		NO INVENTORY ITEM									C5/19/82
022	W44005221	ASSY-CABLE WPBA11 PWR SUP		3							C5/19/82
023	W44005213-03	ASSY-CABLE DB11-DK/CK PWR BA11		3							C5/19/82
024	W47001458	SCR 6-32X1/2 FHPH MS24693-C28		2							C5/19/82
025	W46000030	NUT 8-32 HEX MS 35649-284		2							C5/19/82
026	W48000723	WASHER 6 INT TH MS35333-71		2							C5/19/82
027	W47001615	SCR 8-32X5/16FHPH MS24693-C47		8							C5/19/82
028	W47001623	SCREW SELF TAPFHPH-8-32X.38		4							C5/19/82
029	W26001214	JUMPER STRIP KULKA 600J		2							C5/19/82
030	W26001222	TABS KLIPITITE KULKA KT547		5							C5/19/82
031	W26001230	TAB KLIPITITE KULKA KT546		5							C5/19/82

SEQ	PART NUMEER	DESCRIPTION	CON	QTY	HRS	SUB	REV	L	LOCATION	EFF DATE
000	LSC	NO INVENTORY ITEM	31		.0					05/19/82
001	W44005064-X	CHASSIS EXPANSION WPBA11	1		.0					05/19/82
002	W44005286-01	ASSY P/S MTG PLATE BA11-NO P/S	1		.0	S				06/09/82
003		NO INVENTORY ITEM			.0					05/19/82
004	W290000783	FAN ETRI 760-98XH-181-11220	1		.0					06/02/82
005	W44005262	ASSY CABLE PCB FANS BA11	1		.0	S				05/19/82
006	W44005320	SUB ASSY BA11 FRONT COVER	1		.0	S				06/24/82
007	W26001206	TERM STRIP SPOS KULKA 599-5-UH	1		.0					05/19/82
008	W49000029	PCGD 1650-F/SAE NYLN CRD GUIDE	54		.0					05/19/82
009	W29000080	GRMT CATERPILLER HHS 2692	1		.0					05/19/82
010	W49000334	SLIDE BA11 CHAS TRAK C230D124	1		.0					05/19/82
011	W44005072-01-X	COVER TOP WPBA11 EXP CHASSIS	1		.0					05/19/82
012	W44005072-02-X	COVER BOTTOM WPBA11 EXP CHAS	1		.0					05/19/82
013	W44005030-X	COVER PWR SUP WPBA11 EXP CHAS	1		.0					05/19/82
014	W470002209	SCR 8-32X3/8 SELF TAPPING	12		.0					05/19/82
015	W47000542	SCR 8-32X3/8 PHPH MS51957-43	4		.0					05/19/82
016	W290000325	FAN ETRI 760-125XR-2181-11220	3		.0					06/02/82
017	W480000731	WASHER 8 INT TOOTH MS35333-72	16		.0					05/19/82
018		NO INVENTORY ITEM			.0					05/19/82
019		NO INVENTORY ITEM			.0					05/19/82
020	W47001417	SCR 6-32X1/4 FHPH MS24693-C24	20		.0					05/19/82
021		NO INVENTORY ITEM			.0					05/19/82
022		NO INVENTORY ITEM			.0					05/19/82
023		NO INVENTORY ITEM			.0					05/19/82
024	W47001458	SCR 6-32X1/2 FHPH MS24693-C28	2		.0					05/19/82
025	W46000030	NUT 8-32 HEX MS 35649-284	2		.0					05/19/82
026	W480000723	WASHER 6 INT TH MS35333-71	2		.0					05/19/82
027		NO INVENTORY ITEM			.0					05/19/82
028	W47001623	SCREW SELF TAPFHPH-8-32X.38	4		.0					05/19/82
029	W26001214	JUMPER STRIP KULKA 600J	2		.0					05/19/82
030	W26001222	TABS KLIPITITE KULKA KT547	5		.0					05/19/82
031	W26001230	TAB KLIPITITE KULKA KT546	5		.0					05/19/82


SEQ	PART NUMBER	DESCRIPTION	CON	QTY	HRS	SUB	REV	L	LOCATION	EFF	DATE
000	LSC	NO INVENTORY ITEM		31							05/19/82
001	W440C5064-X	CHASSIS EXPANSION WPBA11		1							05/19/82
002	W440C5288-01	ASSY P/S MTG PLATE BA11-NO P/S		1							06/09/82
003	W51000065	P/S NAT-PWR TECH 25A NT200-133		1							05/19/82
004	W29000783	FAN ETRI 760-98XH-181-11220		1							06/02/82
005	W44005262	ASSY CABLE PCB FANS BA11		1							05/19/82
006	W440C5320	SUB ASSY BA11 FRONT COVER		1							06/24/82
007	W26001206	TERM STRIP SPOS KULKA 599-5-UH		1							05/19/82
008	W490C0029	PCGD 1650-F/SAE NYLN CRD GUIDE		54							05/19/82
009	W29000080	GRMT CATERPILLER HHS 2692		1							05/19/82
010	W49000334	SLIDE BA11 CHAS TRAK C230D124		1							05/19/82
011	W440C5072-01-X	COVER TOP WPBA11 EXP CHASSIS		1							05/19/82
012	W44005072-02-X	COVER BOTTOM WPBA11 EXP CHAS		1							05/19/82
013	W44005060-X	COVER PWR SUP WPBA11 EXP CHAS		1							05/19/82
014	W470C2209	SCR 5-32X3/8 SELF TAPPING		12							05/19/82
015	W47000542	SCR 8-32X3/8 PHPH MS51957-43		4							05/19/82
016	W29000825	FAN ETRI 760-125XR-2181-11220		3							06/02/82
017	W48000731	WASHER 8 INT TOOTH MS35333-72		16							05/19/82
018		NO INVENTORY ITEM									05/19/82
019	W26001081	T3 JUMPER STRAP CINCH 141-J		1							05/19/82
020	W47001417	SCR 6-32X1/4 FHPH MS24693-C24		20							05/19/82
021		NO INVENTORY ITEM									05/19/82
022	W44005221	ASSY-CABLE WPBA11 PWR SUP		1							05/19/82
023	W44005213-03	ASSY-CABLE DD11-DK/CK PWR BA11		1							05/19/82
024	W47001458	SCR 6-32X1/2 FHPH MS24693-C28		2							05/19/82
025	W460C0030	NUT 8-32 HEX MS 35649-284		2							05/19/82
026	W48000723	WASHER 6 INT TH MS35333-71		2							05/19/82
027	W47001615	SCR 5-32X5/16FHPH MS24693-C47		4							05/19/82
028	W47001623	SCREW SELF TAPFHPH-8-32X.38		4							05/19/82
029	W26001214	JUMPER STRIP KULKA 600J		2							05/19/82
030	W26001222	TABS KLIPITITE KULKA KT547		5							05/19/82
031	W26001230	TAB KLIPITITE KULKA KT546		5							05/19/82

SEQ	PART NUMBER	DESCRIPTION	CON	QTY	HRS	SUB	REV	L	LOCATION	EFF DATE
000	LSC	NO INVENTORY ITEM	31		.0					05/19/82
001	W44005064-X	CHASSIS EXPANSION WPBA11	1		.0					05/19/82
002	W44005286-01	ASSY P/S MTG PLATE BA11-NO P/S	1		.0	S				06/09/82
003	W51000065	P/S NAT-PWR TECH 25A NT200-133	2		.0					05/19/82
004	W29000793	FAN ETRI 760-99XH-181-11220	1		.0					06/02/82
005	W44005262	ASSY CABLE PCB FANS BA11	1		.0	S				05/19/82
006	W44005320	SUB ASSY BA11 FRONT COVER	1		.0	S				06/24/82
007	W26001206	TERM STRIP SPOS KULKA 599-5-UH	1		.0					05/19/82
008	W49000029	PCGD 1650-F/SAE NYLN CRD GUIDE	54		.0					05/19/82
009	W29000080	GRMT CATERPILLER HHS 2692	1		.0					05/19/82
010	W49000334	SLIDE BA11 CHAS TRAK C2300124	1		.0					05/19/82
011	W44005072-01-X	COVER TOP WPBA11 EXP CHASSIS	1		.0					05/19/82
012	W44005072-02-X	COVER BOTTOM WPBA11 EXP CHAS	1		.0					05/19/82
013	W44005080-X	COVER PWR SUP WPBA11 EXP CHAS	1		.0					05/19/82
014	W47002209	SCR 8-32X3/8 SELF TAPPING	12		.0					05/19/82
015	W47000542	SCR 8-32X3/8 PHPH MS51957-43	4		.0					05/19/82
016	W29000825	FAN ETRI 760-125XR-2181-11220	3		.0					06/02/82
017	W48000731	WASHER 8 INT TOOTH MS35333-72	16		.0					05/19/82
018		NO INVENTORY ITEM			.0					05/19/82
019	W26001081	T3 JUMPER STRAP CINCH 141-J	2		.0					05/19/82
020	W47001417	SCR 6-32X1/4 FHPH MS24693-C24	20		.0					05/19/82
021		NO INVENTORY ITEM			.0					05/19/82
022	W44005221	ASSY-CABLE WPBA11 PWR SUP	2		.0	S				05/19/82
023	W44005213-03	ASSY-CABLE DD11-OK/CK PWR BA11	2		.0	S				05/19/82
024	W47001458	SCR 6-32X1/2 FHPH MS24693-C28	2		.0					05/19/82
025	W48000030	NUT 8-32 HEX MS 35649-284	2		.0					05/19/82
026	W48000723	WASHER 6 INT TH MS35333-71	2		.0					05/19/82
027	W47001615	SCR 8-32X5/16FHPH MS24693-C47	8		.0					05/19/82
028	W47001623	SCREW SELF TAPFHPH-8-32X.38	4		.0					05/19/82
029	W26001214	JUMPER STRIP KULKA 600J	2		.0					05/19/82
030	W26001222	TABS KLIPITITE KULKA KT547	5		.0					05/19/82
031	W26001230	TAB KLIPITITE KULKA KT546	5		.0					05/19/82

06/29/82		BILL OF MATERIAL		TOP LEVEL ASSEMBLY LIST		PAGE 1		DESC: ASSY WPBA11 EXP CHAS 3 PS 230V			
ASSEMBLY NO. W440C5346-08		REVISION X1		REV		CON QTY		HRS SUB REV L LOCATION		EFF DATE	
SEQ	PART NUMBER	DESCRIPTION		NO INVENTORY ITEM	CON QTY	HRS	SUB	REV	L	LOCATION	EFF DATE
000	LSC	NO INVENTORY ITEM			31	.0					05/19/82
001	W440C5064-X	CHASSIS EXPANSION WPBA11			1	.0					05/19/82
002	W440C5286-01	ASSY P/S MTG PLATE BA11-NO P/S			1	.0	S				06/09/82
003	W510CC065	P/S NAT-PWR TECH 25A NT200-133			3	.0					05/19/82
004	W290CC0783	FAN ETRI 760-98XH-181-11220			1	.0					06/02/82
005	W440C5262	ASSY CABLE PCE FANS BA11			1	.0	S				05/19/82
006	W440C532C	SUB ASSY BA11 FRONT COVER			1	.0	S				06/24/82
007	W260C1206	TERM STRIP 5POS KULKA 599-5-UH			1	.0					05/19/82
008	W49000029	PCGD 1650-F/SAE NYLN CRD GUIDE			54	.0					05/19/82
009	W290CC080	GRMT CATERPILLER HHS 2692			1	.0					05/19/82
010	W49000334	SLIDE BA11 CHAS TRAK C230D124			1	.0					05/19/82
011	W440C5072-01-X	COVER TOP WPBA11 EXP CHASSIS			1	.0					05/19/82
012	W440C5072-02-X	COVER BOTTOM WPBA11 EXP CHAS			1	.0					05/19/82
013	W440C5080-X	COVER PWR SUP WPBA11 EXP CHAS			1	.0					05/19/82
014	W47002209	SCR 8-32X3/8 SELF TAPPING			12	.0					05/19/82
015	W470C0342	SCR 8-32X3/8 PHPH MS51957-43			8	.0					05/19/82
016	W29000325	FAN ETRI 76C-125XR-2181-11220			3	.0					06/02/82
017	W48000731	WASHER 8 INT TOOTH MS35333-72			20	.0					05/19/82
018		NO INVENTORY ITEM				.0					05/19/82
019	W260G1081	TB JUMPER STRAP CINCH 141-J			3	.0					05/19/82
020	W47001417	SCR 6-32X1/4 FHPH MS24693-C24			20	.0					05/19/82
021		NO INVENTORY ITEM				.0					05/19/82
022	W440C5221	ASSY-CABLE WPBA11 PWR SUP			3	.0	S				05/19/82
023	W440C5213-03	ASSY-CABLE DD11-DK/CK PWR BA11			3	.0	S				05/19/82
024	W470C1458	SCR 6-32X1/2 FHPH MS24693-C28			2	.0					05/19/82
025	W46000030	NUT 8-32 HEX MS 35649-284			2	.0					05/19/82
026	W48000723	WASHER 6 INT TH MS35333-71			2	.0					05/19/82
027	W47001615	SCR 8-32X5/16FHPH MS24693-C47			8	.0					05/19/82
028	W47001623	SCREW SELF TAPFHPH-8-32X.38			4	.0					05/19/82
029	W26001214	JUMPER STRIP KULKA 600J			2	.0					05/19/82
030	W26001222	TABS KLIPITITE KULKA KT547			5	.0					05/19/82
031	W26001230	TABS KLIPITITE KULKA KT546			5	.0					05/19/82

REVISIONS		
LTR	DESCRIPTION	DATE
A	PROD. REL	4-19-82

APR 19 1982

 WESPERLINE™ <small>Division of WILSON-JONES COMPANY, ANAHEIM, CALIFORNIA</small>	
WIRE LIST-BACKPLANE DD11-CK EQUIV.	
TOLERANCES UNLESS OTHERWISE SPECIFIED FRACTIONS DEC. ANGLES	SCALE 2
APPROVALS SC 4-15-82 RM 4-19-82	DATE 4-15-82 4-19-82
DO NOT SCALE DRAWING	
SHEET 0 OF 21	

DD11-CK BACKPLANE
W44004612

SIGNAL NAME	PIN NAME
+15/+8V	C01U1 C02U1 C03U1 C04U1
+20V	A02U1 A02V1 A02V2 A03U1 A03V1 A03V2
+5V (1)	A01A2 A02A2 A03A2 A04A2
+5V (2)	B01A2 B02A2 B03A2 B04A2 B02D1
+5V (3)	C01A2 C02A2 C03A2 C04A2
+5V (4)	D01A2 D02A2 D03A2 D04A2
+5V (5)	E01A2 E02A2 E03A2 E04A2
+5V (6)	F01A2 F02A2 F03A2 F04A2
+5V (A)	A01A2 B01A2 C01A2 D01A2 E01A2 F01A2

SIGNAL NAME

+5V (B)

+5V (C)

+5V (D)

-15V

-5V

A BG IN

A BG OUT

A BR OUT

-2-

PIN NAMEA02A2
B02A2
C02A2
D02A2
E02A2
F02A2A03A2
B03A2
C03A2
D03A2
E03A2
F03A2A04A2
B04A2
C04A2
D04A2
E04A2
F04A2C01B2
C02B2
C03B2
C04B2
D04B2
D03B2
D02B2
D01B2
E01B2
E02B2
E03B2
E04B2
F04B2
F03B2
F02B2
F01B2B02V2
B03V2D01U2
F01B1D01V2
F01A1D01J2
F01F1
F01U2SIGNAL NAME

A IN

A INT A

A INT B

A INT ENB A

A INT ENB B

A OUT HIGH

A OUT LOW

A SEL 0

A SEL 4

A SEL 6

A SER 2

A SSYN IN H

AC LO L

B BG IN

B BG OUT

-3-

PIN NAMED01H1
E01M1D01N1
F01U1C01J1
F01K2D01M1
F01V1C01L1
F01H2D01K1
E01M2D01D1
E01N1D01F1
E01S2D01E1
E01R2D01C1
E01S1D01J1
E01T2D01V1
E01B1B01F1
B02F1C01V1
C02V1C03V1
C04V1B03F1
B04F1D02U2
F02B1D02V2
F02A1

<u>SIGNAL NAME</u>	<u>PIN NAME</u>	<u>SIGNAL NAME</u>	<u>PIN NAME</u>
B BR OUT	D02J2 F02P1 F02U2	BBSY L	A01P2 A02P2 F01D1 F02D1 F03D1 F04D1 A03P2 A04P2
B IN	D02H1 E02M1		B01E2 D01S2
B INT A	D02N1 F02U1	BG4 A	D01T2 D02S2
B INT B	C02J1 F02K2	BG4 B	D02T2 D03S2
B INT ENB A	D02M1 F02V1	BG4 C	D03T2 D04S2
B INT ENB B	C02L1 F02H2	BG4 D	B04E2 D04T2
B OUT HIGH	D02K1 E02N2	BG4 E	B01B1 D01P2
B OUT LOW	D02D1 E02N1	BG5 A	D01R2 D02P2
B SEL 0	D02F1 E02S2	BG5 B	D03R2 D03P2
B SEL 4	D02E1 E02R2	BG5 C	D03R2 D04P2
B SEL 6	D02C1 E02S1	BG5 D	B04B1 D04R2
B SER 2	D02U1 E02T2	BG5 E	B01A1 D01M2
B SSYN IN H	D02V1 E02B1	BG6 A	D01N2 D02M2
BB+15	A02R1 A03R1 C03U1	BG6 B	D02N2 D03M2
BB+5	B02D1 B03D1	BG6 C	D03N2 D04M2
BB-15	A02S1 A03S1 C03B2	BG6 D	

SIGNAL NAME

PIN NAME

BG6 E

B04A1
D04N2

BG7 A

A01V1
D01K2

BG7 B

D01L2
D02K2

BG7 C

D02L2
D03K2

BG7 D

D03L2
D04K2

BG7 E

A04V1
D04L2

BR4 L

B01D2
B02D2
D01H2
D02H2
D03H2
D04H2
B03D2
B04D2

BR5 L

B01C1
B02C1
D01F2
D02F2
D03F2
D04F2
B03C1
B04C1

BR6 L

A01U2
A02U2
D01E2
D02E2
D03E2
D04E2
A03U2
A04U2

BR7 L

A01T2
A02T2
D01D2
D02D2
D03D2
D04D2
A03T2
A04T2

SIGNAL NAME

PIN NAME

BUS A00 L

B01H2
B02H2
E01H2
E02H2
E03H2
E04H2
B03H2
B04H2

BUS A01 L

B01H1
B02H1
E01H1
E02H1
E03H1
E04H1
B03H1
B04H1

BUS A02 L

B01J2
B02J2
E01F1
E02F1
E03F1
E04F1
B03J2
B04J2

BUS A03 L

B01J1
B02J1
E01V2
E02V2
E03V2
E04V2
B03J1
B04J1

BUS A04 L

B01K2
B02K2
E01U2
E02U2
E03U2
E04U2
B03K2
B04K2

BUS A05 L

B01K1
B02K1
E01V1
E02V1
E03V1
E04V1
B03K1
B04K1

<u>SIGNAL NAME</u>	<u>PIN NAME</u>	<u>SIGNAL NAME</u>	<u>PIN NAME</u>
BUS A06 L	B01L2 B02L2 E01U1 E02U1 E03U1 E04U1 B03L2 B04L2	BUS A12 L	B01P2 B02P2 E01C1 E02C1 E03C1 E04C1 B03P2 B04P2
BUS A07 L	B01L1 B02L1 E01P2 E02P2 E03P2 E04P2 B03L1 B04L1	BUS A13 L	B01P1 B02P1 E01K2 E02K2 E03K2 E04K2 B03P1 B04P1
BUS A08 L	B01M2 B02M2 E01N2 E02N2 E03N2 E04N2 B03M2 B04M2	BUS A14 L	B01R2 B02R2 E01K1 E02K1 E03K1 E04K1 B03R2 B04R2
BUS A09 L	B01M1 B02M1 E01R1 E02R1 E03R1 E04R1 B03M1 B04M1	BUS A15 L	B01R1 B02R1 E01D2 E02D2 E03D2 E04D2 B03R1 B04R1
BUS A10 L	B01N2 B02N2 E01P1 E02P1 E03P1 E04P1 B03N2 B04N2	BUS A16 L	B01S2 B02S2 E01E2 E02E2 E03E2 E04E2 B03S2 B04S2
BUS A11 L	B01N1 B02N1 E01L1 E02L1 E03L1 E04L1 B03N1 B04N1	BUS A17 L	B01S1 B02S1 E01D1 E02D1 E03D1 E04D1 B03S1 B04S1

<u>SIGNAL NAME</u>	<u>PIN NAME</u>
BUS D00 L	A01C1 A03C1 C01S2 C02S2 C03S2 C04S2 A03C1 A04C1 A01D2 A02D2 C01R2 C02R2 C03R2 C04R2 A03D2 A04D2 F01E2 F02E2 F03E2 F04E2 A01D1 A02D1 C01U2 C02U2 C03U2 C04U2 A03D1 A04D1 C02U2 F02E2 F01L1 F02L1 F03L1 F04L1 A01E2 A02E2 C01T2 C02T2 C03T2 C04T2 A03E2 A04E2 C02T2 F02L1
BUS D01 L	
BUS D02 L	
BUS D03 L	
BUS D04 L JMP	F01N2 F02N2 F03N2 F04N2 A01E1 A02E1 C01N2 C02N2 C03N2 C04N2 A03E1 A04E1 C02N2 F02N2 F01F1 F02F1 F03F1 F04F1 A01F2 A02F2 C01P2 C02P2 C03P2 C04P2 A03F2 A04F2 C02P2 F02F1 F01F2 F02F2 F03F2 F04F2 A01F1 A02F1 C01V2 C02V2 C03V2 C04V2 A03F1 A04F1 C02V2 F02F2
BUS D05 L JMP	
BUS D06 L	
BUS D06 L JMP	

SIGNAL NAME	PIN NAME
BUS D07 L	F01H1
	F02H1
	F03H1
	F04H1
BUS D07 L JMP	A01H2
	A02H2
	C01M2
	C02M2
BUS D08 L	C03M2
	C04M2
	A03H2
	A04H2
BUS D08 L JMP	C02M2
	F02H1
	F01K1
	F02K1
BUS D09 L	F03K1
	F04K1
	A01H1
	A02H1
BUS D09 L JMP	C01L2
	C02L2
	C03L2
	C04L2
BUS D10 L	A03H1
	A04H1
	C02L2
	F02K1
BUS D10 L JMP	A01J2
	A02J2
	C01K2
	C02K2
BUS D11 L	C03K2
	C04K2
	A03J2
	A04J2
BUS D11 L JMP	A01J1
	A02J1
	C01J2
	C02J2
BUS D12 L	C03J2
	C04J2
	A03J1
	A04J1
BUS D13 L	A01L2
	A02L2
	C01F2
	C02F2
BUS D13 L JMP	C03F2
	C04F2
	A03L2
	A04L2
BUS D14 L	A01L1
	A02L1
	C01E2
	C02E2
BUS D14 L JMP	C03E2
	C04E2
	A03L1
	A04L1
BUS D15 L	A01M2
	A02M2
	C01D2
	C02D2
C BG IN	C03D2
	C04D2
	A03M2
	A04M2
C BG OUT	D03U2
	F03B1
	D03V2
	F03A1

<u>SIGNAL NAME</u>	<u>PIN NAME</u>
C BR OUT	D03J2 F03P1 F03U2
C IN	D03H1 E03M1
C INT A	D03N1 F03U1
C INT B	C03J1 F03K2
C INT ENB A	D03M1 F03V1
C INT ENB B	C03L1 F03H2
C OUT HIGH	D03K1 E03M2
C OUT LOW	D03D1 E03N1
C SEL 0	D03F1 E03S2
C SEL 4	D03E1 E03R2
C SEL 6	D03C1 E03S1
C SER 2	D03J1 E03T2
C SSYN IN H	D03V1 E03B1
C0 L	B01U2 B02U2 E01J2 E02J2 E03J2 E04J2 B03U2 B04U2

<u>SIGNAL NAME</u>	<u>PIN NAME</u>
C1 L	B01T2 B02T2 E01F2 E02F2 E03F2 E04F2 B03T2 B04T2
D BG IN	D04U2 F04B1
D BG OUT	D04V2 F04A1
D BR OUT	D04J2 F04P1 F04U2
D IN	D04H1 E04M1
D INT A	D04N1 F04U1
D INT B	C04J1 F04K2
D INT ENB A	D04M1 F04V1
D INT ENB B	C04L1 F04H2
D OUT HIGH	D04K1 E04M2
D OUT LOW	D04D1 E04N1
D SEL 0	D04F1 E04S2
D SEL 4	D04E1 E04H2
D SEL 6	D04C1 E04B1
D SER 2	D04J1 E04T2

SIGNAL NAME

GND (04)

GND (05)

GND (06)

GND (07)

GND (08)

GND (09)

GND (10)

PIN NAME

D01C2
D02C2
D03C2
D04C2
D04T1
D03T1
D02T1
D01T1

E01C2
E02C2
E03C2
E04C2
E04T1
E03T1
E02T1
E01T1

F01C2
F02C2
F03C2
F04C2
F04T1
F03T1
F02T1
F01T1

E01A1
E02A1
E03A1
E04A1

A01B2
A01V2
B01B2
B01V2

A04B2
A04V2
B04B2
B04V2

A01S1
A01R1
A01P1
A01N1
A04N1
A04P1
A04R1
A04S1

SIGNAL NAME

GND (11)

GND (12)

HALT GRANT

HALT REQ

INIT L

INT SSYN

INTR L

LTC

PIN NAME

B01E1
B01D1
B04E1
B04D1

F01J2
F02J2
F03J2
F04J2

C01R1
C02R1
C03R1
C04R1

C01P1
C02P1
C03P1
C04P1

A01A1
A02A1
D01L1
D02L1
D03L1
D04L1

A03A1
A04A1

B02E1
B03E1

A01B1
A02B1
F01M1
F02M1
F03M1
F04M1

A03B1
A04B1

C01D1
C02D1
C03D1
C04D1

SIGNAL NAME

MSYN L

PIN NAME

B01V1
B02V1
E01E1
E02E1
E03E1
E04E1
B03V1
B04V1

NPG L

A01U1
C01A1
C01B1
C02A1
C02B1
C03A1
C03B1
C04A1
C04B1
A04U1

NPR L

A01S2
A02S2
F01J1
F02J1
F03J1
F04J1
A03S2
A04S2

PA L

A01M1
A02M1
C01C1
C02C1
C03C1
C04C1
A03M1
A04M1

PAR DET

B02E2
B03E2

PAR P0

A02P1
A03P1

PAR P1

A02N1
A03N1

SIGNAL NAME

PB L

PIN NAME

A01N2
A02N2
C01S1
C02S1
C03S1
C04S1
A03N2
A04N2

RESERVE BUS

B02A1
B03A1

SACK L

A01R2
A02R2
F01T2
F02T2
F03T2
F04T2
A03R2
A04R2

SSYN L

F01C1
F02C1
F03C1
F04C1

SSYN L

B01U1
B02U1
E01J1
E02J1
E03J1
E04J1
B03U1
B04U1

SSYN L JMP

E02J1
F02C1

